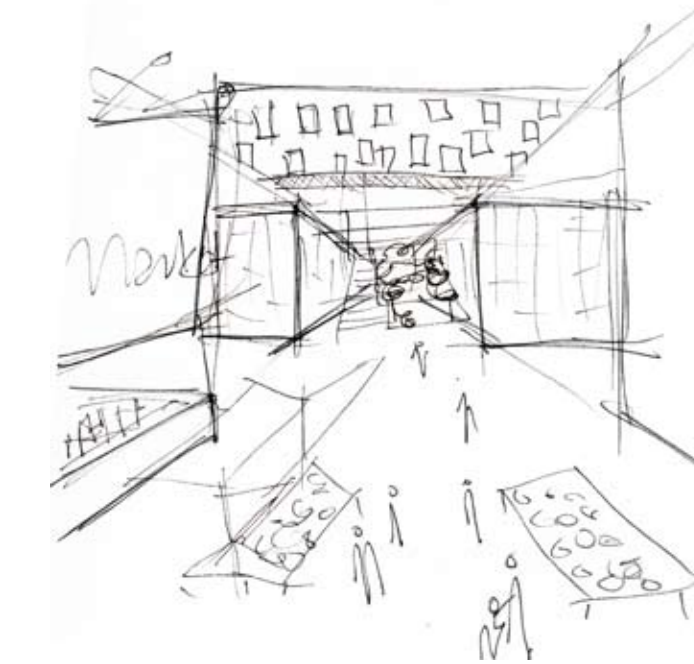


river city market

RE-ENVISIONED



Inspired by my visit to the Santa Caterina Market by Enric Miralles in Barcelona, Spain, this component of the project is a haven for both the voy-
eur and the culinary connoisseur alike. The surrounding
program of Steamboat of Arabia Museum and contextual
residential services enclose the space in an effort to pro-
vide an experience on the urban scale.

The intent is to provide
a place where one could not only go
to buy their food, but also discover
various ideas for recipes. Both by
signage and a LED marquee display
that serves as a digital billboard to
advertise the daily specials and local
events.

While visiting the market,
people can sit down to eat at
the deli and watch the parade of
customers stream through the
open air vendor stalls. East of the
market, a bioswale steps down to
collect and filter runoff rainwater,
allowing for reusable grey water.



why the river city market?



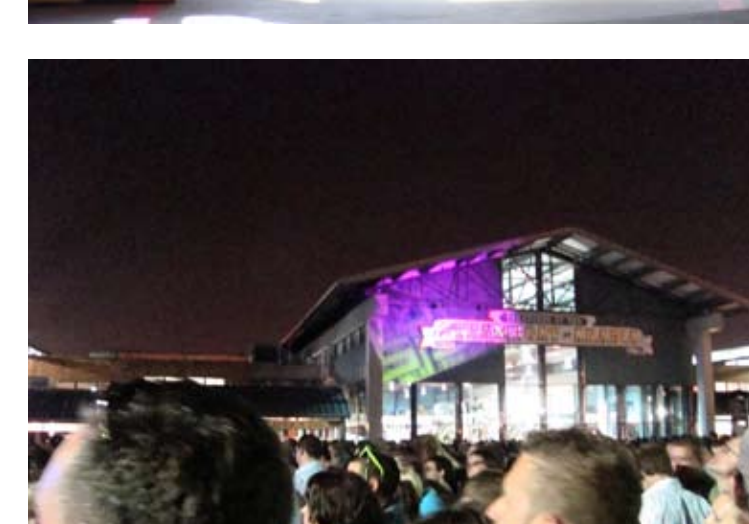
It is distinctly Kansas City
Kansas City began as a trading post for early 18th cen-
tury settlers traveling along the Missouri River. The Historic
Town of Kansas is located just west of Berkeley Riverfront
Park. With the City Market area situated near the origins
of the city, it serves as a model for expansion towards the
river and onto the site.



It is a stage for the city
Every year, dozens of major concert events take place in
City Market. To experience a concert outdoors with the city
as a backdrop, while delis and restaurants stay open late,
and people can be seen leaning out windows to hear the
music float on the night air, is an experience unlike any
other in Kansas City.



It promotes a healthy lifestyle
Like any farmers market, walking between vendors stalls
is more than just a trip to the grocery store. Fresh produce
fills each Saturday morning with smells and is a necessary
component to a healthy body. It is also a wonderful place
to people watch.



It anchors various program
The Steamboat of Arabia Museum is home to a sidewheel
steamboat that sank in 1865 and has since been found
and restored. Unfortunately, the museum is in decline, due
to lack of space and various other factors. A new location,
capitalizing on the proximity to the river, would breathe
new life into it and other possible exhibits.



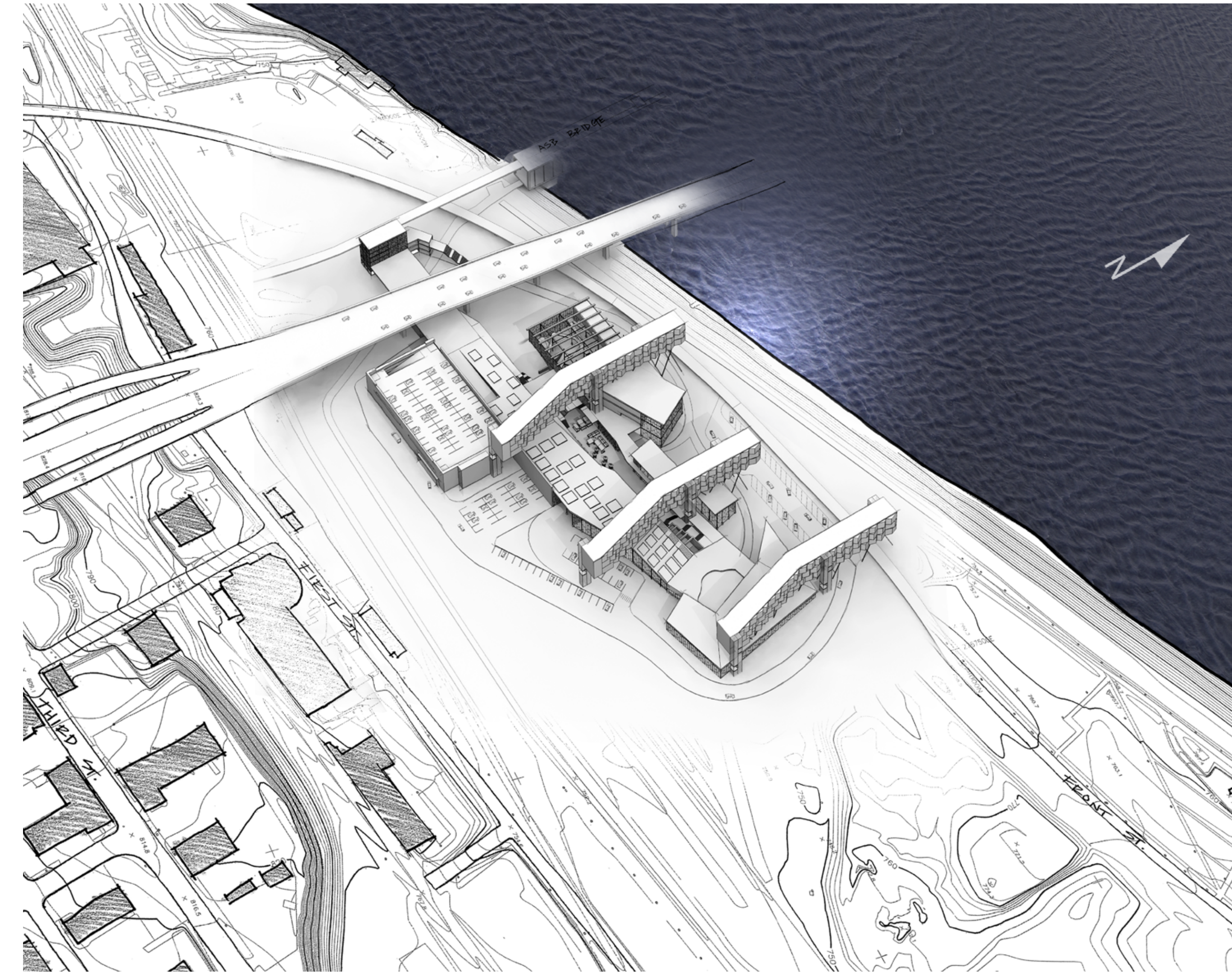
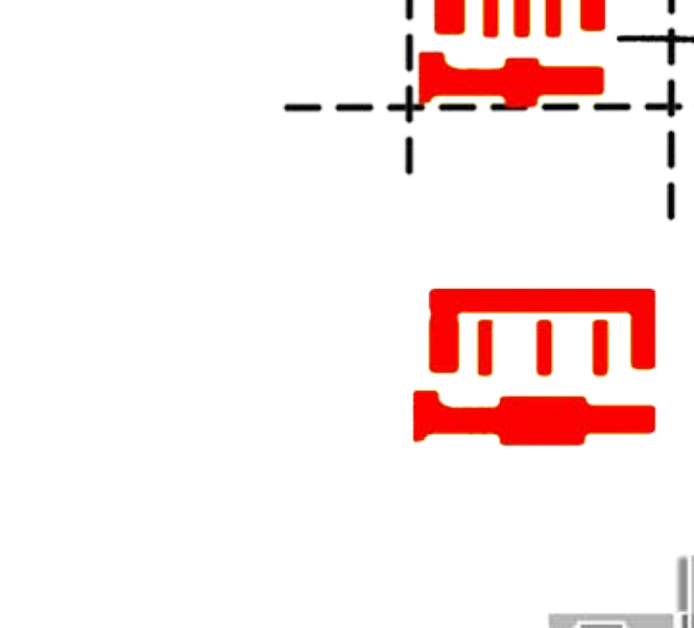
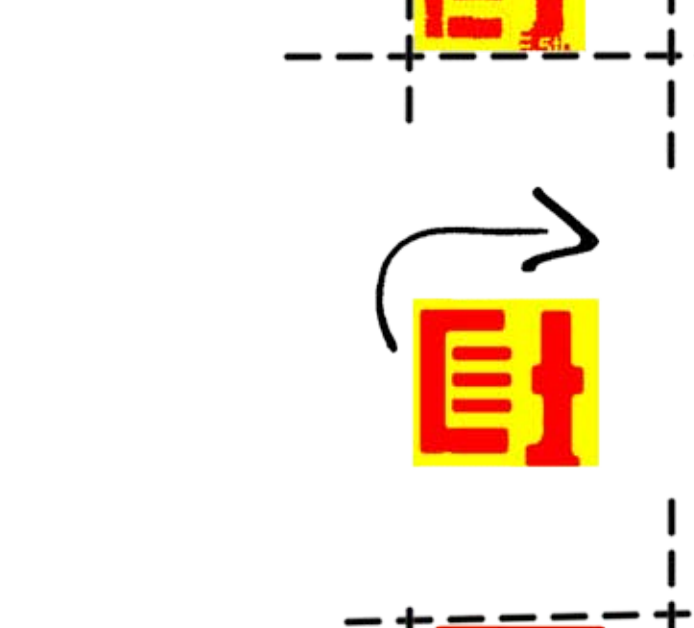
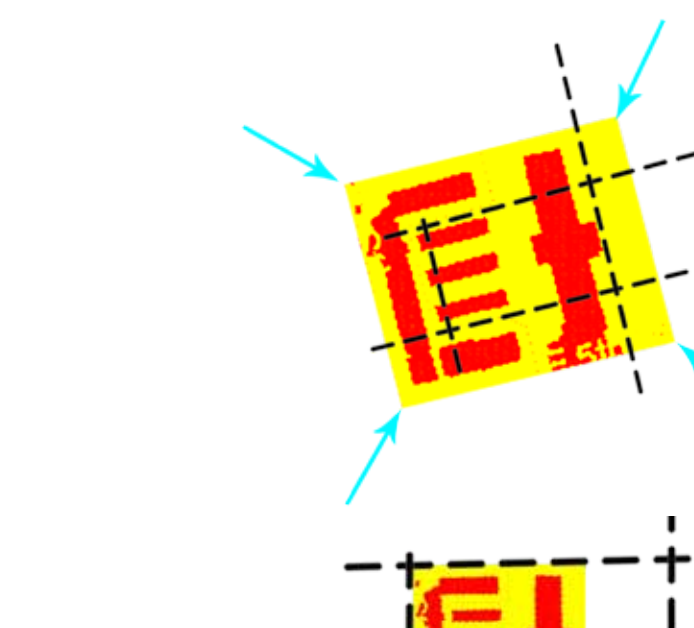
It brings people together
Whether visiting for a concert or a coconut, the City Mar-
ket has served the surrounding area for over 150 years.
Re-envisioning the City Market offers the possibility of in-
troducing an extension in the same spirit, that could better
serve the community and be a model to future growth.

site constraints

POTENTIAL



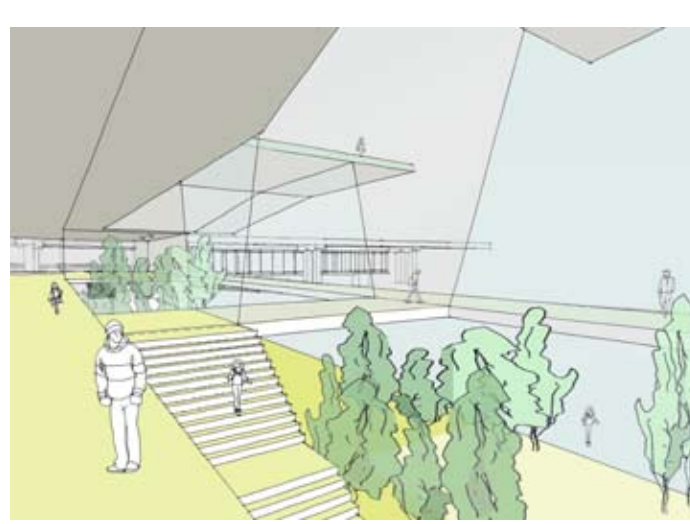
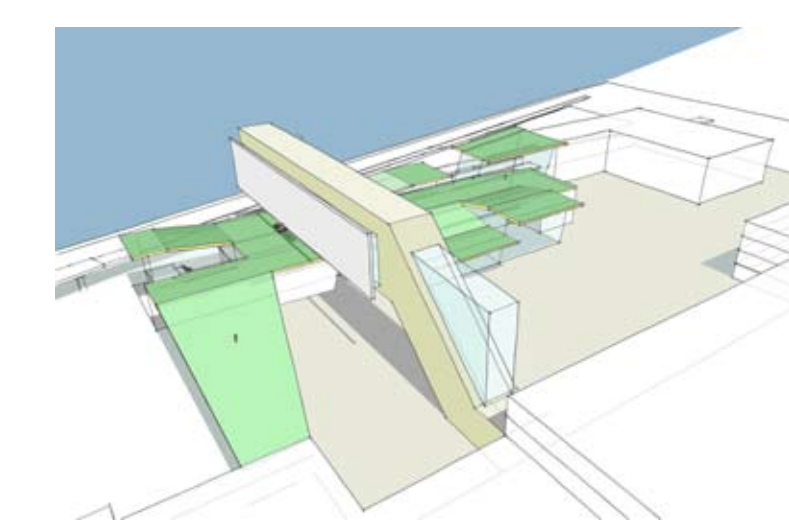
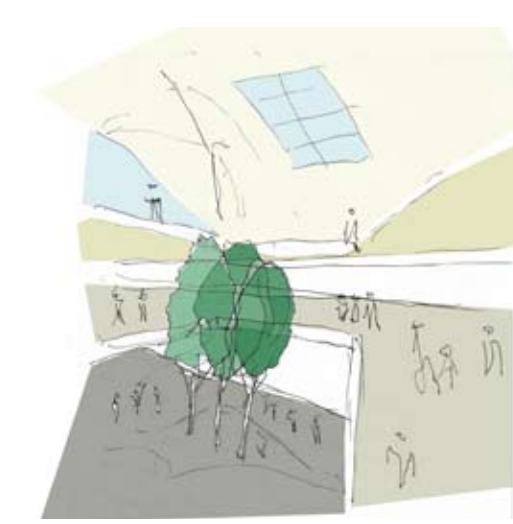
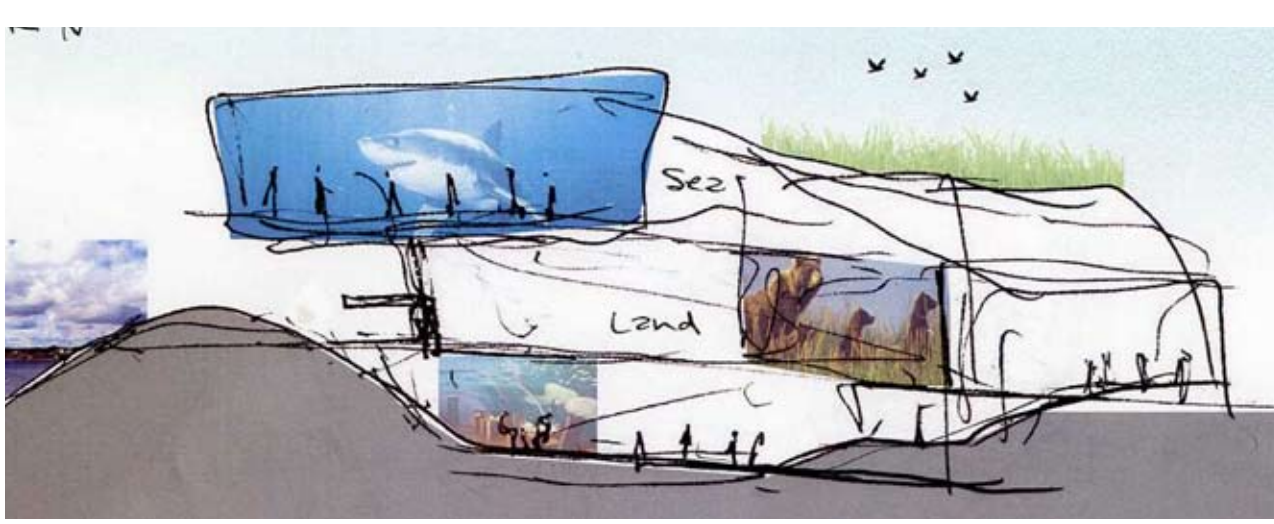
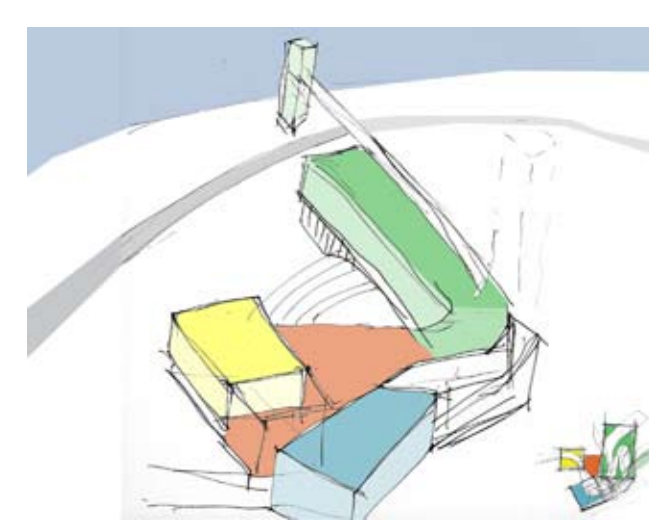
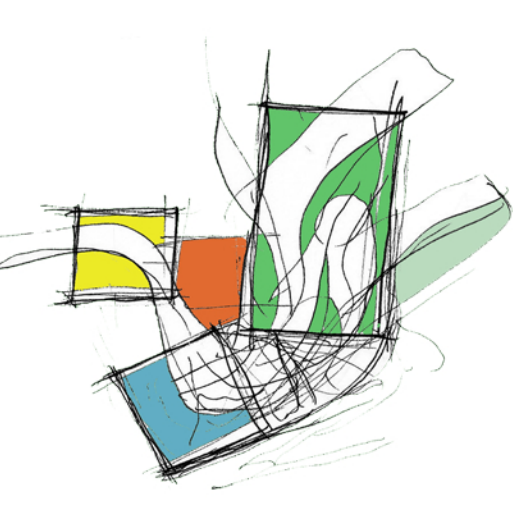
Under the Bridge
One of the major hurdles with this site is how to respond to
the infrastructure. Instead of avoiding it or absorbing it, the
project envisions a space where grey water systems can
respond to create a veritable forest to give new life within
the area. By making a safe environment for residents, the
procession from the light rail depot to the river is celebrat-
ed through illumination. And in the process the framework
is laid for future connections west of the bridge.



The west end of the Berkeley Riverfront Park
provides a challenge in terms of access. The Grand St.
Viaduct runs beneath the Heart of America Bridge, which
crosses the Missouri River into North Kansas City. Running
underneath both are railroad tracks.

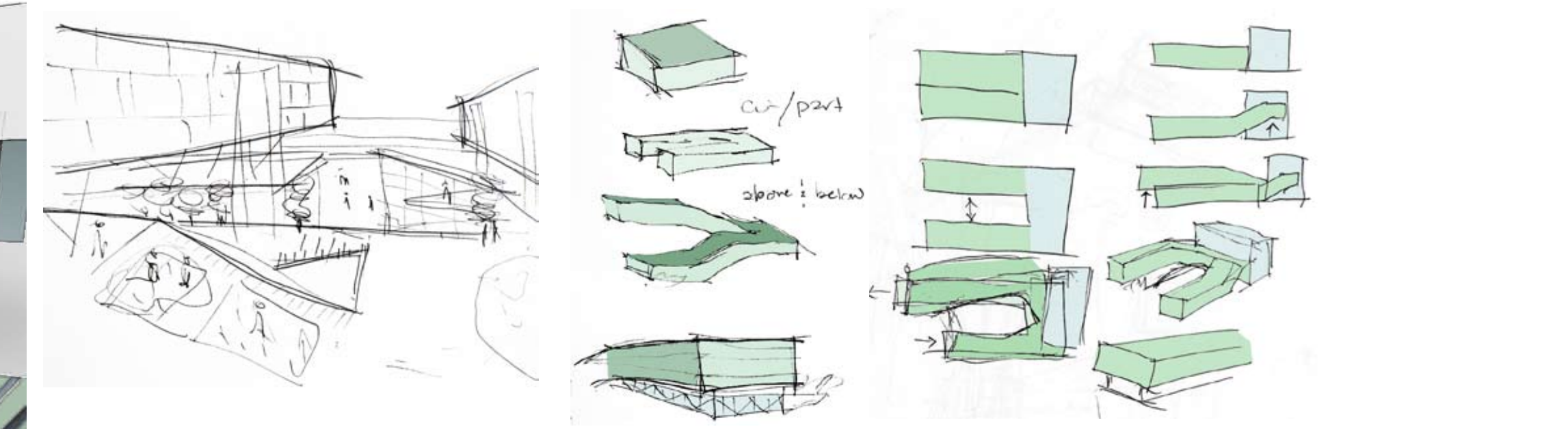
A proposed light rail system
would run along the west end of the
bridge, requiring a train depot to fun-
nel people to and from the project.
On site parking is found at the rear of
the site, spots available near the few
points of entry.

Mixed-use housing
rises above the site and allows
natural light and views towards
the river and the city for each unit.
Underneath, an intensive green
roof would provide leisure and
garden space.



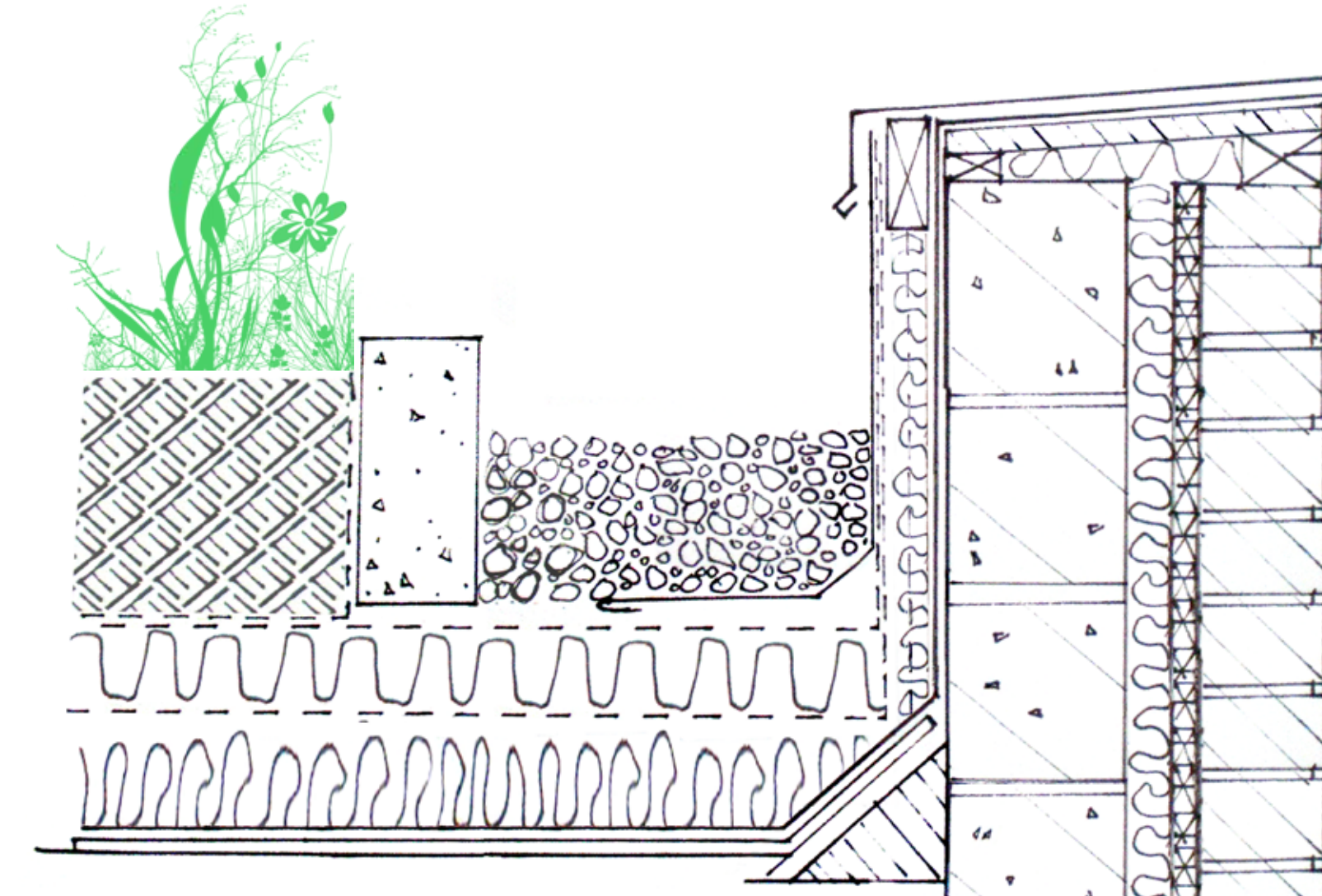
community

HYBRID



Intensive Garden Roof

By utilizing a green roof sys-
tem that is built for heavy duty
use, the project gains a new
dimension. The roof becomes
a playground, a garden, a
soccer field, a place to prac-
tice Tai Chi, and more. It of-
fers something that no other
place in Kansas City has, and
sets the standard for all future
models.



Design

An intensive roof offers much greater design flexibility
and would be highly accessible to the public. Gardens
could be cultivated, leading into a possibility of resi-
dents renting out plots in order to grow their own pro-
duce to sell at the market. Harnessing the grey water
system would also conserve on maintenance costs.

Structural

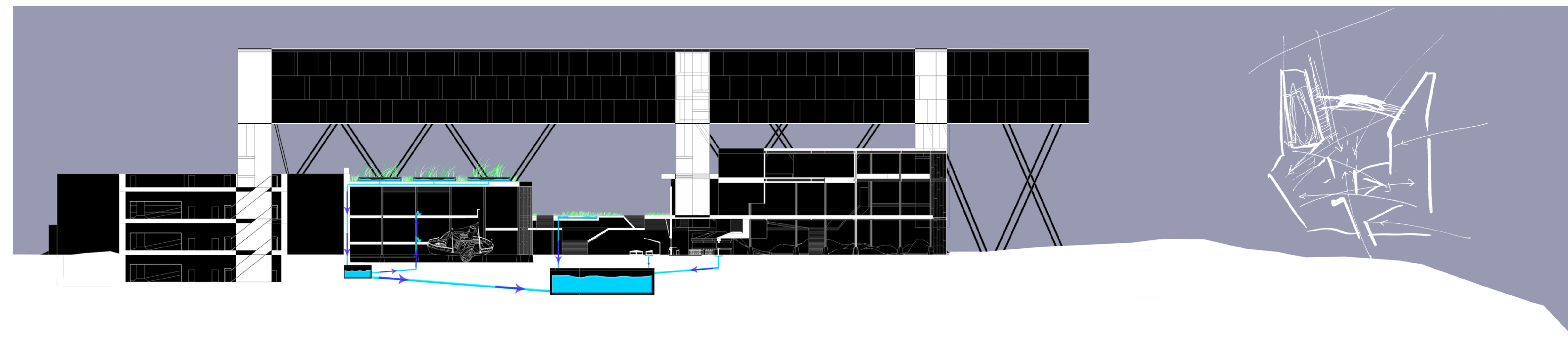
An intensive green roof can have a growing medium
of 6" - 30". The greater weight requires extra structural
support and more maintenance, but long term benefits
include more efficient energy use, a longer lifetime of the
structure, and high insulation values.

Incentives

Tax credits, LEED certification status, FAR Bonus, and
EPA Grants are all possible benefits from including a
green roof system in the project. A greater energy effi-
ciency can also reduce energy costs over the life of the
building.

Garden Roof Detail

The growing medium rests upon a layer designed to
provide water storage and a root barrier to prevent the
roots from tearing into the roof membranes. Insulation
and another root barrier lay beneath, resting on top of
the roofing membrane and structural support.



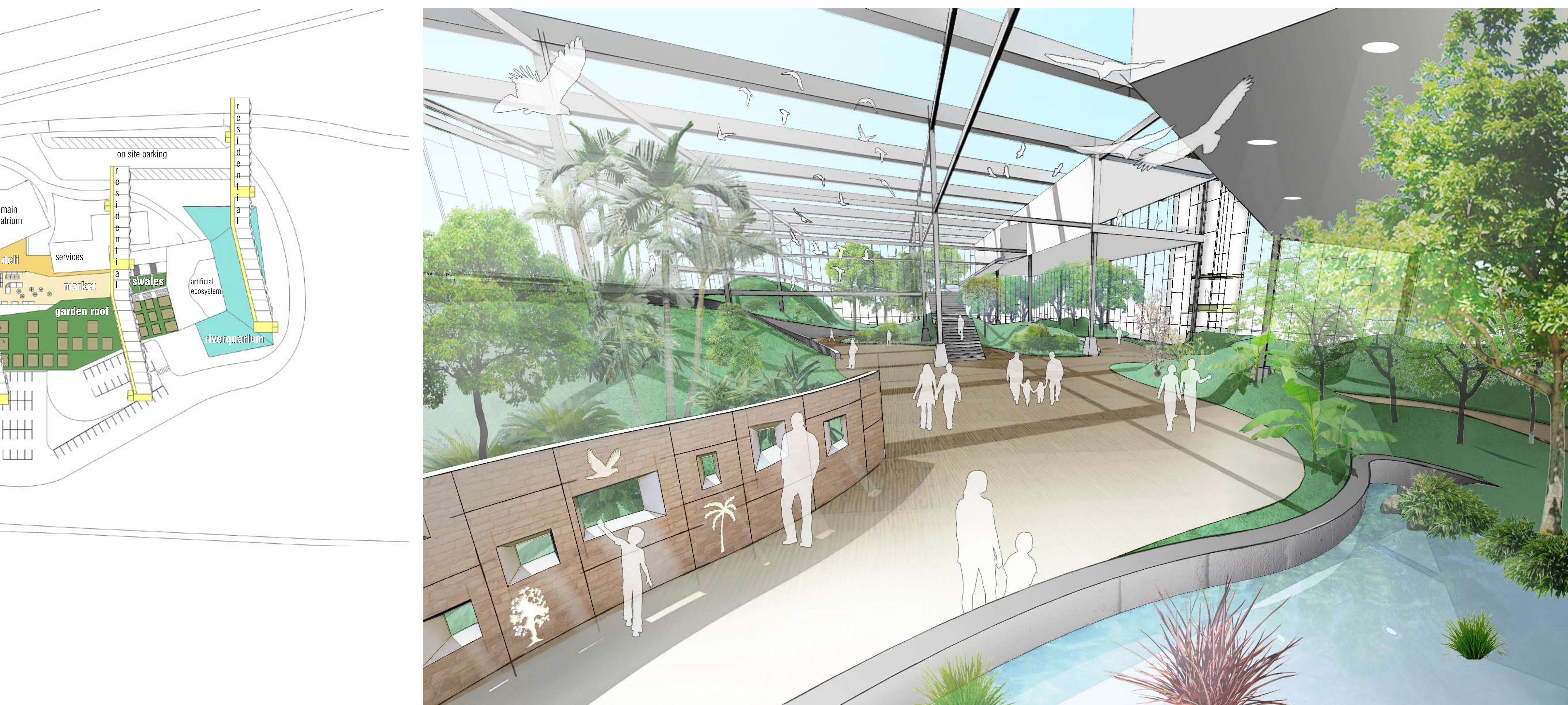
sustainability

EDUCATION



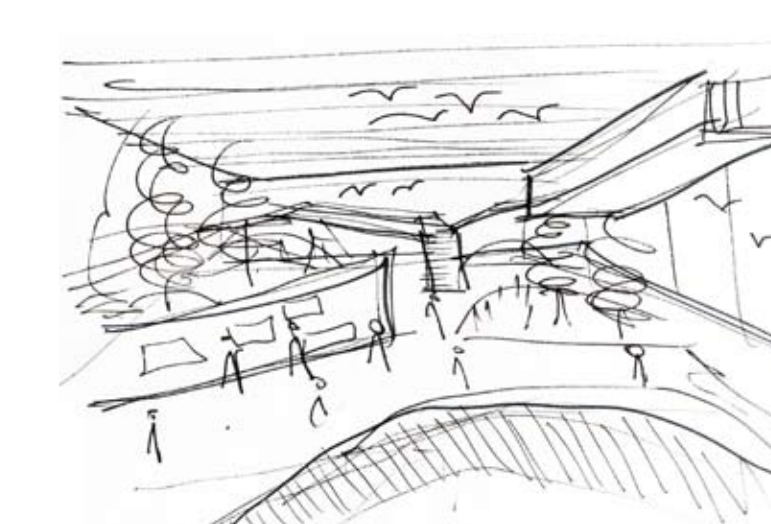
Riverquarium

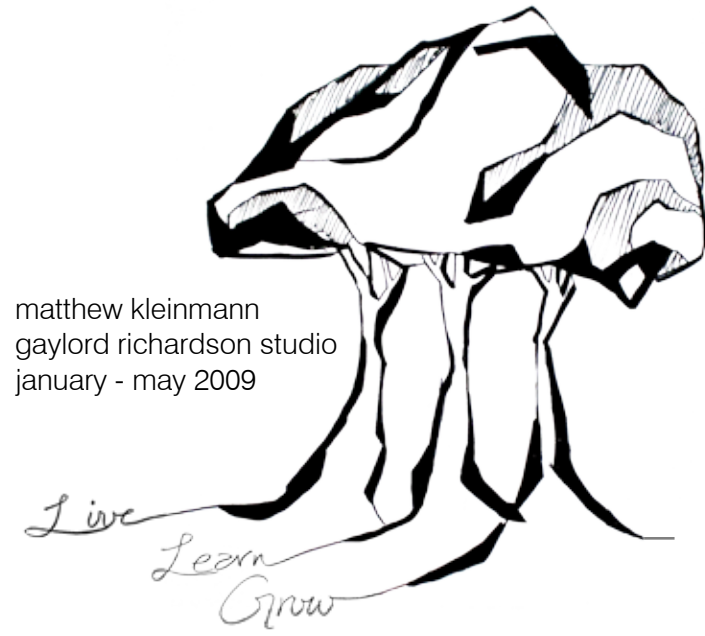
The exhibits here are dedicated to the specific ecosystem
of the Missouri River. Causeway and levee constructions
by the Army Corp of Engineers to reduce seasonal flood-
ing has permanently set the course of the Missouri River.
Because of this, many species are left endangered in what
was once their home, a tributary to the "Muddy Missis-
sippi". The main attraction would be low lying habitat beds
for the Pallid Sturgeon, a large fresh water fish native to the
Missouri River. Its eerily large size evokes images of pre-
historic sharks, and would be a major center of attraction
as well as research within the region.



Biosquare

With the intent to not only use, but also educate the public
about environmentally friendly strategies is the goal of the
Biosquare. Letting large amounts of natural light in, to fa-
cilitate plant growth, the Biosquare serves as a destination
unto itself. It is situated on the west end of the project, so
water used here can be filtered directly into the grey water
system that services the rest of the site.





matthew kleinmann
gaylord richardson studio
january - may 2009

river city market

RE-ENVISIONED



Inspired by my visit to the Santa Caterina Market by Enric Miralles in Barcelona, Spain, this component of the project is a haven for both the voyeur and the culinary connoisseur alike. The surrounding program of Steamboat of Arabia Museum and contextual residential services enclose the space in an effort to provide an experience on the urban scale.

The intent is to provide a place where one could not only go to buy their food, but also discover various ideas for recipes. Both by signage and a LED marquee display that serves as a digital billboard to advertise the daily specials and local events.

While visiting the market, people can sit down to eat at the deli and watch the parade of customers stream through the open air vendor stalls. East of the market, a bioswale steps down to collect and filter runoff rainwater, allowing for reusable grey water.



why the river city market?



It is distinctly Kansas City

Kansas City began as a trading post for early 18th century settlers traveling along the Missouri River. The Historic Town of Kansas is located just west of Berkley Riverfront Park. With the City Market area situated near the origins of the city, it serves as a model for expansion towards the river and onto the site.



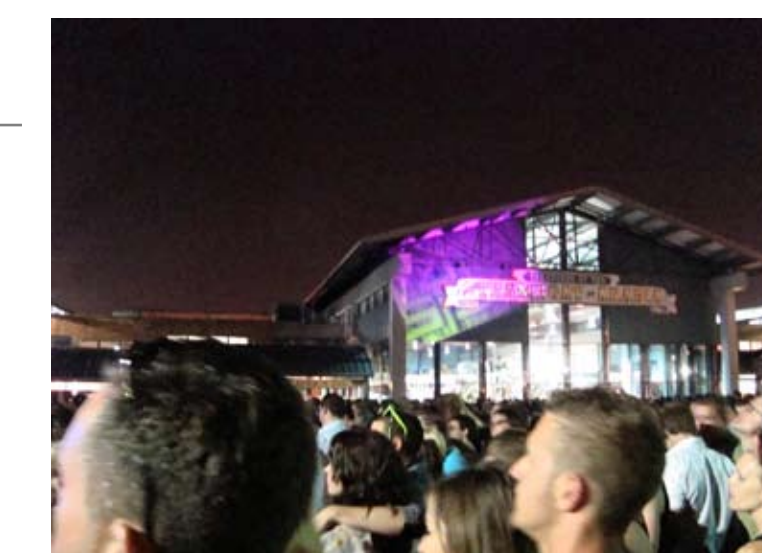
It is a stage for the city

Every year, dozens of major concert events take place in City Market. To experience a concert outdoors with the city as a backdrop, while delis and restaurants stay open late, and people can be seen leaning out windows to hear the music float on the night air, is an experience unlike any other in Kansas City.



It promotes a healthy lifestyle

Like any farmers market, walking between vendors stalls is more than just a trip to the grocery store. Fresh produce fills each Saturday morning with smells and is a necessary component to a healthy body. It is also a wonderful place to people watch.



It anchors various program

The Steamboat of Arabia Museum is home to a sidewheel steamboat that sank in 1865 and has since been found and restored. Unfortunately, the museum is in decline, due to lack of space and various other factors. A new location, capitalizing on the proximity to the river, would breathe new life into it and other possible exhibits.

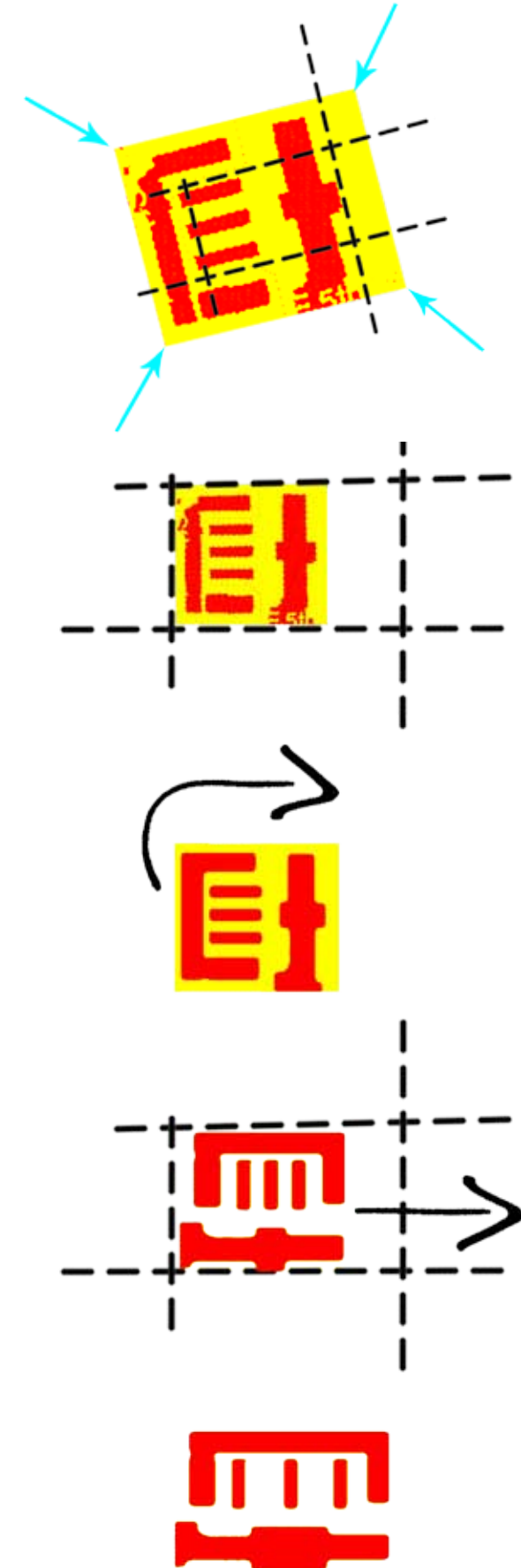
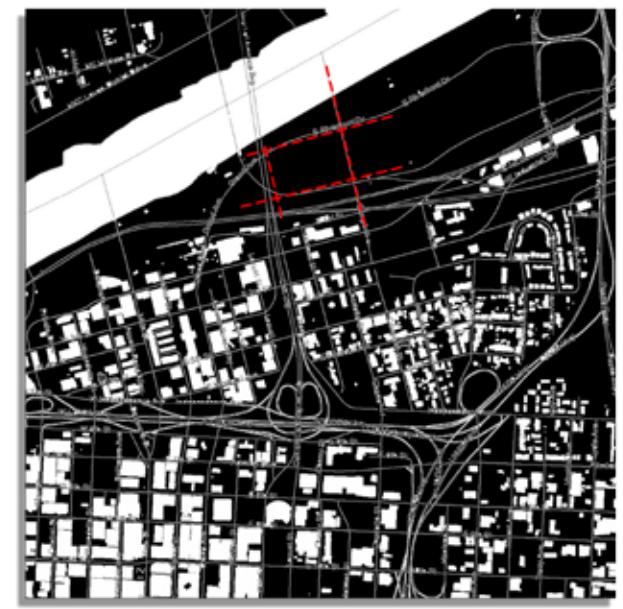


It brings people together

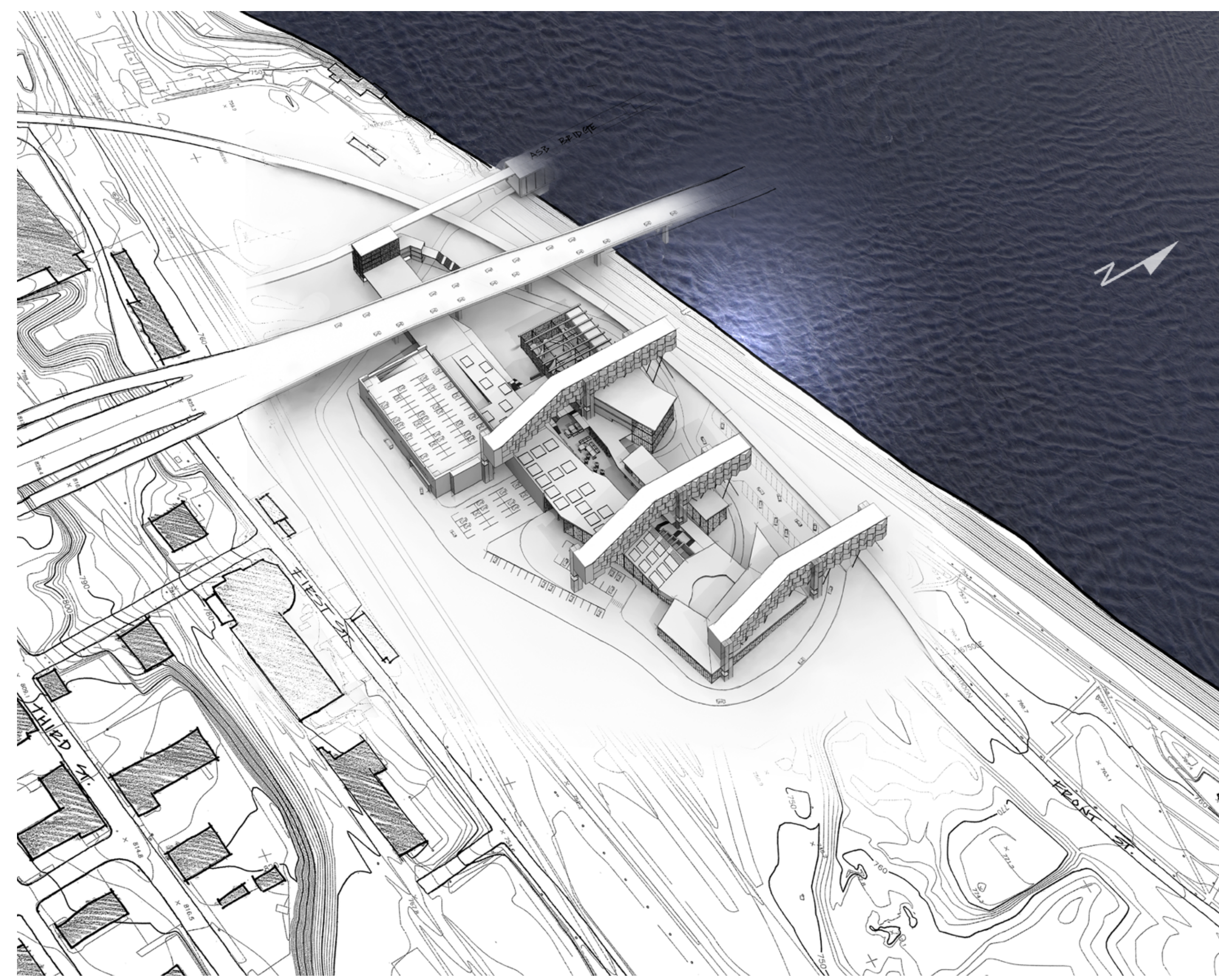
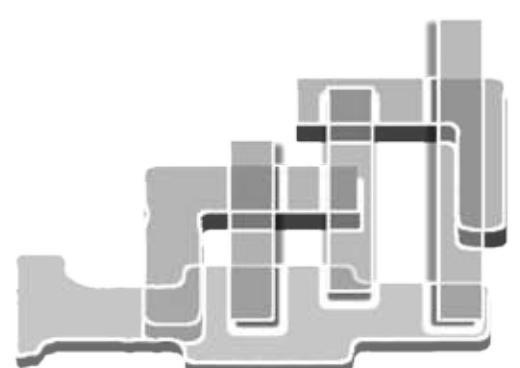
Whether visiting for a concert or a coconut, the City Market has served the surrounding area for over 150 years. Re-Envisioning the City Market offers the possibility of introducing an extension in the same spirit, that could better serve the community and be a model to future growth.

site constraints

POTENTIAL



process
progress



The west end of the Berkley Riverfront Park provides a challenge in terms of access. The Grand St. Viaduct runs beneath the Heart of America Bridge, which crosses the Missouri River into North Kansas City. Running underneath both are railroad tracks.

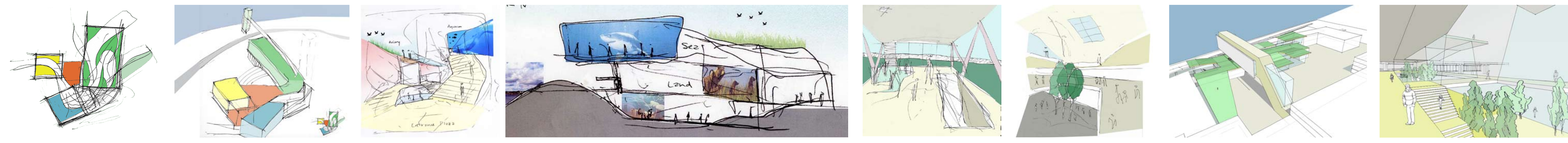
A proposed light rail system would run along the west end of the bridge, requiring a train depot to funnel people to and from the project. On site parking is found at the rear of the site, spots available near the few points of entry.

Mixed-use housing rises above the site and allows natural light and views towards the river and the city for each unit. Underneath, an intensive green roof would provide leisure and garden space.



Under the Bridge

One of the major hurdles with this site is how to respond to the infrastructure. Instead of avoiding it or absorbing it, the project envisions a space where grey water systems can respond to create a veritable forest to give new life within the area. By making a safe environment for residents, the procession from the light rail depot to the river is celebrated through illumination. And in the process the framework is laid for future connections west of the bridge.



sustainability

EDUCATION



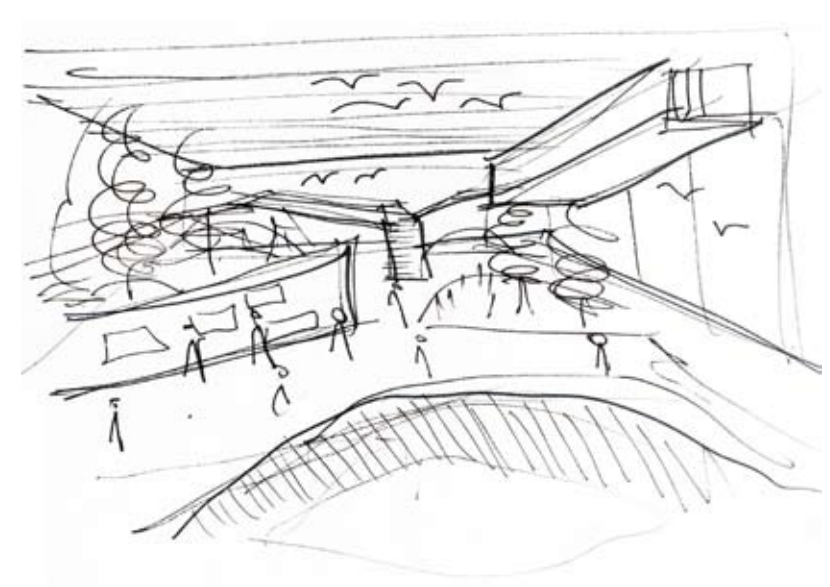
Riverquarium

The exhibits here are dedicated to the specific ecosystem of the Missouri River. Causeway and levee constructions by the Army Corp of Engineers to reduce seasonal flooding has permanently set the course of the Missouri River. Because of this, many species are left endangered in what was once their home, a tributary to the "Muddy Mississippi". The main attraction would be low lying habitat beds for the Pallid Sturgeon, a large fresh water fish native to the Missouri River. Its eerily large size evokes images of pre-historic sharks, and would be a major center of attraction as well as research within the region.



Biosquare

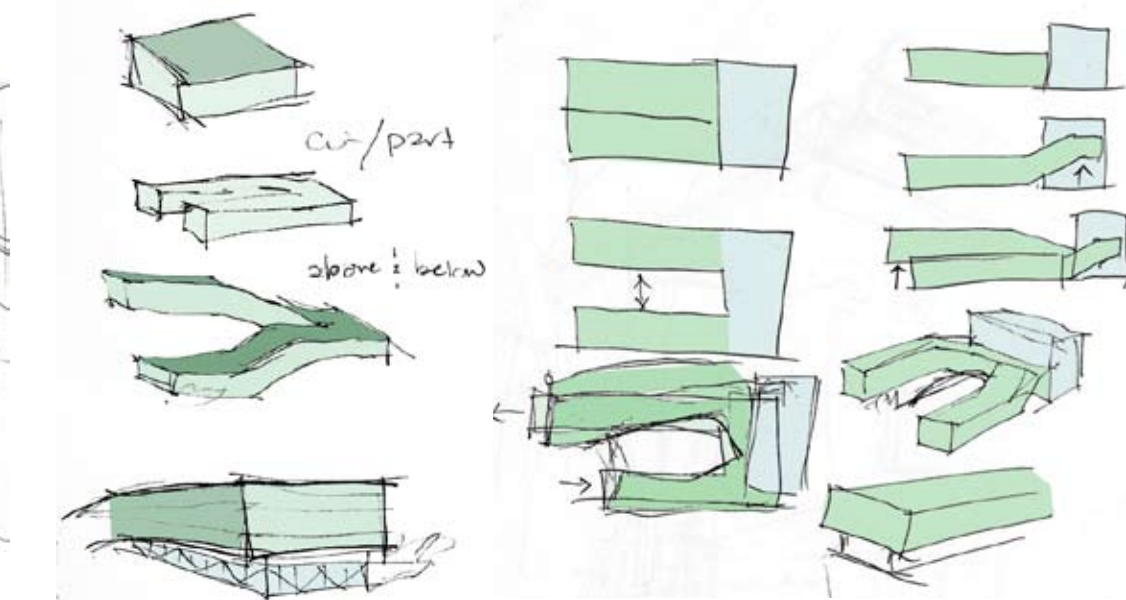
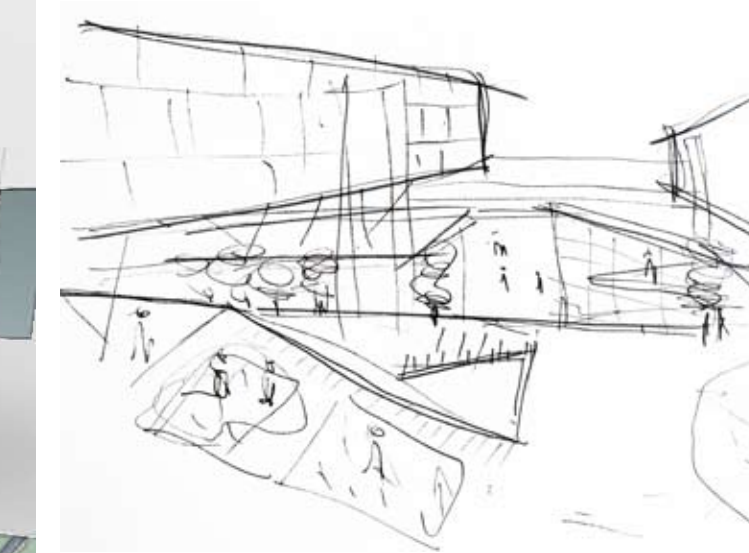
With the intent to not only use, but also educate the public about environmentally friendly strategies is the goal of the Biosquare. Letting large amounts of natural light in, to facilitate plant growth, the Biosquare serves as a destination unto itself. It is situated on the west end of the project, so water used here can be filtered directly into the grey water system that services the rest of the site.





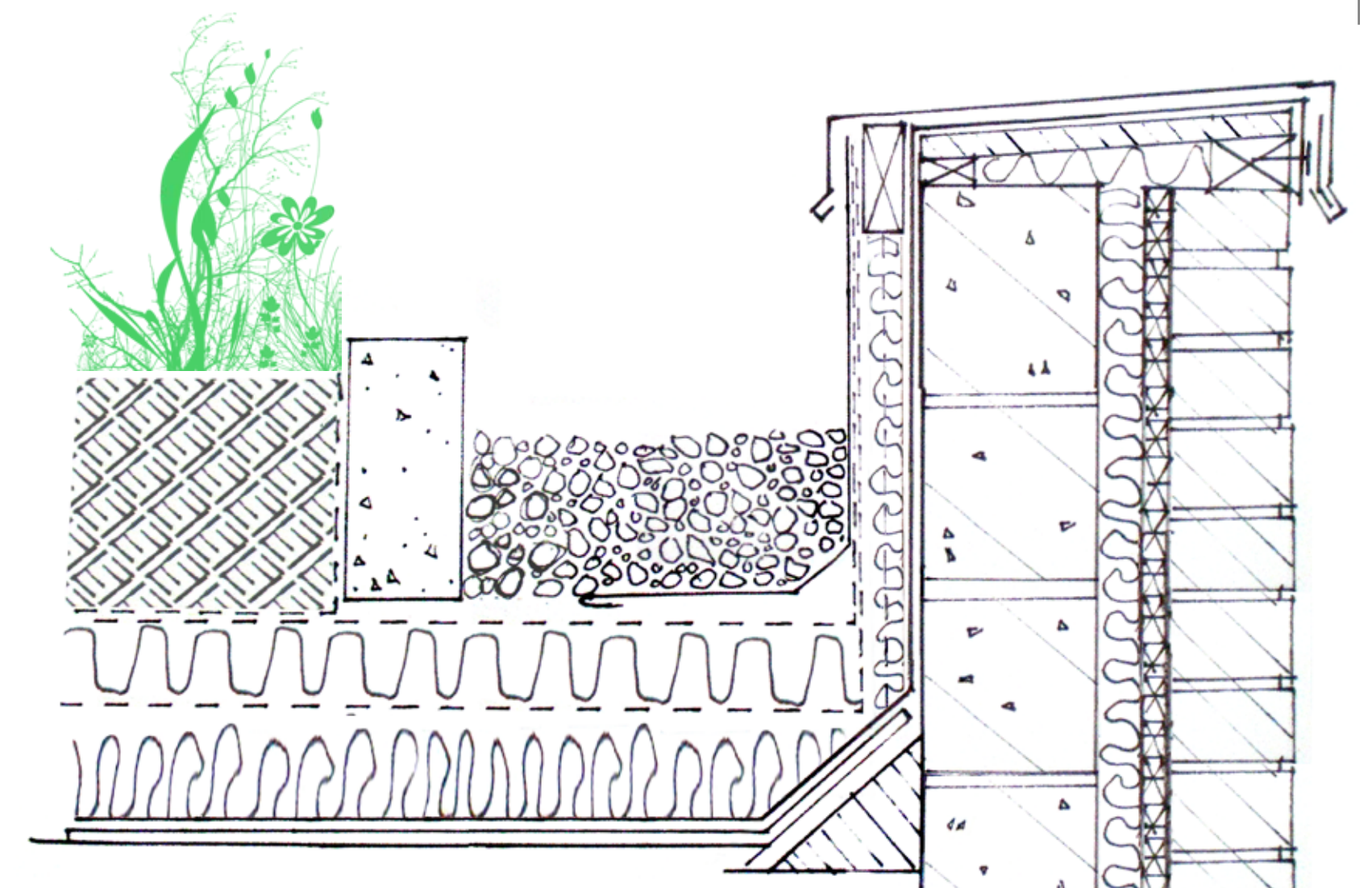
community

HYBRID



Intensive Garden Roof

By utilizing a green roof system that is built for heavy duty use, the project gains a new dimension. The roof becomes a playground, a garden, a soccer field, a place to practice Tai Chi, and more. It offers something that no other place in Kansas City has, and sets the standard for all future models.



Design

An intensive roof offers much greater design flexibility and would be highly accessible to the public. Gardens could be cultivated, leading into a possibility of residents renting out plots in order to grow their own produce to sell at the market. Harnessing the grey water system would also conserve on maintenance costs.

Structural

An intensive green roof can have a growing medium of 6" - 30". The greater weight requires extra structural support and more maintenance, but long term benefits include more efficient energy use, a longer lifetime of the structure, and high insulation values.

Incentives

Tax credits, LEED certification status, FAR Bonus, and EPA Grants are all possible benefits from including a green roof system in the project. A greater energy efficiency can also reduce energy costs over the life of the building.

Garden Roof Detail

The growing medium rests upon a layer designed to provide water storage and a root barrier to prevent the roots from tearing into the roof membranes. Insulation and another root barrier lay beneath, resting on top of the roofing membrane and structural support.

