

FINAL SCORE



Kansas

93



CHAMINADE UNIVERSITY
SILVER SWORDS

Chaminade

63

Maui Jim Maui Invitational

November 25, 2019 • Lahaina Civic Center - Lahaina



FINAL STATISTICS

Official Box Score
Kansas vs Chaminade
Game Totals -- Final Statistics
November 25, 2019 at Lahaina Civic Center - Lahaina



Kansas 93

No.	Player	S	Pts	FG	3FG	FT	OR	DR	TR	PF	A	TO	Blk	Stl	Min	+/-
00	GARRETT, MARCUS	G	8	3-6	0-1	2-4	0	4	4	1	7	0	0	4	28	30
01	DOTSON, DEVON	G	19	7-12	3-7	2-2	1	4	5	3	1	1	0	1	31	31
30	AGBAJI, OCHAI	G	11	4-9	3-6	0-0	0	1	1	2	2	2	0	1	27	29
33	MCCORMACK, DAVID	F	10	5-7	0-0	0-0	2	0	2	2	1	0	0	0	17	6
35	AZUBUIKE, UDOKA	C	15	7-8	0-0	1-2	3	4	7	3	0	4	1	1	19	16
02	BRAUN, CHRISTIAN	G	7	3-9	1-4	0-1	2	2	4	0	0	1	0	2	16	5
04	MOSS, ISAIAH	G	13	5-7	3-4	0-0	0	1	1	2	1	1	0	1	20	33
05	ELLIOTT, ELIJAH	G	3	1-1	1-1	0-0	0	0	0	0	1	1	0	0	3	-4
12	TEAHAN, CHRIS	G	0	0-1	0-1	0-0	0	0	0	1	0	0	0	0	4	-2
13	ENARUNA, TRISTAN	F	3	1-6	1-4	0-1	1	1	2	1	3	2	2	0	21	9
20	JANKOVICH, MICHAEL	G	0	0-0	0-0	0-0	0	0	0	0	1	1	0	1	3	-4
22	DESOUZA, SILVIO	F	4	2-3	0-1	0-1	1	1	2	1	0	1	0	0	11	1
	TEAM						3	2	5	0		0				
	TOTALS		93	38-69	12-29	5-11	13	20	33	16	17	14	3	11	199	

Shooting By Period

Period	FG	FG%	3FG	3FG%	FT	FT%
1st Half	18-32	56%	7-16	44%	4-7	57%
2nd Half	20-37	54%	5-13	38%	1-4	25%
Game	38-69	55.1%	12-29	41.4%	5-11	45.5%

Deadball Rebounds: 2,2
 Last FG: 2nd-00:26
 Biggest Run: 17-0
 Largest lead: By 35 at 2-04
 Technical Fouls: None.

Chaminade 63

No.	Player	S	Pts	FG	3FG	FT	OR	DR	TR	PF	A	TO	Blk	Stl	Min	+/-
03	DONLEY, ELIET	F	6	3-6	0-2	0-0	2	1	3	4	2	3	0	0	25	-10
05	DAVENPORT, TELLY	G	2	1-1	0-0	0-0	0	4	4	1	0	2	0	0	16	-15
10	ARISSOL, ANDRE	G	18	6-9	4-6	2-2	0	1	1	4	0	5	0	1	24	-8
13	CARTAINO, TYLER	G	17	7-13	2-4	1-1	0	2	2	0	2	5	0	2	31	-20
25	SMALL, KENDALL	G	10	3-7	0-0	4-6	2	6	8	2	7	6	0	3	31	-8
01	YOUNG, ROMAN	G	1	0-3	0-2	1-2	0	1	1	0	0	0	0	1	21	-33
12	AWET, BILL	F	2	1-3	0-1	0-0	1	0	1	3	1	2	0	0	12	-12
22	KREMER, KEVIN	G	0	0-1	0-1	0-0	0	3	3	0	1	3	0	0	18	-16
24	YOUNG, KOBE	F	2	1-1	0-0	0-1	0	1	1	0	0	0	0	0	2	2
34	TAKAPU, MORNINGSTAR	F	0	0-1	0-1	0-0	0	0	0	0	0	1	0	0	4	-10
55	AMARAL-ARTHAREE, ISAAC	G	5	1-5	1-4	2-2	0	1	1	0	0	0	0	1	15	-20
	TEAM						1	2	3	0		0				
	TOTALS		63	23-50	7-21	10-14	6	22	28	14	13	27	0	8	199	

Shooting By Period

Period	FG	FG%	3FG	3FG%	FT	FT%
1st Half	10-21	48%	2-6	33%	5-7	71%
2nd Half	13-29	45%	5-15	33%	5-7	71%
Game	23-50	46.0%	7-21	33.3%	10-14	71.4%

Deadball Rebounds: 3,0
 Last FG: 2nd-01:38
 Biggest Run: 7-0
 Largest lead: By 5 at 1-18
 Technical Fouls: None.

Game Notes:

Officials: Mike Scyphers, Keith Kimble, Shawn Lehigh
 Attendance: 2400

Start Time: 09:03 PM ET
 End Time: 10:57 PM ET
 Game Duration: 1:53
 Neutral Court;

Score	1st	2nd	TOT
KAN	47	46	93
CHM	27	36	63

KAN led for 34:17. CHM led for 4:22.
 Game was tied for 1:09.
 Times tied: 1 Lead Changes: 5

Points from	KAN	CHM
In the Paint	50	22
Off Turns	36	20
2nd Chance	18	5
Fast Break	13	11
Bench	30	10

Official Box Score
Kansas vs Chaminade
First Half Statistics Only
November 25, 2019 at Lahaina Civic Center - Lahaina



Kansas 47

No.	Player	S	Pts	FG	3FG	FT	OR	DR	TR	PF	A	TO	Blk	Stl	Min	+/-
00	GARRETT, MARCUS	G	8	3-4	0-1	2-4	0	3	3	1	4	0	0	3	19	18
01	DOTSON, DEVON	G	14	5-8	2-5	2-2	0	2	2	1	0	1	0	1	19	21
30	AGBAJI, OCHAI	G	11	4-7	3-5	0-0	0	0	0	1	2	1	0	1	17	16
33	MCCORMACK, DAVID	F	4	2-4	0-0	0-0	1	0	1	1	1	0	0	0	8	4
35	AZUBUIKE, UDOKA	C	0	0-0	0-0	0-0	0	1	1	2	0	2	1	0	7	8
02	BRAUN, CHRISTIAN	G	0	0-2	0-1	0-0	0	0	0	0	0	0	0	0	3	-4
04	MOSS, ISIAH	G	6	2-4	2-3	0-0	0	1	1	2	1	1	0	0	11	23
05	ELLIOTT, ELIJAH	G	0	0-0	0-0	0-0	0	0	0	0	0	0	0	0	0	0
12	TEAHAN, CHRIS	G	0	0-0	0-0	0-0	0	0	0	0	0	0	0	0	0	0
13	ENARUNA, TRISTAN	F	0	0-1	0-1	0-0	1	1	2	1	3	1	1	0	8	10
20	JANKOVICH, MICHAEL	G	0	0-0	0-0	0-0	0	0	0	0	0	0	0	0	0	0
22	DESOSA, SILVIO	F	4	2-2	0-0	0-1	1	1	2	1	0	1	0	0	8	4
	TEAM						1	0	1	0		0				
	TOTALS		47	18-32	7-16	4-7	4	9	13	10	11	7	2	5	100	

Shooting By Period

Period	FG	FG%	3FG	3FG%	FT	FT%
1st Half	18-32	56%	7-16	44%	4-7	57%
Game	38-69	55.1%	12-29	41.4%	5-11	45.5%

Deadball Rebounds: 2,2
 Last FG Half: KAN 2nd-00:26

Chaminade 27

No.	Player	S	Pts	FG	3FG	FT	OR	DR	TR	PF	A	TO	Blk	Stl	Min	+/-
03	DONLEY, ELIET	F	0	0-2	0-1	0-0	1	0	1	1	2	3	0	0	13	-6
05	DAVENPORT, TELLY	G	2	1-1	0-0	0-0	0	4	4	1	0	2	0	0	14	-13
10	ARISSOL, ANDRE	G	9	3-3	1-1	2-2	0	1	1	3	0	4	0	1	15	-10
13	CARTAINO, TYLER	G	10	4-8	1-1	1-1	0	1	1	0	0	1	0	1	14	-9
25	SMALL, KENDALL	G	3	1-2	0-0	1-2	0	3	3	1	2	2	0	2	15	-9
01	YOUNG, ROMAN	G	1	0-1	0-1	1-2	0	0	0	0	0	0	0	0	9	-20
12	AWET, BILL	F	2	1-3	0-1	0-0	0	0	0	2	0	2	0	0	5	-7
22	KREMER, KEVIN	G	0	0-0	0-0	0-0	0	3	3	0	0	2	0	0	8	-10
24	YOUNG, KOBE	F	0	0-0	0-0	0-0	0	0	0	0	0	0	0	0	0	0
34	TAKAPU, MORNINGSTAR	F	0	0-0	0-0	0-0	0	0	0	0	0	0	0	0	0	0
55	AMARAL-ARTHAREE, ISAAC	G	0	0-1	0-1	0-0	0	0	0	0	0	0	0	0	6	-16
	TEAM						1	0	1	0		0				
	TOTALS		27	10-21	2-6	5-7	2	12	14	8	4	16	0	4	100	

Shooting By Period

Period	FG	FG%	3FG	3FG%	FT	FT%
1st Half	10-21	48%	2-6	33%	5-7	71%
Game	23-50	46.0%	7-21	33.3%	10-14	71.4%

Deadball Rebounds: 3,0
 Last FG Half: CHM 2nd-01:38

Game Notes:

Officials: **Mike Scyphers, Keith Kimble, Shawn Lehigh**
 Attendance: **2400**

Start Time: **09:03 PM ET**
 End Time: **10:57 PM ET**
 Game Duration: **1:53**
 Neutral Court;

Score	1st	2nd	TOT
KAN	47	46	93
CHM	27	36	63

Points from (This Period)	KAN	CHM
In the Paint	20	12
Off Turns	24	10
2nd Chance	6	0
Fast Break	11	5
Bench	10	3

Official Play-By-Play
Kansas vs Chaminade
First Half
November 25, 2019 at Lahaina Civic Center - Lahaina



Period 1

Starters:

Kansas: 00 GARRETT, MARCUS (G); 1 DOTSON, DEVON (G); 30 AGBAJI, OCHAI (G); 33 MCCORMACK, DAVID (F); 35 AZUBUIKE, UDOKA (C);
Chaminade: 10 ARISSOL, ANDRE (G); 13 CARTAINO, TYLER (G); 25 SMALL, KENDALL (G); 3 DONLEY, ELIET (F); 5 DAVENPORT, TELY (G);

Time	VISITORS: Kansas	Score	Margin	HOME: Chaminade
19:38	MISSED 3PTR by DOTSON, DEVON			
19:34				REBOUND (DEF) by SMALL, KENDALL
19:32	FOUL (PERSONAL) by DOTSON, DEVON			
19:28		2-0	H 2	GOOD! JUMPER by CARTAINO, TYLER
19:28				ASSIST by SMALL, KENDALL
19:12	TURNOVER (LOSTBALL) by AZUBUIKE, UDOKA			
19:12				STEAL by ARISSOL, ANDRE
18:48		5-0	H 5	GOOD! 3PTR by ARISSOL, ANDRE
18:31	TURNOVER (BADPASS) by AGBAJI, OCHAI			
18:31				STEAL by CARTAINO, TYLER
18:30	FOUL (PERSONAL) by MCCORMACK, DAVID			
18:30	SUB OUT: MCCORMACK, DAVID			
18:30	SUB IN: DESOUSA, SILVIO			
18:25				MISSED JUMPER by CARTAINO, TYLER
18:22	REBOUND (DEF) by DOTSON, DEVON			
18:15				FOUL (PERSONAL) by DAVENPORT, TELY
18:15	MISSED FT by GARRETT, MARCUS			
18:15	REBOUND (OFF) by TEAM			
18:15	GOOD! FT by GARRETT, MARCUS	5-1	H 4	
17:57				TURNOVER (TRAVEL) by DONLEY, ELIET
17:43	TURNOVER (BADPASS) by AZUBUIKE, UDOKA			
17:43				STEAL by SMALL, KENDALL
17:35				TURNOVER (BADPASS) by CARTAINO, TYLER
17:35	STEAL by GARRETT, MARCUS			
17:29	GOOD! LAYUP by DOTSON, DEVON [FB]	5-3	H 2	
17:29	ASSIST by GARRETT, MARCUS			
17:16				TURNOVER (BADPASS) by SMALL, KENDALL
17:04	MISSED 3PTR by DOTSON, DEVON			
16:59				REBOUND (DEF) by SMALL, KENDALL
16:54		7-3	H 4	GOOD! LAYUP by DAVENPORT, TELY [FB]
16:54				ASSIST by SMALL, KENDALL
16:35	MISSED 3PTR by GARRETT, MARCUS			
16:31				REBOUND (DEF) by DAVENPORT, TELY
16:25				MISSED LAYUP by CARTAINO, TYLER
16:22	REBOUND (DEF) by DESOUSA, SILVIO			
16:19				FOUL (PERSONAL) by SMALL, KENDALL
16:19				SUB OUT: DONLEY, ELIET
16:19				SUB OUT: ARISSOL, ANDRE
16:19				SUB OUT: SMALL, KENDALL
16:19				SUB IN: YOUNG, ROMAN
16:19				SUB IN: KREMER, KEVIN
16:19				SUB IN: AMARAL-ARTHAREE, ISAAC
16:19	SUB OUT: DESOUSA, SILVIO			
16:19	SUB IN: MOSS, ISIAH			
16:04	GOOD! LAYUP by GARRETT, MARCUS [PNT]	7-5	H 2	
15:43	FOUL (PERSONAL) by MOSS, ISIAH			
15:43				
15:36	FOUL (PERSONAL) by AZUBUIKE, UDOKA			
15:28				TURNOVER (OTHER) by KREMER, KEVIN
15:06	GOOD! LAYUP by GARRETT, MARCUS	7-7	T	
14:48				MISSED LAYUP by CARTAINO, TYLER
14:48	BLOCK by AZUBUIKE, UDOKA			
14:46				REBOUND (OFF) by TEAM
14:46				SUB OUT: DAVENPORT, TELY
14:46				SUB OUT: CARTAINO, TYLER
14:46				SUB IN: ARISSOL, ANDRE
14:46				SUB IN: SMALL, KENDALL
14:35				TURNOVER (LOSTBALL) by KREMER, KEVIN
14:29	GOOD! 3PTR by AGBAJI, OCHAI [FB]	7-10	V 3	
14:29	ASSIST by GARRETT, MARCUS			
14:28				TIMEOUT 30SEC
14:28				SUB OUT: KREMER, KEVIN
14:28				SUB IN: DONLEY, ELIET
14:09				MISSED JUMPER by DONLEY, ELIET
14:06				REBOUND (OFF) by DONLEY, ELIET
14:02				MISSED 3PTR by YOUNG, ROMAN
13:58	REBOUND (DEF) by DOTSON, DEVON			
13:51	GOOD! 3PTR by MOSS, ISIAH	7-13	V 6	
13:51	ASSIST by AGBAJI, OCHAI			
13:39				MISSED 3PTR by AMARAL-ARTHAREE, ISAAC

Time	VISITORS: Kansas	Score	Margin	HOME: Chaminade
13:36	REBOUND (DEF) by AZUBUIKE, UDOKA			
13:20	GOOD! LAYUP by DOTSON, DEVON	7-15	V 8	
13:02				MISSED 3PTR by DONLEY, ELIET
12:59	REBOUND (DEF) by GARRETT, MARCUS			
12:54	MISSED 3PTR by AGBAJI, OCHAI			
12:52				REBOUND (DEF) by ARISSOL, ANDRE
12:52	FOUL (PERSONAL) by AZUBUIKE, UDOKA			
12:52				SUB OUT: YOUNG, ROMAN
12:52				SUB OUT: AMARAL-ARTHAREE, ISAAC
12:52				SUB IN: DAVENPORT, TELLY
12:52				SUB IN: CARTAINO, TYLER
12:52	SUB OUT: AGBAJI, OCHAI			
12:52	SUB OUT: AZUBUIKE, UDOKA			
12:52	SUB IN: ENARUNA, TRISTAN			
12:52	SUB IN: MCCORMACK, DAVID			
12:28				TURNOVER (BADPASS) by DONLEY, ELIET
12:07	GOOD! 3PTR by DOTSON, DEVON	7-18	V 11	
12:07	ASSIST by ENARUNA, TRISTAN			
11:56				TURNOVER (LOSTBALL) by DONLEY, ELIET
11:56	STEAL by GARRETT, MARCUS			
11:56				
11:56	SUB OUT: DOTSON, DEVON			
11:56	SUB IN: BRAUN, CHRISTIAN			
11:41	MISSED LAYUP by BRAUN, CHRISTIAN			
11:37	REBOUND (OFF) by ENARUNA, TRISTAN			
11:36	GOOD! JUMPER by MCCORMACK, DAVID	7-20	V 13	
11:36	ASSIST by ENARUNA, TRISTAN			
11:19		9-20	V 11	GOOD! LAYUP by CARTAINO, TYLER
11:19				ASSIST by DONLEY, ELIET
11:19	FOUL (PERSONAL) by GARRETT, MARCUS			
11:19		10-20	V 10	GOOD! FT by CARTAINO, TYLER
10:59	MISSED 3PTR by ENARUNA, TRISTAN			
10:55				REBOUND (DEF) by DAVENPORT, TELLY
10:52	SUB OUT: GARRETT, MARCUS			
10:52	SUB IN: DOTSON, DEVON			
10:52				MISSED JUMPER by CARTAINO, TYLER
10:52	BLOCK by ENARUNA, TRISTAN			
10:52	REBOUND (DEF) by ENARUNA, TRISTAN			
10:46	MISSED 3PTR by BRAUN, CHRISTIAN			
10:42				REBOUND (DEF) by DAVENPORT, TELLY
10:39				TURNOVER (BADPASS) by ARISSOL, ANDRE
10:39	STEAL by DOTSON, DEVON			
10:15	MISSED JUMPER by MOSS, ISAIAH			
10:12				REBOUND (DEF) by SMALL, KENDALL
10:09				MISSED JUMPER by SMALL, KENDALL
10:05	REBOUND (DEF) by MOSS, ISAIAH			
10:03	GOOD! LAYUP by DOTSON, DEVON [FB]	10-22	V 12	
10:03	ASSIST by MOSS, ISAIAH			
09:47				TURNOVER (TRAVEL) by AWET, BILL
09:47				SUB OUT: DONLEY, ELIET
09:47				SUB OUT: ARISSOL, ANDRE
09:47				SUB OUT: CARTAINO, TYLER
09:47				SUB IN: YOUNG, ROMAN
09:47				SUB IN: AWET, BILL
09:47				SUB IN: KREMER, KEVIN
09:47	SUB OUT: ENARUNA, TRISTAN			
09:47	SUB OUT: MCCORMACK, DAVID			
09:47	SUB IN: DESOUSA, SILVIO			
09:47	SUB IN: AGBAJI, OCHAI			
09:34	SUB OUT: BRAUN, CHRISTIAN			
09:34	SUB IN: GARRETT, MARCUS			
09:25				SUB OUT: SMALL, KENDALL
09:25				SUB IN: ARISSOL, ANDRE
09:13	MISSED 3PTR by AGBAJI, OCHAI			
09:09	REBOUND (OFF) by DESOUSA, SILVIO			
09:09	GOOD! LAYUP by DESOUSA, SILVIO	10-24	V 14	
08:57				FOUL (OFF) by AWET, BILL
08:57				TURNOVER (OFFENSIVE) by AWET, BILL
08:39	GOOD! 3PTR by DOTSON, DEVON	10-27	V 17	
08:39	ASSIST by AGBAJI, OCHAI			
08:18		12-27	V 15	GOOD! LAYUP by AWET, BILL
08:11	TURNOVER (TRAVEL) by MOSS, ISAIAH			
08:11				SUB OUT: DAVENPORT, TELLY
08:11				SUB OUT: AWET, BILL
08:11				SUB IN: DONLEY, ELIET
08:11				SUB IN: CARTAINO, TYLER
07:54	FOUL (PERSONAL) by AGBAJI, OCHAI			
07:54				SUB OUT: YOUNG, ROMAN
07:54				SUB IN: SMALL, KENDALL

Time	VISITORS: Kansas	Score	Margin	HOME: Chaminade
07:54	SUB OUT: MOSS, ISIAIAH			
07:54	SUB IN: BRAUN, CHRISTIAN			
07:54		13-27	V 14	GOOD! FT by ARISSOL, ANDRE
07:54		14-27	V 13	GOOD! FT by ARISSOL, ANDRE
07:24	TURNOVER (LOSTBALL) by DESOUSA, SILVIO			
07:24				STEAL by SMALL, KENDALL
07:10		17-27	V 10	GOOD! 3PTR by CARTAINO, TYLER
07:07	TIMEOUT 30SEC			
07:07	SUB OUT: BRAUN, CHRISTIAN			
07:07	SUB OUT: DESOUSA, SILVIO			
07:07	SUB IN: MOSS, ISIAIAH			
07:07	SUB IN: MCCORMACK, DAVID			
06:49	GOOD! 3PTR by MOSS, ISIAIAH	17-30	V 13	
06:49	ASSIST by MCCORMACK, DAVID			
06:35		19-30	V 11	GOOD! LAYUP by CARTAINO, TYLER
06:35				ASSIST by DONLEY, ELIET
06:17				FOUL (PERSONAL) by ARISSOL, ANDRE
06:02	MISSED 3PTR by MOSS, ISIAIAH			
05:57				REBOUND (DEF) by KREMER, KEVIN
05:53				TURNOVER (LOSTBALL) by ARISSOL, ANDRE
05:53				SUB OUT: DONLEY, ELIET
05:53				SUB OUT: KREMER, KEVIN
05:53				SUB OUT: SMALL, KENDALL
05:53				SUB IN: YOUNG, ROMAN
05:53				SUB IN: DAVENPORT, TELLY
05:53				SUB IN: AWET, BILL
05:45	MISSED 3PTR by DOTSON, DEVON			
05:44	REBOUND (OFF) by TEAM			
05:44				FOUL (PERSONAL) by ARISSOL, ANDRE
05:44				SUB OUT: ARISSOL, ANDRE
05:44				SUB IN: AMARAL-ARTHAREE, ISAAC
05:24				FOUL (PERSONAL) by AWET, BILL
05:24	GOOD! FT by GARRETT, MARCUS	19-31	V 12	
05:24	MISSED FT by GARRETT, MARCUS			
05:24				REBOUND (DEF) by CARTAINO, TYLER
05:10				TURNOVER (BADPASS) by DAVENPORT, TELLY
05:10	STEAL by AGBAJI, OCHAI			
05:05	GOOD! DUNK by AGBAJI, OCHAI [FB]	19-33	V 14	
04:44	FOUL (PERSONAL) by MOSS, ISIAIAH			
04:44				MISSED FT by YOUNG, ROMAN
04:44				REBOUND (OFF) by TEAM
04:44	SUB OUT: MOSS, ISIAIAH			
04:44	SUB IN: ENARUNA, TRISTAN			
04:44		20-33	V 13	GOOD! FT by YOUNG, ROMAN
04:25	MISSED LAYUP by MCCORMACK, DAVID			
04:21	REBOUND (OFF) by MCCORMACK, DAVID			
04:20	GOOD! LAYUP by MCCORMACK, DAVID	20-35	V 15	
04:09				MISSED 3PTR by AWET, BILL
04:06	REBOUND (DEF) by GARRETT, MARCUS			
03:59	FOUL (OFF) by ENARUNA, TRISTAN			
03:59	TURNOVER (OFFENSIVE) by ENARUNA, TRISTAN			
03:59				SUB OUT: CARTAINO, TYLER
03:59				SUB IN: SMALL, KENDALL
03:37				TURNOVER (TRAVEL) by DAVENPORT, TELLY
03:18	MISSED LAYUP by MCCORMACK, DAVID			
03:14				REBOUND (DEF) by DAVENPORT, TELLY
03:07				MISSED LAYUP by AWET, BILL
03:04	REBOUND (DEF) by GARRETT, MARCUS			
03:02	TURNOVER (BADPASS) by DOTSON, DEVON			
03:02				SUB OUT: DAVENPORT, TELLY
03:02				SUB OUT: AWET, BILL
03:02				SUB OUT: AMARAL-ARTHAREE, ISAAC
03:02				SUB IN: DONLEY, ELIET
03:02				SUB IN: ARISSOL, ANDRE
03:02				SUB IN: CARTAINO, TYLER
03:02	SUB OUT: MCCORMACK, DAVID			
03:02	SUB IN: DESOUSA, SILVIO			
02:42		22-35	V 13	GOOD! JUMPER by ARISSOL, ANDRE
02:30	GOOD! 3PTR by AGBAJI, OCHAI	22-38	V 16	
02:30	ASSIST by ENARUNA, TRISTAN			
02:10				SUB OUT: YOUNG, ROMAN
02:10				SUB IN: KREMER, KEVIN
02:08				TURNOVER (TRAVEL) by ARISSOL, ANDRE
01:54	GOOD! 3PTR by AGBAJI, OCHAI	22-41	V 19	
01:54	ASSIST by GARRETT, MARCUS			
01:46	FOUL (PERSONAL) by DESOUSA, SILVIO			
01:46				MISSED FT by SMALL, KENDALL
01:46				REBOUND (OFF) by TEAM
01:46		23-41	V 18	GOOD! FT by SMALL, KENDALL [FB]

Time	VISITORS: Kansas	Score	Margin	HOME: Chaminade
01:32	GOOD! LAYUP by DESOUSA, SILVIO	23-43	V 20	
01:32	ASSIST by GARRETT, MARCUS			
01:24		25-43	V 18	GOOD! LAYUP by ARISSOL, ANDRE [FB]
01:17				SUB OUT: CARTAINO, TYLER
01:17				SUB IN: DAVENPORT, TELLY
01:17	MISSED FT by DESOUSA, SILVIO			
01:15				REBOUND (DEF) by KREMER, KEVIN
01:09				TURNOVER (LOSTBALL) by ARISSOL, ANDRE
01:09	STEAL by GARRETT, MARCUS			
01:03	GOOD! LAYUP by GARRETT, MARCUS [FB]	25-45	V 20	
00:50				TURNOVER (BADPASS) by SMALL, KENDALL
00:34	MISSED JUMPER by AGBAJI, OCHAI			
00:30				REBOUND (DEF) by KREMER, KEVIN
00:21		27-45	V 18	GOOD! LAYUP by SMALL, KENDALL
00:05				FOUL (PERSONAL) by ARISSOL, ANDRE
00:05				SUB OUT: ARISSOL, ANDRE
00:05				SUB IN: CARTAINO, TYLER
00:05	GOOD! FT by DOTSON, DEVON	27-46	V 19	
00:05	GOOD! FT by DOTSON, DEVON	27-47	V 20	
00:05				SUB OUT: DAVENPORT, TELLY
00:05				SUB IN: YOUNG, ROMAN
00:05	SUB OUT: DOTSON, DEVON			
00:05	SUB IN: BRAUN, CHRISTIAN			

Kansas 47, Chaminade 27

Points from (This Period)	KAN	CHM
In the Paint	20	12
Off Turns	24	10
2nd Chance	6	0
Fast Break	11	5
Bench	10	3

Official Box Score
Kansas vs Chaminade
Second Half Statistics Only
November 25, 2019 at Lahaina Civic Center - Lahaina



Kansas 46

No.	Player	S	Pts	FG	3FG	FT	OR	DR	TR	PF	A	TO	Blk	Stl	Min	+/-
00	GARRETT, MARCUS	G	0	0-2	0-0	0-0	0	1	1	0	3	0	0	1	9	12
01	DOTSON, DEVON	G	5	2-4	1-2	0-0	1	2	3	2	1	0	0	0	12	10
30	AGBAJI, OCHAI	G	0	0-2	0-1	0-0	0	1	1	1	0	1	0	0	9	13
33	MCCORMACK, DAVID	F	6	3-3	0-0	0-0	1	0	1	1	0	0	0	0	8	2
35	AZUBUIKE, UDOKA	C	15	7-8	0-0	1-2	3	3	6	1	0	2	0	1	12	8
02	BRAUN, CHRISTIAN	G	7	3-7	1-3	0-1	2	2	4	0	0	1	0	2	13	9
04	MOSS, ISAIAH	G	7	3-3	1-1	0-0	0	0	0	0	0	0	0	1	9	10
05	ELLIOTT, ELIJAH	G	3	1-1	1-1	0-0	0	0	0	0	1	1	0	0	3	-4
12	TEAHAN, CHRIS	G	0	0-1	0-1	0-0	0	0	0	1	0	0	0	0	4	-2
13	ENARUNA, TRISTAN	F	3	1-5	1-3	0-1	0	0	0	0	0	1	1	0	13	-1
20	JANKOVICH, MICHAEL	G	0	0-0	0-0	0-0	0	0	0	0	1	1	0	1	3	-4
22	DESOUSA, SILVIO	F	0	0-1	0-1	0-0	0	0	0	0	0	0	0	0	3	-3
	TEAM						2	2	4	0	0	0	0	0		
	TOTALS		46	20-37	5-13	1-4	9	11	20	6	6	7	1	6	99	

Shooting By Period

Period	FG	FG%	3FG	3FG%	FT	FT%
2nd Half	20-37	54%	5-13	38%	1-4	25%
Game	38-69	55.1%	12-29	41.4%	5-11	45.5%

Deadball Rebounds: 2.2

Last FG Half: KAN -

Chaminade 36

No.	Player	S	Pts	FG	3FG	FT	OR	DR	TR	PF	A	TO	Blk	Stl	Min	+/-
03	DONLEY, ELIET	F	6	3-4	0-1	0-0	1	1	2	3	0	0	0	0	12	-4
05	DAVENPORT, TELLY	G	0	0-0	0-0	0-0	0	0	0	0	0	0	0	0	2	-2
10	ARISSOL, ANDRE	G	9	3-6	3-5	0-0	0	0	0	1	0	1	0	0	9	2
13	CARTAINO, TYLER	G	7	3-5	1-3	0-0	0	1	1	0	2	4	0	1	16	-11
25	SMALL, KENDALL	G	7	2-5	0-0	3-4	2	3	5	1	5	4	0	1	16	1
01	YOUNG, ROMAN	G	0	0-2	0-1	0-0	0	1	1	0	0	0	0	1	11	-13
12	AWET, BILL	F	0	0-0	0-0	0-0	1	0	1	1	1	0	0	0	7	-5
22	KREMER, KEVIN	G	0	0-1	0-1	0-0	0	0	0	0	1	1	0	0	10	-6
24	YOUNG, KOBE	F	2	1-1	0-0	0-1	0	1	1	0	0	0	0	0	2	2
34	TAKAPU, MORNINGSTAR	F	0	0-1	0-1	0-0	0	0	0	0	0	1	0	0	4	-10
55	AMARAL-ARTHAREE, ISAAC	G	5	1-4	1-3	2-2	0	1	1	0	0	0	0	1	9	-4
	TEAM						0	2	2	0	0	0	0	0		
	TOTALS		36	13-29	5-15	5-7	4	10	14	6	9	11	0	4	99	

Shooting By Period

Period	FG	FG%	3FG	3FG%	FT	FT%
2nd Half	13-29	45%	5-15	33%	5-7	71%
Game	23-50	46.0%	7-21	33.3%	10-14	71.4%

Deadball Rebounds: 3.0

Last FG Half: CHM -

Game Notes:

Officials: Mike Scyphers, Keith Kimble, Shawn Lehigh
Attendance: 2400

Start Time: 09:03 PM ET

End Time: 10:57 PM ET

Game Duration: 1:53

Neutral Court;

Score	1st	2nd	TOT
KAN	47	46	93
CHM	27	36	63

Points from (This Period)	KAN	CHM
In the Paint	30	10
Off Turns	12	10
2nd Chance	12	5
Fast Break	2	6
Bench	20	7

Official Play-By-Play
Kansas vs Chaminade
Second Half
November 25, 2019 at Lahaina Civic Center - Lahaina



Period 2

Starters:

Kansas: 00 GARRETT, MARCUS (G); 1 DOTSON, DEVON (G); 30 AGBAJI, OCHAI (G); 33 MCCORMACK, DAVID (F); 35 AZUBUIKE, UDOKA (C);
Chaminade: 10 ARISSOL, ANDRE (G); 13 CARTAINO, TYLER (G); 25 SMALL, KENDALL (G); 3 DONLEY, ELIET (F); 5 DAVENPORT, TELLY (G);

Time	VISITORS: Kansas	Score	Margin	HOME: Chaminade
20:00				SUB OUT: YOUNG, ROMAN
20:00				SUB OUT: KREMER, KEVIN
20:00				SUB IN: DAVENPORT, TELLY
20:00				SUB IN: ARISSOL, ANDRE
20:00	SUB OUT: BRAUN, CHRISTIAN			
20:00	SUB OUT: ENARUNA, TRISTAN			
20:00	SUB OUT: DESOUSA, SILVIO			
20:00	SUB IN: DOTSON, DEVON			
20:00	SUB IN: MOSS, ISAIAH			
20:00	SUB IN: AZUBUIKE, UDOKA			
19:39				MISSED LAYUP by SMALL, KENDALL
19:32				REBOUND (OFF) by SMALL, KENDALL
19:32		29-47	V 18	GOOD! LAYUP by SMALL, KENDALL
19:21				FOUL (PERSONAL) by DONLEY, ELIET
19:21	MISSED FT by AZUBUIKE, UDOKA			
19:21	REBOUND (OFF) by TEAM			
19:21	GOOD! FT by AZUBUIKE, UDOKA	29-48	V 19	
18:54				TURNOVER (LOSTBALL) by CARTAINO, TYLER
18:54	STEAL by GARRETT, MARCUS			
18:54				FOUL (PERSONAL) by ARISSOL, ANDRE
18:54				SUB OUT: ARISSOL, ANDRE
18:54				SUB IN: YOUNG, ROMAN
18:40	GOOD! 3PTR by DOTSON, DEVON	29-51	V 22	
18:40	ASSIST by GARRETT, MARCUS			
18:23				MISSED 3PTR by YOUNG, ROMAN
18:20	REBOUND (DEF) by GARRETT, MARCUS			
18:10	MISSED JUMPER by AGBAJI, OCHAI			
18:09				REBOUND (DEF) by DONLEY, ELIET
18:09	FOUL (PERSONAL) by AZUBUIKE, UDOKA			
18:09				SUB OUT: DAVENPORT, TELLY
18:09				SUB IN: KREMER, KEVIN
17:53		31-51	V 20	GOOD! JUMPER by SMALL, KENDALL
17:24				FOUL (PERSONAL) by SMALL, KENDALL
17:11	GOOD! DUNK by AZUBUIKE, UDOKA	31-53	V 22	
17:00				MISSED 3PTR by CARTAINO, TYLER
16:57	REBOUND (DEF) by DOTSON, DEVON			
16:51				FOUL (PERSONAL) by DONLEY, ELIET
16:51				SUB OUT: DONLEY, ELIET
16:51				SUB IN: AWET, BILL
16:42	GOOD! LAYUP by MOSS, ISAIAH	31-55	V 24	
16:30		33-55	V 22	GOOD! LAYUP by CARTAINO, TYLER
16:13	GOOD! LAYUP by AZUBUIKE, UDOKA	33-57	V 24	
15:58				TURNOVER (BADPASS) by KREMER, KEVIN
15:58	STEAL by MOSS, ISAIAH			
15:52	GOOD! LAYUP by MOSS, ISAIAH [FB]	33-59	V 26	
15:51				TIMEOUT 30SEC
15:51				SUB OUT: SMALL, KENDALL
15:51				SUB IN: AMARAL-ARTHAREE, ISAAC
15:32				MISSED 3PTR by KREMER, KEVIN
15:29	REBOUND (DEF) by AZUBUIKE, UDOKA			
15:15	GOOD! DUNK by AZUBUIKE, UDOKA	33-61	V 28	
15:15	ASSIST by GARRETT, MARCUS			
15:07	FOUL (PERSONAL) by DOTSON, DEVON			
15:07				SUB OUT: AWET, BILL
15:07				SUB OUT: KREMER, KEVIN
15:07				SUB IN: DONLEY, ELIET
15:07				SUB IN: SMALL, KENDALL
15:07	SUB OUT: GARRETT, MARCUS			
15:07	SUB OUT: MOSS, ISAIAH			
15:07	SUB IN: BRAUN, CHRISTIAN			
15:07	SUB IN: ENARUNA, TRISTAN			
15:02				TURNOVER (BADPASS) by CARTAINO, TYLER
15:02	STEAL by AZUBUIKE, UDOKA			
14:55	TURNOVER (BADPASS) by AGBAJI, OCHAI			
14:55				STEAL by YOUNG, ROMAN
14:45				MISSED JUMPER by AMARAL-ARTHAREE, ISAAC
14:42	REBOUND (DEF) by AZUBUIKE, UDOKA			
14:22	MISSED 3PTR by ENARUNA, TRISTAN			

Time	VISITORS: Kansas	Score	Margin	HOME: Chaminade
14:19	REBOUND (OFF) by BRAUN, CHRISTIAN			
14:18	MISSED LAYUP by BRAUN, CHRISTIAN			
14:15				REBOUND (DEF) by SMALL, KENDALL
14:12				MISSED JUMPER by SMALL, KENDALL
14:12	BLOCK by ENARUNA, TRISTAN			
14:06				REBOUND (OFF) by SMALL, KENDALL
14:02		36-61	V 25	GOOD! 3PTR by CARTAINO, TYLER
14:02				ASSIST by SMALL, KENDALL
13:44	GOOD! LAYUP by AZUBUIKE, UDOKA [PNT]	36-63	V 27	
13:29				MISSED JUMPER by SMALL, KENDALL
13:25	REBOUND (DEF) by AZUBUIKE, UDOKA			
13:18	MISSED 3PTR by DOTSON, DEVON			
13:15				REBOUND (DEF) by SMALL, KENDALL
13:06	FOUL (PERSONAL) by AGBAJI, OCHAI			
13:06		37-63	V 26	GOOD! FT by AMARAL-ARTHAREE, ISAAC
13:06				SUB OUT: YOUNG, ROMAN
13:06				SUB IN: ARISSOL, ANDRE
13:06	SUB OUT: DOTSON, DEVON			
13:06	SUB OUT: AGBAJI, OCHAI			
13:06	SUB OUT: AZUBUIKE, UDOKA			
13:06	SUB IN: GARRETT, MARCUS			
13:06	SUB IN: MOSS, ISAIAH			
13:06	SUB IN: MCCORMACK, DAVID			
13:06		38-63	V 25	GOOD! FT by AMARAL-ARTHAREE, ISAAC
13:06				SUB OUT: AMARAL-ARTHAREE, ISAAC
13:06				SUB IN: KREMER, KEVIN
12:57	MISSED LAYUP by ENARUNA, TRISTAN			
12:51				REBOUND (DEF) by TEAM
12:29		40-63	V 23	GOOD! JUMPER by DONLEY, ELIET
12:29				ASSIST by CARTAINO, TYLER
12:00	GOOD! 3PTR by MOSS, ISAIAH	40-66	V 26	
12:00	ASSIST by GARRETT, MARCUS			
11:51				TURNOVER (BADPASS) by SMALL, KENDALL
11:51	STEAL by BRAUN, CHRISTIAN			
11:46	MISSED LAYUP by GARRETT, MARCUS			
11:44				REBOUND (DEF) by TEAM
11:44				
11:44				SUB OUT: DONLEY, ELIET
11:44				SUB IN: AWET, BILL
11:33				TURNOVER (TRAVEL) by ARISSOL, ANDRE
11:18	MISSED LAYUP by GARRETT, MARCUS			
11:14	REBOUND (OFF) by MCCORMACK, DAVID			
11:14	GOOD! DUNK by MCCORMACK, DAVID	40-68	V 28	
11:14				TURNOVER (TRAVEL) by SMALL, KENDALL
10:59	GOOD! JUMPER by MCCORMACK, DAVID [PNT]	40-70	V 30	
10:43		43-70	V 27	GOOD! 3PTR by ARISSOL, ANDRE
10:43				ASSIST by SMALL, KENDALL
10:31	MISSED LAYUP by ENARUNA, TRISTAN			
10:28				REBOUND (DEF) by CARTAINO, TYLER
09:58				MISSED LAYUP by ARISSOL, ANDRE
09:58	REBOUND (DEF) by TEAM			
09:58				SUB OUT: KREMER, KEVIN
09:58				SUB IN: YOUNG, ROMAN
09:50	MISSED 3PTR by ENARUNA, TRISTAN			
09:47				REBOUND (DEF) by YOUNG, ROMAN
09:42				MISSED JUMPER by YOUNG, ROMAN
09:40	REBOUND (DEF) by BRAUN, CHRISTIAN			
09:22	GOOD! LAYUP by MCCORMACK, DAVID [PNT]	43-72	V 29	
09:08	FOUL (PERSONAL) by MCCORMACK, DAVID			
09:08		44-72	V 28	GOOD! FT by SMALL, KENDALL
09:08				SUB OUT: ARISSOL, ANDRE
09:08				SUB OUT: AWET, BILL
09:08				SUB OUT: CARTAINO, TYLER
09:08				SUB IN: DONLEY, ELIET
09:08				SUB IN: TAKAPU, MORNINGSTAR
09:08				SUB IN: AMARAL-ARTHAREE, ISAAC
09:08	SUB OUT: GARRETT, MARCUS			
09:08	SUB OUT: MOSS, ISAIAH			
09:08	SUB IN: DOTSON, DEVON			
09:08	SUB IN: AGBAJI, OCHAI			
09:08		45-72	V 27	GOOD! FT by SMALL, KENDALL
08:55	GOOD! 3PTR by BRAUN, CHRISTIAN	45-75	V 30	
08:55	ASSIST by DOTSON, DEVON			
08:37				TURNOVER (BADPASS) by SMALL, KENDALL
08:37	SUB OUT: MCCORMACK, DAVID			
08:37	SUB IN: AZUBUIKE, UDOKA			
08:26				MISSED 3PTR by DONLEY, ELIET
08:22	REBOUND (DEF) by AGBAJI, OCHAI			
08:10	MISSED 3PTR by AGBAJI, OCHAI			
08:07				REBOUND (DEF) by SMALL, KENDALL

Time	VISITORS: Kansas	Score	Margin	HOME: Chaminade
08:05	FOUL (PERSONAL) by DOTSON, DEVON			
08:05				MISSED FT by SMALL, KENDALL
08:05				REBOUND (OFF) by TEAM
08:05		46-75	V 29	GOOD! FT by SMALL, KENDALL [FB]
08:05				SUB OUT: SMALL, KENDALL
08:05				SUB IN: CARTAINO, TYLER
07:48	GOOD! LAYUP by BRAUN, CHRISTIAN	46-77	V 31	
07:48				FOUL (PERSONAL) by DONLEY, ELIET
07:48				
07:48	MISSED FT by BRAUN, CHRISTIAN			
07:48	REBOUND (OFF) by TEAM			
07:34	MISSED LAYUP by AZUBUIKE, UDOKA			
07:33	REBOUND (OFF) by TEAM			
07:24	GOOD! LAYUP by DOTSON, DEVON [PNT]	46-79	V 33	
07:08				MISSED 3PTR by TAKAPU, MORNINGSTAR
07:04	REBOUND (DEF) by DOTSON, DEVON			
07:02	MISSED JUMPER by DOTSON, DEVON			
06:58	REBOUND (OFF) by AZUBUIKE, UDOKA			
06:56	GOOD! LAYUP by AZUBUIKE, UDOKA	46-81	V 35	
06:48				TURNOVER (BADPASS) by CARTAINO, TYLER
06:48	STEAL by BRAUN, CHRISTIAN			
06:43	TURNOVER (BADPASS) by BRAUN, CHRISTIAN			
06:43				STEAL by CARTAINO, TYLER
06:38				TURNOVER (TRAVEL) by CARTAINO, TYLER
06:38				SUB OUT: YOUNG, ROMAN
06:38				SUB OUT: TAKAPU, MORNINGSTAR
06:38				SUB OUT: AMARAL-ARTHAREE, ISAAC
06:38				SUB IN: ARISSOL, ANDRE
06:38				SUB IN: AWET, BILL
06:38				SUB IN: SMALL, KENDALL
06:38	SUB OUT: AGBAJI, OCHAI			
06:38	SUB IN: DESOUSA, SILVIO			
06:32	TURNOVER (BADPASS) by AZUBUIKE, UDOKA			
06:32				STEAL by SMALL, KENDALL
06:21		48-81	V 33	GOOD! LAYUP by DONLEY, ELIET
06:21				ASSIST by AWET, BILL
06:01	TURNOVER (TRAVEL) by AZUBUIKE, UDOKA			
05:44				MISSED 3PTR by ARISSOL, ANDRE
05:40				REBOUND (OFF) by DONLEY, ELIET
05:39				MISSED 3PTR by CARTAINO, TYLER
05:35				REBOUND (OFF) by AWET, BILL
05:33				MISSED 3PTR by ARISSOL, ANDRE
05:30	REBOUND (DEF) by TEAM			
05:16	MISSED 3PTR by BRAUN, CHRISTIAN			
05:12	REBOUND (OFF) by AZUBUIKE, UDOKA			
05:10	GOOD! DUNK by AZUBUIKE, UDOKA	48-83	V 35	
04:59		50-83	V 33	GOOD! LAYUP by DONLEY, ELIET
04:59				ASSIST by SMALL, KENDALL
04:42	MISSED 3PTR by DESOUSA, SILVIO			
04:30	REBOUND (OFF) by AZUBUIKE, UDOKA			
04:29	GOOD! DUNK by AZUBUIKE, UDOKA	50-85	V 35	
04:22		53-85	V 32	GOOD! 3PTR by ARISSOL, ANDRE
04:22				ASSIST by SMALL, KENDALL
04:06	MISSED 3PTR by BRAUN, CHRISTIAN			
04:03	REBOUND (OFF) by DOTSON, DEVON			
04:00				FOUL (PERSONAL) by AWET, BILL
04:00				
01:17				FOUL (PERSONAL) by DONLEY, ELIET
04:00				SUB OUT: DONLEY, ELIET
04:00				SUB OUT: AWET, BILL
04:00				SUB IN: KREMER, KEVIN
04:00				SUB IN: AMARAL-ARTHAREE, ISAAC
04:00	SUB OUT: DOTSON, DEVON			
04:00	SUB OUT: DESOUSA, SILVIO			
04:00	SUB OUT: AZUBUIKE, UDOKA			
04:00	SUB IN: GARRETT, MARCUS			
04:00	SUB IN: TEAHAN, CHRIS			
04:00	SUB IN: MCCORMACK, DAVID			
04:00	MISSED FT by ENARUNA, TRISTAN			
04:00	REBOUND (OFF) by BRAUN, CHRISTIAN			
04:00	GOOD! LAYUP by BRAUN, CHRISTIAN	53-87	V 34	
03:39	SUB OUT: GARRETT, MARCUS			
03:39	SUB OUT: BRAUN, CHRISTIAN			
03:39	SUB IN: ELLIOTT, ELIJAH			
03:39	SUB IN: JANKOVICH, MICHAEL			
03:34		55-87	V 32	GOOD! JUMPER by CARTAINO, TYLER
03:10	TURNOVER (BADPASS) by ENARUNA, TRISTAN			
03:10				STEAL by AMARAL-ARTHAREE, ISAAC
03:04		58-87	V 29	GOOD! 3PTR by ARISSOL, ANDRE [FB]
03:04				ASSIST by CARTAINO, TYLER

Time	VISITORS: Kansas	Score	Margin	HOME: Chaminade
02:47	GOOD! 3PTR by ENARUNA, TRISTAN	58-90	V 32	
02:47	ASSIST by ELLIOTT, ELIJAH			
02:34				TURNOVER (BADPASS) by SMALL, KENDALL
02:33				SUB OUT: CARTAINO, TYLER
02:33				SUB IN: YOUNG, ROMAN
02:18				SUB OUT: ARISSOL, ANDRE
02:18				SUB IN: YOUNG, KOBE
02:11	TURNOVER (BADPASS) by ELLIOTT, ELIJAH			
01:57		61-90	V 29	GOOD! 3PTR by AMARAL-ARTHAREE, ISAAC
01:57				ASSIST by KREMER, KEVIN
01:42	TURNOVER (BADPASS) by JANKOVICH, MICHAEL			
01:38		63-90	V 27	GOOD! LAYUP by YOUNG, KOBE [FB/PNT]
01:38				ASSIST by SMALL, KENDALL
01:38	FOUL (PERSONAL) by TEAHAN, CHRIS			
01:38				SUB OUT: SMALL, KENDALL
01:38				SUB IN: TAKAPU, MORNINGSTAR
01:38	SUB OUT: ENARUNA, TRISTAN			
01:38	SUB IN: BRAUN, CHRISTIAN			
01:38				MISSED FT by YOUNG, KOBE
01:38	REBOUND (DEF) by TEAM			
01:24	MISSED LAYUP by BRAUN, CHRISTIAN			
01:21				REBOUND (DEF) by YOUNG, KOBE
01:15				MISSED 3PTR by AMARAL-ARTHAREE, ISAAC
01:11	REBOUND (DEF) by BRAUN, CHRISTIAN			
00:56	MISSED 3PTR by TEAHAN, CHRIS			
00:53				REBOUND (DEF) by AMARAL-ARTHAREE, ISAAC
00:43				TURNOVER (BADPASS) by TAKAPU, MORNINGSTAR
00:43	STEAL by JANKOVICH, MICHAEL			
00:26	GOOD! 3PTR by ELLIOTT, ELIJAH	63-93	V 30	
00:26	ASSIST by JANKOVICH, MICHAEL			
00:16				MISSED 3PTR by AMARAL-ARTHAREE, ISAAC
00:12	REBOUND (DEF) by TEAM			

Kansas 93, Chaminade 63

Points from (This Period)	KAN	CHM
In the Paint	30	10
Off Turns	12	10
2nd Chance	12	5
Fast Break	2	6
Bench	20	7

Official Scoring/Possession Reference Chart
Kansas vs Chaminade
Period 1
November 25, 2019 at Lahaina Civic Center - Lahaina



Period 1

Starters:

Kansas: 00 GARRETT, MARCUS (G); 1 DOTSON, DEVON (G); 30 AGBAJI, OCHAI (G); 33 MCCORMACK, DAVID (F); 35 AZUBUIKE, UDOKA (C);
Chaminade: 10 ARISSOL, ANDRE (G); 13 CARTAINO, TYLER (G); 25 SMALL, KENDALL (G); 3 DONLEY, ELIET (F); 5 DAVENPORT, TELLY (G);

Time	VISITORS: Kansas	Score	Margin	HOME: Chaminade
19:28		2-0	H 2	GOOD! JUMPER by CARTAINO, TYLER
18:48		5-0	H 5	GOOD! 3PTR by ARISSOL, ANDRE
18:15	GOOD! FT by GARRETT, MARCUS	5-1	H 4	
17:29	GOOD! LAYUP by DOTSON, DEVON [FB]	5-3	H 2	
16:54		7-3	H 4	GOOD! LAYUP by DAVENPORT, TELLY [FB]
16:04	GOOD! LAYUP by GARRETT, MARCUS [PNT]	7-5	H 2	
15:06	GOOD! LAYUP by GARRETT, MARCUS	7-7	T	
14:29	GOOD! 3PTR by AGBAJI, OCHAI [FB]	7-10	V 3	
13:51	GOOD! 3PTR by MOSS, ISAIAH	7-13	V 6	
13:20	GOOD! LAYUP by DOTSON, DEVON	7-15	V 8	
12:07	GOOD! 3PTR by DOTSON, DEVON	7-18	V 11	
11:36	GOOD! JUMPER by MCCORMACK, DAVID	7-20	V 13	
11:19		9-20	V 11	GOOD! LAYUP by CARTAINO, TYLER
11:19		10-20	V 10	GOOD! FT by CARTAINO, TYLER
10:03	GOOD! LAYUP by DOTSON, DEVON [FB]	10-22	V 12	
09:09	GOOD! LAYUP by DESOUSA, SILVIO	10-24	V 14	
08:39	GOOD! 3PTR by DOTSON, DEVON	10-27	V 17	
08:18		12-27	V 15	GOOD! LAYUP by AWET, BILL
07:54		13-27	V 14	GOOD! FT by ARISSOL, ANDRE
07:54		14-27	V 13	GOOD! FT by ARISSOL, ANDRE
07:10		17-27	V 10	GOOD! 3PTR by CARTAINO, TYLER
06:49	GOOD! 3PTR by MOSS, ISAIAH	17-30	V 13	
06:35		19-30	V 11	GOOD! LAYUP by CARTAINO, TYLER
05:24	GOOD! FT by GARRETT, MARCUS	19-31	V 12	
05:05	GOOD! DUNK by AGBAJI, OCHAI [FB]	19-33	V 14	
04:44		20-33	V 13	GOOD! FT by YOUNG, ROMAN
04:20	GOOD! LAYUP by MCCORMACK, DAVID	20-35	V 15	
02:42		22-35	V 13	GOOD! JUMPER by ARISSOL, ANDRE
02:30	GOOD! 3PTR by AGBAJI, OCHAI	22-38	V 16	
01:54	GOOD! 3PTR by AGBAJI, OCHAI	22-41	V 19	
01:46		23-41	V 18	GOOD! FT by SMALL, KENDALL [FB]
01:32	GOOD! LAYUP by DESOUSA, SILVIO	23-43	V 20	
01:24		25-43	V 18	GOOD! LAYUP by ARISSOL, ANDRE [FB]
01:03	GOOD! LAYUP by GARRETT, MARCUS [FB]	25-45	V 20	
00:21		27-45	V 18	GOOD! LAYUP by SMALL, KENDALL
00:05	GOOD! FT by DOTSON, DEVON	27-46	V 19	
00:05	GOOD! FT by DOTSON, DEVON	27-47	V 20	

Kansas 47, Chaminade 27

Official Scoring/Possession Reference Chart
Kansas vs Chaminade
Period 2
November 25, 2019 at Lahaina Civic Center - Lahaina



Period 2

Starters:

Kansas: 00 GARRETT, MARCUS (G); 1 DOTSON, DEVON (G); 30 AGBAJI, OCHAI (G); 33 MCCORMACK, DAVID (F); 35 AZUBUIKE, UDOKA (C);
Chaminade: 10 ARISSOL, ANDRE (G); 13 CARTAINO, TYLER (G); 25 SMALL, KENDALL (G); 3 DONLEY, ELIET (F); 5 DAVENPORT, TELLY (G);

Time	VISITORS: Kansas	Score	Margin	HOME: Chaminade
19:32		29-47	V 18	GOOD! LAYUP by SMALL, KENDALL
19:21	GOOD! FT by AZUBUIKE, UDOKA	29-48	V 19	
18:40	GOOD! 3PTR by DOTSON, DEVON	29-51	V 22	
17:53		31-51	V 20	GOOD! JUMPER by SMALL, KENDALL
17:11	GOOD! DUNK by AZUBUIKE, UDOKA	31-53	V 22	
16:42	GOOD! LAYUP by MOSS, ISAIAH	31-55	V 24	
16:30		33-55	V 22	GOOD! LAYUP by CARTAINO, TYLER
16:13	GOOD! LAYUP by AZUBUIKE, UDOKA	33-57	V 24	
15:52	GOOD! LAYUP by MOSS, ISAIAH [FB]	33-59	V 26	
15:15	GOOD! DUNK by AZUBUIKE, UDOKA	33-61	V 28	
14:02		36-61	V 25	GOOD! 3PTR by CARTAINO, TYLER
13:44	GOOD! LAYUP by AZUBUIKE, UDOKA [PNT]	36-63	V 27	
13:06		37-63	V 26	GOOD! FT by AMARAL-ARTHAREE, ISAAC
13:06		38-63	V 25	GOOD! FT by AMARAL-ARTHAREE, ISAAC
12:29		40-63	V 23	GOOD! JUMPER by DONLEY, ELIET
12:00	GOOD! 3PTR by MOSS, ISAIAH	40-66	V 26	
11:14	GOOD! DUNK by MCCORMACK, DAVID	40-68	V 28	
10:59	GOOD! JUMPER by MCCORMACK, DAVID [PNT]	40-70	V 30	
10:43		43-70	V 27	GOOD! 3PTR by ARISSOL, ANDRE
09:22	GOOD! LAYUP by MCCORMACK, DAVID [PNT]	43-72	V 29	
09:08		44-72	V 28	GOOD! FT by SMALL, KENDALL
09:08		45-72	V 27	GOOD! FT by SMALL, KENDALL
08:55	GOOD! 3PTR by BRAUN, CHRISTIAN	45-75	V 30	
08:05		46-75	V 29	GOOD! FT by SMALL, KENDALL [FB]
07:48	GOOD! LAYUP by BRAUN, CHRISTIAN	46-77	V 31	
07:24	GOOD! LAYUP by DOTSON, DEVON [PNT]	46-79	V 33	
06:56	GOOD! LAYUP by AZUBUIKE, UDOKA	46-81	V 35	
06:21		48-81	V 33	GOOD! LAYUP by DONLEY, ELIET
05:10	GOOD! DUNK by AZUBUIKE, UDOKA	48-83	V 35	
04:59		50-83	V 33	GOOD! LAYUP by DONLEY, ELIET
04:29	GOOD! DUNK by AZUBUIKE, UDOKA	50-85	V 35	
04:22		53-85	V 32	GOOD! 3PTR by ARISSOL, ANDRE
04:00	GOOD! LAYUP by BRAUN, CHRISTIAN	53-87	V 34	
03:34		55-87	V 32	GOOD! JUMPER by CARTAINO, TYLER
03:04		58-87	V 29	GOOD! 3PTR by ARISSOL, ANDRE [FB]
02:47	GOOD! 3PTR by ENARUNA, TRISTAN	58-90	V 32	
01:57		61-90	V 29	GOOD! 3PTR by AMARAL-ARTHAREE, ISAAC
01:38		63-90	V 27	GOOD! LAYUP by YOUNG, KOBE [FB/PNT]
00:26	GOOD! 3PTR by ELLIOTT, ELIJAH	63-93	V 30	

Kansas 93, Chaminade 63

Official Substitutions Log
Kansas vs Chaminade
Period 1
November 25, 2019 at Lahaina Civic Center - Lahaina



VISITORS: Kansas	Time	Score	HOME: Chaminade
00 GARRETT, MARCUS			10 ARISSOL, ANDRE
1 DOTSON, DEVON			13 CARTAINO, TYLER
30 AGBAJI, OCHAI			25 SMALL, KENDALL
33 MCCORMACK, DAVID			3 DONLEY, ELIET
35 AZUBUIKE, UDOKA			5 DAVENPORT, TELLY
SUB OUT: 33 MCCORMACK, DAVID	18:30	0-5	
SUB IN: 22 DESOUSA, SILVIO	18:30		
	16:19	3-7	SUB OUT: DONLEY, ELIET
	16:19		SUB OUT: ARISSOL, ANDRE
	16:19		SUB OUT: SMALL, KENDALL
	16:19		SUB IN: YOUNG, ROMAN
	16:19		SUB IN: KREMER, KEVIN
	16:19		SUB IN: AMARAL-ARTHAREE, ISAAC
SUB OUT: 22 DESOUSA, SILVIO	16:19		
SUB IN: 4 MOSS, ISIAAH	16:19		
	14:46	7-7	SUB OUT: DAVENPORT, TELLY
	14:46		SUB OUT: CARTAINO, TYLER
	14:46		SUB IN: ARISSOL, ANDRE
	14:46		SUB IN: SMALL, KENDALL
	14:28	10-7	SUB OUT: KREMER, KEVIN
	14:28		SUB IN: DONLEY, ELIET
	12:52	15-7	SUB OUT: YOUNG, ROMAN
	12:52		SUB OUT: AMARAL-ARTHAREE, ISAAC
	12:52		SUB IN: DAVENPORT, TELLY
	12:52		SUB IN: CARTAINO, TYLER
SUB OUT: 30 AGBAJI, OCHAI	12:52		
SUB OUT: 35 AZUBUIKE, UDOKA	12:52		
SUB IN: 13 ENARUNA, TRISTAN	12:52		
SUB IN: 33 MCCORMACK, DAVID	12:52		
SUB OUT: 1 DOTSON, DEVON	11:56	18-7	
SUB IN: 2 BRAUN, CHRISTIAN	11:56		
SUB OUT: 00 GARRETT, MARCUS	10:52	20-10	
SUB IN: 1 DOTSON, DEVON	10:52		
	09:47	22-10	SUB OUT: DONLEY, ELIET
	09:47		SUB OUT: ARISSOL, ANDRE
	09:47		SUB OUT: CARTAINO, TYLER
	09:47		SUB IN: YOUNG, ROMAN
	09:47		SUB IN: AWET, BILL
	09:47		SUB IN: KREMER, KEVIN
SUB OUT: 13 ENARUNA, TRISTAN	09:47		
SUB OUT: 33 MCCORMACK, DAVID	09:47		
SUB IN: 22 DESOUSA, SILVIO	09:47		
SUB IN: 30 AGBAJI, OCHAI	09:47		
SUB OUT: 2 BRAUN, CHRISTIAN	09:34	22-10	
SUB IN: 00 GARRETT, MARCUS	09:34		
	09:25	22-10	SUB OUT: SMALL, KENDALL
	09:25		SUB IN: ARISSOL, ANDRE
	08:11	27-12	SUB OUT: DAVENPORT, TELLY
	08:11		SUB OUT: AWET, BILL
	08:11		SUB IN: DONLEY, ELIET
	08:11		SUB IN: CARTAINO, TYLER
	07:54	27-12	SUB OUT: YOUNG, ROMAN
	07:54		SUB IN: SMALL, KENDALL
SUB OUT: 4 MOSS, ISIAAH	07:54		
SUB IN: 2 BRAUN, CHRISTIAN	07:54		
SUB OUT: 2 BRAUN, CHRISTIAN	07:07	27-17	
SUB OUT: 22 DESOUSA, SILVIO	07:07		
SUB IN: 4 MOSS, ISIAAH	07:07		
SUB IN: 33 MCCORMACK, DAVID	07:07		
	05:53	30-19	SUB OUT: DONLEY, ELIET
	05:53		SUB OUT: KREMER, KEVIN
	05:53		SUB OUT: SMALL, KENDALL
	05:53		SUB IN: YOUNG, ROMAN
	05:53		SUB IN: DAVENPORT, TELLY
	05:53		SUB IN: AWET, BILL
	05:44	30-19	SUB OUT: ARISSOL, ANDRE
	05:44		SUB IN: AMARAL-ARTHAREE, ISAAC
SUB OUT: 4 MOSS, ISIAAH	04:44	33-19	
SUB IN: 13 ENARUNA, TRISTAN	04:44		
	03:59	35-20	SUB OUT: CARTAINO, TYLER
	03:59		SUB IN: SMALL, KENDALL
	03:02	35-20	SUB OUT: DAVENPORT, TELLY
	03:02		SUB OUT: AWET, BILL
	03:02		SUB OUT: AMARAL-ARTHAREE, ISAAC
	03:02		SUB IN: DONLEY, ELIET

VISITORS: Kansas	Time	Score	HOME: Chaminade
	03:02		SUB IN: ARISSOL, ANDRE
	03:02		SUB IN: CARTAINO, TYLER
SUB OUT: 33 MCCORMACK, DAVID	03:02		
SUB IN: 22 DESOUSA, SILVIO	03:02		
	02:10	38-22	SUB OUT: YOUNG, ROMAN
	02:10		SUB IN: KREMER, KEVIN
	01:17	43-25	SUB OUT: CARTAINO, TYLER
	01:17		SUB IN: DAVENPORT, TELLY
	00:05	45-27	SUB OUT: ARISSOL, ANDRE
	00:05		SUB IN: CARTAINO, TYLER
	00:05		SUB OUT: DAVENPORT, TELLY
	00:05		SUB IN: YOUNG, ROMAN
SUB OUT: 1 DOTSON, DEVON	00:05		
SUB IN: 2 BRAUN, CHRISTIAN	00:05		

Kansas 47, Chaminade 27

Official Substitutions Log
Kansas vs Chaminade
Period 2
November 25, 2019 at Lahaina Civic Center - Lahaina



VISITORS: Kansas	Time	Score	HOME: Chaminade
00 GARRETT, MARCUS			10 ARISSOL, ANDRE
1 DOTSON, DEVON			13 CARTAINO, TYLER
30 AGBAJI, OCHAI			25 SMALL, KENDALL
33 MCCORMACK, DAVID			3 DONLEY, ELIET
35 AZUBUIKE, UDOKA			5 DAVENPORT, TELLY
	20:00	-	SUB OUT: YOUNG, ROMAN
	20:00		SUB OUT: KREMER, KEVIN
	20:00		SUB IN: DAVENPORT, TELLY
	20:00		SUB IN: ARISSOL, ANDRE
SUB OUT: 2 BRAUN, CHRISTIAN	20:00		
SUB OUT: 13 ENARUNA, TRISTAN	20:00		
SUB OUT: 22 DESOUSA, SILVIO	20:00		
SUB IN: 1 DOTSON, DEVON	20:00		
SUB IN: 4 MOSS, ISAIAH	20:00		
SUB IN: 35 AZUBUIKE, UDOKA	20:00		
	18:54	48-29	SUB OUT: ARISSOL, ANDRE
	18:54		SUB IN: YOUNG, ROMAN
	18:09	51-29	SUB OUT: DAVENPORT, TELLY
	18:09		SUB IN: KREMER, KEVIN
	16:51	53-31	SUB OUT: DONLEY, ELIET
	16:51		SUB IN: AWET, BILL
	15:51	59-33	SUB OUT: SMALL, KENDALL
	15:51		SUB IN: AMARAL-ARTHAREE, ISAAC
	15:07	61-33	SUB OUT: AWET, BILL
	15:07		SUB OUT: KREMER, KEVIN
	15:07		SUB IN: DONLEY, ELIET
	15:07		SUB IN: SMALL, KENDALL
SUB OUT: 00 GARRETT, MARCUS	15:07		
SUB OUT: 4 MOSS, ISAIAH	15:07		
SUB IN: 2 BRAUN, CHRISTIAN	15:07		
SUB IN: 13 ENARUNA, TRISTAN	15:07		
	13:06	63-37	SUB OUT: YOUNG, ROMAN
	13:06		SUB IN: ARISSOL, ANDRE
SUB OUT: 1 DOTSON, DEVON	13:06		
SUB OUT: 30 AGBAJI, OCHAI	13:06		
SUB OUT: 35 AZUBUIKE, UDOKA	13:06		
SUB IN: 00 GARRETT, MARCUS	13:06		
SUB IN: 4 MOSS, ISAIAH	13:06		
SUB IN: 33 MCCORMACK, DAVID	13:06		
	13:06		SUB OUT: AMARAL-ARTHAREE, ISAAC
	13:06		SUB IN: KREMER, KEVIN
	11:44	66-40	SUB OUT: DONLEY, ELIET
	11:44		SUB IN: AWET, BILL
	09:58	70-43	SUB OUT: KREMER, KEVIN
	09:58		SUB IN: YOUNG, ROMAN
	09:08	72-44	SUB OUT: ARISSOL, ANDRE
	09:08		SUB OUT: AWET, BILL
	09:08		SUB OUT: CARTAINO, TYLER
	09:08		SUB IN: DONLEY, ELIET
	09:08		SUB IN: TAKAPU, MORNINGSTAR
	09:08		SUB IN: AMARAL-ARTHAREE, ISAAC
SUB OUT: 00 GARRETT, MARCUS	09:08		
SUB OUT: 4 MOSS, ISAIAH	09:08		
SUB IN: 1 DOTSON, DEVON	09:08		
SUB IN: 30 AGBAJI, OCHAI	09:08		
SUB OUT: 33 MCCORMACK, DAVID	08:37	75-45	
SUB IN: 35 AZUBUIKE, UDOKA	08:37		
	08:05	75-46	SUB OUT: SMALL, KENDALL
	08:05		SUB IN: CARTAINO, TYLER
	06:38	81-46	SUB OUT: YOUNG, ROMAN
	06:38		SUB OUT: TAKAPU, MORNINGSTAR
	06:38		SUB OUT: AMARAL-ARTHAREE, ISAAC
	06:38		SUB IN: ARISSOL, ANDRE
	06:38		SUB IN: AWET, BILL
	06:38		SUB IN: SMALL, KENDALL
SUB OUT: 30 AGBAJI, OCHAI	06:38		
SUB IN: 22 DESOUSA, SILVIO	06:38		
	04:00	85-53	SUB OUT: DONLEY, ELIET
	04:00		SUB OUT: AWET, BILL
	04:00		SUB IN: KREMER, KEVIN
	04:00		SUB IN: AMARAL-ARTHAREE, ISAAC
SUB OUT: 1 DOTSON, DEVON	04:00		
SUB OUT: 22 DESOUSA, SILVIO	04:00		
SUB OUT: 35 AZUBUIKE, UDOKA	04:00		
SUB IN: 00 GARRETT, MARCUS	04:00		

VISITORS: Kansas	Time	Score	HOME: Chaminade
SUB IN: 12 TEAHAN, CHRIS	04:00		
SUB IN: 33 MCCORMACK, DAVID	04:00		
SUB OUT: 00 GARRETT, MARCUS	03:39	87-53	
SUB OUT: 2 BRAUN, CHRISTIAN	03:39		
SUB IN: 5 ELLIOTT, ELIJAH	03:39		
SUB IN: 20 JANKOVICH, MICHAEL	03:39		
	02:33	90-58	SUB OUT: CARTAINO, TYLER
	02:33		SUB IN: YOUNG, ROMAN
	02:18	90-58	SUB OUT: ARISSOL, ANDRE
	02:18		SUB IN: YOUNG, KOBE
	01:38	90-63	SUB OUT: SMALL, KENDALL
	01:38		SUB IN: TAKAPU, MORNINGSTAR
SUB OUT: 13 ENARUNA, TRISTAN	01:38		
SUB IN: 2 BRAUN, CHRISTIAN	01:38		

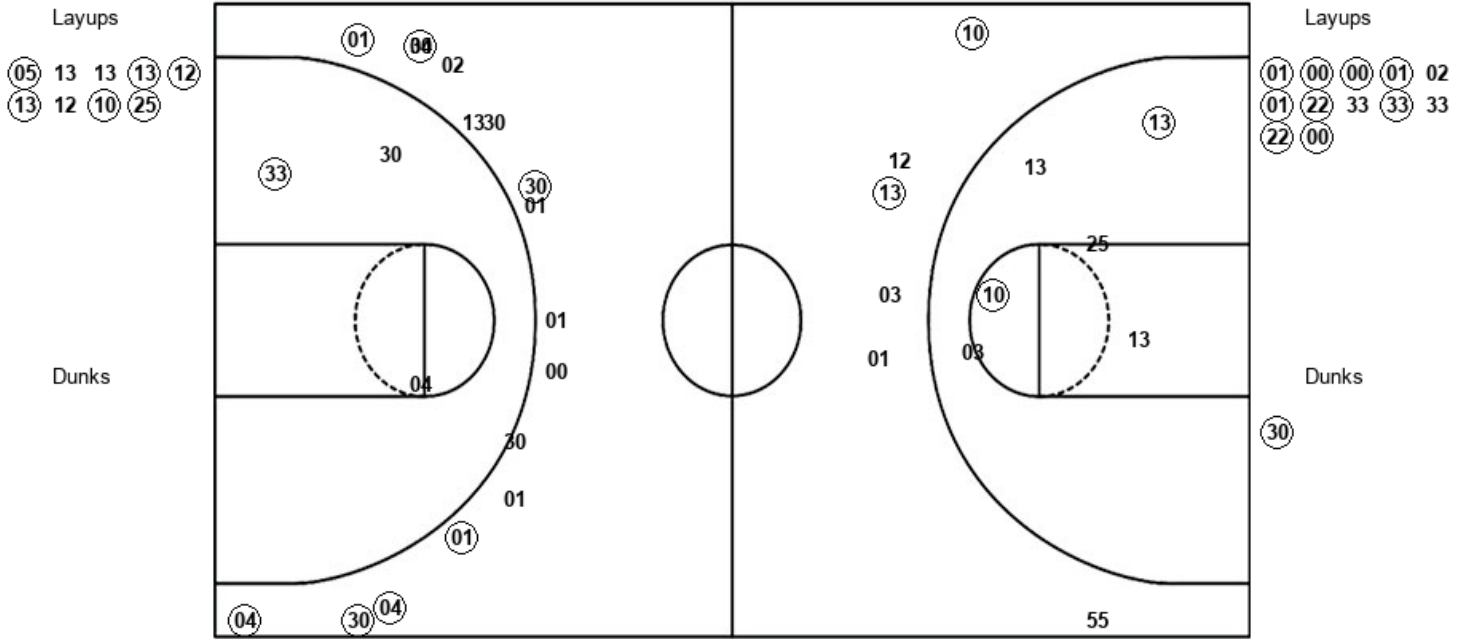
Kansas 93, Chaminade 63

Official Shot Chart
Kansas vs Chaminade
PERIOD 1 Shots
November 25, 2019 at Lahaina Civic Center - Lahaina



Chaminade

Kansas



CHM : Period 1	Made	Att	Pct
Layups	6	9	66.7
Dunks	0	0	0
2PT Field Goals	8	15	53.3
3PT Field Goals	2	6	33.3
Total Field Goals	10	21	47.6

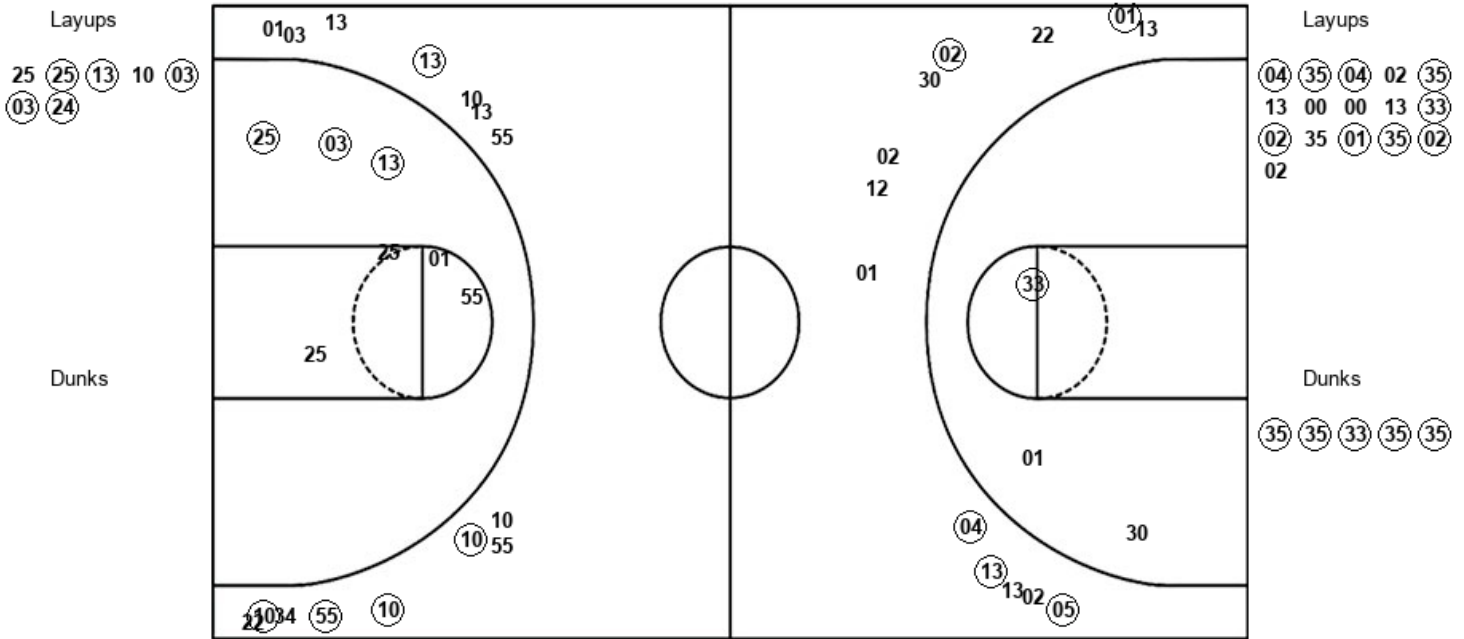
KAN : Period 1	Made	Att	Pct
Layups	9	12	75.0
Dunks	1	1	100.0
2PT Field Goals	11	16	68.8
3PT Field Goals	7	16	43.8
Total Field Goals	18	32	56.3

Official Shot Chart
Kansas vs Chaminade
PERIOD 2 Shots
November 25, 2019 at Lahaina Civic Center - Lahaina



Chaminade

Kansas



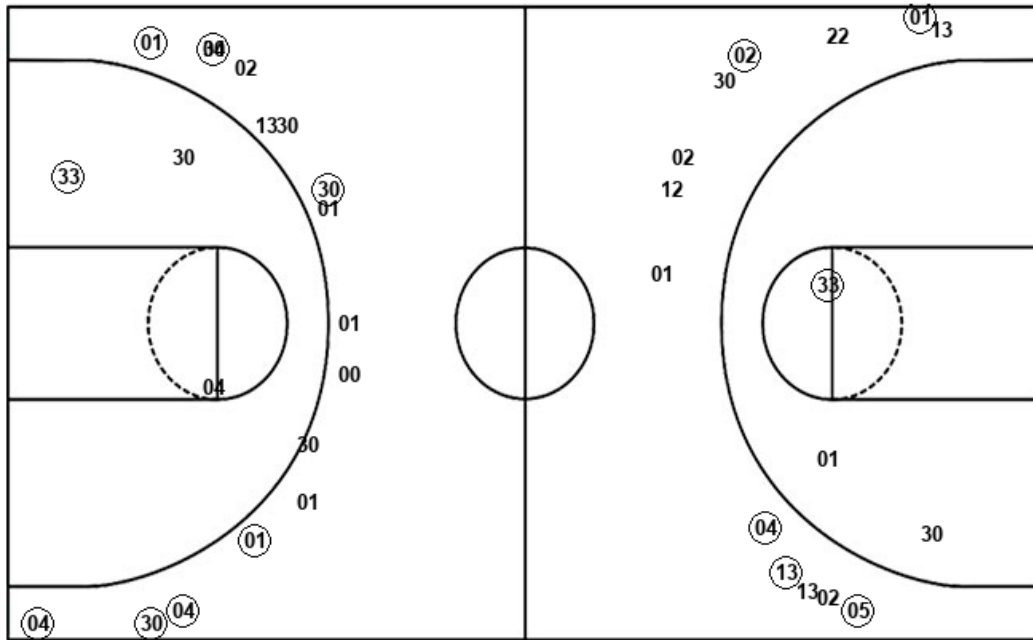
CHM : Period 2	Made	Att	Pct
Layups	5	7	71.4
Dunks	0	0	0
2PT Field Goals	8	14	57.1
3PT Field Goals	5	15	33.3
Total Field Goals	13	29	44.8

KAN : Period 2	Made	Att	Pct
Layups	9	16	56.3
Dunks	5	5	100.0
2PT Field Goals	15	24	62.5
3PT Field Goals	5	13	38.5
Total Field Goals	20	37	54.1

Official Shot Chart
Kansas vs Chaminade
Kansas Team Shots
November 25, 2019 at Lahaina Civic Center - Lahaina



Layups



Layups

(01) (00) (00) (01) 02
 (01) (22) 33 (33) 33
 (22) (00) (04) (35) (04)
 02 (35) 13 00 00
 13 (33) (02) 35 (01)
 (35) (02) 02

Dunks

Dunks

(30) (35) (35) (33) (35)
 (35)

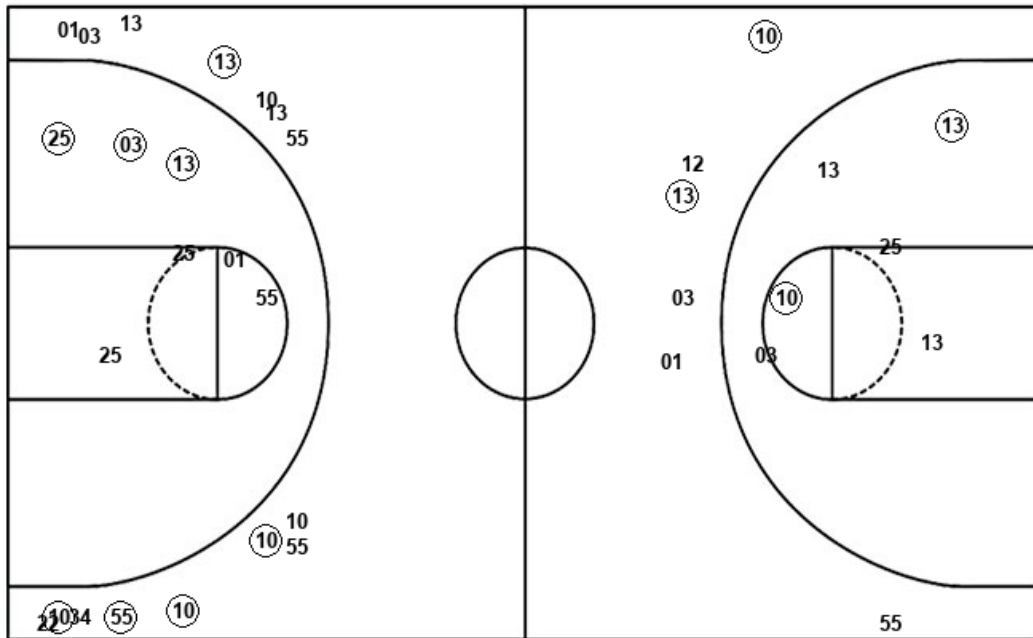
KAN : Period 1	Made	Att	Pct
Layups	9	12	75.0
Dunks	1	1	100.0
2PT Field Goals	11	16	68.8
3PT Field Goals	7	16	43.8
Total Field Goals	18	32	56.3

KAN : Period 2	Made	Att	Pct
Layups	9	16	56.3
Dunks	5	5	100.0
2PT Field Goals	15	24	62.5
3PT Field Goals	5	13	38.5
Total Field Goals	20	37	54.1

Official Shot Chart
Kansas vs Chaminade
Chaminade Team Shots
November 25, 2019 at Lahaina Civic Center - Lahaina



Layups



Layups

- (05) 13 13 (13) (12)
- (13) 12 (10) (25) 25
- (25) (13) 10 (03) (03)
- (24)

Dunks

Dunks

CHM : Period 1	Made	Att	Pct
Layups	6	9	66.7
Dunks	0	0	0
2PT Field Goals	8	15	53.3
3PT Field Goals	2	6	33.3
Total Field Goals	10	21	47.6

CHM : Period 2	Made	Att	Pct
Layups	5	7	71.4
Dunks	0	0	0
2PT Field Goals	8	14	57.1
3PT Field Goals	5	15	33.3
Total Field Goals	13	29	44.8