

FINAL SCORE



Kansas

65



Oklahoma St.

50

January 27, 2020 • Gallagher-Iba Arena (Eddie Sutton Court) - Stillwater

FINAL STATISTICS

Official Box Score
Kansas vs Oklahoma St.
Game Totals -- Final Statistics
January 27, 2020 at Gallagher-Iba Arena (Eddie Sutton Court) - Stillwater



Kansas 65

No.	Player	S	Pts	FG	3FG	FT	OR	DR	TR	PF	A	TO	Blk	Stl	Min	+/-
00	GARRETT, MARCUS	G	7	2-6	0-2	3-4	0	8	8	1	9	2	0	0	34	24
01	DOTSON, DEVON	G	11	4-8	1-4	2-3	0	2	2	3	3	1	0	0	25	-8
02	BRAUN, CHRISTIAN	G	16	5-11	4-8	2-2	3	6	9	3	0	2	1	2	33	13
30	AGBAJI, OCHAI	G	9	2-9	2-7	3-4	1	3	4	2	2	1	1	0	35	14
35	AZUBUIKE, UDOKA	C	6	3-4	0-0	0-0	2	5	7	2	0	3	5	1	28	19
04	MOSS, ISAIAH	G	13	4-9	3-8	2-2	1	0	1	2	1	1	0	0	25	20
05	ELLIOTT, ELIJAH	G	0	0-0	0-0	0-0	0	0	0	0	0	0	0	0	1	-2
12	TEAHAN, CHRIS	G	0	0-1	0-1	0-0	0	0	0	0	0	0	0	0	1	-2
13	ENAROVA, TRISTAN	F	3	1-6	1-3	0-0	1	4	5	2	0	0	1	0	15	-3
20	JANKOVICH, MICHAEL	G	0	0-0	0-0	0-0	0	0	0	0	0	0	0	0	2	0
TEAM							1	3	4	0						
TOTALS			65	21-54	11-33	12-15	9	31	40	15	15	10	8	3	198	

Shooting By Period

Period	FG	FG%	3FG	3FG%	FT	FT%
1st Half	10-29	34%	6-19	32%	3-4	75%
2nd Half	11-25	44%	5-14	36%	9-11	82%
Game	21-54	38.9%	11-33	33.3%	12-15	80.0%

Deadball Rebounds: 2,0
Last FG: 2nd-04:39
Biggest Run: 13-0
Largest lead: By 27 at 2nd-04:39
Technical Fouls: None.

Oklahoma St. 50

No.	Player	S	Pts	FG	3FG	FT	OR	DR	TR	PF	A	TO	Blk	Stl	Min	+/-
00	ANDERSON, III, AVERY	G	2	1-5	0-1	0-0	1	0	1	1	0	1	1	0	14	-1
12	MCGRIFF, CAMERON	F	18	6-14	1-5	5-8	3	5	8	3	1	1	0	0	35	-1
13	LIKEKELE, ISAAC	G	10	4-11	0-1	2-2	2	2	4	0	2	0	0	2	33	-9
21	WATERS, III, LINDY	G	5	2-9	0-2	1-2	1	3	4	3	3	0	0	0	32	-25
22	BOONE, KALIB	F	4	1-2	0-0	2-2	3	5	8	1	0	0	1	1	12	7
01	LAURENT, JONATHAN	G	2	1-6	0-2	0-0	2	1	3	0	1	0	0	0	14	-21
02	HARRIS JR., CHRIS	G	5	2-6	1-3	0-0	0	3	3	2	0	0	0	1	19	-4
04	DZIAGWA, THOMAS	G	0	0-3	0-3	0-0	0	0	0	1	1	1	0	0	13	-22
14	ANEI, YOR	F	4	1-6	0-0	2-2	1	3	4	1	1	2	1	1	17	-9
20	BOONE, KEYLAN	G	0	0-2	0-1	0-0	1	1	2	2	0	1	0	1	11	10
TEAM							2	2	4	0						
TOTALS			50	18-64	2-18	12-16	16	25	41	14	9	7	3	6	198	

Shooting By Period

Period	FG	FG%	3FG	3FG%	FT	FT%
1st Half	8-30	27%	2-12	17%	6-8	75%
2nd Half	10-34	29%	0-6	00%	6-8	75%
Game	18-64	28.1%	2-18	11.1%	12-16	75.0%

Deadball Rebounds: 3,0
Last FG: 2nd-00:24
Biggest Run: 15-0
Largest lead: By 0 at -
Technical Fouls: None.

Game Notes:

Officials: Joe DeRosa, Rick Crawford, James Breeding

Start Time: 09:00 PM ET
 Conference Game;

Score	1st	2nd	TOT
KAN	29	36	65
OSU	24	26	50

KAN led for 39:12. OSU led for 0:00.
 Game was tied for 0:25.
 Times tied: 0 Lead Changes: 0

Points from	KAN	OSU
In the Paint	16	24
Off Turns	12	9
2nd Chance	10	8
Fast Break	16	11
Bench	16	11

Official Box Score
Kansas vs Oklahoma St.
First Half Statistics Only
January 27, 2020 at Gallagher-Iba Arena (Eddie Sutton Court) - Stillwater



Kansas 29

No.	Player	S	Pts	FG	3FG	FT	OR	DR	TR	PF	A	TO	Blk	Stl	Min	+/-
00	GARRETT, MARCUS	G	3	1-4	0-2	1-2	0	8	8	0	5	2	0	0	18	8
01	DOTSON, DEVON	G	7	3-6	1-4	0-0	0	1	1	2	1	0	0	0	14	-4
02	BRAUN, CHRISTIAN	G	8	3-7	2-5	0-0	2	1	3	0	0	1	0	1	16	7
30	AGBAJI, OCHAI	G	5	1-6	1-4	2-2	1	1	2	2	1	1	1	0	18	4
35	AZUBUIKE, UDOKA	C	0	0-0	0-0	0-0	1	2	3	2	0	1	2	0	12	-1
04	MOSS, ISAIAH	G	3	1-3	1-3	0-0	1	0	1	1	0	1	0	0	11	2
05	ELLIOTT, ELIJAH	G	0	0-0	0-0	0-0	0	0	0	0	0	0	0	0	0	0
12	TEAHAN, CHRIS	G	0	0-0	0-0	0-0	0	0	0	0	0	0	0	0	0	0
13	ENARUNA, TRISTAN	F	3	1-3	1-1	0-0	1	2	3	2	0	0	0	0	11	7
20	JANKOVICH, MICHAEL	G	0	0-0	0-0	0-0	0	0	0	0	0	0	0	0	1	2
TEAM							0	1	1	0		0				
TOTALS			29	10-29	6-19	3-4	6	16	22	9	7	6	3	1	100	

Shooting By Period

Period	FG	FG%	3FG	3FG%	FT	FT%
1st Half	10-29	34%	6-19	32%	3-4	75%
Game	21-54	38.9%	11-33	33.3%	12-15	80.0%

Deadball Rebounds: 2,0
 Last FG Half: KAN 2nd-04:39

Oklahoma St. 24

No.	Player	S	Pts	FG	3FG	FT	OR	DR	TR	PF	A	TO	Blk	Stl	Min	+/-
00	ANDERSON, III, AVERY	G	2	1-3	0-0	0-0	1	0	1	0	0	1	0	0	6	-10
12	MCGRIFF, CAMERON	F	9	3-8	1-4	2-4	0	3	3	0	0	0	0	0	18	1
13	LIKEKELE, ISAAC	G	6	2-6	0-0	2-2	2	1	3	0	1	0	0	2	18	1
21	WATERS, III, LINDY	G	2	1-5	0-2	0-0	0	3	3	1	1	0	0	0	17	-10
22	BOONE, KALIB	F	0	0-0	0-0	0-0	1	0	1	1	0	0	0	0	5	-2
01	LAURENT, JONATHAN	G	0	0-1	0-1	0-0	2	1	3	0	1	0	0	0	6	-9
02	HARRIS JR., CHRIS	G	3	1-2	1-2	0-0	0	2	2	1	0	0	0	1	9	4
04	DZIAGWA, THOMAS	G	0	0-3	0-3	0-0	0	0	0	0	1	0	0	0	8	-12
14	ANEI, YOR	F	2	0-2	0-0	2-2	0	2	2	1	1	1	1	1	9	6
20	BOONE, KEYLAN	G	0	0-0	0-0	0-0	1	0	1	1	0	0	0	0	4	6
TEAM							0	1	1	0		1				
TOTALS			24	8-30	2-12	6-8	7	13	20	5	5	3	1	4	100	

Shooting By Period

Period	FG	FG%	3FG	3FG%	FT	FT%
1st Half	8-30	27%	2-12	17%	6-8	75%
Game	18-64	28.1%	2-18	11.1%	12-16	75.0%

Deadball Rebounds: 3,0
 Last FG Half: OSU 2nd-00:24

Game Notes:

Officials: Joe DeRosa, Rick Crawford, James Breeding

Start Time: 09:00 PM ET

Conference Game;

Score	1st	2nd	TOT
KAN	29	36	65
OSU	24	26	50

Points from (This Period)	KAN	OSU
In the Paint	6	10
Off Turns	5	3
2nd Chance	7	3
Fast Break	10	5
Bench	6	5

**Official Play-By-Play
Kansas vs Oklahoma St.
First Half**

January 27, 2020 at Gallagher-Iba Arena (Eddie Sutton Court) - Stillwater



Period 1

Starters:

Kansas: 00 GARRETT, MARCUS (G); 1 DOTSON, DEVON (G); 2 BRAUN, CHRISTIAN (G); 30 AGBAJI, OCHAI (G); 35 AZUBUIKE, UDOKA (C);

Oklahoma St.: 00 ANDERSON, III, AVERY (G); 12 MCGRIFF, CAMERON (F); 13 LIKEKELE, ISAAC (G); 21 WATERS, III, LINDY (G); 22 BOONE, KALIB (F);

Time	VISITORS: Kansas	Score	Margin	HOME: Oklahoma St.
19:38	MISSED 3PTR by BRAUN, CHRISTIAN			
19:35	REBOUND (OFF) by AGBAJI, OCHAI			
19:35				FOUL (PERSONAL) by BOONE, KALIB
19:35	GOOD! FT by AGBAJI, OCHAI	0-1	V 1	
19:35	GOOD! FT by AGBAJI, OCHAI	0-2	V 2	
19:15				MISSED 3PTR by WATERS, III, LINDY
19:11	REBOUND (DEF) by GARRETT, MARCUS			
19:05	MISSED 3PTR by DOTSON, DEVON			
19:01				REBOUND (DEF) by TEAM
18:40				TURNOVER (BADPASS) by ANDERSON, III, AVERY
18:40	STEAL by BRAUN, CHRISTIAN			
18:24	MISSED 3PTR by AGBAJI, OCHAI			
18:20				REBOUND (DEF) by MCGRIFF, CAMERON
17:52				MISSED 3PTR by WATERS, III, LINDY
17:52				REBOUND (OFF) by BOONE, KALIB
17:52				TURNOVER (SHOTCLOCK) by TEAM
17:27	GOOD! LAYUP by GARRETT, MARCUS	0-4	V 4	
17:27	ASSIST by DOTSON, DEVON			
17:12				MISSED JUMPER by MCGRIFF, CAMERON
17:08				REBOUND (OFF) by ANDERSON, III, AVERY
16:58				MISSED LAYUP by ANDERSON, III, AVERY
16:58	BLOCK by AGBAJI, OCHAI			
16:54	REBOUND (DEF) by GARRETT, MARCUS			
16:52	GOOD! LAYUP by DOTSON, DEVON [FB]	0-6	V 6	
16:52	ASSIST by GARRETT, MARCUS			
16:26				MISSED 3PTR by MCGRIFF, CAMERON
16:23	REBOUND (DEF) by GARRETT, MARCUS			
16:12	MISSED 3PTR by BRAUN, CHRISTIAN			
16:08	REBOUND (OFF) by AZUBUIKE, UDOKA			
15:59	MISSED 3PTR by AGBAJI, OCHAI			
15:55				REBOUND (DEF) by MCGRIFF, CAMERON
15:40		2-6	V 4	GOOD! LAYUP by ANDERSON, III, AVERY
15:40				
15:40				SUB OUT: ANDERSON, III, AVERY
15:40				SUB OUT: BOONE, KALIB
15:40				SUB IN: DZIAGWA, THOMAS
15:40				SUB IN: ANEI, YOR
15:18	GOOD! 3PTR by BRAUN, CHRISTIAN	2-9	V 7	
15:18	ASSIST by AGBAJI, OCHAI			
15:04	FOUL (PERSONAL) by AZUBUIKE, UDOKA			
14:58				MISSED 3PTR by DZIAGWA, THOMAS
14:53	REBOUND (DEF) by DOTSON, DEVON			
14:32	MISSED 3PTR by DOTSON, DEVON			
14:28				REBOUND (DEF) by ANEI, YOR
14:23				MISSED LAYUP by LIKEKELE, ISAAC
14:23	BLOCK by AZUBUIKE, UDOKA			
14:19				REBOUND (OFF) by LIKEKELE, ISAAC
14:15				MISSED 3PTR by MCGRIFF, CAMERON
14:10	REBOUND (DEF) by GARRETT, MARCUS			
13:59	TURNOVER (BADPASS) by GARRETT, MARCUS			
13:59				STEAL by ANEI, YOR
13:53				FOUL (OFF) by ANEI, YOR
13:53				TURNOVER (OFFENSIVE) by ANEI, YOR
13:53	SUB OUT: BRAUN, CHRISTIAN			
13:53	SUB OUT: AZUBUIKE, UDOKA			
13:53	SUB IN: MOSS, ISIAAH			
13:53	SUB IN: ENARUNA, TRISTAN			
13:35				FOUL (PERSONAL) by WATERS, III, LINDY
13:17	GOOD! 3PTR by DOTSON, DEVON	2-12	V 10	
13:17	ASSIST by GARRETT, MARCUS			
13:08	FOUL (PERSONAL) by DOTSON, DEVON			
12:59		4-12	V 8	GOOD! LAYUP by MCGRIFF, CAMERON
12:59				ASSIST by DZIAGWA, THOMAS
12:40	MISSED 3PTR by MOSS, ISIAAH			
12:37				REBOUND (DEF) by WATERS, III, LINDY
12:30	FOUL (PERSONAL) by ENARUNA, TRISTAN			
12:30				SUB OUT: ANEI, YOR
12:30				SUB IN: LAURENT, JONATHAN
12:30				SUB OUT: WATERS, III, LINDY
12:30				SUB IN: HARRIS JR., CHRIS

Time	VISITORS: Kansas	Score	Margin	HOME: Oklahoma St.
12:26	FOUL (PERSONAL) by DOTSON, DEVON			
12:26	SUB OUT: DOTSON, DEVON			
12:26	SUB IN: BRAUN, CHRISTIAN			
12:18				MISSED LAYUP by MCGRIFF, CAMERON
12:15				REBOUND (OFF) by LIKEKELE, ISAAC
12:15				MISSED LAYUP by LIKEKELE, ISAAC
12:14	REBOUND (DEF) by GARRETT, MARCUS			
12:00	TURNOVER (BADPASS) by GARRETT, MARCUS			
12:00				STEAL by LIKEKELE, ISAAC
11:50				MISSED 3PTR by DZIAGWA, THOMAS
11:47	REBOUND (DEF) by ENARUNA, TRISTAN			
11:44	GOOD! 3PTR by BRAUN, CHRISTIAN [FB]	4-15	V 11	
11:16				MISSED JUMPER by LIKEKELE, ISAAC
11:13				REBOUND (OFF) by LAURENT, JONATHAN
11:11		7-15	V 8	GOOD! 3PTR by HARRIS JR., CHRIS
11:11				ASSIST by LAURENT, JONATHAN
10:55	FOUL (OFF) by AGBAJI, OCHAI			
10:55	TURNOVER (OFFENSIVE) by AGBAJI, OCHAI			
10:55				
10:55				SUB OUT: MCGRIFF, CAMERON
10:55				SUB OUT: LIKEKELE, ISAAC
10:55				SUB IN: ANDERSON, III, AVERY
10:55				SUB IN: WATERS, III, LINDY
10:34				MISSED JUMPER by WATERS, III, LINDY
10:31				REBOUND (OFF) by LAURENT, JONATHAN
10:30				MISSED 3PTR by HARRIS JR., CHRIS
10:27	REBOUND (DEF) by AGBAJI, OCHAI			
10:19	TURNOVER (TRAVEL) by MOSS, ISIAIAH			
10:05				MISSED 3PTR by LAURENT, JONATHAN
10:01	REBOUND (DEF) by GARRETT, MARCUS			
09:52	MISSED LAYUP by BRAUN, CHRISTIAN			
09:50				REBOUND (DEF) by LAURENT, JONATHAN
09:36				MISSED 3PTR by DZIAGWA, THOMAS
09:33	REBOUND (DEF) by GARRETT, MARCUS			
09:28	GOOD! 3PTR by ENARUNA, TRISTAN [FB]	7-18	V 11	
09:28	ASSIST by GARRETT, MARCUS			
09:18				MISSED LAYUP by ANDERSON, III, AVERY
09:16	REBOUND (DEF) by BRAUN, CHRISTIAN			
09:07	GOOD! 3PTR by AGBAJI, OCHAI	7-21	V 14	
09:07	ASSIST by GARRETT, MARCUS			
09:07				TIMEOUT 30SEC
09:07				SUB OUT: ANDERSON, III, AVERY
09:07				SUB OUT: LAURENT, JONATHAN
09:07				SUB OUT: DZIAGWA, THOMAS
09:07				SUB IN: MCGRIFF, CAMERON
09:07				SUB IN: LIKEKELE, ISAAC
09:07				SUB IN: ANEI, YOR
09:07	SUB OUT: AGBAJI, OCHAI			
09:07	SUB IN: AZUBUIKE, UDOKA			
08:41				MISSED JUMPER by ANEI, YOR
08:41	REBOUND (DEF) by TEAM			
08:11	MISSED 3PTR by GARRETT, MARCUS			
08:07	REBOUND (OFF) by BRAUN, CHRISTIAN			
07:55	GOOD! 3PTR by MOSS, ISIAIAH	7-24	V 17	
07:55	ASSIST by GARRETT, MARCUS			
07:38		9-24	V 15	GOOD! JUMPER by WATERS, III, LINDY
07:15	MISSED JUMPER by ENARUNA, TRISTAN			
07:10	REBOUND (OFF) by MOSS, ISIAIAH			
07:08	MISSED 3PTR by BRAUN, CHRISTIAN			
07:04				REBOUND (DEF) by HARRIS JR., CHRIS
06:53				MISSED LAYUP by WATERS, III, LINDY
06:53	BLOCK by AZUBUIKE, UDOKA			
06:48	REBOUND (DEF) by AZUBUIKE, UDOKA			
06:42				FOUL (PERSONAL) by HARRIS JR., CHRIS
06:42				
06:42	SUB OUT: BRAUN, CHRISTIAN			
06:42	SUB OUT: ENARUNA, TRISTAN			
06:42	SUB IN: DOTSON, DEVON			
06:42	SUB IN: AGBAJI, OCHAI			
06:42	SUB OUT: GARRETT, MARCUS			
06:42	SUB IN: BRAUN, CHRISTIAN			
06:23	MISSED JUMPER by AGBAJI, OCHAI			
06:20				REBOUND (DEF) by WATERS, III, LINDY
06:09		11-24	V 13	GOOD! LAYUP by MCGRIFF, CAMERON
06:09				ASSIST by ANEI, YOR
05:49	MISSED 3PTR by AGBAJI, OCHAI			
05:48				REBOUND (DEF) by ANEI, YOR
05:44	FOUL (PERSONAL) by MOSS, ISIAIAH			
05:44		12-24	V 12	GOOD! FT by MCGRIFF, CAMERON [FB]
05:44	SUB OUT: MOSS, ISIAIAH			

Time	VISITORS: Kansas	Score	Margin	HOME: Oklahoma St.
05:44	SUB IN: GARRETT, MARCUS			
05:44		13-24	V 11	GOOD! FT by MCGRIFF, CAMERON [FB]
05:26	MISSED LAYUP by GARRETT, MARCUS			
05:26				BLOCK by ANEI, YOR
05:21				REBOUND (DEF) by LIKEKELE, ISAAC
05:15		15-24	V 9	GOOD! LAYUP by LIKEKELE, ISAAC [PNT]
05:15				ASSIST by WATERS, III,LINDY
04:58				SUB OUT: WATERS, III,LINDY
04:58				SUB IN: BOONE, KEYLAN
04:45	TURNOVER (LOSTBALL) by BRAUN, CHRISTIAN			
04:45				STEAL by LIKEKELE, ISAAC
04:39		18-24	V 6	GOOD! 3PTR by MCGRIFF, CAMERON [FB]
04:39				ASSIST by LIKEKELE, ISAAC
04:38	TIMEOUT 30SEC			
04:38	SUB OUT: GARRETT, MARCUS			
04:38	SUB IN: MOSS, ISAIAH			
04:20	TURNOVER (LOSTBALL) by AZUBUIKE, UDOKA			
04:20				STEAL by HARRIS JR., CHRIS
04:12				MISSED LAYUP by ANEI, YOR
04:07	REBOUND (DEF) by AZUBUIKE, UDOKA			
04:02	MISSED 3PTR by MOSS, ISAIAH			
03:58				REBOUND (DEF) by HARRIS JR., CHRIS
03:37	FOUL (PERSONAL) by AZUBUIKE, UDOKA			
03:37				
03:37	SUB OUT: BRAUN, CHRISTIAN			
03:37	SUB OUT: AZUBUIKE, UDOKA			
03:37	SUB IN: GARRETT, MARCUS			
03:37	SUB IN: ENARUNA, TRISTAN			
03:37		19-24	V 5	GOOD! FT by ANEI, YOR
03:37		20-24	V 4	GOOD! FT by ANEI, YOR
03:37				SUB OUT: HARRIS JR., CHRIS
03:37				SUB OUT: ANEI, YOR
03:37				SUB IN: WATERS, III,LINDY
03:37				SUB IN: BOONE, KALIB
03:09	MISSED 3PTR by DOTSON, DEVON			
03:05				REBOUND (DEF) by MCGRIFF, CAMERON
02:48	FOUL (PERSONAL) by ENARUNA, TRISTAN			
02:48		21-24	V 3	GOOD! FT by LIKEKELE, ISAAC
02:48		22-24	V 2	GOOD! FT by LIKEKELE, ISAAC
02:34				FOUL (PERSONAL) by BOONE, KEYLAN
02:34	MISSED FT by GARRETT, MARCUS			
02:34	REBOUND (OFF) by TEAM			
02:34				SUB OUT: BOONE, KALIB
02:34				SUB IN: LAURENT, JONATHAN
02:34	GOOD! FT by GARRETT, MARCUS	22-25	V 3	
02:03				MISSED LAYUP by LIKEKELE, ISAAC
02:00				REBOUND (OFF) by BOONE, KEYLAN
01:50				MISSED 3PTR by MCGRIFF, CAMERON
01:46	REBOUND (DEF) by GARRETT, MARCUS			
01:27	MISSED LAYUP by AGBAJI, OCHAI			
01:24	REBOUND (OFF) by ENARUNA, TRISTAN			
01:24	MISSED LAYUP by ENARUNA, TRISTAN			
01:22				REBOUND (DEF) by WATERS, III,LINDY
01:22				SUB OUT: BOONE, KEYLAN
01:22				SUB IN: DZIAGWA, THOMAS
01:22	SUB OUT: MOSS, ISAIAH			
01:22	SUB IN: BRAUN, CHRISTIAN			
01:15		24-25	V 1	GOOD! LAYUP by LIKEKELE, ISAAC
01:07	GOOD! LAYUP by DOTSON, DEVON [FB]	24-27	V 3	
00:41	FOUL (PERSONAL) by AGBAJI, OCHAI			
00:41				MISSED FT by MCGRIFF, CAMERON
00:41				REBOUND (OFF) by TEAM
00:41	SUB OUT: DOTSON, DEVON			
00:41	SUB IN: JANKOVICH, MICHAEL			
00:41				MISSED FT by MCGRIFF, CAMERON
00:39	REBOUND (DEF) by ENARUNA, TRISTAN			
00:11	MISSED 3PTR by GARRETT, MARCUS			
00:05	REBOUND (OFF) by BRAUN, CHRISTIAN			
00:04	GOOD! JUMPER by BRAUN, CHRISTIAN	24-29	V 5	

Kansas 29, Oklahoma St. 24

Points from (This Period)	KAN	OSU
In the Paint	6	10
Off Turns	5	3
2nd Chance	7	3
Fast Break	10	5
Bench	6	5

Official Box Score
Kansas vs Oklahoma St.
Second Half Statistics Only
January 27, 2020 at Gallagher-Iba Arena (Eddie Sutton Court) - Stillwater



Kansas 36

No.	Player	S	Pts	FG	3FG	FT	OR	DR	TR	PF	A	TO	Blk	Stl	Min	+/-
00	GARRETT, MARCUS	G	4	1-2	0-0	2-2	0	0	0	1	4	0	0	0	16	16
01	DOTSON, DEVON	G	4	1-2	0-0	2-3	0	1	1	1	2	1	0	0	12	-4
02	BRAUN, CHRISTIAN	G	8	2-4	2-3	2-2	1	5	6	3	0	1	1	1	17	6
30	AGBAJI, OCHAI	G	4	1-3	1-3	1-2	0	2	2	0	1	0	0	0	17	10
35	AZUBUIKE, UDOKA	C	6	3-4	0-0	0-0	1	3	4	0	0	2	3	1	16	20
04	MOSS, ISAAH	G	10	3-6	2-5	2-2	0	0	0	1	1	0	0	0	14	18
05	ELLIOTT, ELIJAH	G	0	0-0	0-0	0-0	0	0	0	0	0	0	0	0	1	-2
12	TEAHAN, CHRIS	G	0	0-1	0-1	0-0	0	0	0	0	0	0	0	0	1	-2
13	ENARUNA, TRISTAN	F	0	0-3	0-2	0-0	0	2	2	0	0	0	1	0	4	-10
20	JANKOVICH, MICHAEL	G	0	0-0	0-0	0-0	0	0	0	0	0	0	0	0	1	-2
	TEAM						1	2	3	0		0				
TOTALS			36	11-25	5-14	9-11	3	15	18	6	8	4	5	2	98	

Shooting By Period

Period	FG	FG%	3FG	3FG%	FT	FT%
2nd Half	11-25	44%	5-14	36%	9-11	82%
Game	21-54	38.9%	11-33	33.3%	12-15	80.0%

Deadball Rebounds: 2,0

Last FG Half: KAN -

Oklahoma St. 26

No.	Player	S	Pts	FG	3FG	FT	OR	DR	TR	PF	A	TO	Blk	Stl	Min	+/-
00	ANDERSON, III, AVERY	G	0	0-2	0-1	0-0	0	0	0	1	0	0	1	0	8	9
12	MCGRIFF, CAMERON	F	9	3-6	0-1	3-4	3	2	5	3	1	1	0	0	17	-2
13	LIKEKELE, ISAAC	G	4	2-5	0-1	0-0	0	1	1	0	1	0	0	0	15	-10
21	WATERS, III, LINDY	G	3	1-4	0-0	1-2	1	0	1	2	2	0	0	0	15	-15
22	BOONE, KALIB	F	4	1-2	0-0	2-2	2	5	7	0	0	0	1	1	6	9
01	LAURENT, JONATHAN	G	2	1-5	0-1	0-0	0	0	0	0	0	0	0	0	8	-12
02	HARRIS JR., CHRIS	G	2	1-4	0-1	0-0	0	1	1	1	0	0	0	0	10	-8
04	DZIAGWA, THOMAS	G	0	0-0	0-0	0-0	0	0	0	1	0	1	0	0	5	-10
14	ANEI, YOR	F	2	1-4	0-0	0-0	1	1	2	0	0	1	0	0	8	-15
20	BOONE, KEYLAN	G	0	0-2	0-1	0-0	0	1	1	1	0	1	0	1	7	4
	TEAM						2	1	3	0		0				
TOTALS			26	10-34	0-6	6-8	9	12	21	9	4	4	2	2	98	

Shooting By Period

Period	FG	FG%	3FG	3FG%	FT	FT%
2nd Half	10-34	29%	0-6	00%	6-8	75%
Game	18-64	28.1%	2-18	11.1%	12-16	75.0%

Deadball Rebounds: 3,0

Last FG Half: OSU -

Game Notes:

Officials: Joe DeRosa, Rick Crawford, James Breeding

Start Time: 09:00 PM ET

Conference Game;

Score	1st	2nd	TOT
KAN	29	36	65
OSU	24	26	50

Points from (This Period)	KAN	OSU
In the Paint	10	14
Off Turns	7	6
2nd Chance	3	5
Fast Break	6	6
Bench	10	6

**Official Play-By-Play
Kansas vs Oklahoma St.
Second Half**

January 27, 2020 at Gallagher-Iba Arena (Eddie Sutton Court) - Stillwater



Period 2

Starters:

Kansas: 00 GARRETT, MARCUS (G); 1 DOTSON, DEVON (G); 2 BRAUN, CHRISTIAN (G); 30 AGBAJI, OCHAI (G); 35 AZUBUIKE, UDOKA (C);

Oklahoma St.: 00 ANDERSON, III, AVERY (G); 12 MCGRIFF, CAMERON (F); 13 LIKEKELE, ISAAC (G); 21 WATERS, III, LINDY (G); 22 BOONE, KALIB (F);

Time	VISITORS: Kansas	Score	Margin	HOME: Oklahoma St.
20:00				SUB OUT: LAURENT, JONATHAN
20:00				SUB OUT: DZIAGWA, THOMAS
20:00				SUB IN: ANDERSON, III, AVERY
20:00				SUB IN: BOONE, KALIB
20:00	SUB OUT: ENARUNA, TRISTAN			
20:00	SUB OUT: JANKOVICH, MICHAEL			
20:00	SUB IN: DOTSON, DEVON			
20:00	SUB IN: AZUBUIKE, UDOKA			
19:42				MISSED 3PTR by ANDERSON, III, AVERY
19:39	REBOUND (DEF) by AZUBUIKE, UDOKA			
19:20	MISSED DUNK by AZUBUIKE, UDOKA			
19:20				REBOUND (DEF) by TEAM
18:55				MISSED LAYUP by LIKEKELE, ISAAC
18:52	REBOUND (DEF) by BRAUN, CHRISTIAN			
18:34	MISSED 3PTR by AGBAJI, OCHAI			
18:29				REBOUND (DEF) by BOONE, KALIB
18:10		26-29	V 3	GOOD! JUMPER by WATERS, III, LINDY
17:51	GOOD! 3PTR by BRAUN, CHRISTIAN	26-32	V 6	
17:51	ASSIST by GARRETT, MARCUS			
17:25				MISSED JUMPER by BOONE, KALIB
17:22	REBOUND (DEF) by AGBAJI, OCHAI			
17:20	FOUL (OFF) by BRAUN, CHRISTIAN			
17:20	TURNOVER (OFFENSIVE) by BRAUN, CHRISTIAN			
17:20				SUB OUT: ANDERSON, III, AVERY
17:20				SUB OUT: BOONE, KALIB
17:20				SUB IN: DZIAGWA, THOMAS
17:20				SUB IN: ANEI, YOR
17:08	FOUL (PERSONAL) by DOTSON, DEVON			
17:08		27-32	V 5	GOOD! FT by MCGRIFF, CAMERON [FB]
17:08	SUB OUT: DOTSON, DEVON			
17:08	SUB IN: MOSS, ISIAIAH			
17:08		28-32	V 4	GOOD! FT by MCGRIFF, CAMERON [FB]
16:56				FOUL (PERSONAL) by MCGRIFF, CAMERON
16:56	MISSED FT by AGBAJI, OCHAI			
16:56	REBOUND (OFF) by TEAM			
16:56	GOOD! FT by AGBAJI, OCHAI	28-33	V 5	
16:32				MISSED LAYUP by ANEI, YOR
16:28	REBOUND (DEF) by BRAUN, CHRISTIAN			
16:23	GOOD! 3PTR by BRAUN, CHRISTIAN	28-36	V 8	
16:23	ASSIST by MOSS, ISIAIAH			
16:15				TURNOVER (OTHER) by DZIAGWA, THOMAS
15:57	GOOD! 3PTR by MOSS, ISIAIAH	28-39	V 11	
15:57	ASSIST by AGBAJI, OCHAI			
15:52				TIMEOUT 30SEC
15:37				MISSED LAYUP by WATERS, III, LINDY
15:37	BLOCK by AZUBUIKE, UDOKA			
15:34				REBOUND (OFF) by WATERS, III, LINDY
15:24				MISSED 3PTR by LIKEKELE, ISAAC
15:21	REBOUND (DEF) by BRAUN, CHRISTIAN			
15:03	GOOD! LAYUP by GARRETT, MARCUS [PNT]	28-41	V 13	
14:35				MISSED JUMPER by ANEI, YOR
14:29	REBOUND (DEF) by AZUBUIKE, UDOKA			
14:06	GOOD! LAYUP by AZUBUIKE, UDOKA	28-43	V 15	
14:06	ASSIST by GARRETT, MARCUS			
13:45				TURNOVER (LOSTBALL) by ANEI, YOR
13:45	STEAL by AZUBUIKE, UDOKA			
13:45				SUB OUT: ANEI, YOR
13:45				SUB OUT: WATERS, III, LINDY
13:45				SUB IN: LAURENT, JONATHAN
13:45				SUB IN: HARRIS JR., CHRIS
13:25				FOUL (PERSONAL) by DZIAGWA, THOMAS
13:25	GOOD! FT by MOSS, ISIAIAH	28-44	V 16	
13:25	GOOD! FT by MOSS, ISIAIAH	28-45	V 17	
13:09				MISSED LAYUP by LAURENT, JONATHAN
13:06				REBOUND (OFF) by MCGRIFF, CAMERON
12:58				MISSED 3PTR by MCGRIFF, CAMERON
12:54	REBOUND (DEF) by BRAUN, CHRISTIAN			
12:48	MISSED 3PTR by AGBAJI, OCHAI			
12:45				REBOUND (DEF) by LIKEKELE, ISAAC

Time	VISITORS: Kansas	Score	Margin	HOME: Oklahoma St.
12:30	FOUL (PERSONAL) by BRAUN, CHRISTIAN			
12:30				MISSED FT by MCGRIFF, CAMERON
12:30				REBOUND (OFF) by TEAM
12:30		29-45	V 16	GOOD! FT by MCGRIFF, CAMERON
12:30				SUB OUT: DZIAGWA, THOMAS
12:30				SUB IN: BOONE, KEYLAN
12:13	GOOD! LAYUP by AZUBUIKE, UDOKA	29-47	V 18	
12:13	ASSIST by GARRETT, MARCUS			
12:01				MISSED LAYUP by HARRIS JR., CHRIS
12:01	BLOCK by BRAUN, CHRISTIAN			
12:01				REBOUND (OFF) by TEAM
12:01				SUB OUT: LIKEKELE, ISAAC
12:01				SUB IN: ANDERSON, III, AVERY
11:50				MISSED JUMPER by HARRIS JR., CHRIS
11:48	REBOUND (DEF) by TEAM			
11:48				
11:48				SUB OUT: HARRIS JR., CHRIS
11:48				SUB IN: WATERS, III, LINDY
11:29	GOOD! JUMPER by MOSS, ISAIAH	29-49	V 20	
11:29	ASSIST by GARRETT, MARCUS			
11:18		31-49	V 18	GOOD! LAYUP by MCGRIFF, CAMERON
11:18				ASSIST by WATERS, III, LINDY
10:52	MISSED LAYUP by GARRETT, MARCUS			
10:52	REBOUND (OFF) by AZUBUIKE, UDOKA			
10:52				FOUL (PERSONAL) by MCGRIFF, CAMERON
10:52				SUB OUT: ANDERSON, III, AVERY
10:52				SUB IN: HARRIS JR., CHRIS
10:41	GOOD! 3PTR by AGBAJI, OCHAI	31-52	V 21	
10:17				MISSED 3PTR by LAURENT, JONATHAN
10:17				REBOUND (OFF) by MCGRIFF, CAMERON
10:17	FOUL (PERSONAL) by GARRETT, MARCUS			
10:11				MISSED JUMPER by MCGRIFF, CAMERON
10:11	BLOCK by AZUBUIKE, UDOKA			
10:06	REBOUND (DEF) by AZUBUIKE, UDOKA			
10:02	TURNOVER (LOSTBALL) by AZUBUIKE, UDOKA			
10:02				STEAL by BOONE, KEYLAN
09:51		33-52	V 19	GOOD! DUNK by LAURENT, JONATHAN
09:51				ASSIST by WATERS, III, LINDY
09:29	MISSED 3PTR by BRAUN, CHRISTIAN			
09:25	REBOUND (OFF) by TEAM			
09:25	SUB OUT: AGBAJI, OCHAI			
09:25	SUB IN: DOTSON, DEVON			
09:11				FOUL (PERSONAL) by MCGRIFF, CAMERON
08:56	MISSED 3PTR by MOSS, ISAIAH			
08:52				REBOUND (DEF) by MCGRIFF, CAMERON
08:39				MISSED LAYUP by LAURENT, JONATHAN
08:39	BLOCK by AZUBUIKE, UDOKA			
08:33				REBOUND (OFF) by MCGRIFF, CAMERON
08:33				MISSED LAYUP by MCGRIFF, CAMERON
08:32	REBOUND (DEF) by BRAUN, CHRISTIAN			
08:31				FOUL (PERSONAL) by BOONE, KEYLAN
08:31				SUB OUT: MCGRIFF, CAMERON
08:31				SUB IN: ANEI, YOR
08:18	MISSED 3PTR by MOSS, ISAIAH			
08:14				REBOUND (DEF) by HARRIS JR., CHRIS
08:05				TURNOVER (BADPASS) by BOONE, KEYLAN
08:05	STEAL by BRAUN, CHRISTIAN			
08:01				FOUL (PERSONAL) by WATERS, III, LINDY
08:01	GOOD! FT by BRAUN, CHRISTIAN [FB]	33-53	V 20	
08:01				SUB OUT: BOONE, KEYLAN
08:01				SUB IN: LIKEKELE, ISAAC
08:01	GOOD! FT by BRAUN, CHRISTIAN [FB]	33-54	V 21	
08:01	SUB OUT: BRAUN, CHRISTIAN			
08:01	SUB IN: AGBAJI, OCHAI			
07:49				MISSED JUMPER by WATERS, III, LINDY
07:47				REBOUND (OFF) by TEAM
07:47				
07:32				MISSED JUMPER by ANEI, YOR
07:32	REBOUND (DEF) by TEAM			
07:19	GOOD! 3PTR by MOSS, ISAIAH	33-57	V 24	
07:19	ASSIST by DOTSON, DEVON			
07:04				MISSED 3PTR by HARRIS JR., CHRIS
07:00				REBOUND (OFF) by ANEI, YOR
06:55	FOUL (PERSONAL) by MOSS, ISAIAH			
06:55				MISSED FT by WATERS, III, LINDY
06:55				REBOUND (OFF) by TEAM
06:55		34-57	V 23	GOOD! FT by WATERS, III, LINDY
06:42				FOUL (PERSONAL) by HARRIS JR., CHRIS
06:42	GOOD! FT by GARRETT, MARCUS	34-58	V 24	
06:42	GOOD! FT by GARRETT, MARCUS	34-59	V 25	

Time	VISITORS: Kansas	Score	Margin	HOME: Oklahoma St.
06:23				MISSED LAYUP by LAURENT, JONATHAN
06:20	REBOUND (DEF) by AGBAJI, OCHAI			
06:17	GOOD! DUNK by AZUBUIKE, UDOKA [FB]	34-61	V 27	
06:17	ASSIST by DOTSON, DEVON			
06:03				TIMEOUT TEAM
06:03				SUB OUT: LAURENT, JONATHAN
06:03				SUB IN: MCGRIFF, CAMERON
06:03	SUB OUT: GARRETT, MARCUS			
06:03	SUB IN: BRAUN, CHRISTIAN			
05:49		36-61	V 25	GOOD! LAYUP by MCGRIFF, CAMERON
05:32	TURNOVER (TRAVEL) by AZUBUIKE, UDOKA			
05:22				TURNOVER (OTHER) by MCGRIFF, CAMERON
04:54	MISSED 3PTR by MOSS, ISAIAH			
04:52				REBOUND (DEF) by ANEI, YOR
04:45				MISSED JUMPER by WATERS, III,LINDY
04:40	REBOUND (DEF) by DOTSON, DEVON			
04:39	GOOD! LAYUP by DOTSON, DEVON [FB]	36-63	V 27	
04:27		38-63	V 25	GOOD! JUMPER by ANEI, YOR
04:27				ASSIST by LIKEKELE, ISAAC
04:06				FOUL (PERSONAL) by WATERS, III,LINDY
04:06				SUB OUT: HARRIS JR., CHRIS
04:06				SUB OUT: ANEI, YOR
04:06				SUB IN: ANDERSON, III,AVERY
04:06				SUB IN: BOONE, KALIB
04:06	SUB OUT: AZUBUIKE, UDOKA			
04:06	SUB IN: ENARUNA, TRISTAN			
04:06	MISSED FT by DOTSON, DEVON			
04:05				REBOUND (DEF) by BOONE, KALIB
03:50		40-63	V 23	GOOD! LAYUP by MCGRIFF, CAMERON
03:27	MISSED 3PTR by ENARUNA, TRISTAN			
03:25				REBOUND (DEF) by MCGRIFF, CAMERON
03:14				
03:14				SUB OUT: WATERS, III,LINDY
03:14				SUB IN: BOONE, KEYLAN
03:14	SUB OUT: MOSS, ISAIAH			
03:14	SUB IN: GARRETT, MARCUS			
03:03				MISSED LAYUP by LIKEKELE, ISAAC
03:03	BLOCK by ENARUNA, TRISTAN			
03:02				REBOUND (OFF) by BOONE, KALIB
03:02	FOUL (PERSONAL) by BRAUN, CHRISTIAN			
03:02		41-63	V 22	GOOD! FT by BOONE, KALIB
03:02		42-63	V 21	GOOD! FT by BOONE, KALIB
02:48	TURNOVER (BADPASS) by DOTSON, DEVON			
02:48				STEAL by BOONE, KALIB
02:42		44-63	V 19	GOOD! JUMPER by LIKEKELE, ISAAC [PNT]
02:42				ASSIST by MCGRIFF, CAMERON
02:05	MISSED LAYUP by ENARUNA, TRISTAN			
02:05				BLOCK by BOONE, KALIB
02:01				REBOUND (DEF) by BOONE, KALIB
02:00				MISSED 3PTR by BOONE, KEYLAN
01:55	REBOUND (DEF) by ENARUNA, TRISTAN			
01:46	MISSED 3PTR by ENARUNA, TRISTAN			
01:40	REBOUND (OFF) by BRAUN, CHRISTIAN			
01:40	MISSED LAYUP by BRAUN, CHRISTIAN			
01:39				REBOUND (DEF) by BOONE, KALIB
01:34		46-63	V 17	GOOD! LAYUP by LIKEKELE, ISAAC [FB]
01:29				FOUL (PERSONAL) by ANDERSON, III,AVERY
01:29				SUB OUT: LIKEKELE, ISAAC
01:29				SUB IN: HARRIS JR., CHRIS
01:29	SUB OUT: GARRETT, MARCUS			
01:29	SUB OUT: BRAUN, CHRISTIAN			
01:29	SUB OUT: AGBAJI, OCHAI			
01:29	SUB IN: ELLIOTT, ELIJAH			
01:29	SUB IN: TEAHAN, CHRIS			
01:29	SUB IN: JANKOVICH, MICHAEL			
01:29	GOOD! FT by DOTSON, DEVON	46-64	V 18	
01:29	GOOD! FT by DOTSON, DEVON	46-65	V 19	
01:16				MISSED JUMPER by ANDERSON, III,AVERY
01:13	REBOUND (DEF) by ENARUNA, TRISTAN			
01:05	MISSED 3PTR by TEAHAN, CHRIS			
01:00				REBOUND (DEF) by BOONE, KEYLAN
00:57		48-65	V 17	GOOD! JUMPER by HARRIS JR., CHRIS [FB]
00:45	MISSED LAYUP by DOTSON, DEVON			
00:45				BLOCK by ANDERSON, III,AVERY
00:40				REBOUND (DEF) by BOONE, KALIB
00:29				MISSED LAYUP by BOONE, KEYLAN
00:24				REBOUND (OFF) by BOONE, KALIB
00:24		50-65	V 15	GOOD! LAYUP by BOONE, KALIB

Kansas 65, Oklahoma St. 50

Points from (This Period)	KAN	OSU
In the Paint	10	14
Off Turns	7	6
2nd Chance	3	5
Fast Break	6	6
Bench	10	6

**Official Scoring/Possession Reference Chart
Kansas vs Oklahoma St.**

Period 1

January 27, 2020 at Gallagher-Iba Arena (Eddie Sutton Court) - Stillwater



Period 1

Starters:

Kansas: 00 GARRETT, MARCUS (G); 1 DOTSON, DEVON (G); 2 BRAUN, CHRISTIAN (G); 30 AGBAJI, OCHAI (G); 35 AZUBUIKE, UDOKA (C);

Oklahoma St.: 00 ANDERSON, III, AVERY (G); 12 MCGRIFF, CAMERON (F); 13 LIKEKELE, ISAAC (G); 21 WATERS, III, LINDY (G); 22 BOONE, KALIB (F);

Time	VISITORS: Kansas	Score	Margin	HOME: Oklahoma St.
19:35	GOOD! FT by AGBAJI, OCHAI	0-1	V 1	
19:35	GOOD! FT by AGBAJI, OCHAI	0-2	V 2	
17:27	GOOD! LAYUP by GARRETT, MARCUS	0-4	V 4	
16:52	GOOD! LAYUP by DOTSON, DEVON [FB]	0-6	V 6	
15:40		2-6	V 4	GOOD! LAYUP by ANDERSON, III, AVERY
15:18	GOOD! 3PTR by BRAUN, CHRISTIAN	2-9	V 7	
13:17	GOOD! 3PTR by DOTSON, DEVON	2-12	V 10	
12:59		4-12	V 8	GOOD! LAYUP by MCGRIFF, CAMERON
11:44	GOOD! 3PTR by BRAUN, CHRISTIAN [FB]	4-15	V 11	
11:11		7-15	V 8	GOOD! 3PTR by HARRIS JR., CHRIS
09:28	GOOD! 3PTR by ENARUNA, TRISTAN [FB]	7-18	V 11	
09:07	GOOD! 3PTR by AGBAJI, OCHAI	7-21	V 14	
07:55	GOOD! 3PTR by MOSS, ISAIAH	7-24	V 17	
07:38		9-24	V 15	GOOD! JUMPER by WATERS, III, LINDY
06:09		11-24	V 13	GOOD! LAYUP by MCGRIFF, CAMERON
05:44		12-24	V 12	GOOD! FT by MCGRIFF, CAMERON [FB]
05:44		13-24	V 11	GOOD! FT by MCGRIFF, CAMERON [FB]
05:15		15-24	V 9	GOOD! LAYUP by LIKEKELE, ISAAC [PNT]
04:39		18-24	V 6	GOOD! 3PTR by MCGRIFF, CAMERON [FB]
03:37		19-24	V 5	GOOD! FT by ANEI, YOR
03:37		20-24	V 4	GOOD! FT by ANEI, YOR
02:48		21-24	V 3	GOOD! FT by LIKEKELE, ISAAC
02:48		22-24	V 2	GOOD! FT by LIKEKELE, ISAAC
02:34	GOOD! FT by GARRETT, MARCUS	22-25	V 3	
01:15		24-25	V 1	GOOD! LAYUP by LIKEKELE, ISAAC
01:07	GOOD! LAYUP by DOTSON, DEVON [FB]	24-27	V 3	
00:04	GOOD! JUMPER by BRAUN, CHRISTIAN	24-29	V 5	

Kansas 29, Oklahoma St. 24

**Official Scoring/Possession Reference Chart
Kansas vs Oklahoma St.
Period 2**

January 27, 2020 at Gallagher-Iba Arena (Eddie Sutton Court) - Stillwater



Period 2

Starters:

Kansas: 00 GARRETT, MARCUS (G); 1 DOTSON, DEVON (G); 2 BRAUN, CHRISTIAN (G); 30 AGBAJI, OCHAI (G); 35 AZUBUIKE, UDOKA (C);

Oklahoma St.: 00 ANDERSON, III, AVERY (G); 12 MCGRIFF, CAMERON (F); 13 LIKEKELE, ISAAC (G); 21 WATERS, III, LINDY (G); 22 BOONE, KALIB (F);

Time	VISITORS: Kansas	Score	Margin	HOME: Oklahoma St.
18:10		26-29	V 3	GOOD! JUMPER by WATERS, III, LINDY
17:51	GOOD! 3PTR by BRAUN, CHRISTIAN	26-32	V 6	
17:08		27-32	V 5	GOOD! FT by MCGRIFF, CAMERON [FB]
17:08		28-32	V 4	GOOD! FT by MCGRIFF, CAMERON [FB]
16:56	GOOD! FT by AGBAJI, OCHAI	28-33	V 5	
16:23	GOOD! 3PTR by BRAUN, CHRISTIAN	28-36	V 8	
15:57	GOOD! 3PTR by MOSS, ISIAAH	28-39	V 11	
15:03	GOOD! LAYUP by GARRETT, MARCUS [PNT]	28-41	V 13	
14:06	GOOD! LAYUP by AZUBUIKE, UDOKA	28-43	V 15	
13:25	GOOD! FT by MOSS, ISIAAH	28-44	V 16	
13:25	GOOD! FT by MOSS, ISIAAH	28-45	V 17	
12:30		29-45	V 16	GOOD! FT by MCGRIFF, CAMERON
12:13	GOOD! LAYUP by AZUBUIKE, UDOKA	29-47	V 18	
11:29	GOOD! JUMPER by MOSS, ISIAAH	29-49	V 20	
11:18		31-49	V 18	GOOD! LAYUP by MCGRIFF, CAMERON
10:41	GOOD! 3PTR by AGBAJI, OCHAI	31-52	V 21	
09:51		33-52	V 19	GOOD! DUNK by LAURENT, JONATHAN
08:01	GOOD! FT by BRAUN, CHRISTIAN [FB]	33-53	V 20	
08:01	GOOD! FT by BRAUN, CHRISTIAN [FB]	33-54	V 21	
07:19	GOOD! 3PTR by MOSS, ISIAAH	33-57	V 24	
06:55		34-57	V 23	GOOD! FT by WATERS, III, LINDY
06:42	GOOD! FT by GARRETT, MARCUS	34-58	V 24	
06:42	GOOD! FT by GARRETT, MARCUS	34-59	V 25	
06:17	GOOD! DUNK by AZUBUIKE, UDOKA [FB]	34-61	V 27	
05:49		36-61	V 25	GOOD! LAYUP by MCGRIFF, CAMERON
04:39	GOOD! LAYUP by DOTSON, DEVON [FB]	36-63	V 27	
04:27		38-63	V 25	GOOD! JUMPER by ANEI, YOR
03:50		40-63	V 23	GOOD! LAYUP by MCGRIFF, CAMERON
03:02		41-63	V 22	GOOD! FT by BOONE, KALIB
03:02		42-63	V 21	GOOD! FT by BOONE, KALIB
02:42		44-63	V 19	GOOD! JUMPER by LIKEKELE, ISAAC [PNT]
01:34		46-63	V 17	GOOD! LAYUP by LIKEKELE, ISAAC [FB]
01:29	GOOD! FT by DOTSON, DEVON	46-64	V 18	
01:29	GOOD! FT by DOTSON, DEVON	46-65	V 19	
00:57		48-65	V 17	GOOD! JUMPER by HARRIS JR., CHRIS [FB]
00:24		50-65	V 15	GOOD! LAYUP by BOONE, KALIB

Kansas 65, Oklahoma St. 50

**Official Substitutions Log
Kansas vs Oklahoma St.
Period 1**

January 27, 2020 at Gallagher-Iba Arena (Eddie Sutton Court) - Stillwater



VISITORS: Kansas	Time	Score	HOME: Oklahoma St.
00 GARRETT, MARCUS			00 ANDERSON, III, AVERY
1 DOTSON, DEVON			12 MCGRIFF, CAMERON
2 BRAUN, CHRISTIAN			13 LIKEKELE, ISAAC
30 AGBAJI, OCHAI			21 WATERS, III, LINDY
35 AZUBUIKE, UDOKA			22 BOONE, KALIB
	15:40	6-2	SUB OUT: ANDERSON, III, AVERY
	15:40		SUB OUT: BOONE, KALIB
	15:40		SUB IN: DZIAGWA, THOMAS
	15:40		SUB IN: ANEI, YOR
SUB OUT: 2 BRAUN, CHRISTIAN	13:53	9-2	
SUB OUT: 35 AZUBUIKE, UDOKA	13:53		
SUB IN: 4 MOSS, ISAIAH	13:53		
SUB IN: 13 ENARUNA, TRISTAN	13:53		
	12:30	12-4	SUB OUT: ANEI, YOR
	12:30		SUB IN: LAURENT, JONATHAN
	12:30		SUB OUT: WATERS, III, LINDY
	12:30		SUB IN: HARRIS JR., CHRIS
SUB OUT: 1 DOTSON, DEVON	12:26	12-4	
SUB IN: 2 BRAUN, CHRISTIAN	12:26		
	10:55	15-7	SUB OUT: MCGRIFF, CAMERON
	10:55		SUB OUT: LIKEKELE, ISAAC
	10:55		SUB IN: ANDERSON, III, AVERY
	10:55		SUB IN: WATERS, III, LINDY
	09:07	21-7	SUB OUT: ANDERSON, III, AVERY
	09:07		SUB OUT: LAURENT, JONATHAN
	09:07		SUB OUT: DZIAGWA, THOMAS
	09:07		SUB IN: MCGRIFF, CAMERON
	09:07		SUB IN: LIKEKELE, ISAAC
	09:07		SUB IN: ANEI, YOR
SUB OUT: 30 AGBAJI, OCHAI	09:07		
SUB IN: 35 AZUBUIKE, UDOKA	09:07		
SUB OUT: 2 BRAUN, CHRISTIAN	06:42	24-9	
SUB OUT: 13 ENARUNA, TRISTAN	06:42		
SUB IN: 1 DOTSON, DEVON	06:42		
SUB IN: 30 AGBAJI, OCHAI	06:42		
SUB OUT: 00 GARRETT, MARCUS	06:42		
SUB IN: 2 BRAUN, CHRISTIAN	06:42		
SUB OUT: 4 MOSS, ISAIAH	05:44	24-12	
SUB IN: 00 GARRETT, MARCUS	05:44		
	04:58	24-15	SUB OUT: WATERS, III, LINDY
	04:58		SUB IN: BOONE, KEYLAN
SUB OUT: 00 GARRETT, MARCUS	04:38	24-18	
SUB IN: 4 MOSS, ISAIAH	04:38		
SUB OUT: 2 BRAUN, CHRISTIAN	03:37	24-18	
SUB OUT: 35 AZUBUIKE, UDOKA	03:37		
SUB IN: 00 GARRETT, MARCUS	03:37		
SUB IN: 13 ENARUNA, TRISTAN	03:37		
	03:37		SUB OUT: HARRIS JR., CHRIS
	03:37		SUB OUT: ANEI, YOR
	03:37		SUB IN: WATERS, III, LINDY
	03:37		SUB IN: BOONE, KALIB
	02:34	24-22	SUB OUT: BOONE, KALIB
	02:34		SUB IN: LAURENT, JONATHAN
	01:22	25-22	SUB OUT: BOONE, KEYLAN
	01:22		SUB IN: DZIAGWA, THOMAS
SUB OUT: 4 MOSS, ISAIAH	01:22		
SUB IN: 2 BRAUN, CHRISTIAN	01:22		
SUB OUT: 1 DOTSON, DEVON	00:41	27-24	
SUB IN: 20 JANKOVICH, MICHAEL	00:41		

Kansas 29, Oklahoma St. 24

**Official Substitutions Log
Kansas vs Oklahoma St.
Period 2**

January 27, 2020 at Gallagher-Iba Arena (Eddie Sutton Court) - Stillwater



VISITORS: Kansas	Time	Score	HOME: Oklahoma St.
00 GARRETT, MARCUS			00 ANDERSON, III, AVERY
1 DOTSON, DEVON			12 MCGRIFF, CAMERON
2 BRAUN, CHRISTIAN			13 LIKEKELE, ISAAC
30 AGBAJI, OCHAI			21 WATERS, III, LINDY
35 AZUBUIKE, UDOKA			22 BOONE, KALIB
	20:00	-	SUB OUT: LAURENT, JONATHAN
	20:00		SUB OUT: DZIAGWA, THOMAS
	20:00		SUB IN: ANDERSON, III, AVERY
	20:00		SUB IN: BOONE, KALIB
SUB OUT: 13 ENARUNA, TRISTAN	20:00		
SUB OUT: 20 JANKOVICH, MICHAEL	20:00		
SUB IN: 1 DOTSON, DEVON	20:00		
SUB IN: 35 AZUBUIKE, UDOKA	20:00		
	17:20	32-26	SUB OUT: ANDERSON, III, AVERY
	17:20		SUB OUT: BOONE, KALIB
	17:20		SUB IN: DZIAGWA, THOMAS
	17:20		SUB IN: ANEI, YOR
SUB OUT: 1 DOTSON, DEVON	17:08	32-27	
SUB IN: 4 MOSS, ISIAH	17:08		
	13:45	43-28	SUB OUT: ANEI, YOR
	13:45		SUB OUT: WATERS, III, LINDY
	13:45		SUB IN: LAURENT, JONATHAN
	13:45		SUB IN: HARRIS JR., CHRIS
	12:30	45-29	SUB OUT: DZIAGWA, THOMAS
	12:30		SUB IN: BOONE, KEYLAN
	12:01	47-29	SUB OUT: LIKEKELE, ISAAC
	12:01		SUB IN: ANDERSON, III, AVERY
	11:48	47-29	SUB OUT: HARRIS JR., CHRIS
	11:48		SUB IN: WATERS, III, LINDY
	10:52	49-31	SUB OUT: ANDERSON, III, AVERY
	10:52		SUB IN: HARRIS JR., CHRIS
SUB OUT: 30 AGBAJI, OCHAI	09:25	52-33	
SUB IN: 1 DOTSON, DEVON	09:25		
	08:31	52-33	SUB OUT: MCGRIFF, CAMERON
	08:31		SUB IN: ANEI, YOR
	08:01	53-33	SUB OUT: BOONE, KEYLAN
	08:01		SUB IN: LIKEKELE, ISAAC
SUB OUT: 2 BRAUN, CHRISTIAN	08:01		
SUB IN: 30 AGBAJI, OCHAI	08:01		
	06:03	61-34	SUB OUT: LAURENT, JONATHAN
	06:03		SUB IN: MCGRIFF, CAMERON
SUB OUT: 00 GARRETT, MARCUS	06:03		
SUB IN: 2 BRAUN, CHRISTIAN	06:03		
	04:06	63-38	SUB OUT: HARRIS JR., CHRIS
	04:06		SUB OUT: ANEI, YOR
	04:06		SUB IN: ANDERSON, III, AVERY
	04:06		SUB IN: BOONE, KALIB
SUB OUT: 35 AZUBUIKE, UDOKA	04:06		
SUB IN: 13 ENARUNA, TRISTAN	04:06		
	03:14	63-40	SUB OUT: WATERS, III, LINDY
	03:14		SUB IN: BOONE, KEYLAN
SUB OUT: 4 MOSS, ISIAH	03:14		
SUB IN: 00 GARRETT, MARCUS	03:14		
	01:29	63-46	SUB OUT: LIKEKELE, ISAAC
	01:29		SUB IN: HARRIS JR., CHRIS
SUB OUT: 00 GARRETT, MARCUS	01:29		
SUB OUT: 2 BRAUN, CHRISTIAN	01:29		
SUB OUT: 30 AGBAJI, OCHAI	01:29		
SUB IN: 5 ELLIOTT, ELIJAH	01:29		
SUB IN: 12 TEAHAN, CHRIS	01:29		
SUB IN: 20 JANKOVICH, MICHAEL	01:29		

Kansas 65, Oklahoma St. 50

Official Shot Chart
Kansas vs Oklahoma St.
PERIOD 1 Shots
 January 27, 2020 at Gallagher-Iba Arena (Eddie Sutton Court) - Stillwater

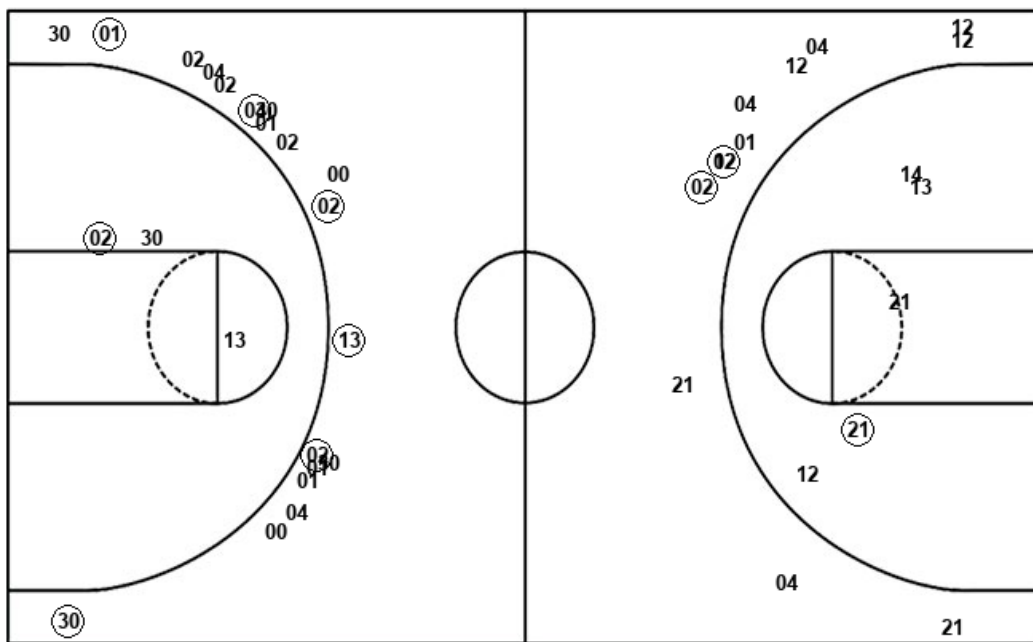


Oklahoma St.

Kansas

Layups
 00 (00) 13 (12) 12
 13 00 21 (12) (13)
 14 13 (13)

Layups
 (00) (01) 02 00 30
 13 (01)



Dunks

Dunks

OSU : Period 1	Made	Att	Pct
Layups	5	13	38.5
Dunks	0	0	0
2PT Field Goals	6	18	33.3
3PT Field Goals	2	12	16.7
Total Field Goals	8	30	26.7

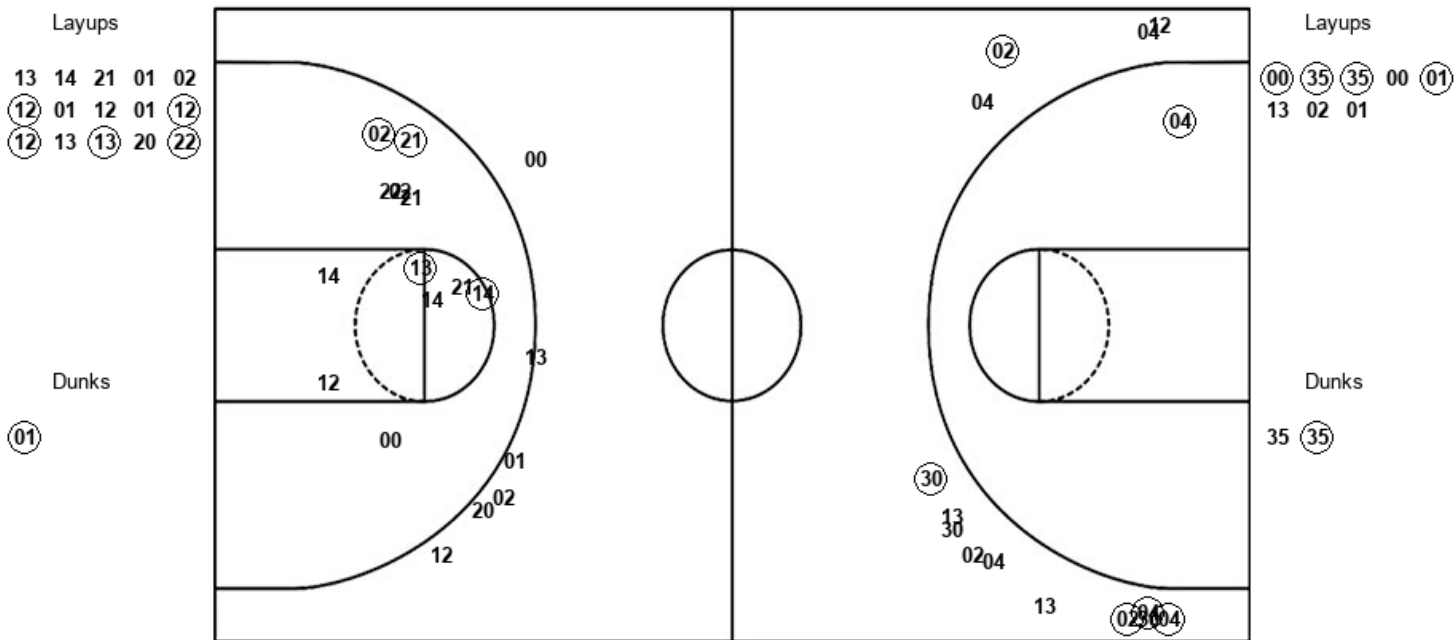
KAN : Period 1	Made	Att	Pct
Layups	3	7	42.9
Dunks	0	0	0
2PT Field Goals	4	10	40.0
3PT Field Goals	6	19	31.6
Total Field Goals	10	29	34.5

Official Shot Chart
Kansas vs Oklahoma St.
PERIOD 2 Shots
 January 27, 2020 at Gallagher-Iba Arena (Eddie Sutton Court) - Stillwater



Oklahoma St.

Kansas



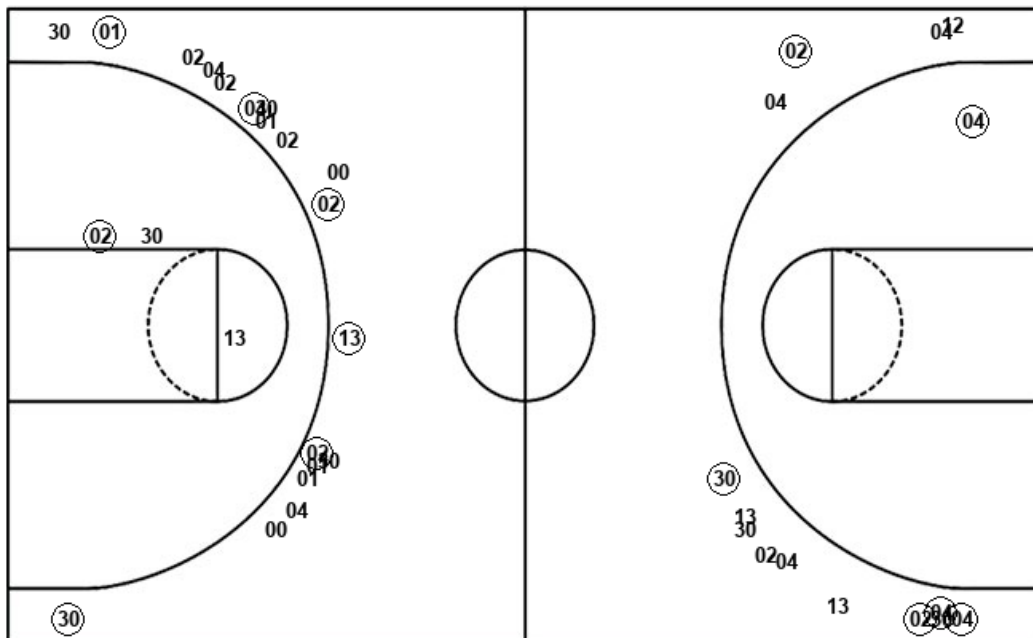
OSU : Period 2	Made	Att	Pct
Layups	5	15	33.3
Dunks	1	1	100.0
2PT Field Goals	10	28	35.7
3PT Field Goals	0	6	00.0
Total Field Goals	10	34	29.4

KAN : Period 2	Made	Att	Pct
Layups	4	8	50.0
Dunks	1	2	50.0
2PT Field Goals	6	11	54.5
3PT Field Goals	5	14	35.7
Total Field Goals	11	25	44.0

Official Shot Chart
Kansas vs Oklahoma St.
Kansas Team Shots
 January 27, 2020 at Gallagher-Iba Arena (Eddie Sutton Court) - Stillwater



Layups



Layups

00 01 02 00 30
 13 01 00 35 35
 00 01 13 02 01

Dunks

Dunks

35 35

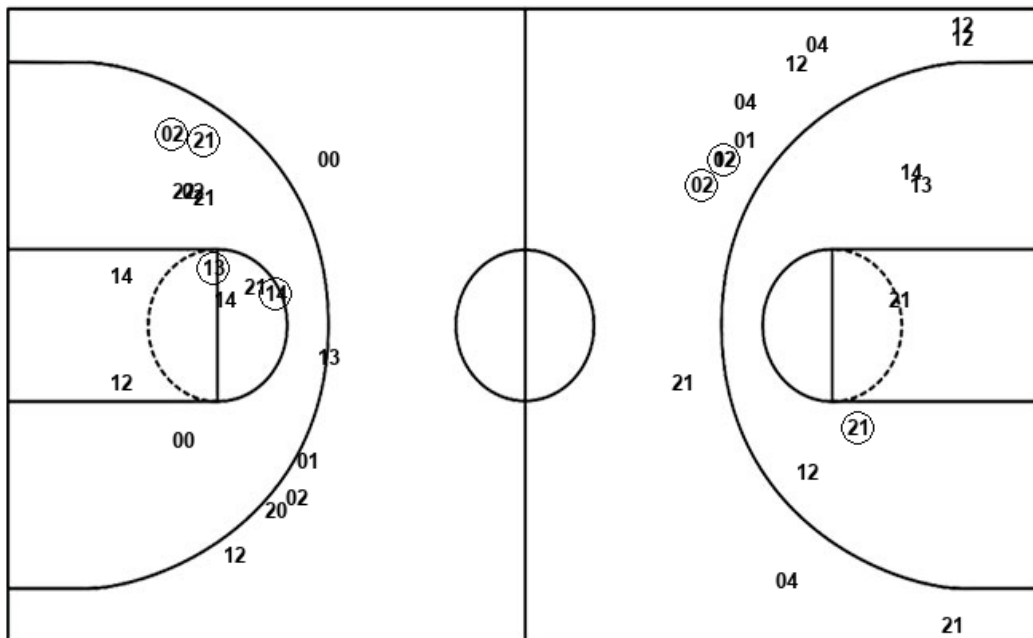
KAN : Period 1	Made	Att	Pct
Layups	3	7	42.9
Dunks	0	0	0
2PT Field Goals	4	10	40.0
3PT Field Goals	6	19	31.6
Total Field Goals	10	29	34.5

KAN : Period 2	Made	Att	Pct
Layups	4	8	50.0
Dunks	1	2	50.0
2PT Field Goals	6	11	54.5
3PT Field Goals	5	14	35.7
Total Field Goals	11	25	44.0

Official Shot Chart
Kansas vs Oklahoma St.
 Oklahoma St. Team Shots
 January 27, 2020 at Gallagher-Iba Arena (Eddie Sutton Court) - Stillwater



Layups



Layups

00	00	13	12	12
13	00	21	12	13
14	13	13	13	14
21	01	02	12	01
12	01	12	12	13
13	20	22		

Dunks

Dunks

01

OSU : Period 1	Made	Att	Pct
Layups	5	13	38.5
Dunks	0	0	0
2PT Field Goals	6	18	33.3
3PT Field Goals	2	12	16.7
Total Field Goals	8	30	26.7

OSU : Period 2	Made	Att	Pct
Layups	5	15	33.3
Dunks	1	1	100.0
2PT Field Goals	10	28	35.7
3PT Field Goals	0	6	00.0
Total Field Goals	10	34	29.4