

FINAL SCORE

Oklahoma St.

58



Kansas

83



February 25, 2020 • Allen Fieldhouse

FINAL STATISTICS

Official Box Score
Oklahoma St. vs Kansas
Game Totals -- Final Statistics
February 25, 2020 at Allen Fieldhouse



Oklahoma St. 58

No.	Player	S	Pts	FG	3FG	FT	OR	DR	TR	PF	A	TO	Blk	Stl	Min	+/-
01	LAURENT, JONATHAN	G	0	0-2	0-0	0-0	1	7	8	2	1	2	1	0	24	-19
12	MCGRIFF, CAMERON	F	16	6-14	1-3	3-4	3	2	5	4	0	3	1	0	31	-23
13	LIKEKELE, ISAAC	G	11	3-8	0-0	5-7	0	6	6	3	0	3	2	1	35	-28
14	ANEI, YOR	F	7	3-9	0-0	1-2	2	3	5	1	2	2	4	1	29	-19
21	WATERS, III, LINDY	G	11	4-7	1-3	2-2	0	2	2	3	1	1	0	1	32	-31
00	ANDERSON, III, AVERY	G	2	1-2	0-0	0-0	0	1	1	1	1	2	0	0	11	-7
04	DZIAGWA, THOMAS	G	3	1-6	1-6	0-0	0	0	0	1	0	0	0	0	11	-12
20	BOONE, KEYLAN	G	2	1-1	0-0	0-0	0	1	1	0	0	0	1	0	7	5
22	BOONE, KALIB	F	6	1-3	0-0	4-4	0	1	1	4	2	0	0	1	11	-5
31	MITCHELL, DEE	G	0	0-0	0-0	0-0	0	0	0	0	1	0	0	0	5	8
35	ROESSINK, HIDDE	F	0	0-0	0-0	0-0	0	0	0	0	0	0	0	0	2	6
TEAM							1	2	3	0		0				
TOTALS			58	20-52	3-12	15-19	7	25	32	19	8	13	9	4	198	

Shooting By Period

Period	FG	FG%	3FG	3FG%	FT	FT%
1st Half	10-31	32%	2-9	22%	3-5	60%
2nd Half	10-21	48%	1-3	33%	12-14	86%
Game	20-52	38.5%	3-12	25.0%	15-19	78.9%

Last FG: 2nd-01:11
Largest lead: By 3 at
Technical Fouls: #12 MCGRIFF @ 2nd - 14:37;

Kansas 83

No.	Player	S	Pts	FG	3FG	FT	OR	DR	TR	PF	A	TO	Blk	Stl	Min	+/-
00	GARRETT, MARCUS	G	5	2-8	0-3	1-1	1	2	3	2	7	1	0	1	31	24
01	DOTSON, DEVON	G	11	3-12	1-4	4-5	0	5	5	2	4	2	0	1	28	30
04	MOSS, ISIAH	G	9	3-7	3-6	0-0	0	4	4	2	1	0	0	1	28	29
30	AGBAJI, OCHAI	G	15	5-9	2-6	3-3	0	0	0	1	1	1	0	0	27	21
35	AZUBUIKE, UDOKA	C	19	6-7	0-0	7-8	8	8	16	1	2	2	3	0	27	27
02	BRAUN, CHRISTIAN	G	10	3-5	3-4	1-1	0	2	2	2	0	1	0	0	22	9
12	TEAHAN, CHRIS	G	0	0-1	0-1	0-0	0	0	0	0	0	0	0	0	2	-7
13	ENARUNA, TRISTAN	F	4	1-4	1-3	1-2	1	1	2	1	0	0	0	0	16	-1
20	JANKOVICH, MICHAEL	G	0	0-1	0-1	0-0	1	0	1	0	0	1	0	0	2	-7
33	MCCORMACK, DAVID	F	10	5-10	0-0	0-0	2	2	4	4	1	2	1	0	15	0
TEAM							0	1	1	0		0				
TOTALS			83	28-64	10-28	17-20	13	25	38	15	16	10	4	3	198	

Shooting By Period

Period	FG	FG%	3FG	3FG%	FT	FT%
1st Half	11-32	34%	5-18	28%	8-9	89%
2nd Half	17-32	53%	5-10	50%	9-11	82%
Game	28-64	43.8%	10-28	35.7%	17-20	85.0%

Last FG: 2nd-04:37
Largest lead: By 36 at
Technical Fouls: None.

Game Notes:

Officials: Kipp Kissinger, Ray Natili, Keith Kimble
Attendance: 16300

Start Time: 02:00 AM
Conference Game;

Score	1st	2nd	TOT
OSU	25	33	58
KAN	35	48	83

OSU led for 2:27. KAN led for 35:43.
Game was tied for 0:0.
Times tied: 0 Lead Changes: 0

Points from	OSU	KAN
In the Paint	24	28
Off Turns	15	19
2nd Chance	6	14
Fast Break	8	11
Bench	13	24

Official Box Score
Oklahoma St. vs Kansas
First Half Statistics Only
February 25, 2020 at Allen Fieldhouse



Oklahoma St. 25

No.	Player	S	Pts	FG	3FG	FT	OR	DR	TR	PF	A	TO	Blk	Stl	Min
01	LAURENT, JONATHAN	G	0	0-1	0-0	0-0	0	5	5	0	1	1	0	0	14
12	MCGRIFF, CAMERON	F	6	3-8	0-1	0-0	2	0	2	2	0	1	0	0	16
13	LIKEKELE, ISAAC	G	4	1-5	0-0	2-3	0	3	3	1	0	0	2	1	19
14	ANEI, YOR	F	5	2-5	0-0	1-2	2	3	5	1	1	0	3	0	17
21	WATERS, III, LINDY	G	7	3-5	1-3	0-0	0	1	1	2	1	1	0	0	17
00	ANDERSON, III, AVERY	G	0	0-1	0-0	0-0	0	0	0	0	0	0	0	0	5
04	DZIAGWA, THOMAS	G	3	1-5	1-5	0-0	0	0	0	0	0	0	0	0	7
20	BOONE, KEYLAN	G	0	0-0	0-0	0-0	0	0	0	0	0	0	0	0	2
22	BOONE, KALIB	F	0	0-1	0-0	0-0	0	0	0	2	0	0	0	1	3
31	MITCHELL, DEE	G	0	0-0	0-0	0-0	0	0	0	0	0	0	0	0	0
35	ROESSINK, HIDDE	F	0	0-0	0-0	0-0	0	0	0	0	0	0	0	0	0
	TEAM			0-0			1	2	3	0		0			
TOTALS			25	10-31	2-9	3-5	5	14	19	8	3	3	5	2	100

Shooting By Period

Period	FG	FG%	3FG	3FG%	FT	FT%
1st Half	10-31	32%	2-9	22%	3-5	60%
Game	20-52	38.5%	3-12	25.0%	15-19	78.9%

Last FG Half: OSU 2nd-01:11

Kansas 35

No.	Player	S	Pts	FG	3FG	FT	OR	DR	TR	PF	A	TO	Blk	Stl	Min
00	GARRETT, MARCUS	G	0	0-3	0-2	0-0	1	1	2	2	4	0	0	0	17
01	DOTSON, DEVON	G	3	1-8	1-3	0-0	0	2	2	0	2	1	0	0	15
04	MOSS, ISAIAH	G	6	2-5	2-5	0-0	0	4	4	0	0	0	0	0	17
30	AGBAJI, OCHAI	G	7	2-6	1-5	2-2	0	0	0	1	1	1	0	0	16
35	AZUBUIKE, UDOKA	C	8	2-3	0-0	4-4	5	6	11	1	1	1	2	0	15
02	BRAUN, CHRISTIAN	G	4	1-2	1-2	1-1	0	1	1	0	0	0	0	0	10
12	TEAHAN, CHRIS	G	0	0-0	0-0	0-0	0	0	0	0	0	0	0	0	0
13	ENARUNA, TRISTAN	F	1	0-1	0-1	1-2	0	1	1	0	0	0	0	0	6
20	JANKOVICH, MICHAEL	G	0	0-0	0-0	0-0	0	0	0	0	0	0	0	0	0
33	MCCORMACK, DAVID	F	6	3-4	0-0	0-0	2	0	2	1	0	1	1	0	5
	TEAM			0-0			0	1	1	0		0			
TOTALS			35	11-32	5-18	8-9	8	16	24	5	8	4	3	0	100

Shooting By Period

Period	FG	FG%	3FG	3FG%	FT	FT%
1st Half	11-32	34%	5-18	28%	8-9	89%
Game	28-64	43.8%	10-28	35.7%	17-20	85.0%

Last FG Half: KAN 2nd-04:37

Game Notes:

Officials: Kipp Kissinger, Ray Natili, Keith Kimble

Attendance: 16300

Start Time: 02:00 AM

Conference Game;

Score	1st	2nd	TOT
OSU	25	33	58
KAN	35	48	83

Points from (This Period)	OSU	KAN
In the Paint	10	10
Off Turns	9	0
2nd Chance	6	6
Fast Break	4	5
Bench	3	11

Official Play-By-Play
Oklahoma St. vs Kansas
First Half
February 25, 2020 at Allen Fieldhouse



Period 1

Starters:

Oklahoma St.: 1 LAURENT, JONATHAN (G); 12 MCGRIFF, CAMERON (F); 13 LIKEKELE, ISAAC (G); 14 ANEI, YOR (F); 21 WATERS, III, LINDY (G);

Kansas: 0 GARRETT, MARCUS (G); 1 DOTSON, DEVON (G); 4 MOSS, ISALIAH (G); 30 AGBAJI, OCHAI (G); 35 AZUBUIKE, UDOKA (C);

Time	VISITORS: Oklahoma St.	Score	Margin	HOME: Kansas
19:44				MISSED LAYUP by DOTSON, DEVON
19:44	BLOCK by ANEI, YOR			
19:41	REBOUND (DEF) by LIKEKELE, ISAAC			
19:30	MISSED JUMPER by ANEI, YOR			
19:27	REBOUND (OFF) by MCGRIFF, CAMERON			
19:15	GOOD! JUMPER by WATERS, III, LINDY	0-2	V 2	
18:51		3-2	H 1	GOOD! 3PTR by AGBAJI, OCHAI
18:51				ASSIST by AZUBUIKE, UDOKA
18:22	MISSED JUMPER by LAURENT, JONATHAN			
18:22				BLOCK by AZUBUIKE, UDOKA
18:18				REBOUND (DEF) by AZUBUIKE, UDOKA
18:14				MISSED 3PTR by AGBAJI, OCHAI
18:11	REBOUND (DEF) by LIKEKELE, ISAAC			
17:51	TURNOVER by MCGRIFF, CAMERON [PNT]			
17:26				MISSED 3PTR by MOSS, ISALIAH
17:23	REBOUND (DEF) by LIKEKELE, ISAAC			
17:20	MISSED LAYUP by LIKEKELE, ISAAC [PNT]			
17:17				REBOUND (DEF) by MOSS, ISALIAH
17:14				MISSED LAYUP by DOTSON, DEVON
17:14	REBOUND (DEF) by LAURENT, JONATHAN			
17:13	MISSED LAYUP by LIKEKELE, ISAAC [PNT]			
17:13				BLOCK by AZUBUIKE, UDOKA
17:10	REBOUND (OFF) by TEAM			
16:57	GOOD! JUMPER by MCGRIFF, CAMERON	3-4	V 1	
16:57				MISSED 3PTR by DOTSON, DEVON
16:57				REBOUND (OFF) by GARRETT, MARCUS
16:57				TURNOVER by AGBAJI, OCHAI
16:57	STEAL by LIKEKELE, ISAAC			
16:56	GOOD! LAYUP by LIKEKELE, ISAAC [FB]	3-6	V 3	
16:52				FOUL by AGBAJI, OCHAI
16:37	MISSED FT by LIKEKELE, ISAAC [FB]			
16:36				REBOUND (DEF) by GARRETT, MARCUS
15:55				MISSED 3PTR by GARRETT, MARCUS
15:52	REBOUND (DEF) by LAURENT, JONATHAN			
15:48	MISSED 3PTR by WATERS, III, LINDY			
15:45				REBOUND (DEF) by MOSS, ISALIAH
15:36		6-6	T	GOOD! 3PTR by MOSS, ISALIAH
15:36				ASSIST by AGBAJI, OCHAI
15:20	MISSED LAYUP by MCGRIFF, CAMERON [PNT]			
15:17				REBOUND (DEF) by MOSS, ISALIAH
15:12				MISSED 3PTR by AGBAJI, OCHAI
15:09	REBOUND (DEF) by LAURENT, JONATHAN			
14:57	GOOD! LAYUP by MCGRIFF, CAMERON	6-8	V 2	
14:30		9-8	H 1	GOOD! 3PTR by DOTSON, DEVON
14:30				ASSIST by GARRETT, MARCUS
14:13	MISSED JUMPER by MCGRIFF, CAMERON			
14:11	REBOUND (OFF) by ANEI, YOR			
14:10	MISSED LAYUP by ANEI, YOR			
14:08				REBOUND (DEF) by AZUBUIKE, UDOKA
13:54				MISSED 3PTR by MOSS, ISALIAH
13:51	REBOUND (DEF) by ANEI, YOR			
13:21	MISSED 3PTR by MCGRIFF, CAMERON			
13:18				REBOUND (DEF) by AZUBUIKE, UDOKA
13:12				MISSED LAYUP by DOTSON, DEVON
13:12	BLOCK by LIKEKELE, ISAAC			
13:08	REBOUND (DEF) by LAURENT, JONATHAN			
12:53	TURNOVER by LAURENT, JONATHAN			
12:53	TIMEOUT MEDIA			
12:53				SUB OUT: GARRETT, MARCUS
12:53				SUB OUT: AGBAJI, OCHAI
12:53				SUB OUT: AZUBUIKE, UDOKA
12:53				SUB IN: BRAUN, CHRISTIAN
12:53				SUB IN: ENARUNA, TRISTAN
12:53				SUB IN: MCCORMACK, DAVID
12:53	SUB OUT: LAURENT, JONATHAN			
12:53	SUB OUT: ANEI, YOR			
12:53	SUB IN: DZIAGWA, THOMAS			
12:53	SUB IN: BOONE, KALIB			
12:43				TURNOVER by MCCORMACK, DAVID
12:43	STEAL by BOONE, KALIB			

Time	VISITORS: Oklahoma St.	Score	Margin	HOME: Kansas
12:40				FOUL by MCCORMACK, DAVID
12:40	GOOD! FT by LIKEKELE, ISAAC [FB]	9-9	T	
12:40	GOOD! FT by LIKEKELE, ISAAC [FB]	9-10	V 1	
12:25		12-10	H 2	GOOD! 3PTR by BRAUN, CHRISTIAN
12:05	MISSED JUMPER by BOONE, KALIB			
12:02	REBOUND (OFF) by MCGRIFF, CAMERON			
12:00	MISSED 3PTR by DZIAGWA, THOMAS			
11:59				REBOUND (DEADB) by TEAM
11:59	TIMEOUT MEDIA			
11:59				SUB OUT: DOTSON, DEVON
11:59				SUB IN: GARRETT, MARCUS
11:43				MISSED LAYUP by GARRETT, MARCUS
11:38				REBOUND (OFF) by MCCORMACK, DAVID
11:38		14-10	H 4	GOOD! DUNK by MCCORMACK, DAVID
11:21	MISSED 3PTR by DZIAGWA, THOMAS			
11:17				REBOUND (DEF) by ENARUNA, TRISTAN
11:08	FOUL by MCGRIFF, CAMERON [PNT]			
11:08		15-10	H 5	GOOD! FT by ENARUNA, TRISTAN
11:08				SUB OUT: MOSS, ISIAH
11:08				SUB OUT: MCCORMACK, DAVID
11:08				SUB IN: AGBAJI, OCHAI
11:08				SUB IN: AZUBUIKE, UDOKA
11:07				MISSED FT by ENARUNA, TRISTAN
11:06	REBOUND (DEF) by WATERS, III,LINDY			
10:40	MISSED 3PTR by DZIAGWA, THOMAS			
10:37				REBOUND (DEF) by AZUBUIKE, UDOKA
10:30				MISSED DUNK by AZUBUIKE, UDOKA
10:28				REBOUND (OFF) by AZUBUIKE, UDOKA
10:28	FOUL by BOONE, KALIB [PNT]			
10:28	SUB OUT: DZIAGWA, THOMAS			
10:28	SUB IN: ANDERSON, III,AVERY			
10:19	FOUL by BOONE, KALIB			
10:19		16-10	H 6	GOOD! FT by AZUBUIKE, UDOKA
10:19	SUB OUT: BOONE, KALIB			
10:19	SUB IN: ANEI, YOR			
10:19		17-10	H 7	GOOD! FT by AZUBUIKE, UDOKA
09:55	GOOD! JUMPER by WATERS, III,LINDY	17-12	H 5	
09:30				MISSED 3PTR by GARRETT, MARCUS
09:26	REBOUND (DEF) by ANEI, YOR			
09:03	MISSED LAYUP by LIKEKELE, ISAAC			
08:55	REBOUND (OFF) by ANEI, YOR			
08:55	GOOD! LAYUP by ANEI, YOR	17-14	H 3	
08:45	FOUL by WATERS, III,LINDY [PNT]			
08:45		18-14	H 4	GOOD! FT by AZUBUIKE, UDOKA
08:45				SUB OUT: ENARUNA, TRISTAN
08:45				SUB IN: DOTSON, DEVON
08:45	SUB OUT: MCGRIFF, CAMERON			
08:45	SUB OUT: ANEI, YOR			
08:45	SUB IN: LAURENT, JONATHAN			
08:45	SUB IN: BOONE, KEYLAN			
08:45		19-14	H 5	GOOD! FT by AZUBUIKE, UDOKA
08:40	SUB OUT: WATERS, III,LINDY			
08:40	SUB IN: ANEI, YOR			
08:37	MISSED JUMPER by ANDERSON, III,AVERY			
08:33				REBOUND (DEF) by DOTSON, DEVON
08:09				MISSED 3PTR by DOTSON, DEVON
08:06				REBOUND (OFF) by AZUBUIKE, UDOKA
08:01		21-14	H 7	GOOD! JUMPER by AZUBUIKE, UDOKA
07:44				FOUL by AZUBUIKE, UDOKA [PNT]
07:44	TIMEOUT MEDIA			
07:44				SUB OUT: GARRETT, MARCUS
07:44				SUB OUT: AZUBUIKE, UDOKA
07:44				SUB IN: MOSS, ISIAH
07:44				SUB IN: MCCORMACK, DAVID
07:44	SUB OUT: LIKEKELE, ISAAC			
07:44	SUB IN: WATERS, III,LINDY			
07:44	MISSED FT by ANEI, YOR			
07:44	REBOUND (DEADB) by TEAM			
07:44	GOOD! FT by ANEI, YOR	21-15	H 6	
07:25		23-15	H 8	GOOD! LAYUP by MCCORMACK, DAVID
07:25				ASSIST by GARRETT, MARCUS
07:11				SUB OUT: BRAUN, CHRISTIAN
07:11				SUB IN: GARRETT, MARCUS
06:57	MISSED JUMPER by ANEI, YOR			
06:53				REBOUND (DEF) by DOTSON, DEVON
06:48				TURNOVER by DOTSON, DEVON
06:48	SUB OUT: ANDERSON, III,AVERY			
06:48	SUB OUT: BOONE, KEYLAN			
06:48	SUB IN: MCGRIFF, CAMERON			
06:48	SUB IN: LIKEKELE, ISAAC			

Time	VISITORS: Oklahoma St.	Score	Margin	HOME: Kansas
06:24	GOOD! LAYUP by ANEI, YOR	23-17	H 6	
06:24	ASSIST by LAURENT, JONATHAN			
06:08		25-17	H 8	GOOD! JUMPER by MCCORMACK, DAVID
06:08				ASSIST by DOTSON, DEVON
05:58	MISSED LAYUP by LIKEKELE, ISAAC [PNT]			
05:58				BLOCK by MCCORMACK, DAVID
05:54				REBOUND (DEF) by MOSS, ISAIAH
05:52		27-17	H 10	GOOD! JUMPER by AGBAJI, OCHAI [FB]
05:52				ASSIST by DOTSON, DEVON
05:47	TIMEOUT 30SEC			
05:30				FOUL by GARRETT, MARCUS
05:21	MISSED 3PTR by WATERS, III,LINDY			
05:19				REBOUND (DEF) by TEAM
05:19	SUB OUT: WATERS, III,LINDY			
05:19	SUB IN: DZIAGWA, THOMAS			
05:10				MISSED LAYUP by DOTSON, DEVON
05:10	BLOCK by ANEI, YOR			
05:07				REBOUND (OFF) by MCCORMACK, DAVID
04:48				MISSED LAYUP by MCCORMACK, DAVID
04:48	BLOCK by ANEI, YOR			
04:48	REBOUND (DEF) by ANEI, YOR			
04:41	GOOD! DUNK by MCGRIFF, CAMERON	27-19	H 8	
04:41	ASSIST by ANEI, YOR			
04:29				MISSED JUMPER by DOTSON, DEVON [PNT]
04:28	REBOUND (DEF) by TEAM			
04:28				SUB OUT: DOTSON, DEVON
04:28				SUB OUT: AGBAJI, OCHAI
04:28				SUB OUT: MCCORMACK, DAVID
04:28				SUB IN: BRAUN, CHRISTIAN
04:28				SUB IN: ENARUNA, TRISTAN
04:28				SUB IN: AZUBUIKE, UDOKA
04:06	MISSED LAYUP by MCGRIFF, CAMERON			
04:03				REBOUND (DEF) by BRAUN, CHRISTIAN
04:01		30-19	H 11	GOOD! 3PTR by MOSS, ISAIAH [FB]
04:01				ASSIST by GARRETT, MARCUS
03:46	TIMEOUT MEDIA			
03:46	SUB OUT: LAURENT, JONATHAN			
03:46	SUB IN: WATERS, III,LINDY			
03:30	MISSED JUMPER by MCGRIFF, CAMERON			
03:27				REBOUND (DEF) by AZUBUIKE, UDOKA
03:00				MISSED 3PTR by MOSS, ISAIAH
02:59				REBOUND (OFF) by AZUBUIKE, UDOKA
02:59	FOUL by LIKEKELE, ISAAC [PNT]			
02:51				MISSED 3PTR by ENARUNA, TRISTAN
02:50				REBOUND (OFF) by AZUBUIKE, UDOKA
02:50	FOUL by ANEI, YOR			
02:44				MISSED 3PTR by BRAUN, CHRISTIAN
02:40	REBOUND (DEF) by TEAM			
02:27	GOOD! 3PTR by DZIAGWA, THOMAS	30-22	H 8	
02:27	ASSIST by WATERS, III,LINDY			
02:14	FOUL by MCGRIFF, CAMERON			
02:14				SUB OUT: ENARUNA, TRISTAN
02:14				SUB IN: AGBAJI, OCHAI
02:14		31-22	H 9	GOOD! FT by BRAUN, CHRISTIAN
02:14				TURNOVER by AZUBUIKE, UDOKA
02:14				SUB OUT: BRAUN, CHRISTIAN
02:14				SUB IN: DOTSON, DEVON
02:14	SUB OUT: MCGRIFF, CAMERON			
02:14	SUB IN: LAURENT, JONATHAN			
02:02	GOOD! 3PTR by WATERS, III,LINDY	31-25	H 6	
02:02				TIMEOUT 30SEC
01:45		33-25	H 8	GOOD! DUNK by AZUBUIKE, UDOKA
01:45				ASSIST by GARRETT, MARCUS
01:34				FOUL by GARRETT, MARCUS [PNT]
01:34				SUB OUT: GARRETT, MARCUS
01:34				SUB IN: BRAUN, CHRISTIAN
01:18	MISSED 3PTR by DZIAGWA, THOMAS			
01:15				REBOUND (DEF) by AZUBUIKE, UDOKA
01:08	FOUL by WATERS, III,LINDY			
01:08	SUB OUT: DZIAGWA, THOMAS			
01:08	SUB IN: ANDERSON, III,AVERY			
01:08		34-25	H 9	GOOD! FT by AGBAJI, OCHAI
01:08		35-25	H 10	GOOD! FT by AGBAJI, OCHAI
00:35	TURNOVER by WATERS, III,LINDY			
00:05				MISSED 3PTR by AGBAJI, OCHAI
00:02				REBOUND (OFF) by AZUBUIKE, UDOKA
00:02	SUB OUT: WATERS, III,LINDY			
00:02	SUB IN: ROESSINK, HIDDE			
00:01				MISSED 3PTR by AGBAJI, OCHAI
00:01	BLOCK by LIKEKELE, ISAAC			

Time	VISITORS: Oklahoma St.	Score	Margin	HOME: Kansas
00:00	REBOUND (DEF) by LAURENT, JONATHAN			

Oklahoma St. 25, Kansas 35

Points from (This Period)	OSU	KAN
In the Paint	10	10
Off Turns	9	0
2nd Chance	6	6
Fast Break	4	5
Bench	3	11

Official Box Score
Oklahoma St. vs Kansas
Second Half Statistics Only
February 25, 2020 at Allen Fieldhouse



Oklahoma St. 33

No.	Player	S	Pts	FG	3FG	FT	OR	DR	TR	PF	A	TO	Blk	Stl	Min
01	LAURENT, JONATHAN	G	0	0-1	0-0	0-0	1	2	3	2	0	1	1	0	10
12	MCGRIFF, CAMERON	F	10	3-6	1-2	3-4	1	2	3	2	0	2	1	0	15
13	LIKEKELE, ISAAC	G	7	2-3	0-0	3-4	0	3	3	2	0	3	0	0	16
14	ANEI, YOR	F	2	1-4	0-0	0-0	0	0	0	0	1	2	1	1	11
21	WATERS, III, LINDY	G	4	1-2	0-0	2-2	0	1	1	1	0	0	0	1	15
00	ANDERSON, III, AVERY	G	2	1-1	0-0	0-0	0	1	1	1	1	2	0	0	7
04	DZIAGWA, THOMAS	G	0	0-1	0-1	0-0	0	0	0	1	0	0	0	0	4
20	BOONE, KEYLAN	G	2	1-1	0-0	0-0	0	1	1	0	0	0	1	0	5
22	BOONE, KALIB	F	6	1-2	0-0	4-4	0	1	1	2	2	0	0	0	8
31	MITCHELL, DEE	G	0	0-0	0-0	0-0	0	0	0	0	1	0	0	0	5
35	ROESSINK, HIDDE	F	0	0-0	0-0	0-0	0	0	0	0	0	0	0	0	2
	TEAM			0-0			0	0	0	0		0			
TOTALS			33	10-21	1-3	12-14	2	11	13	11	5	10	4	2	98

Shooting By Period

Period	FG	FG%	3FG	3FG%	FT	FT%
2nd Half	10-21	48%	1-3	33%	12-14	86%
Game	20-52	38.5%	3-12	25.0%	15-19	78.9%

Last FG Half: OSU -

Kansas 48

No.	Player	S	Pts	FG	3FG	FT	OR	DR	TR	PF	A	TO	Blk	Stl	Min
00	GARRETT, MARCUS	G	5	2-5	0-1	1-1	0	1	1	0	3	1	0	1	14
01	DOTSON, DEVON	G	8	2-4	0-1	4-5	0	3	3	2	2	1	0	1	13
04	MOSS, ISIAH	G	3	1-2	1-1	0-0	0	0	0	2	1	0	0	1	11
30	AGBAJI, OCHAI	G	8	3-3	1-1	1-1	0	0	0	0	0	0	0	0	11
35	AZUBUIKE, UDOKA	C	11	4-4	0-0	3-4	3	2	5	0	1	1	1	0	12
02	BRAUN, CHRISTIAN	G	6	2-3	2-2	0-0	0	1	1	2	0	1	0	0	12
12	TEAHAN, CHRIS	G	0	0-1	0-1	0-0	0	0	0	0	0	0	0	0	2
13	ENARUNA, TRISTAN	F	3	1-3	1-2	0-0	1	0	1	1	0	0	0	0	10
20	JANKOVICH, MICHAEL	G	0	0-1	0-1	0-0	1	0	1	0	0	1	0	0	2
33	MCCORMACK, DAVID	F	4	2-6	0-0	0-0	0	2	2	3	1	1	0	0	10
	TEAM			0-0			0	0	0	0		0			
TOTALS			48	17-32	5-10	9-11	5	9	14	10	8	6	1	3	98

Shooting By Period

Period	FG	FG%	3FG	3FG%	FT	FT%
2nd Half	17-32	53%	5-10	50%	9-11	82%
Game	28-64	43.8%	10-28	35.7%	17-20	85.0%

Last FG Half: KAN -

Game Notes:

Officials: **Kipp Kissinger, Ray Natili, Keith Kimble**
Attendance: **16300**

Start Time: **02:00 AM**
Conference Game;

Score	1st	2nd	TOT
OSU	25	33	58
KAN	35	48	83

Points from (This Period)	OSU	KAN
In the Paint	14	18
Off Turns	6	19
2nd Chance	0	8
Fast Break	4	6
Bench	10	13

Official Stay-By-Play
Oklahoma St. vs Kansas
Second Half
February 25, 2020 at Allen Fieldhouse



Period 2

Starters:

Oklahoma St.: 1 LAURENT, JONATHAN (G); 12 MCGRIFF, CAMERON (F); 13 LIKEKELE, ISAAC (G); 14 ANEI, YOR (F); 21 WATERS, III, LINDY (G);
Kansas: 0 GARRETT, MARCUS (G); 1 DOTSON, DEVON (G); 4 MOSS, ISIAIAH (G); 30 AGBAJI, OCHAI (G); 35 AZUBUIKE, UDOKA (C);

Time	VISITORS: Oklahoma St.	Score	Margin	HOME: Kansas
20:00				SUB OUT: BRAUN, CHRISTIAN
20:00				SUB IN: GARRETT, MARCUS
20:00	SUB OUT: ANDERSON, III, AVERY			
20:00	SUB OUT: ROESSINK, HIDDE			
20:00	SUB IN: MCGRIFF, CAMERON			
20:00	SUB IN: WATERS, III, LINDY			
19:48				MISSED LAYUP by GARRETT, MARCUS
19:45	REBOUND (DEF) by WATERS, III, LINDY			
19:36	GOOD! LAYUP by WATERS, III, LINDY	35-27	H 8	
19:20				MISSED 3PTR by GARRETT, MARCUS
19:17	REBOUND (DEF) by LAURENT, JONATHAN			
19:04				FOUL by MOSS, ISIAIAH [PNT]
19:04	MISSED FT by LIKEKELE, ISAAC			
19:04	REBOUND (DEADB) by TEAM			
19:04	GOOD! FT by LIKEKELE, ISAAC	35-28	H 7	
18:52				MISSED LAYUP by DOTSON, DEVON
18:52	BLOCK by ANEI, YOR			
18:48	REBOUND (DEF) by LIKEKELE, ISAAC			
18:42	MISSED LAYUP by LAURENT, JONATHAN			
18:42				BLOCK by AZUBUIKE, UDOKA
18:38				REBOUND (DEF) by DOTSON, DEVON
18:26				MISSED 3PTR by DOTSON, DEVON
18:23				REBOUND (OFF) by AZUBUIKE, UDOKA
18:22		37-28	H 9	GOOD! DUNK by AZUBUIKE, UDOKA
17:57	TURNOVER by ANEI, YOR			
17:37		39-28	H 11	GOOD! JUMPER by AGBAJI, OCHAI
17:37	FOUL by LAURENT, JONATHAN			
17:37		40-28	H 12	GOOD! FT by AGBAJI, OCHAI
17:05	GOOD! LAYUP by LIKEKELE, ISAAC	40-30	H 10	
17:05	ASSIST by ANEI, YOR			
16:43	FOUL by LAURENT, JONATHAN [PNT]			
16:27		43-30	H 13	GOOD! 3PTR by AGBAJI, OCHAI
16:01	MISSED by ANEI, YOR [PNT]			
15:58	REBOUND (OFF) by LAURENT, JONATHAN			
15:57	TURNOVER by LAURENT, JONATHAN [PNT]			
15:57				STEAL by MOSS, ISIAIAH
15:55	FOUL by WATERS, III, LINDY [PNT]			
15:55	TIMEOUT MEDIA			
15:55	SUB OUT: LAURENT, JONATHAN			
15:55	SUB IN: DZIAGWA, THOMAS			
15:40				TURNOVER by GARRETT, MARCUS
15:40	STEAL by WATERS, III, LINDY			
15:32	FOUL by LIKEKELE, ISAAC			
15:32	TURNOVER by LIKEKELE, ISAAC			
15:07		46-30	H 16	GOOD! 3PTR by MOSS, ISIAIAH
15:07				ASSIST by GARRETT, MARCUS
14:39	MISSED JUMPER by WATERS, III, LINDY			
14:37	REBOUND (OFF) by MCGRIFF, CAMERON			
14:37				FOUL by DOTSON, DEVON [PNT]
14:37	FOUL (TECH) by MCGRIFF, CAMERON			
14:37	TURNOVER by MCGRIFF, CAMERON			
14:37		47-30	H 17	GOOD! FT by DOTSON, DEVON
14:37		48-30	H 18	GOOD! FT by DOTSON, DEVON
14:37	TURNOVER by MCGRIFF, CAMERON			
14:37				TURNOVER by AZUBUIKE, UDOKA
14:37	TURNOVER by LIKEKELE, ISAAC			
14:37				STEAL by DOTSON, DEVON
14:36		50-30	H 20	GOOD! LAYUP by DOTSON, DEVON [FB]
14:36				ASSIST by GARRETT, MARCUS
14:31	FOUL by DZIAGWA, THOMAS			
14:12	SUB OUT: DZIAGWA, THOMAS			
14:12	SUB OUT: ANEI, YOR			
14:12	SUB IN: ANDERSON, III, AVERY			
14:12	SUB IN: BOONE, KALIB			
14:06		51-30	H 21	GOOD! FT by DOTSON, DEVON [FB]
13:53	GOOD! JUMPER by MCGRIFF, CAMERON [PNT]	51-32	H 19	
13:53	ASSIST by BOONE, KALIB			
13:52	TIMEOUT 30SEC			
13:38		53-32	H 21	GOOD! JUMPER by AGBAJI, OCHAI
13:16	TURNOVER by ANDERSON, III, AVERY			

Time	VISITORS: Oklahoma St.	Score	Margin	HOME: Kansas
12:59		55-32	H 23	GOOD! LAYUP by DOTSON, DEVON
12:45	TURNOVER by ANDERSON, III,AVERY			
12:45				STEAL by GARRETT, MARCUS
12:40		57-32	H 25	GOOD! LAYUP by GARRETT, MARCUS [FB]
12:38	FOUL by MCGRIFF, CAMERON			
12:38	SUB OUT: MCGRIFF, CAMERON			
12:38	SUB OUT: ANDERSON, III,AVERY			
12:38	SUB IN: LAURENT, JONATHAN			
12:38	SUB IN: DZIAGWA, THOMAS			
12:38		58-32	H 26	GOOD! FT by GARRETT, MARCUS [FB]
12:38				SUB OUT: GARRETT, MARCUS
12:38				SUB IN: BRAUN, CHRISTIAN
12:25	MISSED JUMPER by LIKEKELE, ISAAC [PNT]			
12:22				REBOUND (DEF) by AZUBUIKE, UDOKA
12:05		60-32	H 28	GOOD! JUMPER by AZUBUIKE, UDOKA
12:05				ASSIST by MOSS, ISAIAH
11:50				FOUL by MOSS, ISAIAH [PNT]
11:50	TIMEOUT MEDIA			
11:50				SUB OUT: DOTSON, DEVON
11:50				SUB IN: GARRETT, MARCUS
11:50	GOOD! FT by BOONE, KALIB	60-33	H 27	
11:50	GOOD! FT by BOONE, KALIB	60-34	H 26	
11:27				MISSED LAYUP by MOSS, ISAIAH [PNT]
11:24				REBOUND (OFF) by AZUBUIKE, UDOKA
11:24		62-34	H 28	GOOD! LAYUP by AZUBUIKE, UDOKA
11:24	FOUL by BOONE, KALIB			
11:24		63-34	H 29	GOOD! FT by AZUBUIKE, UDOKA
11:10	MISSED 3PTR by DZIAGWA, THOMAS			
11:07				REBOUND (DEF) by BRAUN, CHRISTIAN
10:49	FOUL by BOONE, KALIB [PNT]			
10:49				MISSED FT by AZUBUIKE, UDOKA
10:49				REBOUND (DEADB) by TEAM
10:49	SUB OUT: BOONE, KALIB			
10:49	SUB IN: ANEI, YOR			
10:49		64-34	H 30	GOOD! FT by AZUBUIKE, UDOKA
10:49				SUB OUT: AZUBUIKE, UDOKA
10:49				SUB IN: MCCORMACK, DAVID
10:27				FOUL by BRAUN, CHRISTIAN
10:27	GOOD! FT by WATERS, III,LINDY	64-35	H 29	
10:27				SUB OUT: AGBAJI, OCHAI
10:27				SUB IN: ENARUNA, TRISTAN
10:27	GOOD! FT by WATERS, III,LINDY	64-36	H 28	
10:27	SUB OUT: DZIAGWA, THOMAS			
10:27	SUB IN: MCGRIFF, CAMERON			
10:13		66-36	H 30	GOOD! JUMPER by GARRETT, MARCUS [PNT]
09:50	GOOD! by ANEI, YOR [PNT]	66-38	H 28	
09:27		69-38	H 31	GOOD! 3PTR by BRAUN, CHRISTIAN
09:27				ASSIST by GARRETT, MARCUS
09:12	MISSED JUMPER by MCGRIFF, CAMERON [PNT]			
09:10				REBOUND (DEF) by MCCORMACK, DAVID
09:03				MISSED JUMPER by MCCORMACK, DAVID [PNT]
09:03	BLOCK by LAURENT, JONATHAN			
09:03	REBOUND (DEF) by LAURENT, JONATHAN			
09:03				SUB OUT: MOSS, ISAIAH
09:03				SUB IN: DOTSON, DEVON
08:48	MISSED JUMPER by ANEI, YOR			
08:45				REBOUND (DEF) by DOTSON, DEVON
08:23				TURNOVER by DOTSON, DEVON
08:23	STEAL by ANEI, YOR			
08:23				FOUL by DOTSON, DEVON
08:06				FOUL by ENARUNA, TRISTAN [PNT]
08:06	GOOD! FT by LIKEKELE, ISAAC	69-39	H 30	
08:06	GOOD! FT by LIKEKELE, ISAAC	69-40	H 29	
08:06	SUB OUT: LIKEKELE, ISAAC			
08:06	SUB IN: ANDERSON, III,AVERY			
07:44		71-40	H 31	GOOD! JUMPER by MCCORMACK, DAVID
07:27	TURNOVER by ANEI, YOR			
07:27	TIMEOUT MEDIA			
07:07		74-40	H 34	GOOD! 3PTR by ENARUNA, TRISTAN
07:07				ASSIST by MCCORMACK, DAVID
06:53	MISSED by ANEI, YOR [PNT]			
06:49				REBOUND (DEF) by GARRETT, MARCUS
06:44				FOUL by MCCORMACK, DAVID
06:44				TURNOVER by MCCORMACK, DAVID
06:44				SUB OUT: GARRETT, MARCUS
06:44				SUB IN: AZUBUIKE, UDOKA
06:30				FOUL by MCCORMACK, DAVID
06:30	GOOD! FT by MCGRIFF, CAMERON	74-41	H 33	
06:30	GOOD! FT by MCGRIFF, CAMERON	74-42	H 32	
06:30	SUB OUT: LAURENT, JONATHAN			

Time	VISITORS: Oklahoma St.	Score	Margin	HOME: Kansas
06:30	SUB IN: LIKEKELE, ISAAC			
06:17				MISSED LAYUP by ENARUNA, TRISTAN
06:17	BLOCK by MCGRIFF, CAMERON			
06:13	REBOUND (DEF) by MCGRIFF, CAMERON			
06:09	GOOD! JUMPER by MCGRIFF, CAMERON	74-44	H 30	
05:48				MISSED 3PTR by ENARUNA, TRISTAN
05:45				REBOUND (OFF) by AZUBUIKE, UDOKA
05:43		77-44	H 33	GOOD! 3PTR by BRAUN, CHRISTIAN
05:43				ASSIST by AZUBUIKE, UDOKA
05:30	MISSED JUMPER by MCGRIFF, CAMERON			
05:27				REBOUND (DEF) by AZUBUIKE, UDOKA
05:21	FOUL by ANDERSON, III, AVERY			
05:21		78-44	H 34	GOOD! FT by DOTSON, DEVON
05:21	SUB OUT: ANEI, YOR			
05:21	SUB OUT: WATERS, III, LINDY			
05:21	SUB IN: BOONE, KEYLAN			
05:21	SUB IN: BOONE, KALIB			
05:21				MISSED FT by DOTSON, DEVON
05:21	REBOUND (DEF) by MCGRIFF, CAMERON			
05:17	GOOD! 3PTR by MCGRIFF, CAMERON	78-47	H 31	
05:17	ASSIST by ANDERSON, III, AVERY			
05:00		80-47	H 33	GOOD! JUMPER by AZUBUIKE, UDOKA
05:00				ASSIST by DOTSON, DEVON
05:00	FOUL by LIKEKELE, ISAAC			
05:00	SUB OUT: ANDERSON, III, AVERY			
05:00	SUB IN: MITCHELL, DEE			
05:00		81-47	H 34	GOOD! FT by AZUBUIKE, UDOKA
04:50	MISSED 3PTR by MCGRIFF, CAMERON			
04:47				REBOUND (DEF) by DOTSON, DEVON
04:37		83-47	H 36	GOOD! LAYUP by MCCORMACK, DAVID
04:37				ASSIST by DOTSON, DEVON
04:25	TURNOVER by LIKEKELE, ISAAC			
04:25	TIMEOUT 30SEC			
04:21				SUB OUT: DOTSON, DEVON
04:21				SUB OUT: AZUBUIKE, UDOKA
04:21				SUB IN: GARRETT, MARCUS
04:21				SUB IN: AGBAJI, OCHAI
04:06				MISSED LAYUP by BRAUN, CHRISTIAN
04:02				REBOUND (OFF) by ENARUNA, TRISTAN
03:55				MISSED JUMPER by MCCORMACK, DAVID
03:52	REBOUND (DEF) by BOONE, KALIB			
03:39	GOOD! LAYUP by BOONE, KEYLAN	83-49	H 34	
03:39	ASSIST by BOONE, KALIB			
03:22				MISSED LAYUP by GARRETT, MARCUS [PNT]
03:19	REBOUND (DEF) by LIKEKELE, ISAAC			
03:14	GOOD! JUMPER by LIKEKELE, ISAAC [FB]	83-51	H 32	
02:50				MISSED JUMPER by MCCORMACK, DAVID [PNT]
02:47	REBOUND (DEF) by LIKEKELE, ISAAC			
02:34				FOUL by MCCORMACK, DAVID [PNT]
02:34	MISSED FT by MCGRIFF, CAMERON			
02:34	REBOUND (DEADB) by TEAM			
02:34				SUB OUT: GARRETT, MARCUS
02:34				SUB OUT: AGBAJI, OCHAI
02:34				SUB IN: TEAHAN, CHRIS
02:34				SUB IN: JANKOVICH, MICHAEL
02:34	SUB OUT: LIKEKELE, ISAAC			
02:34	SUB IN: ANDERSON, III, AVERY			
02:34	GOOD! FT by MCGRIFF, CAMERON	83-52	H 31	
02:26				TURNOVER by BRAUN, CHRISTIAN
02:26	SUB OUT: MCGRIFF, CAMERON			
02:26	SUB IN: ROESSINK, HIDE			
02:16				FOUL by BRAUN, CHRISTIAN [PNT]
02:16	GOOD! FT by BOONE, KALIB	83-53	H 30	
02:16	GOOD! FT by BOONE, KALIB	83-54	H 29	
01:55				MISSED 3PTR by TEAHAN, CHRIS
01:51	REBOUND (DEF) by BOONE, KEYLAN			
01:44	GOOD! DUNK by BOONE, KALIB	83-56	H 27	
01:44	ASSIST by MITCHELL, DEE			
01:29				MISSED 3PTR by JANKOVICH, MICHAEL
01:29	BLOCK by BOONE, KEYLAN			
01:25				REBOUND (OFF) by JANKOVICH, MICHAEL
01:19				MISSED JUMPER by MCCORMACK, DAVID [PNT]
01:15	REBOUND (DEF) by ANDERSON, III, AVERY			
01:11	GOOD! LAYUP by ANDERSON, III, AVERY [FB]	83-58	H 25	
00:50				TURNOVER by JANKOVICH, MICHAEL
00:28	MISSED LAYUP by BOONE, KALIB [PNT]			
00:25				REBOUND (DEF) by MCCORMACK, DAVID

Oklahoma St. 58, Kansas 83

Points from (This Period)	OSU	KAN
In the Paint	14	18
Off Turns	6	19
2nd Chance	0	8
Fast Break	4	6
Bench	10	13

Official Scoring/Possession Reference Chart
Oklahoma St. vs Kansas
Period 1
February 25, 2020 at Allen Fieldhouse



Period 1

Starters:

Oklahoma St.: 1 LAURENT, JONATHAN (G); 12 MCGRIFF, CAMERON (F); 13 LIKEKELE, ISAAC (G); 14 ANEI, YOR (F); 21 WATERS, III, LINDY (G);
Kansas: 0 GARRETT, MARCUS (G); 1 DOTSON, DEVON (G); 4 MOSS, ISAIAH (G); 30 AGBAJI, OCHAI (G); 35 AZUBUIKE, UDOKA (C);

Time	VISITORS: Oklahoma St.	Score	Margin	HOME: Kansas
19:15	GOOD! JUMPER by WATERS, III, LINDY	0-2	V 2	
18:51		3-2	H 1	GOOD! 3PTR by AGBAJI, OCHAI
16:57	GOOD! JUMPER by MCGRIFF, CAMERON	3-4	V 1	
16:56	GOOD! LAYUP by LIKEKELE, ISAAC [FB]	3-6	V 3	
15:36		6-6	T	GOOD! 3PTR by MOSS, ISAIAH
14:57	GOOD! LAYUP by MCGRIFF, CAMERON	6-8	V 2	
14:30		9-8	H 1	GOOD! 3PTR by DOTSON, DEVON
12:40	GOOD! FT by LIKEKELE, ISAAC [FB]	9-9	T	
12:40	GOOD! FT by LIKEKELE, ISAAC [FB]	9-10	V 1	
12:25		12-10	H 2	GOOD! 3PTR by BRAUN, CHRISTIAN
11:38		14-10	H 4	GOOD! DUNK by MCCORMACK, DAVID
11:08		15-10	H 5	GOOD! FT by ENARUNA, TRISTAN
10:19		16-10	H 6	GOOD! FT by AZUBUIKE, UDOKA
10:19		17-10	H 7	GOOD! FT by AZUBUIKE, UDOKA
09:55	GOOD! JUMPER by WATERS, III, LINDY	17-12	H 5	
08:55	GOOD! LAYUP by ANEI, YOR	17-14	H 3	
08:45		18-14	H 4	GOOD! FT by AZUBUIKE, UDOKA
08:45		19-14	H 5	GOOD! FT by AZUBUIKE, UDOKA
08:01		21-14	H 7	GOOD! JUMPER by AZUBUIKE, UDOKA
07:44	GOOD! FT by ANEI, YOR	21-15	H 6	
07:25		23-15	H 8	GOOD! LAYUP by MCCORMACK, DAVID
06:24	GOOD! LAYUP by ANEI, YOR	23-17	H 6	
06:08		25-17	H 8	GOOD! JUMPER by MCCORMACK, DAVID
05:52		27-17	H 10	GOOD! JUMPER by AGBAJI, OCHAI [FB]
04:41	GOOD! DUNK by MCGRIFF, CAMERON	27-19	H 8	
04:01		30-19	H 11	GOOD! 3PTR by MOSS, ISAIAH [FB]
02:27	GOOD! 3PTR by DZIAGWA, THOMAS	30-22	H 8	
02:14		31-22	H 9	GOOD! FT by BRAUN, CHRISTIAN
02:02	GOOD! 3PTR by WATERS, III, LINDY	31-25	H 6	
01:45		33-25	H 8	GOOD! DUNK by AZUBUIKE, UDOKA
01:08		34-25	H 9	GOOD! FT by AGBAJI, OCHAI
01:08		35-25	H 10	GOOD! FT by AGBAJI, OCHAI

Oklahoma St. 25, Kansas 35

Official Scoring/Possession Reference Chart
Oklahoma St. vs Kansas
Period 2
February 25, 2020 at Allen Fieldhouse



Period 2

Starters:

Oklahoma St.: 1 LAURENT, JONATHAN (G); 12 MCGRIFF, CAMERON (F); 13 LIKEKELE, ISAAC (G); 14 ANEI, YOR (F); 21 WATERS, III, LINDY (G);
Kansas: 0 GARRETT, MARCUS (G); 1 DOTSON, DEVON (G); 4 MOSS, ISAIAH (G); 30 AGBAJI, OCHAI (G); 35 AZUBUIKE, UDOKA (C);

Time	VISITORS: Oklahoma St.	Score	Margin	HOME: Kansas
19:36	GOOD! LAYUP by WATERS, III, LINDY	35-27	H 8	
19:04	GOOD! FT by LIKEKELE, ISAAC	35-28	H 7	
18:22		37-28	H 9	GOOD! DUNK by AZUBUIKE, UDOKA
17:37		39-28	H 11	GOOD! JUMPER by AGBAJI, OCHAI
17:37		40-28	H 12	GOOD! FT by AGBAJI, OCHAI
17:05	GOOD! LAYUP by LIKEKELE, ISAAC	40-30	H 10	
16:27		43-30	H 13	GOOD! 3PTR by AGBAJI, OCHAI
15:07		46-30	H 16	GOOD! 3PTR by MOSS, ISAIAH
14:37		47-30	H 17	GOOD! FT by DOTSON, DEVON
14:37		48-30	H 18	GOOD! FT by DOTSON, DEVON
14:36		50-30	H 20	GOOD! LAYUP by DOTSON, DEVON [FB]
14:06		51-30	H 21	GOOD! FT by DOTSON, DEVON [FB]
13:53	GOOD! JUMPER by MCGRIFF, CAMERON [PNT]	51-32	H 19	
13:38		53-32	H 21	GOOD! JUMPER by AGBAJI, OCHAI
12:59		55-32	H 23	GOOD! LAYUP by DOTSON, DEVON
12:40		57-32	H 25	GOOD! LAYUP by GARRETT, MARCUS [FB]
12:38		58-32	H 26	GOOD! FT by GARRETT, MARCUS [FB]
12:05		60-32	H 28	GOOD! JUMPER by AZUBUIKE, UDOKA
11:50	GOOD! FT by BOONE, KALIB	60-33	H 27	
11:50	GOOD! FT by BOONE, KALIB	60-34	H 26	
11:24		62-34	H 28	GOOD! LAYUP by AZUBUIKE, UDOKA
11:24		63-34	H 29	GOOD! FT by AZUBUIKE, UDOKA
10:49		64-34	H 30	GOOD! FT by AZUBUIKE, UDOKA
10:27	GOOD! FT by WATERS, III, LINDY	64-35	H 29	
10:27	GOOD! FT by WATERS, III, LINDY	64-36	H 28	
10:13		66-36	H 30	GOOD! JUMPER by GARRETT, MARCUS [PNT]
09:50	GOOD! by ANEI, YOR [PNT]	66-38	H 28	
09:27		69-38	H 31	GOOD! 3PTR by BRAUN, CHRISTIAN
08:06	GOOD! FT by LIKEKELE, ISAAC	69-39	H 30	
08:06	GOOD! FT by LIKEKELE, ISAAC	69-40	H 29	
07:44		71-40	H 31	GOOD! JUMPER by MCCORMACK, DAVID
07:07		74-40	H 34	GOOD! 3PTR by ENARUNA, TRISTAN
06:30	GOOD! FT by MCGRIFF, CAMERON	74-41	H 33	
06:30	GOOD! FT by MCGRIFF, CAMERON	74-42	H 32	
06:09	GOOD! JUMPER by MCGRIFF, CAMERON	74-44	H 30	
05:43		77-44	H 33	GOOD! 3PTR by BRAUN, CHRISTIAN
05:21		78-44	H 34	GOOD! FT by DOTSON, DEVON
05:17	GOOD! 3PTR by MCGRIFF, CAMERON	78-47	H 31	
05:00		80-47	H 33	GOOD! JUMPER by AZUBUIKE, UDOKA
05:00		81-47	H 34	GOOD! FT by AZUBUIKE, UDOKA
04:37		83-47	H 36	GOOD! LAYUP by MCCORMACK, DAVID
03:39	GOOD! LAYUP by BOONE, KEYLAN	83-49	H 34	
03:14	GOOD! JUMPER by LIKEKELE, ISAAC [FB]	83-51	H 32	
02:34	GOOD! FT by MCGRIFF, CAMERON	83-52	H 31	
02:16	GOOD! FT by BOONE, KALIB	83-53	H 30	
02:16	GOOD! FT by BOONE, KALIB	83-54	H 29	
01:44	GOOD! DUNK by BOONE, KALIB	83-56	H 27	
01:11	GOOD! LAYUP by ANDERSON, III, AVERY [FB]	83-58	H 25	

Oklahoma St. 58, Kansas 83

**Official Substitutions Log
Oklahoma St. vs Kansas
Period 1
February 25, 2020 at Allen Fieldhouse**



VISITORS: Oklahoma St.	Time	Score	HOME: Kansas
1 LAURENT, JONATHAN			0 GARRETT, MARCUS
12 MCGRIFF, CAMERON			1 DOTSON, DEVON
13 LIKEKELE, ISAAC			4 MOSS, ISAIAH
14 ANEI, YOR			30 AGBAJI, OCHAI
21 WATERS, III, LINDY			35 AZUBUIKE, UDOKA
	12:53	8-9	SUB OUT: GARRETT, MARCUS
	12:53		SUB OUT: AGBAJI, OCHAI
	12:53		SUB OUT: AZUBUIKE, UDOKA
	12:53		SUB IN: BRAUN, CHRISTIAN
	12:53		SUB IN: ENARUNA, TRISTAN
	12:53		SUB IN: MCCORMACK, DAVID
SUB OUT: 1 LAURENT, JONATHAN	12:53		
SUB OUT: 14 ANEI, YOR	12:53		
SUB IN: 4 DZIAGWA, THOMAS	12:53		
SUB IN: 22 BOONE, KALIB	12:53		
	11:59	10-12	SUB OUT: DOTSON, DEVON
	11:59		SUB IN: GARRETT, MARCUS
	11:08	10-15	SUB OUT: MOSS, ISAIAH
	11:08		SUB OUT: MCCORMACK, DAVID
	11:08		SUB IN: AGBAJI, OCHAI
	11:08		SUB IN: AZUBUIKE, UDOKA
SUB OUT: 4 DZIAGWA, THOMAS	10:28	10-15	
SUB IN: 0 ANDERSON, III, AVERY	10:28		
SUB OUT: 22 BOONE, KALIB	10:19	10-16	
SUB IN: 14 ANEI, YOR	10:19		
	08:45	14-18	SUB OUT: ENARUNA, TRISTAN
	08:45		SUB IN: DOTSON, DEVON
SUB OUT: 12 MCGRIFF, CAMERON	08:45		
SUB OUT: 14 ANEI, YOR	08:45		
SUB IN: 1 LAURENT, JONATHAN	08:45		
SUB IN: 20 BOONE, KEYLAN	08:45		
SUB OUT: 21 WATERS, III, LINDY	08:40	14-19	
SUB IN: 14 ANEI, YOR	08:40		
	07:44	14-21	SUB OUT: GARRETT, MARCUS
	07:44		SUB OUT: AZUBUIKE, UDOKA
	07:44		SUB IN: MOSS, ISAIAH
	07:44		SUB IN: MCCORMACK, DAVID
SUB OUT: 13 LIKEKELE, ISAAC	07:44		
SUB IN: 21 WATERS, III, LINDY	07:44		
	07:11	15-23	SUB OUT: BRAUN, CHRISTIAN
	07:11		SUB IN: GARRETT, MARCUS
SUB OUT: 0 ANDERSON, III, AVERY	06:48	15-23	
SUB OUT: 20 BOONE, KEYLAN	06:48		
SUB IN: 12 MCGRIFF, CAMERON	06:48		
SUB IN: 13 LIKEKELE, ISAAC	06:48		
SUB OUT: 21 WATERS, III, LINDY	05:19	17-27	
SUB IN: 4 DZIAGWA, THOMAS	05:19		
	04:28	19-27	SUB OUT: DOTSON, DEVON
	04:28		SUB OUT: AGBAJI, OCHAI
	04:28		SUB OUT: MCCORMACK, DAVID
	04:28		SUB IN: BRAUN, CHRISTIAN
	04:28		SUB IN: ENARUNA, TRISTAN
	04:28		SUB IN: AZUBUIKE, UDOKA
SUB OUT: 1 LAURENT, JONATHAN	03:46	19-30	
SUB IN: 21 WATERS, III, LINDY	03:46		
	02:14	22-30	SUB OUT: ENARUNA, TRISTAN
	02:14		SUB IN: AGBAJI, OCHAI
	02:14		SUB OUT: BRAUN, CHRISTIAN
	02:14		SUB IN: DOTSON, DEVON
SUB OUT: 12 MCGRIFF, CAMERON	02:14		
SUB IN: 1 LAURENT, JONATHAN	02:14		
	01:34	25-33	SUB OUT: GARRETT, MARCUS
	01:34		SUB IN: BRAUN, CHRISTIAN
SUB OUT: 4 DZIAGWA, THOMAS	01:08	25-33	
SUB IN: 0 ANDERSON, III, AVERY	01:08		
SUB OUT: 21 WATERS, III, LINDY	00:02	25-35	
SUB IN: 35 ROESSINK, HIDDE	00:02		

Official Substitutions Log
Oklahoma St. vs Kansas
Period 2
February 25, 2020 at Allen Fieldhouse



VISITORS: Oklahoma St.	Time	Score	HOME: Kansas
1 LAURENT, JONATHAN			0 GARRETT, MARCUS
12 MCGRIFF, CAMERON			1 DOTSON, DEVON
13 LIKEKELE, ISAAC			4 MOSS, ISAIAH
14 ANEI, YOR			30 AGBAJI, OCHAI
21 WATERS, III, LINDY			35 AZUBUIKE, UDOKA
	20:00	-	SUB OUT: BRAUN, CHRISTIAN
	20:00		SUB IN: GARRETT, MARCUS
SUB OUT: 0 ANDERSON, III, AVERY	20:00		
SUB OUT: 35 ROESSINK, HIDDE	20:00		
SUB IN: 12 MCGRIFF, CAMERON	20:00		
SUB IN: 21 WATERS, III, LINDY	20:00		
SUB OUT: 1 LAURENT, JONATHAN	15:55	30-43	
SUB IN: 4 DZIAGWA, THOMAS	15:55		
SUB OUT: 4 DZIAGWA, THOMAS	14:12	30-50	
SUB OUT: 14 ANEI, YOR	14:12		
SUB IN: 0 ANDERSON, III, AVERY	14:12		
SUB IN: 22 BOONE, KALIB	14:12		
SUB OUT: 12 MCGRIFF, CAMERON	12:38	32-57	
SUB OUT: 0 ANDERSON, III, AVERY	12:38		
SUB IN: 1 LAURENT, JONATHAN	12:38		
SUB IN: 4 DZIAGWA, THOMAS	12:38		
	12:38		SUB OUT: GARRETT, MARCUS
	12:38		SUB IN: BRAUN, CHRISTIAN
	11:50	32-60	SUB OUT: DOTSON, DEVON
	11:50		SUB IN: GARRETT, MARCUS
SUB OUT: 22 BOONE, KALIB	10:49	34-63	
SUB IN: 14 ANEI, YOR	10:49		
	10:49		SUB OUT: AZUBUIKE, UDOKA
	10:49		SUB IN: MCCORMACK, DAVID
	10:27	35-64	SUB OUT: AGBAJI, OCHAI
	10:27		SUB IN: ENARUNA, TRISTAN
SUB OUT: 4 DZIAGWA, THOMAS	10:27		
SUB IN: 12 MCGRIFF, CAMERON	10:27		
	09:03	38-69	SUB OUT: MOSS, ISAIAH
	09:03		SUB IN: DOTSON, DEVON
SUB OUT: 13 LIKEKELE, ISAAC	08:06	40-69	
SUB IN: 0 ANDERSON, III, AVERY	08:06		
	06:44	40-74	SUB OUT: GARRETT, MARCUS
	06:44		SUB IN: AZUBUIKE, UDOKA
SUB OUT: 1 LAURENT, JONATHAN	06:30	42-74	
SUB IN: 13 LIKEKELE, ISAAC	06:30		
SUB OUT: 14 ANEI, YOR	05:21	44-78	
SUB OUT: 21 WATERS, III, LINDY	05:21		
SUB IN: 20 BOONE, KEYLAN	05:21		
SUB IN: 22 BOONE, KALIB	05:21		
SUB OUT: 0 ANDERSON, III, AVERY	05:00	47-80	
SUB IN: 31 MITCHELL, DEE	05:00		
	04:21	47-83	SUB OUT: DOTSON, DEVON
	04:21		SUB OUT: AZUBUIKE, UDOKA
	04:21		SUB IN: GARRETT, MARCUS
	04:21		SUB IN: AGBAJI, OCHAI
	02:34	51-83	SUB OUT: GARRETT, MARCUS
	02:34		SUB OUT: AGBAJI, OCHAI
	02:34		SUB IN: TEAHAN, CHRIS
	02:34		SUB IN: JANKOVICH, MICHAEL
SUB OUT: 13 LIKEKELE, ISAAC	02:34		
SUB IN: 0 ANDERSON, III, AVERY	02:34		
SUB OUT: 12 MCGRIFF, CAMERON	02:26	52-83	
SUB IN: 35 ROESSINK, HIDDE	02:26		

Oklahoma St. 58, Kansas 83

Official Shot Chart
Oklahoma St. vs Kansas
PERIOD 1 Shots
February 25, 2020 at Allen Fieldhouse

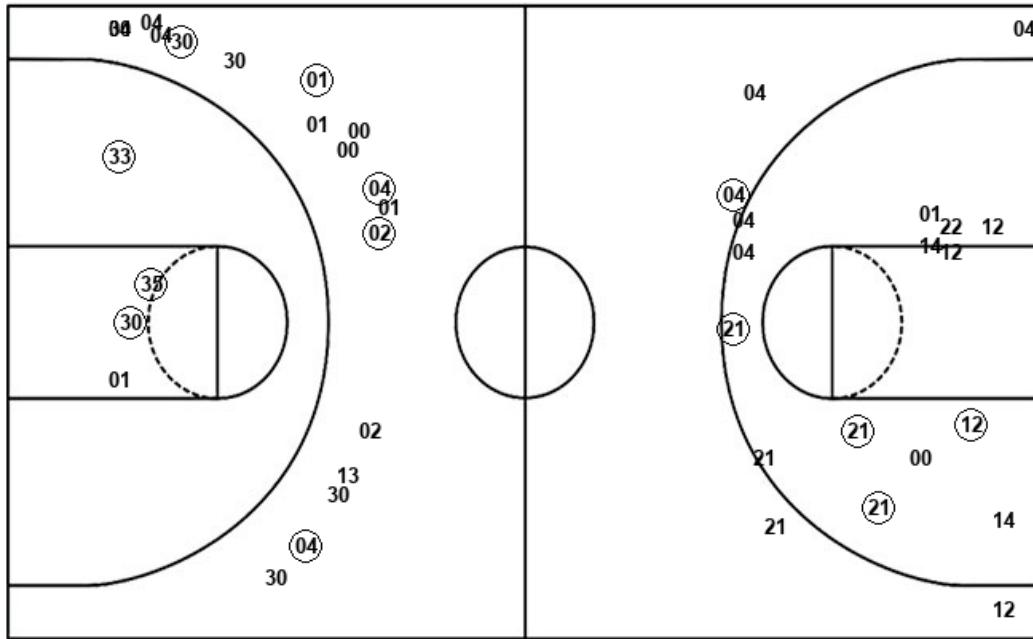


Kansas

Oklahoma St.

Layups
 01 01 01 00 (33)
 01 33

Dunks
 (33) 35 (35)



Layups
 13 13 (13) 12 (12)
 14 13 (14) (14) 13
 12

Dunks
 (12)

KAN : Period 1	Made	Att	Pct
Layups	1	7	14.3
Dunks	2	3	66.7
2PT Field Goals	6	14	42.9
3PT Field Goals	5	18	27.8
Total Field Goals	11	32	34.4

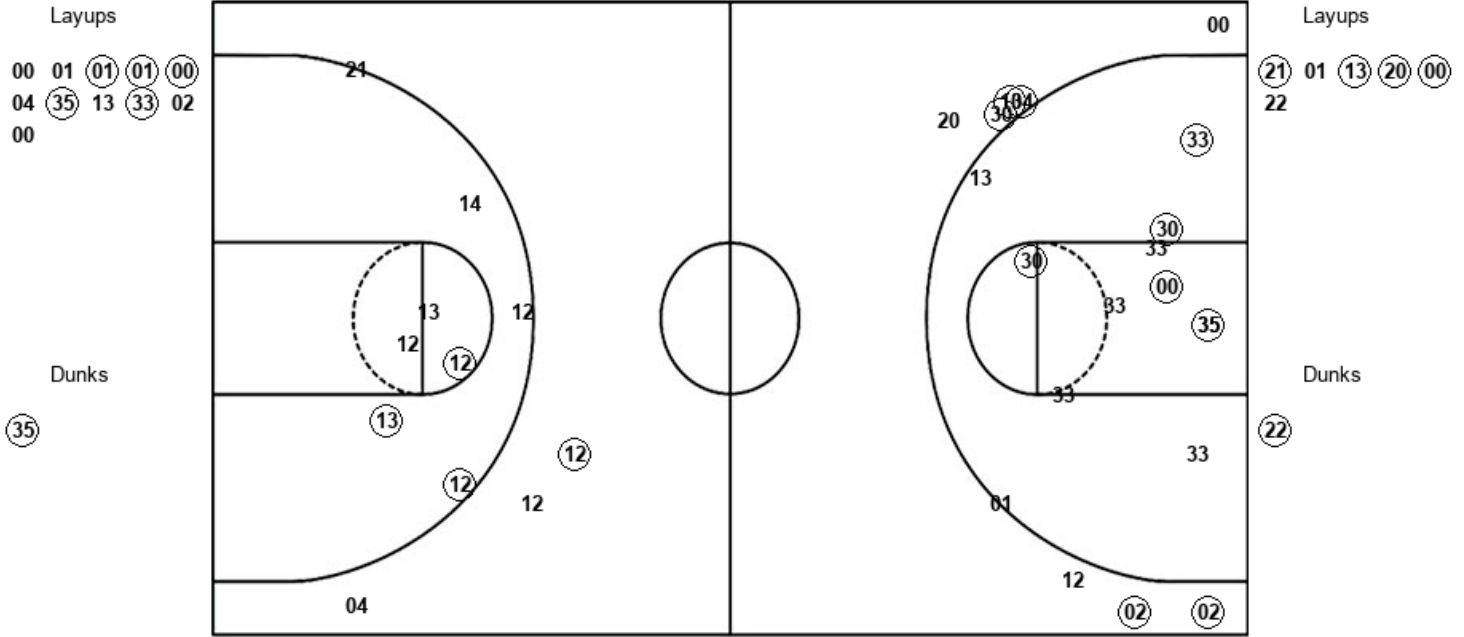
OSU : Period 1	Made	Att	Pct
Layups	4	11	36.4
Dunks	1	1	100.0
2PT Field Goals	8	22	36.4
3PT Field Goals	2	9	22.2
Total Field Goals	10	31	32.3

Official Shot Chart
Oklahoma St. vs Kansas
PERIOD 2 Shots
February 25, 2020 at Allen Fieldhouse



Kansas

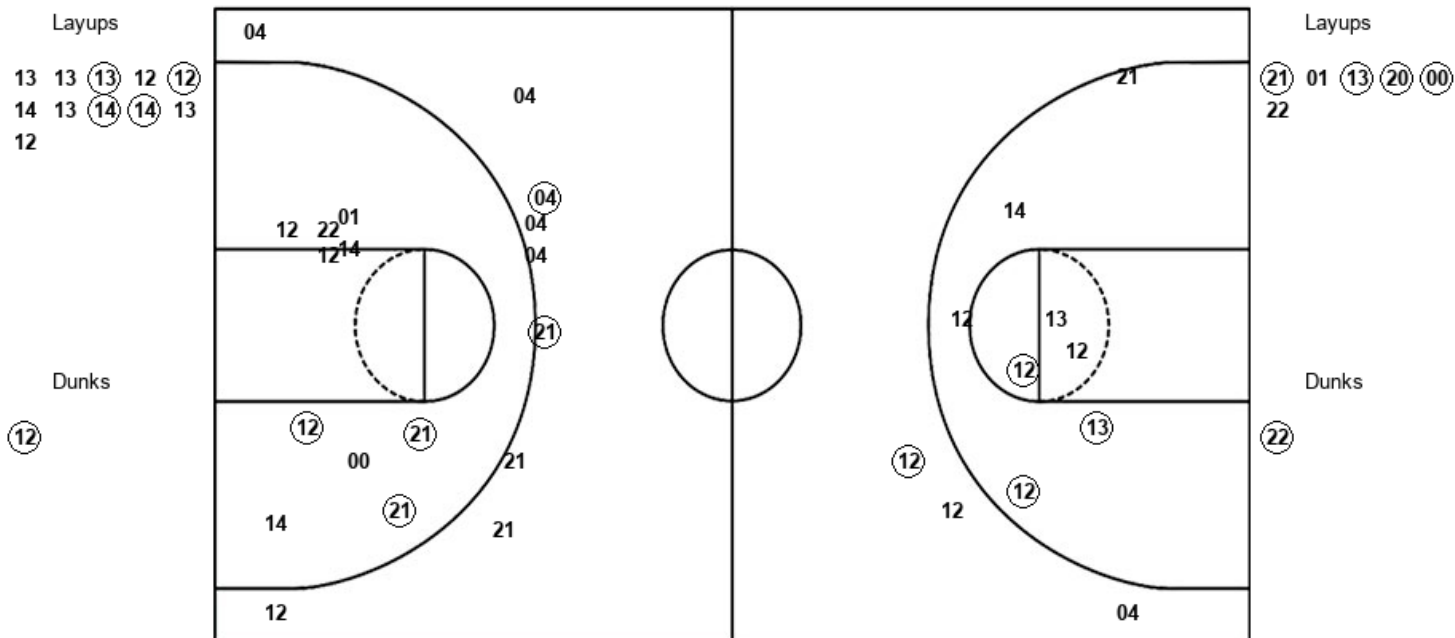
Oklahoma St.



KAN : Period 2	Made	Att	Pct
Layups	5	11	45.5
Dunks	1	1	100.0
2PT Field Goals	12	22	54.5
3PT Field Goals	5	10	50.0
Total Field Goals	17	32	53.1

OSU : Period 2	Made	Att	Pct
Layups	4	6	66.7
Dunks	1	1	100.0
2PT Field Goals	9	18	50.0
3PT Field Goals	1	3	33.3
Total Field Goals	10	21	47.6

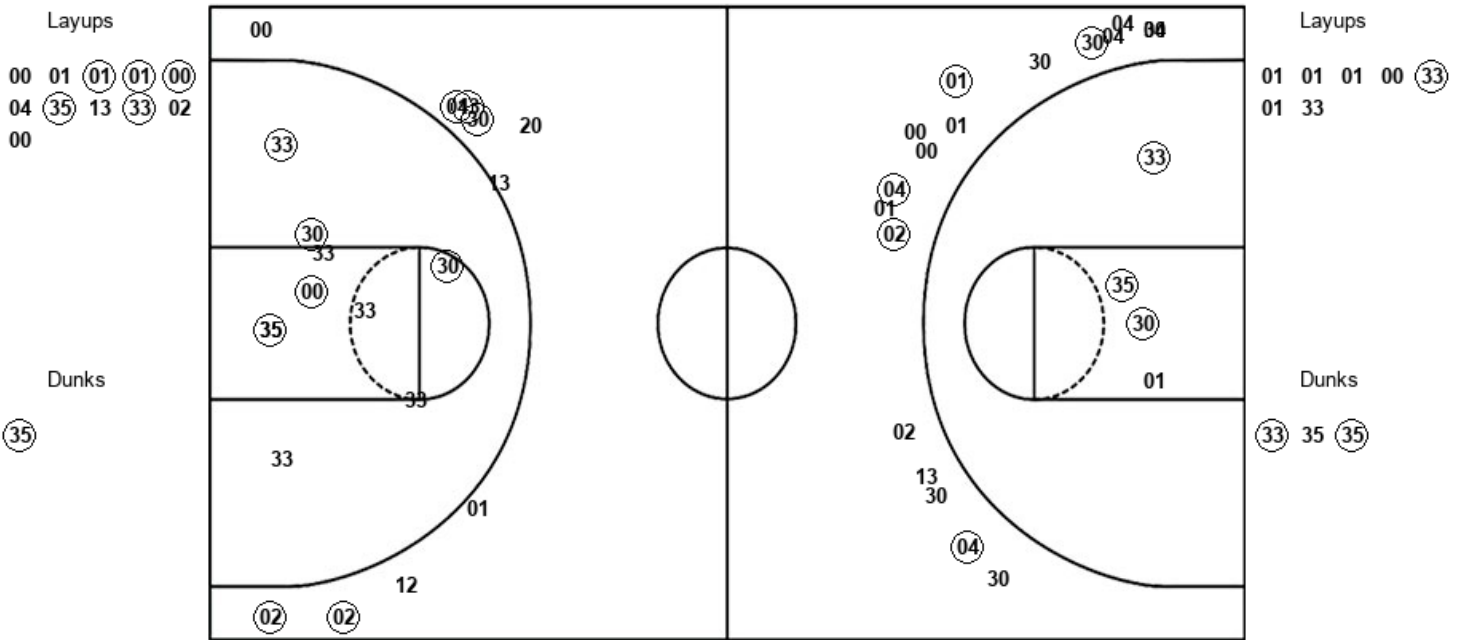
Official Shot Chart
Oklahoma St. vs Kansas
Oklahoma St. Team Shots
February 25, 2020 at Allen Fieldhouse



OSU : Period 1	Made	Att	Pct
Layups	4	11	36.4
Dunks	1	1	100.0
2PT Field Goals	8	22	36.4
3PT Field Goals	2	9	22.2
Total Field Goals	10	31	32.3

OSU : Period 2	Made	Att	Pct
Layups	4	6	66.7
Dunks	1	1	100.0
2PT Field Goals	9	18	50.0
3PT Field Goals	1	3	33.3
Total Field Goals	10	21	47.6

Official Shot Chart
Oklahoma St. vs Kansas
Kansas Team Shots
February 25, 2020 at Allen Fieldhouse



KAN : Period 1	Made	Att	Pct
Layups	1	7	14.3
Dunks	2	3	66.7
2PT Field Goals	6	14	42.9
3PT Field Goals	5	18	27.8
Total Field Goals	11	32	34.4

KAN : Period 2	Made	Att	Pct
Layups	5	11	45.5
Dunks	1	1	100.0
2PT Field Goals	12	22	54.5
3PT Field Goals	5	10	50.0
Total Field Goals	17	32	53.1