

FINAL SCORE



Pittsburg St.

42



Kansas

102

November 01, 2019 • Allen Fieldhouse

FINAL STATISTICS

Official Box Score
Pittsburg St. vs Kansas
Game Totals -- Final Statistics
November 01, 2019 at Allen Fieldhouse



Pittsburg St. 42

No.	Player	S	Pts	FG	3FG	FT	OR	DR	TR	PF	A	TO	Blk	Stl	Min	+/-
03	WOMACK, JAH-KOBE	G	4	1-6	0-2	2-2	0	0	0	0	1	4	0	0	17	-30
04	ELLIOTT, RAY	G	0	0-12	0-6	0-0	0	5	5	0	0	3	0	0	23	-53
12	WATERS, JR., DEJON	F	7	3-8	1-3	0-0	0	2	2	0	3	1	0	0	21	-33
14	LAWRENCE, R.J.	G	6	3-10	0-6	0-0	1	0	1	0	3	3	0	1	33	-45
33	EDMONDSON, CHRISTIAN	F	4	2-5	0-0	0-2	4	2	6	3	0	1	0	0	28	-48
05	JUSTICE, JALEN	G	0	0-2	0-2	0-0	0	3	3	0	1	0	0	0	12	-11
15	GIVENS II, ANTONIO	F	3	1-2	0-0	1-2	1	1	2	4	0	2	0	0	18	-31
20	HOLLOWAY, ETHAN	F	0	0-0	0-0	0-0	0	1	1	0	0	0	0	0	4	1
21	HARTLOFF, LAYTON	F	0	0-2	0-1	0-0	0	1	1	0	2	0	0	0	9	-7
22	HARDING, GRANT	G	9	3-7	3-3	0-0	1	5	6	1	1	0	0	0	22	-26
23	ROELFS, DREW	G	9	3-5	3-5	0-0	0	0	0	0	0	0	0	0	11	-17
TEAM							0	3	3	0		0				
TOTALS			42	16-59	7-28	3-6	7	23	30	8	11	14	0	1	198	

Shooting By Period

Period	FG	FG%	3FG	3FG%	FT	FT%
1st Half	9-32	28%	2-11	18%	2-2	100%
2nd Half	7-27	26%	5-17	29%	1-4	25%
Game	16-59	27.1%	7-28	25.0%	3-6	50.0%

Last FG: 2nd-02:19
Largest lead: By 0 at
Technical Fouls: None.

Kansas 102

No.	Player	S	Pts	FG	3FG	FT	OR	DR	TR	PF	A	TO	Blk	Stl	Min	+/-
00	GARRETT, MARCUS	G	5	2-4	1-2	0-0	0	2	2	0	3	1	0	1	16	33
01	DOTSON, DEVON	G	12	4-13	2-7	2-2	0	2	2	0	7	0	0	2	25	42
30	AGBAJI, OCHAI	G	19	7-8	5-6	0-0	1	3	4	1	6	0	1	1	22	34
33	MCCORMACK, DAVID	F	13	6-7	0-1	1-2	0	5	5	0	1	0	0	0	14	35
35	AZUBUIKE, UDOKA	C	8	4-4	0-0	0-4	4	8	12	0	0	1	3	1	21	40
02	BRAUN, CHRISTIAN	G	9	3-4	3-4	0-0	0	2	2	1	2	1	0	1	21	29
04	MOSS, ISIAHA	G	3	1-4	1-4	0-0	0	0	0	1	0	0	0	0	5	7
05	ELLIOTT, ELIJAH	G	0	0-1	0-1	0-0	0	1	1	0	0	0	0	0	4	-1
10	WILSON, JALEN	F	3	1-4	1-4	0-0	0	2	2	0	1	1	0	0	16	15
12	TEAHAN, CHRIS	G	0	0-2	0-2	0-0	0	1	1	0	0	0	0	0	5	2
13	ENARUNA, TRISTAN	F	9	3-9	2-4	1-2	3	5	8	0	5	0	0	1	21	19
20	JANKOVICH, MICHAEL	G	3	1-1	1-1	0-0	0	0	0	0	0	0	0	0	1	5
22	DESOUSA, SILVIO	F	9	4-7	0-0	1-2	5	5	10	1	2	0	2	0	14	22
44	LIGHTFOOT, MITCH	F	9	4-6	1-2	0-0	1	1	2	1	0	0	1	1	13	18
TEAM							0	1	1	0		0				
TOTALS			102	40-74	17-38	5-12	14	38	52	5	27	4	7	8	198	

Shooting By Period

Period	FG	FG%	3FG	3FG%	FT	FT%
1st Half	20-41	49%	7-18	39%	2-4	50%
2nd Half	20-33	61%	10-20	50%	3-8	38%
Game	40-74	54.1%	17-38	44.7%	5-12	41.7%

Last FG: 2nd-00:51
Largest lead: By 61 at
Technical Fouls: None.

Game Notes:

Officials: Joe DeRosa, Chris Rastatter, Jon Stigliano
Attendance: 16300

Start Time: 12:00 AM

Score	1st	2nd	TOT
Pitt	22	20	42
Kan	49	53	102

Pitt led for 0:00. Kan led for 38:37.
Game was tied for 0:0.
Times tied: 0 Lead Changes: 0

Points from	Pitt	Kan
In the Paint	10	44
Off Turns	7	19
2nd Chance	2	19
Fast Break	3	29
Bench	21	45

Official Box Score
Pittsburg St. vs Kansas
First Half Statistics Only
November 01, 2019 at Allen Fieldhouse



Pittsburg St. 22

No.	Player	S	Pts	FG	3FG	FT	OR	DR	TR	PF	A	TO	Blk	Stl	Min
03	WOMACK, JAH-KOBE	G	4	1-4	0-1	2-2	0	0	0	0	1	2	0	0	11
04	ELLIOTT, RAY	G	0	0-10	0-4	0-0	0	3	3	0	0	2	0	0	14
12	WATERS, JR., DEJON	F	7	3-7	1-3	0-0	0	2	2	0	2	1	0	0	16
14	LAWRENCE, R.J.	G	6	3-5	0-2	0-0	1	0	1	0	0	1	0	0	17
33	EDMONDSON, CHRISTIAN	F	2	1-3	0-0	0-0	4	2	6	1	0	0	0	0	16
05	JUSTICE, JALEN	G	0	0-0	0-0	0-0	0	0	0	0	0	0	0	0	4
15	GIVENS II, ANTONIO	F	0	0-0	0-0	0-0	0	1	1	2	0	1	0	0	8
20	HOLLOWAY, ETHAN	F	0	0-0	0-0	0-0	0	0	0	0	0	0	0	0	0
21	HARTLOFF, LAYTON	F	0	0-0	0-0	0-0	0	0	0	0	0	0	0	0	1
22	HARDING, GRANT	G	3	1-3	1-1	0-0	0	4	4	0	1	0	0	0	12
23	ROELFS, DREW	G	0	0-0	0-0	0-0	0	0	0	0	0	0	0	0	0
	TEAM			0-0			0	2	2	0	0	0	0	0	0
TOTALS			22	9-32	2-11	2-2	5	14	19	3	4	7	0	0	100

Shooting By Period

Period	FG	FG%	3FG	3FG%	FT	FT%
1st Half	9-32	28%	2-11	18%	2-2	100%
Game	16-59	27.1%	7-28	25.0%	3-6	50.0%

Last FG Half: Pitt 2nd-02:19

Kansas 49

No.	Player	S	Pts	FG	3FG	FT	OR	DR	TR	PF	A	TO	Blk	Stl	Min
00	GARRETT, MARCUS	G	2	1-3	0-1	0-0	0	2	2	0	3	1	0	1	14
01	DOTSON, DEVON	G	5	1-9	1-5	2-2	0	2	2	0	5	0	0	2	17
30	AGBAJI, OCHAI	G	16	6-6	4-4	0-0	1	3	4	0	3	0	1	1	14
33	MCCORMACK, DAVID	F	6	3-4	0-1	0-0	0	3	3	0	1	0	0	0	9
35	AZUBUIKE, UDOKA	C	8	4-4	0-0	0-2	3	4	7	0	0	0	2	0	14
02	BRAUN, CHRISTIAN	G	0	0-0	0-0	0-0	0	1	1	1	1	0	0	0	7
04	MOSS, ISAIAH	G	3	1-4	1-4	0-0	0	0	0	1	0	0	0	0	5
05	ELLIOTT, ELIJAH	G	0	0-0	0-0	0-0	0	0	0	0	0	0	0	0	0
10	WILSON, JALEN	F	0	0-1	0-1	0-0	0	0	0	0	0	0	0	0	4
12	TEAHAN, CHRIS	G	0	0-0	0-0	0-0	0	0	0	0	0	0	0	0	0
13	ENARUNA, TRISTAN	F	3	1-5	1-2	0-0	1	0	1	0	0	0	0	0	6
20	JANKOVICH, MICHAEL	G	0	0-0	0-0	0-0	0	0	0	0	0	0	0	0	0
22	DESOUZA, SILVIO	F	4	2-4	0-0	0-0	3	2	5	0	1	0	0	0	7
44	LIGHTFOOT, MITCH	F	2	1-1	0-0	0-0	0	0	0	0	0	0	0	0	2
	TEAM			0-0			0	1	1	0	0	0	0	0	0
TOTALS			49	20-41	7-18	2-4	8	18	26	2	14	1	3	4	100

Shooting By Period

Period	FG	FG%	3FG	3FG%	FT	FT%
1st Half	20-41	49%	7-18	39%	2-4	50%
Game	40-74	54.1%	17-38	44.7%	5-12	41.7%

Last FG Half: Kan 2nd-00:51

Game Notes:

Officials: Joe DeRosa, Chris Rastatter, Jon Stigliano
Attendance: 16300

Start Time: 12:00 AM

Score	1st	2nd	TOT
Pitt	22	20	42
Kan	49	53	102

Points from (This Period)	Pitt	Kan
In the Paint	6	26
Off Turns	2	8
2nd Chance	2	16
Fast Break	3	12
Bench	3	12

Official Play-By-Play
Pittsburg St. vs Kansas
First Half
November 01, 2019 at Allen Fieldhouse



Period 1

Starters:

Pittsburg St.: 3 WOMACK, JAH-KOBE (G); 4 ELLIOTT, RAY (G); 12 WATERS, JR., DEJON (F); 14 LAWRENCE, R.J. (G); 33 EDMONDSON, CHRISTIAN (F);

Kansas: 00 GARRETT, MARCUS (G); 1 DOTSON, DEVON (G); 30 AGBAJI, OCHAI (G); 33 MCCORMACK, DAVID (F); 35 AZUBUIKE, UDOKA (C);

Time	VISITORS: Pittsburg St.	Score	Margin	HOME: Kansas
19:47				MISSED 3PTR by DOTSON, DEVON
19:40	REBOUND (DEF) by ELLIOTT, RAY			
19:38	MISSED LAYUP by ELLIOTT, RAY			
19:28	REBOUND (OFF) by EDMONDSON, CHRISTIAN			
19:28	MISSED LAYUP by EDMONDSON, CHRISTIAN			
19:25	REBOUND (OFF) by EDMONDSON, CHRISTIAN			
19:25	MISSED LAYUP by EDMONDSON, CHRISTIAN			
19:18				REBOUND (DEF) by AZUBUIKE, UDOKA
19:17		2-0	H 2	GOOD! LAYUP by MCCORMACK, DAVID
19:17				ASSIST by AGBAJI, OCHAI
18:59	GOOD! JUMPER by EDMONDSON, CHRISTIAN	2-2	T	
18:59	ASSIST by WOMACK, JAH-KOBE			
18:47		4-2	H 2	GOOD! DUNK by AZUBUIKE, UDOKA
18:47				ASSIST by MCCORMACK, DAVID
18:29	MISSED JUMPER by WATERS, JR., DEJON			
18:24				REBOUND (DEF) by AGBAJI, OCHAI
18:20		6-2	H 4	GOOD! DUNK by MCCORMACK, DAVID
18:20				ASSIST by AGBAJI, OCHAI
17:54	MISSED LAYUP by WATERS, JR., DEJON [PNT]			
17:50				REBOUND (DEF) by AZUBUIKE, UDOKA
17:44		8-2	H 6	GOOD! LAYUP by MCCORMACK, DAVID [PNT]
17:44				ASSIST by DOTSON, DEVON
17:42	TIMEOUT 30SEC			
17:28	TURNOVER by LAWRENCE, R.J.			
17:28				STEAL by AGBAJI, OCHAI
17:23		10-2	H 8	GOOD! DUNK by AGBAJI, OCHAI [FB]
16:57	MISSED 3PTR by ELLIOTT, RAY			
16:52	REBOUND (OFF) by EDMONDSON, CHRISTIAN			
16:51	MISSED 3PTR by WOMACK, JAH-KOBE			
16:48				REBOUND (DEF) by DOTSON, DEVON
16:45				TURNOVER by GARRETT, MARCUS
16:25	GOOD! JUMPER by WATERS, JR., DEJON	10-4	H 6	
16:05				MISSED JUMPER by GARRETT, MARCUS [PNT]
16:00				REBOUND (OFF) by AZUBUIKE, UDOKA
15:58	TIMEOUT MEDIA			
15:58	SUB OUT: LAWRENCE, R.J.			
15:58	SUB IN: GIVENS II, ANTONIO			
15:52		13-4	H 9	GOOD! 3PTR by AGBAJI, OCHAI
15:52				ASSIST by DOTSON, DEVON
15:29	TURNOVER by WOMACK, JAH-KOBE			
15:29				STEAL by GARRETT, MARCUS
15:23		15-4	H 11	GOOD! LAYUP by GARRETT, MARCUS [FB]
15:04	MISSED JUMPER by WOMACK, JAH-KOBE			
15:00				REBOUND (DEF) by GARRETT, MARCUS
14:57		17-4	H 13	GOOD! LAYUP by AGBAJI, OCHAI [FB]
14:57				ASSIST by GARRETT, MARCUS
14:42	MISSED JUMPER by ELLIOTT, RAY			
14:39				REBOUND (DEF) by GARRETT, MARCUS
14:30				MISSED 3PTR by MCCORMACK, DAVID
14:26				REBOUND (OFF) by AGBAJI, OCHAI
14:19	FOUL by GIVENS II, ANTONIO [PNT]			
14:19		18-4	H 14	GOOD! FT by DOTSON, DEVON
14:19				SUB OUT: GARRETT, MARCUS
14:19				SUB OUT: AGBAJI, OCHAI
14:19				SUB OUT: MCCORMACK, DAVID
14:19				SUB IN: BRAUN, CHRISTIAN
14:19				SUB IN: MOSS, ISIAIAH
14:19				SUB IN: DESOUSA, SILVIO
14:19	SUB OUT: WATERS, JR., DEJON			
14:19	SUB IN: LAWRENCE, R.J.			
14:19		19-4	H 15	GOOD! FT by DOTSON, DEVON
14:10				FOUL by MOSS, ISIAIAH
14:05	MISSED LAYUP by ELLIOTT, RAY [PNT]			
14:05				REBOUND (DEF) by AZUBUIKE, UDOKA
14:05				BLOCK by AZUBUIKE, UDOKA
13:56		22-4	H 18	GOOD! 3PTR by MOSS, ISIAIAH
13:56				ASSIST by BRAUN, CHRISTIAN
13:35	TURNOVER by WOMACK, JAH-KOBE			
13:35				STEAL by DOTSON, DEVON
13:30				MISSED LAYUP by DOTSON, DEVON [PNT]

Time	VISITORS: Pittsburg St.	Score	Margin	HOME: Kansas
13:21				REBOUND (OFF) by AZUBUIKE, UDOKA
13:21		24-4	H 20	GOOD! DUNK by AZUBUIKE, UDOKA
13:10	MISSED 3PTR by ELLIOTT, RAY			
13:05	REBOUND (OFF) by LAWRENCE, R.J.			
12:55				FOUL by BRAUN, CHRISTIAN
12:55	GOOD! FT by WOMACK, JAH-KOBE	24-5	H 19	
12:55				SUB OUT: DOTSON, DEVON
12:55				SUB OUT: AZUBUIKE, UDOKA
12:55				SUB IN: GARRETT, MARCUS
12:55				SUB IN: LIGHTFOOT, MITCH
12:55	GOOD! FT by WOMACK, JAH-KOBE	24-6	H 18	
12:55	SUB OUT: WOMACK, JAH-KOBE			
12:55	SUB IN: JUSTICE, JALEN			
12:35				MISSED JUMPER by DESOUSA, SILVIO
12:30	REBOUND (DEF) by GIVENS II, ANTONIO			
12:27	MISSED 3PTR by ELLIOTT, RAY			
12:23	REBOUND (OFF) by EDMONDSON, CHRISTIAN			
12:09	TURNOVER by GIVENS II, ANTONIO [PNT]			
12:02				MISSED LAYUP by DESOUSA, SILVIO
11:56	REBOUND (DEF) by ELLIOTT, RAY			
11:55	TURNOVER by ELLIOTT, RAY			
11:55	TIMEOUT MEDIA			
11:55	SUB OUT: ELLIOTT, RAY			
11:55	SUB OUT: EDMONDSON, CHRISTIAN			
11:55	SUB IN: WATERS, JR., DEJON			
11:55	SUB IN: HARDING, GRANT			
11:53				MISSED 3PTR by MOSS, ISAIAH
11:49	REBOUND (DEF) by WATERS, JR., DEJON			
11:37	MISSED 3PTR by WATERS, JR., DEJON			
11:33				REBOUND (DEF) by DESOUSA, SILVIO
11:31				MISSED 3PTR by MOSS, ISAIAH
11:22				REBOUND (OFF) by DESOUSA, SILVIO
11:22		26-6	H 20	GOOD! DUNK by DESOUSA, SILVIO
11:16	GOOD! JUMPER by LAWRENCE, R.J.	26-8	H 18	
10:54		28-8	H 20	GOOD! LAYUP by LIGHTFOOT, MITCH [PNT]
10:54				ASSIST by GARRETT, MARCUS
10:33	TURNOVER by WATERS, JR., DEJON			
10:33				SUB OUT: MOSS, ISAIAH
10:33				SUB OUT: LIGHTFOOT, MITCH
10:33				SUB IN: WILSON, JALEN
10:33				SUB IN: ENARUNA, TRISTAN
10:20				MISSED 3PTR by GARRETT, MARCUS
10:17	REBOUND (DEF) by HARDING, GRANT			
10:02	MISSED 3PTR by LAWRENCE, R.J.			
09:58				REBOUND (DEF) by DESOUSA, SILVIO
09:48				SUB OUT: GARRETT, MARCUS
09:48				SUB IN: DOTSON, DEVON
09:41				MISSED 3PTR by ENARUNA, TRISTAN
09:36				REBOUND (OFF) by DESOUSA, SILVIO
09:35		31-8	H 23	GOOD! 3PTR by DOTSON, DEVON
09:35				ASSIST by DESOUSA, SILVIO
09:03	MISSED JUMPER by HARDING, GRANT [PNT]			
09:00				REBOUND (DEF) by BRAUN, CHRISTIAN
09:00	FOUL by GIVENS II, ANTONIO			
09:00	SUB OUT: JUSTICE, JALEN			
09:00	SUB OUT: GIVENS II, ANTONIO			
09:00	SUB IN: WOMACK, JAH-KOBE			
09:00	SUB IN: EDMONDSON, CHRISTIAN			
08:56				MISSED 3PTR by DOTSON, DEVON
08:49				REBOUND (OFF) by DESOUSA, SILVIO
08:49		33-8	H 25	GOOD! LAYUP by DESOUSA, SILVIO
08:35	GOOD! JUMPER by WATERS, JR., DEJON	33-10	H 23	
08:10				MISSED JUMPER by ENARUNA, TRISTAN [PNT]
08:08				REBOUND (OFF) by ENARUNA, TRISTAN
08:08				MISSED LAYUP by ENARUNA, TRISTAN
08:08	REBOUND (DEF) by TEAM			
08:08				SUB OUT: BRAUN, CHRISTIAN
08:08				SUB OUT: DESOUSA, SILVIO
08:08				SUB IN: AGBAJI, OCHAI
08:08				SUB IN: AZUBUIKE, UDOKA
07:58	GOOD! 3PTR by HARDING, GRANT	33-13	H 20	
07:58	ASSIST by WATERS, JR., DEJON			
07:28		36-13	H 23	GOOD! 3PTR by ENARUNA, TRISTAN
07:28				ASSIST by DOTSON, DEVON
07:01	GOOD! LAYUP by LAWRENCE, R.J.	36-15	H 21	
07:01	ASSIST by WATERS, JR., DEJON			
06:45				MISSED LAYUP by DOTSON, DEVON [PNT]
06:41	REBOUND (DEF) by HARDING, GRANT			
06:37	GOOD! 3PTR by WATERS, JR., DEJON [FB]	36-18	H 18	
06:37	ASSIST by HARDING, GRANT			

Time	VISITORS: Pittsburg St.	Score	Margin	HOME: Kansas
06:21				MISSED 3PTR by WILSON, JALEN
06:17	REBOUND (DEF) by HARDING, GRANT			
06:12	MISSED JUMPER by WOMACK, JAH-KOBE			
06:08				REBOUND (DEF) by TEAM
06:08	TIMEOUT MEDIA			
06:08				SUB OUT: WILSON, JALEN
06:08				SUB IN: GARRETT, MARCUS
06:08	SUB OUT: WOMACK, JAH-KOBE			
06:08	SUB IN: ELLIOTT, RAY			
05:47				MISSED LAYUP by ENARUNA, TRISTAN [PNT]
05:42	REBOUND (DEF) by EDMONDSON, CHRISTIAN			
05:17	MISSED LAYUP by ELLIOTT, RAY [PNT]			
05:14				REBOUND (DEF) by AGBAJI, OCHAI
05:06		38-18	H 20	GOOD! DUNK by AZUBUIKE, UDOKA [PNT]
05:06				ASSIST by AGBAJI, OCHAI
04:50	GOOD! JUMPER by LAWRENCE, R.J.	38-20	H 18	
04:39	FOUL by EDMONDSON, CHRISTIAN			
04:39				MISSED FT by AZUBUIKE, UDOKA
04:39				REBOUND (DEADB) by TEAM
04:39				SUB OUT: ENARUNA, TRISTAN
04:39				SUB IN: MCCORMACK, DAVID
04:39				MISSED FT by AZUBUIKE, UDOKA
04:39	REBOUND (DEF) by EDMONDSON, CHRISTIAN			
04:11	MISSED 3PTR by ELLIOTT, RAY			
04:07				REBOUND (DEF) by MCCORMACK, DAVID
04:01				MISSED 3PTR by DOTSON, DEVON
03:55	REBOUND (DEF) by HARDING, GRANT			
03:32	TURNOVER by ELLIOTT, RAY [PNT]			
03:32				STEAL by DOTSON, DEVON
03:27				MISSED LAYUP by DOTSON, DEVON
03:21				REBOUND (OFF) by AZUBUIKE, UDOKA
03:21		40-20	H 20	GOOD! LAYUP by AZUBUIKE, UDOKA
03:07	MISSED 3PTR by LAWRENCE, R.J.			
03:03				REBOUND (DEF) by MCCORMACK, DAVID
03:00		43-20	H 23	GOOD! 3PTR by AGBAJI, OCHAI [FB]
03:00				ASSIST by GARRETT, MARCUS
02:44	MISSED 3PTR by WATERS, JR.,DEJON			
02:40				REBOUND (DEF) by AGBAJI, OCHAI
02:35		46-20	H 26	GOOD! 3PTR by AGBAJI, OCHAI
02:35				ASSIST by DOTSON, DEVON
02:14	MISSED LAYUP by ELLIOTT, RAY [PNT]			
02:14				BLOCK by AZUBUIKE, UDOKA
02:06				REBOUND (DEF) by AZUBUIKE, UDOKA
01:54				MISSED 3PTR by DOTSON, DEVON
01:50	REBOUND (DEF) by ELLIOTT, RAY			
01:35	MISSED JUMPER by ELLIOTT, RAY			
01:32				REBOUND (DEF) by MCCORMACK, DAVID
01:13				MISSED LAYUP by DOTSON, DEVON [PNT]
01:11	REBOUND (DEF) by WATERS, JR.,DEJON			
01:11	TIMEOUT MEDIA			
01:11				SUB OUT: GARRETT, MARCUS
01:11				SUB OUT: MCCORMACK, DAVID
01:11				SUB OUT: AZUBUIKE, UDOKA
01:11				SUB IN: BRAUN, CHRISTIAN
01:11				SUB IN: MOSS, ISAIAH
01:11				SUB IN: DESOUSA, SILVIO
01:11	SUB OUT: WATERS, JR.,DEJON			
01:11	SUB OUT: LAWRENCE, R.J.			
01:11	SUB OUT: EDMONDSON, CHRISTIAN			
01:11	SUB IN: WOMACK, JAH-KOBE			
01:11	SUB IN: GIVENS II, ANTONIO			
01:11	SUB IN: HARTLOFF, LAYTON			
00:48	MISSED LAYUP by HARDING, GRANT [PNT]			
00:48				BLOCK by AGBAJI, OCHAI
00:43				REBOUND (DEF) by DOTSON, DEVON
00:41		49-20	H 29	GOOD! 3PTR by AGBAJI, OCHAI [FB]
00:41				ASSIST by DOTSON, DEVON
00:18	GOOD! JUMPER by WOMACK, JAH-KOBE [PNT]	49-22	H 27	
00:02				MISSED 3PTR by MOSS, ISAIAH
00:00	REBOUND (DEF) by TEAM			

Pittsburg St. 22, Kansas 49

Points from (This Period)	Pitt	Kan
In the Paint	6	26
Off Turns	2	8
2nd Chance	2	16
Fast Break	3	12
Bench	3	12

Official Box Score
Pittsburg St. vs Kansas
Second Half Statistics Only
November 01, 2019 at Allen Fieldhouse



Pittsburg St. 20

No.	Player	S	Pts	FG	3FG	FT	OR	DR	TR	PF	A	TO	Blk	Stl	Min
03	WOMACK, JAH-KOBE	G	0	0-2	0-1	0-0	0	0	0	0	0	2	0	0	6
04	ELLIOTT, RAY	G	0	0-2	0-2	0-0	0	2	2	0	0	1	0	0	9
12	WATERS, JR., DEJON	F	0	0-1	0-0	0-0	0	0	0	0	1	0	0	0	4
14	LAWRENCE, R.J.	G	0	0-5	0-4	0-0	0	0	0	0	3	2	0	1	16
33	EDMONDSON, CHRISTIAN	F	2	1-2	0-0	0-2	0	0	0	2	0	1	0	0	12
05	JUSTICE, JALEN	G	0	0-2	0-2	0-0	0	3	3	0	1	0	0	0	8
15	GIVENS II, ANTONIO	F	3	1-2	0-0	1-2	1	0	1	2	0	1	0	0	10
20	HOLLOWAY, ETHAN	F	0	0-0	0-0	0-0	0	1	1	0	0	0	0	0	4
21	HARTLOFF, LAYTON	F	0	0-2	0-1	0-0	0	1	1	0	2	0	0	0	7
22	HARDING, GRANT	G	6	2-4	2-2	0-0	1	1	2	1	0	0	0	0	10
23	ROELFS, DREW	G	9	3-5	3-5	0-0	0	0	0	0	0	0	0	0	11
	TEAM			0-0			0	1	1	0		0			
TOTALS			20	7-27	5-17	1-4	2	9	11	5	7	7	0	1	98

Shooting By Period

Period	FG	FG%	3FG	3FG%	FT	FT%
2nd Half	7-27	26%	5-17	29%	1-4	25%
Game	16-59	27.1%	7-28	25.0%	3-6	50.0%

Last FG Half: Pitt -

Kansas 53

No.	Player	S	Pts	FG	3FG	FT	OR	DR	TR	PF	A	TO	Blk	Stl	Min
00	GARRETT, MARCUS	G	3	1-1	1-1	0-0	0	0	0	0	0	0	0	0	2
01	DOTSON, DEVON	G	7	3-4	1-2	0-0	0	0	0	0	2	0	0	0	8
30	AGBAJI, OCHAI	G	3	1-2	1-2	0-0	0	0	0	1	3	0	0	0	8
33	MCCORMACK, DAVID	F	7	3-3	0-0	1-2	0	2	2	0	0	0	0	0	5
35	AZUBUIKE, UDOKA	C	0	0-0	0-0	0-2	1	4	5	0	0	1	1	1	7
02	BRAUN, CHRISTIAN	G	9	3-4	3-4	0-0	0	1	1	0	1	1	0	1	14
04	MOSS, ISAIAH	G	0	0-0	0-0	0-0	0	0	0	0	0	0	0	0	0
05	ELLIOTT, ELIJAH	G	0	0-1	0-1	0-0	0	1	1	0	0	0	0	0	4
10	WILSON, JALEN	F	3	1-3	1-3	0-0	0	2	2	0	1	1	0	0	11
12	TEAHAN, CHRIS	G	0	0-2	0-2	0-0	0	1	1	0	0	0	0	0	5
13	ENARUNA, TRISTAN	F	6	2-4	1-2	1-2	2	5	7	0	5	0	0	1	15
20	JANKOVICH, MICHAEL	G	3	1-1	1-1	0-0	0	0	0	0	0	0	0	0	1
22	DESOUSA, SILVIO	F	5	2-3	0-0	1-2	2	3	5	1	1	0	2	0	6
44	LIGHTFOOT, MITCH	F	7	3-5	1-2	0-0	1	1	2	1	0	0	1	1	11
	TEAM			0-0			0	0	0	0	0	0			
TOTALS			53	20-33	10-20	3-8	6	20	26	3	13	3	4	4	98

Shooting By Period

Period	FG	FG%	3FG	3FG%	FT	FT%
2nd Half	20-33	61%	10-20	50%	3-8	38%
Game	40-74	54.1%	17-38	44.7%	5-12	41.7%

Last FG Half: Kan -

Game Notes:

Officials: Joe DeRosa, Chris Rastatter, Jon Stigliano
 Attendance: 16300

Start Time: 12:00 AM

Score	1st	2nd	TOT
Pitt	22	20	42
Kan	49	53	102

Points from (This Period)	Pitt	Kan
In the Paint	4	18
Off Turns	5	11
2nd Chance	0	3
Fast Break	0	17
Bench	18	33

Official Play-By-Play
Pittsburg St. vs Kansas
Second Half
November 01, 2019 at Allen Fieldhouse



Period 2

Starters:

Pittsburg St.: 3 WOMACK, JAH-KOBE (G); 4 ELLIOTT, RAY (G); 12 WATERS, JR., DEJON (F); 14 LAWRENCE, R.J. (G); 33 EDMONDSON, CHRISTIAN (F);

Kansas: 00 GARRETT, MARCUS (G); 1 DOTSON, DEVON (G); 30 AGBAJI, OCHAI (G); 33 MCCORMACK, DAVID (F); 35 AZUBUIKE, UDOKA (C);

Time	VISITORS: Pittsburg St.	Score	Margin	HOME: Kansas
20:00				SUB OUT: BRAUN, CHRISTIAN
20:00				SUB OUT: MOSS, ISAIAH
20:00				SUB OUT: DESOUSA, SILVIO
20:00				SUB IN: GARRETT, MARCUS
20:00				SUB IN: MCCORMACK, DAVID
20:00				SUB IN: AZUBUIKE, UDOKA
20:00	SUB OUT: GIVENS II, ANTONIO			
20:00	SUB OUT: HARTLOFF, LAYTON			
20:00	SUB OUT: HARDING, GRANT			
20:00	SUB IN: WATERS, JR., DEJON			
20:00	SUB IN: LAWRENCE, R.J.			
20:00	SUB IN: EDMONDSON, CHRISTIAN			
19:36		51-22	H 29	GOOD! JUMPER by MCCORMACK, DAVID
19:36				ASSIST by AGBAJI, OCHAI
19:20	MISSED 3PTR by LAWRENCE, R.J.			
19:15				REBOUND (DEF) by MCCORMACK, DAVID
19:05		54-22	H 32	GOOD! 3PTR by GARRETT, MARCUS
18:44	MISSED JUMPER by WATERS, JR., DEJON			
18:41				REBOUND (DEF) by AZUBUIKE, UDOKA
18:37		56-22	H 34	GOOD! LAYUP by MCCORMACK, DAVID [FB]
18:37				ASSIST by DOTSON, DEVON
18:08	MISSED LAYUP by WOMACK, JAH-KOBE [PNT]			
18:05				REBOUND (DEF) by MCCORMACK, DAVID
18:01		59-22	H 37	GOOD! 3PTR by AGBAJI, OCHAI [FB]
18:01				ASSIST by DOTSON, DEVON
17:56	TIMEOUT 30SEC			
17:56				SUB OUT: GARRETT, MARCUS
17:56				SUB IN: ENARUNA, TRISTAN
17:56	SUB OUT: WOMACK, JAH-KOBE			
17:56	SUB OUT: WATERS, JR., DEJON			
17:56	SUB IN: GIVENS II, ANTONIO			
17:56	SUB IN: HARDING, GRANT			
17:38	MISSED JUMPER by GIVENS II, ANTONIO [PNT]			
17:38				BLOCK by AZUBUIKE, UDOKA
17:33				REBOUND (DEF) by AZUBUIKE, UDOKA
17:24		61-22	H 39	GOOD! DUNK by MCCORMACK, DAVID
17:24				ASSIST by ENARUNA, TRISTAN
16:49	MISSED 3PTR by LAWRENCE, R.J.			
16:45				REBOUND (DEF) by AZUBUIKE, UDOKA
16:29				MISSED 3PTR by ENARUNA, TRISTAN
16:24				REBOUND (OFF) by ENARUNA, TRISTAN
16:20	FOUL by EDMONDSON, CHRISTIAN			
16:20				MISSED FT by MCCORMACK, DAVID
16:20				REBOUND (DEADB) by TEAM
16:20				SUB OUT: AZUBUIKE, UDOKA
16:20				SUB IN: BRAUN, CHRISTIAN
16:20	SUB OUT: ELLIOTT, RAY			
16:20	SUB IN: JUSTICE, JALEN			
16:20		62-22	H 40	GOOD! FT by MCCORMACK, DAVID
16:00	MISSED JUMPER by LAWRENCE, R.J. [PNT]			
15:55	REBOUND (OFF) by GIVENS II, ANTONIO			
15:54				FOUL by AGBAJI, OCHAI
15:54	TIMEOUT MEDIA			
15:54	MISSED FT by EDMONDSON, CHRISTIAN			
15:54	REBOUND (DEADB) by TEAM			
15:54	MISSED FT by EDMONDSON, CHRISTIAN			
15:54				REBOUND (DEF) by ENARUNA, TRISTAN
15:27				MISSED 3PTR by AGBAJI, OCHAI
15:21				REBOUND (OFF) by ENARUNA, TRISTAN
15:20	FOUL by GIVENS II, ANTONIO [PNT]			
15:08				MISSED 3PTR by DOTSON, DEVON
15:04	REBOUND (DEF) by JUSTICE, JALEN			
14:59	TIMEOUT 30SEC			
14:59				SUB OUT: MCCORMACK, DAVID
14:59				SUB IN: DESOUSA, SILVIO
14:45				FOUL by DESOUSA, SILVIO [PNT]
14:45	GOOD! FT by GIVENS II, ANTONIO	62-23	H 39	
14:44	MISSED FT by GIVENS II, ANTONIO			
14:42				REBOUND (DEF) by DESOUSA, SILVIO
14:19		65-23	H 42	GOOD! 3PTR by DOTSON, DEVON

Time	VISITORS: Pittsburg St.	Score	Margin	HOME: Kansas
14:19				ASSIST by AGBAJI, OCHAI
13:57	TURNOVER by EDMONDSON, CHRISTIAN [PNT]			
13:57				STEAL by ENARUNA, TRISTAN
13:52		67-23	H 44	GOOD! LAYUP by DOTSON, DEVON [FB]
13:52				ASSIST by ENARUNA, TRISTAN
13:24	GOOD! 3PTR by HARDING, GRANT	67-26	H 41	
13:24	ASSIST by LAWRENCE, R.J.			
13:14		70-26	H 44	GOOD! 3PTR by BRAUN, CHRISTIAN
13:14				ASSIST by AGBAJI, OCHAI
12:59	MISSED JUMPER by HARDING, GRANT [PNT]			
12:59				BLOCK by DESOUSA, SILVIO
12:53				REBOUND (DEF) by DESOUSA, SILVIO
12:52		72-26	H 46	GOOD! LAYUP by DOTSON, DEVON [FB]
12:52				ASSIST by DESOUSA, SILVIO
12:29	MISSED 3PTR by JUSTICE, JALEN			
12:25				REBOUND (DEF) by DESOUSA, SILVIO
12:10				MISSED LAYUP by DESOUSA, SILVIO
12:07	REBOUND (DEF) by JUSTICE, JALEN			
12:00	GOOD! 3PTR by HARDING, GRANT	72-29	H 43	
12:00	ASSIST by JUSTICE, JALEN			
11:38	FOUL by GIVENS II, ANTONIO			
11:38	TIMEOUT MEDIA			
11:38				SUB OUT: DOTSON, DEVON
11:38				SUB OUT: AGBAJI, OCHAI
11:38				SUB IN: WILSON, JALEN
11:38				SUB IN: LIGHTFOOT, MITCH
11:38	SUB OUT: JUSTICE, JALEN			
11:38	SUB OUT: LAWRENCE, R.J.			
11:38	SUB OUT: GIVENS II, ANTONIO			
11:38	SUB IN: WOMACK, JAH-KOBE			
11:38	SUB IN: WATERS, JR., DEJON			
11:38	SUB IN: ROELFS, DREW			
11:38		73-29	H 44	GOOD! FT by ENARUNA, TRISTAN
11:38				MISSED FT by ENARUNA, TRISTAN
11:38				REBOUND (OFF) by DESOUSA, SILVIO
11:34				MISSED 3PTR by WILSON, JALEN
11:29	REBOUND (DEF) by TEAM			
11:01	TURNOVER by WOMACK, JAH-KOBE			
11:01				STEAL by LIGHTFOOT, MITCH
10:53		75-29	H 46	GOOD! JUMPER by LIGHTFOOT, MITCH [PNT]
10:53				ASSIST by ENARUNA, TRISTAN
10:25	MISSED LAYUP by EDMONDSON, CHRISTIAN [PNT]			
10:25				BLOCK by DESOUSA, SILVIO
10:20				REBOUND (DEF) by ENARUNA, TRISTAN
10:19	FOUL by HARDING, GRANT			
10:19		76-29	H 47	GOOD! FT by DESOUSA, SILVIO
10:19				MISSED FT by DESOUSA, SILVIO
10:19	REBOUND (DEF) by HARDING, GRANT			
10:15	TURNOVER by WOMACK, JAH-KOBE			
10:10	SUB OUT: WOMACK, JAH-KOBE			
10:10	SUB OUT: WATERS, JR., DEJON			
10:10	SUB IN: ELLIOTT, RAY			
10:10	SUB IN: LAWRENCE, R.J.			
10:00				MISSED LAYUP by ENARUNA, TRISTAN
09:54				REBOUND (OFF) by DESOUSA, SILVIO
09:54		78-29	H 49	GOOD! LAYUP by DESOUSA, SILVIO
09:35	MISSED 3PTR by ROELFS, DREW			
09:28	REBOUND (OFF) by HARDING, GRANT			
09:28	MISSED LAYUP by HARDING, GRANT			
09:27				REBOUND (DEF) by WILSON, JALEN
09:24		81-29	H 52	GOOD! 3PTR by ENARUNA, TRISTAN [FB]
09:24				ASSIST by BRAUN, CHRISTIAN
09:13	GOOD! LAYUP by EDMONDSON, CHRISTIAN	81-31	H 50	
09:13	ASSIST by LAWRENCE, R.J.			
08:55		83-31	H 52	GOOD! JUMPER by DESOUSA, SILVIO [PNT]
08:31				SUB OUT: DESOUSA, SILVIO
08:31				SUB IN: AZUBUIKE, UDOKA
08:30	TURNOVER by LAWRENCE, R.J.			
08:30				STEAL by AZUBUIKE, UDOKA
08:25		85-31	H 54	GOOD! DUNK by ENARUNA, TRISTAN [FB]
08:05	MISSED 3PTR by LAWRENCE, R.J.			
08:01				REBOUND (DEF) by ENARUNA, TRISTAN
07:58				MISSED 3PTR by BRAUN, CHRISTIAN
07:54				REBOUND (OFF) by AZUBUIKE, UDOKA
07:54	FOUL by EDMONDSON, CHRISTIAN			
07:54	TIMEOUT MEDIA			
07:54	SUB OUT: HARDING, GRANT			
07:54	SUB OUT: EDMONDSON, CHRISTIAN			
07:54	SUB IN: GIVENS II, ANTONIO			
07:54	SUB IN: HARTLOFF, LAYTON			

Time	VISITORS: Pittsburg St.	Score	Margin	HOME: Kansas
07:54				MISSED FT by AZUBUIKE, UDOKA
07:54				REBOUND (DEADB) by TEAM
07:54				MISSED FT by AZUBUIKE, UDOKA
07:54	REBOUND (DEF) by ELLIOTT, RAY			
07:41	MISSED 3PTR by HARTLOFF, LAYTON			
07:37				REBOUND (DEF) by AZUBUIKE, UDOKA
07:28		88-31	H 57	GOOD! 3PTR by WILSON, JALEN
07:28				ASSIST by ENARUNA, TRISTAN
07:10	MISSED 3PTR by ELLIOTT, RAY			
07:07				REBOUND (DEF) by ENARUNA, TRISTAN
06:59				TURNOVER by AZUBUIKE, UDOKA [PNT]
06:59	STEAL by LAWRENCE, R.J.			
06:47	GOOD! LAYUP by GIVENS II, ANTONIO	88-33	H 55	
06:47	ASSIST by LAWRENCE, R.J.			
06:38		91-33	H 58	GOOD! 3PTR by LIGHTFOOT, MITCH
06:38				ASSIST by ENARUNA, TRISTAN
06:09	GOOD! 3PTR by ROELFS, DREW	91-36	H 55	
06:09	ASSIST by HARTLOFF, LAYTON			
05:51				MISSED 3PTR by LIGHTFOOT, MITCH
05:47	REBOUND (DEF) by ELLIOTT, RAY			
05:41	MISSED 3PTR by ELLIOTT, RAY			
05:38				REBOUND (DEF) by ENARUNA, TRISTAN
05:28		94-36	H 58	GOOD! 3PTR by BRAUN, CHRISTIAN
05:08	TURNOVER by ELLIOTT, RAY			
05:08				SUB OUT: AZUBUIKE, UDOKA
05:08				SUB IN: TEAHAN, CHRIS
04:52		97-36	H 61	GOOD! 3PTR by BRAUN, CHRISTIAN
04:29	TURNOVER by GIVENS II, ANTONIO			
04:29	SUB OUT: ELLIOTT, RAY			
04:29	SUB OUT: GIVENS II, ANTONIO			
04:29	SUB IN: WATERS, JR., DEJON			
04:29	SUB IN: HOLLOWAY, ETHAN			
04:13				TURNOVER by WILSON, JALEN
04:07	TURNOVER by LAWRENCE, R.J. [PNT]			
04:07				STEAL by BRAUN, CHRISTIAN
04:03				TURNOVER by BRAUN, CHRISTIAN
04:03				SUB OUT: ENARUNA, TRISTAN
04:03				SUB IN: ELLIOTT, ELIJAH
03:46	GOOD! 3PTR by ROELFS, DREW	97-39	H 58	
03:46	ASSIST by WATERS, JR., DEJON			
03:33				MISSED JUMPER by LIGHTFOOT, MITCH [PNT]
03:31	REBOUND (DEF) by HOLLOWAY, ETHAN			
03:31				FOUL by LIGHTFOOT, MITCH
03:31	TIMEOUT MEDIA			
03:31	SUB OUT: WATERS, JR., DEJON			
03:31	SUB IN: JUSTICE, JALEN			
03:05	MISSED 3PTR by JUSTICE, JALEN			
03:01				REBOUND (DEF) by ELLIOTT, ELIJAH
02:49				MISSED 3PTR by ELLIOTT, ELIJAH
02:46	REBOUND (DEF) by JUSTICE, JALEN			
02:40	MISSED 3PTR by LAWRENCE, R.J.			
02:36				REBOUND (DEF) by BRAUN, CHRISTIAN
02:30				MISSED 3PTR by TEAHAN, CHRIS
02:30	REBOUND (DEADB) by TEAM			
02:30				SUB OUT: BRAUN, CHRISTIAN
02:30				SUB IN: ENARUNA, TRISTAN
02:30	SUB OUT: LAWRENCE, R.J.			
02:30	SUB IN: WOMACK, JAH-KOBE			
02:19	GOOD! 3PTR by ROELFS, DREW	97-42	H 55	
02:19	ASSIST by HARTLOFF, LAYTON			
02:03				MISSED 3PTR by WILSON, JALEN
01:59	REBOUND (DEF) by HARTLOFF, LAYTON			
01:40	MISSED 3PTR by ROELFS, DREW			
01:36				REBOUND (DEF) by LIGHTFOOT, MITCH
01:32				SUB OUT: ENARUNA, TRISTAN
01:32				SUB IN: JANKOVICH, MICHAEL
01:15		99-42	H 57	GOOD! by LIGHTFOOT, MITCH [PNT]
00:57	MISSED LAYUP by HARTLOFF, LAYTON			
00:57				BLOCK by LIGHTFOOT, MITCH
00:52				REBOUND (DEF) by WILSON, JALEN
00:51		102-42	H 60	GOOD! 3PTR by JANKOVICH, MICHAEL [FB]
00:51				ASSIST by WILSON, JALEN
00:40	MISSED 3PTR by WOMACK, JAH-KOBE			
00:36				REBOUND (DEF) by TEAHAN, CHRIS
00:31				MISSED 3PTR by TEAHAN, CHRIS
00:27				REBOUND (OFF) by LIGHTFOOT, MITCH

Pittsburg St. 42, Kansas 102

Points from (This Period)	Pitt	Kan
In the Paint	4	18
Off Turns	5	11
2nd Chance	0	3
Fast Break	0	17
Bench	18	33

Official Scoring/Possession Reference Chart
Pittsburg St. vs Kansas
Period 1
November 01, 2019 at Allen Fieldhouse



Period 1

Starters:

Pittsburg St.: 3 WOMACK, JAH-KOBE (G); 4 ELLIOTT, RAY (G); 12 WATERS, JR., DEJON (F); 14 LAWRENCE, R.J. (G); 33 EDMONDSON, CHRISTIAN (F);
Kansas: 00 GARRETT, MARCUS (G); 1 DOTSON, DEVON (G); 30 AGBAJI, OCHAI (G); 33 MCCORMACK, DAVID (F); 35 AZUBUIKE, UDOKA (C);

Time	VISITORS: Pittsburg St.	Score	Margin	HOME: Kansas
19:17		2-0	H 2	GOOD! LAYUP by MCCORMACK, DAVID
18:59	GOOD! JUMPER by EDMONDSON, CHRISTIAN	2-2	T	
18:47		4-2	H 2	GOOD! DUNK by AZUBUIKE, UDOKA
18:20		6-2	H 4	GOOD! DUNK by MCCORMACK, DAVID
17:44		8-2	H 6	GOOD! LAYUP by MCCORMACK, DAVID [PNT]
17:23		10-2	H 8	GOOD! DUNK by AGBAJI, OCHAI [FB]
16:25	GOOD! JUMPER by WATERS, JR., DEJON	10-4	H 6	
15:52		13-4	H 9	GOOD! 3PTR by AGBAJI, OCHAI
15:23		15-4	H 11	GOOD! LAYUP by GARRETT, MARCUS [FB]
14:57		17-4	H 13	GOOD! LAYUP by AGBAJI, OCHAI [FB]
14:19		18-4	H 14	GOOD! FT by DOTSON, DEVON
14:19		19-4	H 15	GOOD! FT by DOTSON, DEVON
13:56		22-4	H 18	GOOD! 3PTR by MOSS, ISIAH
13:21		24-4	H 20	GOOD! DUNK by AZUBUIKE, UDOKA
12:55	GOOD! FT by WOMACK, JAH-KOBE	24-5	H 19	
12:55	GOOD! FT by WOMACK, JAH-KOBE	24-6	H 18	
11:22		26-6	H 20	GOOD! DUNK by DESOUSA, SILVIO
11:16	GOOD! JUMPER by LAWRENCE, R.J.	26-8	H 18	
10:54		28-8	H 20	GOOD! LAYUP by LIGHTFOOT, MITCH [PNT]
09:35		31-8	H 23	GOOD! 3PTR by DOTSON, DEVON
08:49		33-8	H 25	GOOD! LAYUP by DESOUSA, SILVIO
08:35	GOOD! JUMPER by WATERS, JR., DEJON	33-10	H 23	
07:58	GOOD! 3PTR by HARDING, GRANT	33-13	H 20	
07:28		36-13	H 23	GOOD! 3PTR by ENARUNA, TRISTAN
07:01	GOOD! LAYUP by LAWRENCE, R.J.	36-15	H 21	
06:37	GOOD! 3PTR by WATERS, JR., DEJON [FB]	36-18	H 18	
05:06		38-18	H 20	GOOD! DUNK by AZUBUIKE, UDOKA [PNT]
04:50	GOOD! JUMPER by LAWRENCE, R.J.	38-20	H 18	
03:21		40-20	H 20	GOOD! LAYUP by AZUBUIKE, UDOKA
03:00		43-20	H 23	GOOD! 3PTR by AGBAJI, OCHAI [FB]
02:35		46-20	H 26	GOOD! 3PTR by AGBAJI, OCHAI
00:41		49-20	H 29	GOOD! 3PTR by AGBAJI, OCHAI [FB]
00:18	GOOD! JUMPER by WOMACK, JAH-KOBE [PNT]	49-22	H 27	

Pittsburg St. 22, Kansas 49

Official Scoring/Possession Reference Chart
Pittsburg St. vs Kansas
Period 2
November 01, 2019 at Allen Fieldhouse



Period 2

Starters:

Pittsburg St.: 3 WOMACK, JAH-KOBE (G); 4 ELLIOTT, RAY (G); 12 WATERS, JR., DEJON (F); 14 LAWRENCE, R.J. (G); 33 EDMONDSON, CHRISTIAN (F);
Kansas: 00 GARRETT, MARCUS (G); 1 DOTSON, DEVON (G); 30 AGBAJI, OCHAI (G); 33 MCCORMACK, DAVID (F); 35 AZUBUIKE, UDOKA (C);

Time	VISITORS: Pittsburg St.	Score	Margin	HOME: Kansas
19:36		51-22	H 29	GOOD! JUMPER by MCCORMACK, DAVID
19:05		54-22	H 32	GOOD! 3PTR by GARRETT, MARCUS
18:37		56-22	H 34	GOOD! LAYUP by MCCORMACK, DAVID [FB]
18:01		59-22	H 37	GOOD! 3PTR by AGBAJI, OCHAI [FB]
17:24		61-22	H 39	GOOD! DUNK by MCCORMACK, DAVID
16:20		62-22	H 40	GOOD! FT by MCCORMACK, DAVID
14:45	GOOD! FT by GIVENS II, ANTONIO	62-23	H 39	
14:19		65-23	H 42	GOOD! 3PTR by DOTSON, DEVON
13:52		67-23	H 44	GOOD! LAYUP by DOTSON, DEVON [FB]
13:24	GOOD! 3PTR by HARDING, GRANT	67-26	H 41	
13:14		70-26	H 44	GOOD! 3PTR by BRAUN, CHRISTIAN
12:52		72-26	H 46	GOOD! LAYUP by DOTSON, DEVON [FB]
12:00	GOOD! 3PTR by HARDING, GRANT	72-29	H 43	
11:38		73-29	H 44	GOOD! FT by ENARUNA, TRISTAN
10:53		75-29	H 46	GOOD! JUMPER by LIGHTFOOT, MITCH [PNT]
10:19		76-29	H 47	GOOD! FT by DESOUSA, SILVIO
09:54		78-29	H 49	GOOD! LAYUP by DESOUSA, SILVIO
09:24		81-29	H 52	GOOD! 3PTR by ENARUNA, TRISTAN [FB]
09:13	GOOD! LAYUP by EDMONDSON, CHRISTIAN	81-31	H 50	
08:55		83-31	H 52	GOOD! JUMPER by DESOUSA, SILVIO [PNT]
08:25		85-31	H 54	GOOD! DUNK by ENARUNA, TRISTAN [FB]
07:28		88-31	H 57	GOOD! 3PTR by WILSON, JALEN
06:47	GOOD! LAYUP by GIVENS II, ANTONIO	88-33	H 55	
06:38		91-33	H 58	GOOD! 3PTR by LIGHTFOOT, MITCH
06:09	GOOD! 3PTR by ROELFS, DREW	91-36	H 55	
05:28		94-36	H 58	GOOD! 3PTR by BRAUN, CHRISTIAN
04:52		97-36	H 61	GOOD! 3PTR by BRAUN, CHRISTIAN
03:46	GOOD! 3PTR by ROELFS, DREW	97-39	H 58	
02:19	GOOD! 3PTR by ROELFS, DREW	97-42	H 55	
01:15		99-42	H 57	GOOD! by LIGHTFOOT, MITCH [PNT]
00:51		102-42	H 60	GOOD! 3PTR by JANKOVICH, MICHAEL [FB]

Pittsburg St. 42, Kansas 102

**Official Substitutions Log
Pittsburg St. vs Kansas
Period 1
November 01, 2019 at Allen Fieldhouse**



VISITORS: Pittsburg St.	Time	Score	HOME: Kansas
3 WOMACK, JAH-KOBE			00 GARRETT, MARCUS
4 ELLIOTT, RAY			1 DOTSON, DEVON
12 WATERS, JR., DEJON			30 AGBAJI, OCHAI
14 LAWRENCE, R.J.			33 MCCORMACK, DAVID
33 EDMONDSON, CHRISTIAN			35 AZUBUIKE, UDOKA
SUB OUT: 14 LAWRENCE, R.J.	15:58	4-10	
SUB IN: 15 GIVENS II, ANTONIO	15:58		
	14:19	4-18	SUB OUT: GARRETT, MARCUS
	14:19		SUB OUT: AGBAJI, OCHAI
	14:19		SUB OUT: MCCORMACK, DAVID
	14:19		SUB IN: BRAUN, CHRISTIAN
	14:19		SUB IN: MOSS, ISAIAH
	14:19		SUB IN: DESOUSA, SILVIO
SUB OUT: 12 WATERS, JR., DEJON	14:19		
SUB IN: 14 LAWRENCE, R.J.	14:19		
	12:55	5-24	SUB OUT: DOTSON, DEVON
	12:55		SUB OUT: AZUBUIKE, UDOKA
	12:55		SUB IN: GARRETT, MARCUS
	12:55		SUB IN: LIGHTFOOT, MITCH
SUB OUT: 3 WOMACK, JAH-KOBE	12:55		
SUB IN: 5 JUSTICE, JALEN	12:55		
SUB OUT: 4 ELLIOTT, RAY	11:55	6-24	
SUB OUT: 33 EDMONDSON, CHRISTIAN	11:55		
SUB IN: 12 WATERS, JR., DEJON	11:55		
SUB IN: 22 HARDING, GRANT	11:55		
	10:33	8-28	SUB OUT: MOSS, ISAIAH
	10:33		SUB OUT: LIGHTFOOT, MITCH
	10:33		SUB IN: WILSON, JALEN
	10:33		SUB IN: ENARUNA, TRISTAN
	09:48	8-28	SUB OUT: GARRETT, MARCUS
	09:48		SUB IN: DOTSON, DEVON
SUB OUT: 5 JUSTICE, JALEN	09:00	8-31	
SUB OUT: 15 GIVENS II, ANTONIO	09:00		
SUB IN: 3 WOMACK, JAH-KOBE	09:00		
SUB IN: 33 EDMONDSON, CHRISTIAN	09:00		
	08:08	10-33	SUB OUT: BRAUN, CHRISTIAN
	08:08		SUB OUT: DESOUSA, SILVIO
	08:08		SUB IN: AGBAJI, OCHAI
	08:08		SUB IN: AZUBUIKE, UDOKA
	06:08	18-36	SUB OUT: WILSON, JALEN
	06:08		SUB IN: GARRETT, MARCUS
SUB OUT: 3 WOMACK, JAH-KOBE	06:08		
SUB IN: 4 ELLIOTT, RAY	06:08		
	04:39	20-38	SUB OUT: ENARUNA, TRISTAN
	04:39		SUB IN: MCCORMACK, DAVID
	01:11	20-46	SUB OUT: GARRETT, MARCUS
	01:11		SUB OUT: MCCORMACK, DAVID
	01:11		SUB OUT: AZUBUIKE, UDOKA
	01:11		SUB IN: BRAUN, CHRISTIAN
	01:11		SUB IN: MOSS, ISAIAH
	01:11		SUB IN: DESOUSA, SILVIO
SUB OUT: 12 WATERS, JR., DEJON	01:11		
SUB OUT: 14 LAWRENCE, R.J.	01:11		
SUB OUT: 33 EDMONDSON, CHRISTIAN	01:11		
SUB IN: 3 WOMACK, JAH-KOBE	01:11		
SUB IN: 15 GIVENS II, ANTONIO	01:11		
SUB IN: 21 HARTLOFF, LAYTON	01:11		

Pittsburg St. 22, Kansas 49

**Official Substitutions Log
Pittsburg St. vs Kansas
Period 2
November 01, 2019 at Allen Fieldhouse**



VISITORS: Pittsburg St.	Time	Score	HOME: Kansas
3 WOMACK, JAH-KOBE			00 GARRETT, MARCUS
4 ELLIOTT, RAY			1 DOTSON, DEVON
12 WATERS, JR., DEJON			30 AGBAJI, OCHAI
14 LAWRENCE, R.J.			33 MCCORMACK, DAVID
33 EDMONDSON, CHRISTIAN			35 AZUBUIKE, UDOKA
	20:00	-	SUB OUT: BRAUN, CHRISTIAN
	20:00		SUB OUT: MOSS, ISIAH
	20:00		SUB OUT: DESOUSA, SILVIO
	20:00		SUB IN: GARRETT, MARCUS
	20:00		SUB IN: MCCORMACK, DAVID
	20:00		SUB IN: AZUBUIKE, UDOKA
SUB OUT: 15 GIVENS II, ANTONIO	20:00		
SUB OUT: 21 HARTLOFF, LAYTON	20:00		
SUB OUT: 22 HARDING, GRANT	20:00		
SUB IN: 12 WATERS, JR., DEJON	20:00		
SUB IN: 14 LAWRENCE, R.J.	20:00		
SUB IN: 33 EDMONDSON, CHRISTIAN	20:00		
	17:56	22-59	SUB OUT: GARRETT, MARCUS
	17:56		SUB IN: ENARUNA, TRISTAN
SUB OUT: 3 WOMACK, JAH-KOBE	17:56		
SUB OUT: 12 WATERS, JR., DEJON	17:56		
SUB IN: 15 GIVENS II, ANTONIO	17:56		
SUB IN: 22 HARDING, GRANT	17:56		
	16:20	22-61	SUB OUT: AZUBUIKE, UDOKA
	16:20		SUB IN: BRAUN, CHRISTIAN
SUB OUT: 4 ELLIOTT, RAY	16:20		
SUB IN: 5 JUSTICE, JALEN	16:20		
	14:59	22-62	SUB OUT: MCCORMACK, DAVID
	14:59		SUB IN: DESOUSA, SILVIO
	11:38	29-72	SUB OUT: DOTSON, DEVON
	11:38		SUB OUT: AGBAJI, OCHAI
	11:38		SUB IN: WILSON, JALEN
	11:38		SUB IN: LIGHTFOOT, MITCH
SUB OUT: 5 JUSTICE, JALEN	11:38		
SUB OUT: 14 LAWRENCE, R.J.	11:38		
SUB OUT: 15 GIVENS II, ANTONIO	11:38		
SUB IN: 3 WOMACK, JAH-KOBE	11:38		
SUB IN: 12 WATERS, JR., DEJON	11:38		
SUB IN: 23 ROELFS, DREW	11:38		
SUB OUT: 3 WOMACK, JAH-KOBE	10:10	29-76	
SUB OUT: 12 WATERS, JR., DEJON	10:10		
SUB IN: 4 ELLIOTT, RAY	10:10		
SUB IN: 14 LAWRENCE, R.J.	10:10		
	08:31	31-83	SUB OUT: DESOUSA, SILVIO
	08:31		SUB IN: AZUBUIKE, UDOKA
SUB OUT: 22 HARDING, GRANT	07:54	31-85	
SUB OUT: 33 EDMONDSON, CHRISTIAN	07:54		
SUB IN: 15 GIVENS II, ANTONIO	07:54		
SUB IN: 21 HARTLOFF, LAYTON	07:54		
	05:08	36-94	SUB OUT: AZUBUIKE, UDOKA
	05:08		SUB IN: TEAHAN, CHRIS
SUB OUT: 4 ELLIOTT, RAY	04:29	36-97	
SUB OUT: 15 GIVENS II, ANTONIO	04:29		
SUB IN: 12 WATERS, JR., DEJON	04:29		
SUB IN: 20 HOLLOWAY, ETHAN	04:29		
	04:03	36-97	SUB OUT: ENARUNA, TRISTAN
	04:03		SUB IN: ELLIOTT, ELIJAH
SUB OUT: 12 WATERS, JR., DEJON	03:31	39-97	
SUB IN: 5 JUSTICE, JALEN	03:31		
	02:30	39-97	SUB OUT: BRAUN, CHRISTIAN
	02:30		SUB IN: ENARUNA, TRISTAN
SUB OUT: 14 LAWRENCE, R.J.	02:30		
SUB IN: 3 WOMACK, JAH-KOBE	02:30		
	01:32	42-97	SUB OUT: ENARUNA, TRISTAN
	01:32		SUB IN: JANKOVICH, MICHAEL

Pittsburg St. 42, Kansas 102

Official Shot Chart
Pittsburg St. vs Kansas
PERIOD 1 Shots
November 01, 2019 at Allen Fieldhouse

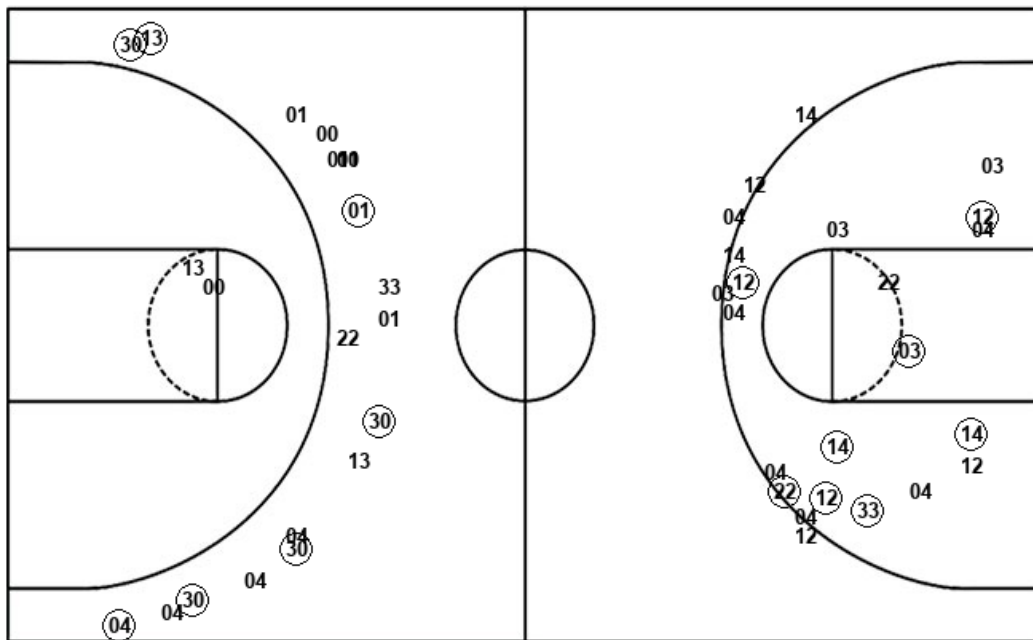


Kansas

Pittsburg St.

Layups
 33 33 00 30 01
 22 44 22 13 01
 13 01 35 01

Dunks
 35 33 30 35 22
 35



Layups
 04 33 33 12 04
 14 04 04 22

Dunks

Kan : Period 1	Made	Att	Pct
Layups	7	14	50.0
Dunks	6	6	100.0
2PT Field Goals	13	23	56.5
3PT Field Goals	7	18	38.9
Total Field Goals	20	41	48.8

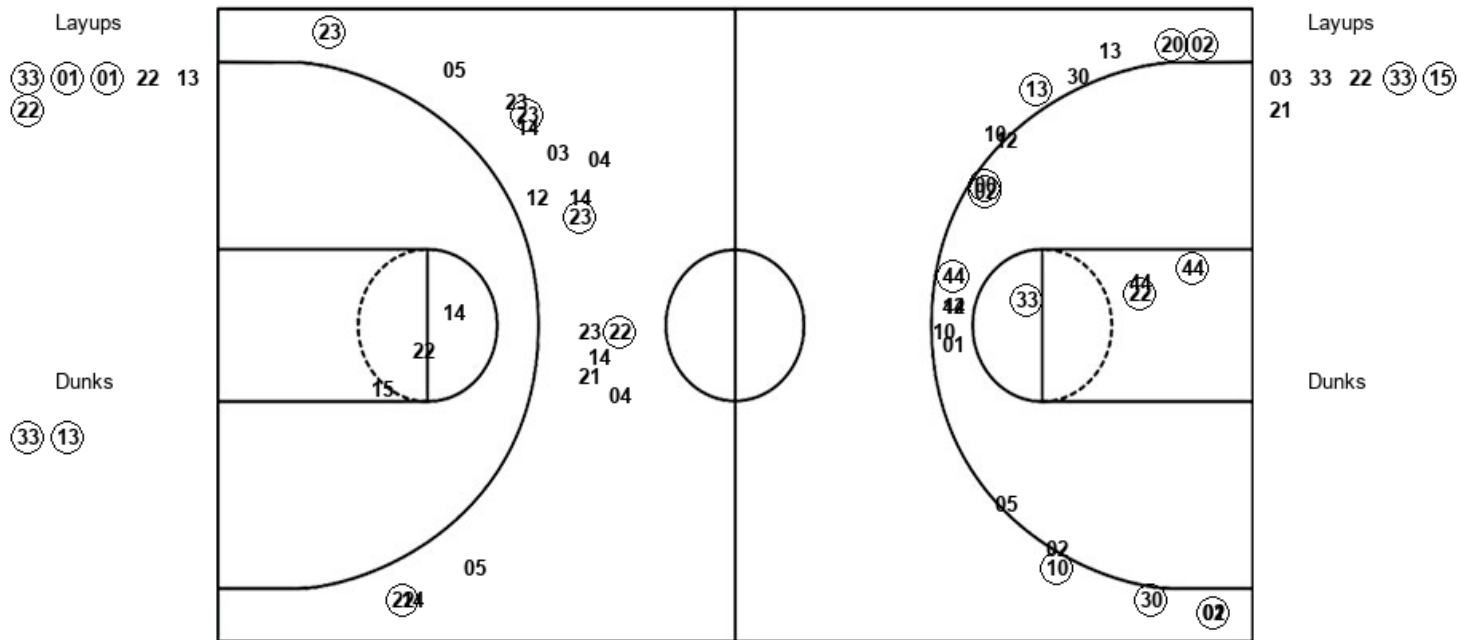
Pitt : Period 1	Made	Att	Pct
Layups	1	9	11.1
Dunks	0	0	0
2PT Field Goals	7	21	33.3
3PT Field Goals	2	11	18.2
Total Field Goals	9	32	28.1

Official Shot Chart
Pittsburg St. vs Kansas
PERIOD 2 Shots
November 01, 2019 at Allen Fieldhouse



Kansas

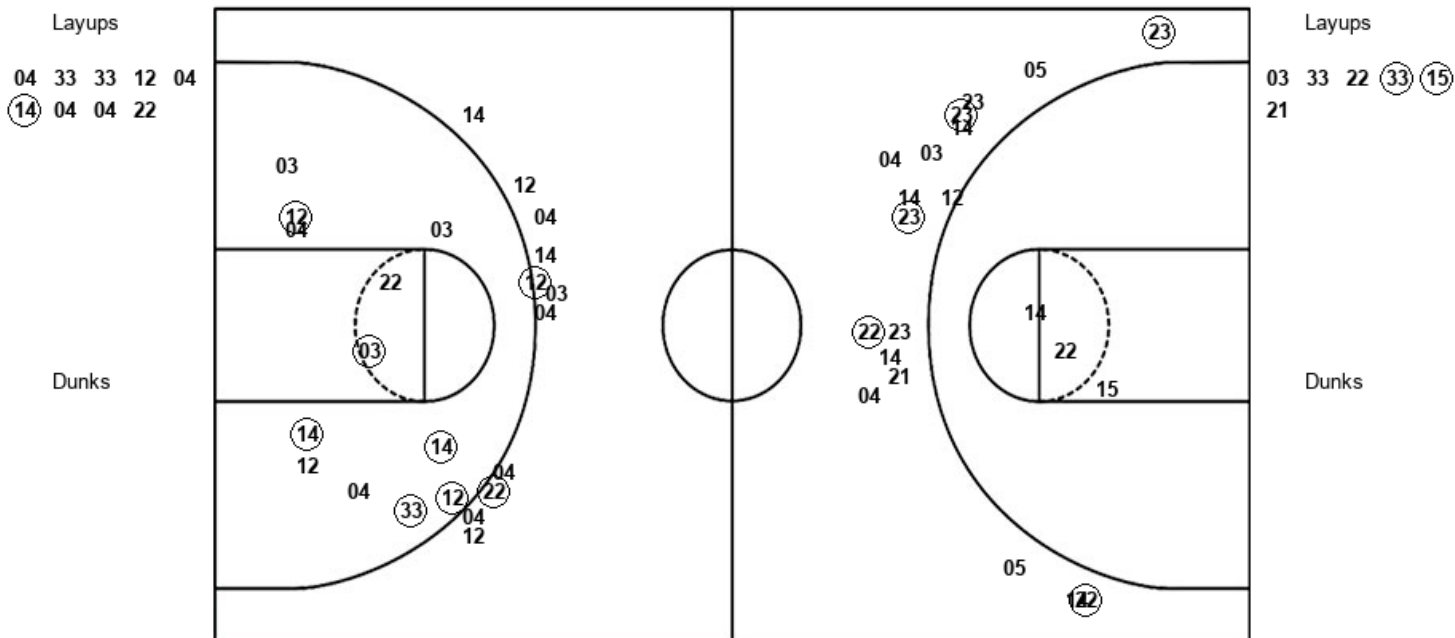
Pittsburg St.



Kan : Period 2	Made	Att	Pct
Layups	4	6	66.7
Dunks	2	2	100.0
2PT Field Goals	10	13	76.9
3PT Field Goals	10	20	50.0
Total Field Goals	20	33	60.6

Pitt : Period 2	Made	Att	Pct
Layups	2	6	33.3
Dunks	0	0	0
2PT Field Goals	2	10	20.0
3PT Field Goals	5	17	29.4
Total Field Goals	7	27	25.9

Official Shot Chart
Pittsburg St. vs Kansas
Pittsburg St. Team Shots
November 01, 2019 at Allen Fieldhouse



Pitt : Period 1	Made	Att	Pct
Layups	1	9	11.1
Dunks	0	0	0
2PT Field Goals	7	21	33.3
3PT Field Goals	2	11	18.2
Total Field Goals	9	32	28.1

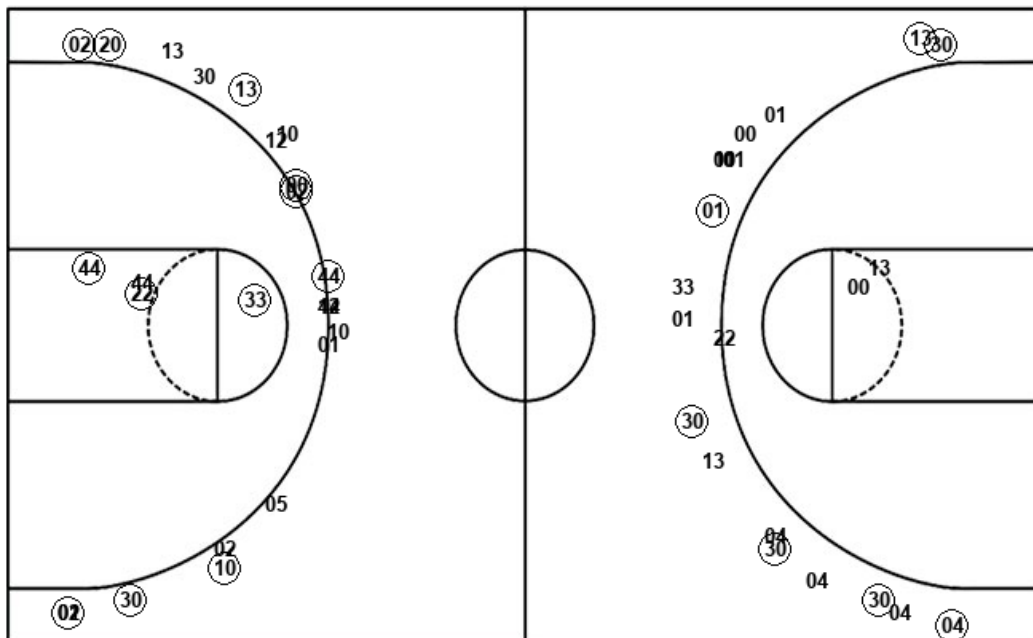
Pitt : Period 2	Made	Att	Pct
Layups	2	6	33.3
Dunks	0	0	0
2PT Field Goals	2	10	20.0
3PT Field Goals	5	17	29.4
Total Field Goals	7	27	25.9

Official Shot Chart
Pittsburg St. vs Kansas
Kansas Team Shots
November 01, 2019 at Allen Fieldhouse



Layups
 33 01 01 22 13
 22

Dunks
 33 13



Layups
 33 33 00 30 01
 22 44 22 13 01
 13 01 35 01

Dunks
 35 33 30 35 22
 35

Kan : Period 1	Made	Att	Pct
Layups	7	14	50.0
Dunks	6	6	100.0
2PT Field Goals	13	23	56.5
3PT Field Goals	7	18	38.9
Total Field Goals	20	41	48.8

Kan : Period 2	Made	Att	Pct
Layups	4	6	66.7
Dunks	2	2	100.0
2PT Field Goals	10	13	76.9
3PT Field Goals	10	20	50.0
Total Field Goals	20	33	60.6