

## FINAL SCORE



**Kansas**

**55**



**Villanova**

**56**

December 21, 2019 • Wells Fargo Center (sellout) - Philadelphia

## FINAL STATISTICS

**Official Box Score**  
**Kansas vs Villanova**  
**Game Totals -- Final Statistics**  
**December 21, 2019 at Wells Fargo Center (sellout) - Philadelphia**



**Kansas 55**

No.	Player	S	Pts	FG	3FG	FT	OR	DR	TR	PF	A	TO	Blk	Stl	Min	+/-
00	GARRETT, MARCUS	G	2	1-4	0-1	0-0	1	1	2	0	1	0	0	1	13	7
01	DOTSON, DEVON	G	15	5-15	1-2	4-7	0	7	7	1	4	3	0	1	37	0
30	AGBAJI, OCHAI	G	11	5-8	1-4	0-0	0	2	2	2	4	2	0	3	39	-1
33	MCCORMACK, DAVID	F	6	3-7	0-0	0-0	2	5	7	1	1	2	0	1	25	-10
35	AZUBUIKE, UDOKA	C	12	6-10	0-0	0-2	2	9	11	3	2	2	2	0	30	1
02	BRAUN, CHRISTIAN	G	6	3-5	0-2	0-1	0	2	2	2	0	0	1	0	16	-1
04	MOSS, ISAIAH	G	0	0-5	0-3	0-0	0	0	0	1	0	2	0	0	15	-4
13	ENARUNA, TRISTAN	F	3	1-1	1-1	0-0	2	1	3	1	2	0	1	0	20	4
22	DESOUSA, SILVIO	F	0	0-0	0-0	0-0	0	0	0	1	0	1	1	0	3	-1
TEAM							3	4	7	0		0				
<b>TOTALS</b>			<b>55</b>	<b>24-55</b>	<b>3-13</b>	<b>4-10</b>	<b>10</b>	<b>31</b>	<b>41</b>	<b>12</b>	<b>14</b>	<b>12</b>	<b>5</b>	<b>6</b>	<b>200</b>	

*Shooting By Period*

Period	FG	FG%	3FG	3FG%	FT	FT%
1st Half	10-27	37%	2-8	25%	1-4	25%
2nd Half	14-28	50%	1-5	20%	3-6	50%
<b>Game</b>	<b>24-55</b>	<b>43.6%</b>	<b>3-13</b>	<b>23.1%</b>	<b>4-10</b>	<b>40.0%</b>

Deadball Rebounds: 1,0  
 Last FG: 2nd-01:49  
 Biggest Run: 7-0  
 Largest lead: By 7 at 1-10  
 Technical Fouls: None.

**Villanova 56**

No.	Player	S	Pts	FG	3FG	FT	OR	DR	TR	PF	A	TO	Blk	Stl	Min	+/-
02	GILLESPIE, COLLIN	G	12	5-15	2-10	0-0	0	3	3	3	2	1	0	2	35	3
10	SWIDER, COLE	F	5	2-4	1-2	0-0	0	1	1	1	0	0	0	0	25	-5
23	SAMUELS, JERMAINE	F	15	6-12	3-8	0-0	2	3	5	3	1	1	0	1	34	7
24	ROBINSON-EARL, JEREMIAH	F	9	3-11	1-6	2-2	3	6	9	0	2	3	0	1	32	-7
41	BEY, SADDIQ	F	7	3-8	1-5	0-0	2	5	7	4	5	1	0	0	33	0
03	SLATER, BRANDON	F	0	0-1	0-1	0-0	1	0	1	1	1	0	0	1	8	5
05	MOORE, JUSTIN	G	8	3-12	2-9	0-0	0	3	3	1	3	2	0	1	33	3
21	COSBY-ROUNDTREE, DHAMIF	F	0	0-0	0-0	0-0	0	0	0	1	0	0	0	0	0	-1
TEAM							2	5	7	0		1				
<b>TOTALS</b>			<b>56</b>	<b>22-63</b>	<b>10-41</b>	<b>2-2</b>	<b>10</b>	<b>26</b>	<b>36</b>	<b>14</b>	<b>14</b>	<b>9</b>	<b>0</b>	<b>6</b>	<b>200</b>	

*Shooting By Period*

Period	FG	FG%	3FG	3FG%	FT	FT%
1st Half	9-31	29%	5-21	24%	0-0	0%
2nd Half	13-32	41%	5-20	25%	2-2	100%
<b>Game</b>	<b>22-63</b>	<b>34.9%</b>	<b>10-41</b>	<b>24.4%</b>	<b>2-2</b>	<b>100.0%</b>

Deadball Rebounds: 0,0  
 Last FG: 2nd-00:20  
 Biggest Run: 10-0  
 Largest lead: By 8 at 2-14  
 Technical Fouls: None.

Game Notes:

Officials: Mike Stephens, Ray Natili, Brent Hampton  
 Attendance: 20706

Start Time: 12:01 PM ET  
 End Time: 02:07 PM ET  
 Game Duration: 2:05

Score	1st	2nd	TOT
KAN	23	32	55
VIL	23	33	56

KAN led for 16:07. VIL led for 15:43.  
 Game was tied for 8:11.  
 Times tied: 10      Lead Changes: 14

Points from	KAN	VIL
In the Paint	38	20
Off Turns	6	10
2nd Chance	5	10
Fast Break	8	5
Bench	9	8

**Official Box Score**  
**Kansas vs Villanova**  
**First Half Statistics Only**  
**December 21, 2019 at Wells Fargo Center (sellout) - Philadelphia**



**Kansas 23**

No.	Player	S	Pts	FG	3FG	FT	OR	DR	TR	PF	A	TO	Blk	Stl	Min	+/-
00	GARRETT, MARCUS	G	2	1-4	0-1	0-0	1	1	2	0	1	0	0	1	13	7
01	DOTSON, DEVON	G	5	2-5	0-0	1-2	0	5	5	1	0	1	0	0	17	1
30	AGBAJI, OCHAI	G	3	1-4	1-4	0-0	0	1	1	0	4	1	0	3	19	0
33	MCCORMACK, DAVID	F	4	2-4	0-0	0-0	1	3	4	1	0	1	0	0	14	-3
35	AZUBUIKE, UDOKA	C	6	3-6	0-0	0-2	2	5	7	2	1	2	1	0	16	1
02	BRAUN, CHRISTIAN	G	0	0-0	0-0	0-0	0	0	0	1	0	0	0	0	1	-6
04	MOSS, ISIAHAH	G	0	0-3	0-2	0-0	0	0	0	0	0	1	0	0	10	2
13	ENARUNA, TRISTAN	F	3	1-1	1-1	0-0	0	0	0	0	0	0	0	0	6	-1
22	DESOUSA, SILVIO	F	0	0-0	0-0	0-0	0	0	0	1	0	1	1	0	3	-1
TEAM							1	2	3	0		0				
<b>TOTALS</b>			<b>23</b>	<b>10-27</b>	<b>2-8</b>	<b>1-4</b>	<b>5</b>	<b>17</b>	<b>22</b>	<b>6</b>	<b>6</b>	<b>7</b>	<b>2</b>	<b>4</b>	<b>100</b>	

*Shooting By Period*

Period	FG	FG%	3FG	3FG%	FT	FT%
1st Half	10-27	37%	2-8	25%	1-4	25%
Game	24-55	43.6%	3-13	23.1%	4-10	40.0%

*Deadball Rebounds: 1,0*  
*Last FG Half: KAN 2nd-01:49*

**Villanova 23**

No.	Player	S	Pts	FG	3FG	FT	OR	DR	TR	PF	A	TO	Blk	Stl	Min	+/-
02	GILLESPIE, COLLIN	G	3	1-7	1-5	0-0	0	1	1	1	0	1	0	1	16	2
10	SWIDER, COLE	F	5	2-4	1-2	0-0	0	1	1	1	0	0	0	0	16	-1
23	SAMUELS, JERMAINE	F	3	1-3	1-3	0-0	0	1	1	1	0	1	0	0	15	2
24	ROBINSON-EARL, JEREMIAH	F	2	1-3	0-1	0-0	3	3	6	0	1	3	0	0	17	-5
41	BEY, SADDIQ	F	2	1-4	0-3	0-0	1	4	5	2	2	0	0	0	15	-3
03	SLATER, BRANDON	F	0	0-1	0-1	0-0	0	0	0	0	1	0	0	1	6	4
05	MOORE, JUSTIN	G	8	3-9	2-6	0-0	0	2	2	1	1	0	0	1	16	2
21	COSBY-ROUNDTREE, DHAMIF	F	0	0-0	0-0	0-0	0	0	0	1	0	0	0	0	0	-1
TEAM							1	3	4	0		1				
<b>TOTALS</b>			<b>23</b>	<b>9-31</b>	<b>5-21</b>	<b>0-0</b>	<b>5</b>	<b>15</b>	<b>20</b>	<b>7</b>	<b>5</b>	<b>6</b>	<b>0</b>	<b>3</b>	<b>100</b>	

*Shooting By Period*

Period	FG	FG%	3FG	3FG%	FT	FT%
1st Half	9-31	29%	5-21	24%	0-0	0%
Game	22-63	34.9%	10-41	24.4%	2-2	100.0%

*Deadball Rebounds: 0,0*  
*Last FG Half: VIL 2nd-00:20*

**Game Notes:**

Officials: Mike Stephens, Ray Natili, Brent Hampton  
 Attendance: 20706

Start Time: 12:01 PM ET  
 End Time: 02:07 PM ET  
 Game Duration: 2:05

Score	1st	2nd	TOT
KAN	23	32	55
VIL	23	33	56

Points from (This Period)	KAN	VIL
In the Paint	16	6
Off Turns	4	6
2nd Chance	3	5
Fast Break	6	0
Bench	3	8

**Official Play-By-Play  
Kansas vs Villanova**

**First Half  
December 21, 2019 at Wells Fargo Center (sellout) - Philadelphia**



**Period 1**

**Starters:**

**Kansas:** 00 GARRETT, MARCUS (G); 1 DOTSON, DEVON (G); 30 AGBAJI, OCHAI (G); 33 MCCORMACK, DAVID (F); 35 AZUBUIKE, UDOKA (C);

**Villanova:** 2 GILLESPIE, COLLIN (G); 10 SWIDER, COLE (F); 23 SAMUELS, JERMAINE (F); 24 ROBINSON-EARL, JEREMIAH (F); 41 BEY, SADDIQ (F);

Time	VISITORS: Kansas	Score	Margin	HOME: Villanova
19:35				MISSED LAYUP by GILLESPIE, COLLIN
19:28				REBOUND (OFF) by ROBINSON-EARL, JEREMIAH
19:28		2-0	H 2	GOOD! LAYUP by ROBINSON-EARL, JEREMIAH
19:06				FOUL (PERSONAL) by SAMUELS, JERMAINE
18:54	MISSED JUMPER by AZUBUIKE, UDOKA			
18:49				REBOUND (DEF) by ROBINSON-EARL, JEREMIAH
18:26				MISSED JUMPER by SWIDER, COLE
18:21	REBOUND (DEF) by AZUBUIKE, UDOKA			
18:10	GOOD! LAYUP by MCCORMACK, DAVID	2-2	T	
17:49				MISSED 3PTR by ROBINSON-EARL, JEREMIAH
17:44	REBOUND (DEF) by MCCORMACK, DAVID			
17:26	MISSED 3PTR by GARRETT, MARCUS			
17:19	REBOUND (OFF) by MCCORMACK, DAVID			
17:19	GOOD! LAYUP by MCCORMACK, DAVID	2-4	V 2	
17:03				MISSED 3PTR by GILLESPIE, COLLIN
16:59	REBOUND (DEF) by AZUBUIKE, UDOKA			
16:48	MISSED 3PTR by AGBAJI, OCHAI			
16:43				REBOUND (DEF) by SAMUELS, JERMAINE
16:29				MISSED 3PTR by GILLESPIE, COLLIN
16:24	REBOUND (DEF) by MCCORMACK, DAVID			
16:21				FOUL (PERSONAL) by GILLESPIE, COLLIN
16:21				SUB OUT: SWIDER, COLE
16:21				SUB IN: MOORE, JUSTIN
16:12	MISSED LAYUP by DOTSON, DEVON			
16:08				REBOUND (DEF) by BEY, SADDIQ
15:53				MISSED JUMPER by ROBINSON-EARL, JEREMIAH
15:49	REBOUND (DEF) by AZUBUIKE, UDOKA			
15:46	TURNOVER (OTHER) by AGBAJI, OCHAI			
15:46				
15:30				TURNOVER (BADPASS) by ROBINSON-EARL, JEREMIAH
15:30	STEAL by AGBAJI, OCHAI			
15:13	MISSED DUNK by AZUBUIKE, UDOKA			
15:08				REBOUND (DEF) by MOORE, JUSTIN
15:03	FOUL (PERSONAL) by MCCORMACK, DAVID			
15:03				SUB OUT: ROBINSON-EARL, JEREMIAH
15:03				SUB IN: SWIDER, COLE
15:03	SUB OUT: MCCORMACK, DAVID			
15:03	SUB IN: MOSS, ISIAH			
14:48		5-4	H 1	GOOD! 3PTR by GILLESPIE, COLLIN
14:48				ASSIST by BEY, SADDIQ
14:29	GOOD! LAYUP by AZUBUIKE, UDOKA [PNT]	5-6	V 1	
14:29	ASSIST by AGBAJI, OCHAI			
14:29				FOUL (PERSONAL) by MOORE, JUSTIN
14:29				SUB OUT: SAMUELS, JERMAINE
14:29				SUB IN: COSBY-ROUNDTREE, DHAMIR
14:29	MISSED FT by AZUBUIKE, UDOKA			
14:28	REBOUND (OFF) by GARRETT, MARCUS			
14:21				FOUL (PERSONAL) by COSBY-ROUNDTREE, DHAMIR
14:21	GOOD! FT by DOTSON, DEVON [FB]	5-7	V 2	
14:21				SUB OUT: COSBY-ROUNDTREE, DHAMIR
14:21				SUB IN: ROBINSON-EARL, JEREMIAH
14:21	MISSED FT by DOTSON, DEVON			
14:20				REBOUND (DEF) by BEY, SADDIQ
14:05				MISSED 3PTR by GILLESPIE, COLLIN
14:01	REBOUND (DEF) by DOTSON, DEVON			
13:57	MISSED LAYUP by DOTSON, DEVON			
13:55	REBOUND (OFF) by AZUBUIKE, UDOKA			
13:55	TURNOVER (TRAVEL) by AZUBUIKE, UDOKA			
13:43				MISSED 3PTR by BEY, SADDIQ
13:39	REBOUND (DEF) by DOTSON, DEVON			
13:33	GOOD! LAYUP by AZUBUIKE, UDOKA	5-9	V 4	
13:33	ASSIST by AGBAJI, OCHAI			
13:10				TURNOVER (BADPASS) by ROBINSON-EARL, JEREMIAH
13:10	STEAL by AGBAJI, OCHAI			
13:04	GOOD! LAYUP by DOTSON, DEVON [FB]	5-11	V 6	
13:04	ASSIST by AGBAJI, OCHAI			
12:46				TURNOVER (BADPASS) by ROBINSON-EARL, JEREMIAH
12:46	STEAL by AGBAJI, OCHAI			
12:46				SUB OUT: BEY, SADDIQ
12:46				SUB IN: SAMUELS, JERMAINE

Time	VISITORS: Kansas	Score	Margin	HOME: Villanova
12:46	SUB OUT: AZUBUIKE, UDOKA			
12:46	SUB IN: DESOUSA, SILVIO			
12:46				FOUL (PERSONAL) by BEY, SADDIQ
12:17	MISSED 3PTR by MOSS, ISIAIAH			
12:13				REBOUND (DEF) by ROBINSON-EARL, JEREMIAH
12:11	FOUL (PERSONAL) by DOTSON, DEVON			
12:06	SUB OUT: DOTSON, DEVON			
12:06	SUB IN: ENARUNA, TRISTAN			
11:56		7-11	V 4	GOOD! JUMPER by MOORE , JUSTIN
11:37	MISSED JUMPER by GARRETT, MARCUS			
11:35	REBOUND (OFF) by TEAM			
11:35				
11:35				SUB OUT: GILLESPIE, COLLIN
11:35				SUB IN: BEY, SADDIQ
11:23	FOUL (OFF) by DESOUSA, SILVIO			
11:23	TURNOVER (OFFENSIVE) by DESOUSA, SILVIO			
11:00				MISSED LAYUP by MOORE , JUSTIN
11:00	BLOCK by DESOUSA, SILVIO			
10:55	REBOUND (DEF) by GARRETT, MARCUS			
10:53	GOOD! 3PTR by AGBAJI, OCHAI [FB]	7-14	V 7	
10:53	ASSIST by GARRETT, MARCUS			
10:27		9-14	V 5	GOOD! DUNK by BEY, SADDIQ
10:07	MISSED 3PTR by AGBAJI, OCHAI			
10:03				REBOUND (DEF) by BEY, SADDIQ
09:42				MISSED 3PTR by MOORE , JUSTIN
09:38	REBOUND (DEF) by AGBAJI, OCHAI			
09:27				SUB OUT: SWIDER, COLE
09:27				SUB OUT: ROBINSON-EARL, JEREMIAH
09:27				SUB IN: GILLESPIE, COLLIN
09:27				SUB IN: SLATER, BRANDON
09:27	SUB OUT: GARRETT, MARCUS			
09:27	SUB OUT: ENARUNA, TRISTAN			
09:27	SUB OUT: DESOUSA, SILVIO			
09:27	SUB IN: DOTSON, DEVON			
09:27	SUB IN: MCCORMACK, DAVID			
09:27	SUB IN: AZUBUIKE, UDOKA			
09:26	MISSED JUMPER by MOSS, ISIAIAH			
09:22				REBOUND (DEF) by GILLESPIE, COLLIN
09:04				MISSED 3PTR by MOORE , JUSTIN
09:01	REBOUND (DEF) by DOTSON, DEVON			
08:50	MISSED 3PTR by MOSS, ISIAIAH			
08:49				REBOUND (DEF) by TEAM
08:49				SUB OUT: SAMUELS, JERMAINE
08:49				SUB IN: SWIDER, COLE
08:49	SUB OUT: MOSS, ISIAIAH			
08:49	SUB IN: BRAUN, CHRISTIAN			
08:32		12-14	V 2	GOOD! 3PTR by SWIDER, COLE
08:32				ASSIST by MOORE , JUSTIN
08:11	TURNOVER (BADPASS) by MCCORMACK, DAVID			
08:11				STEAL by GILLESPIE, COLLIN
08:07	FOUL (PERSONAL) by BRAUN, CHRISTIAN			
08:07				SUB OUT: GILLESPIE, COLLIN
08:07				SUB OUT: SWIDER, COLE
08:07				SUB IN: SAMUELS, JERMAINE
08:07				SUB IN: ROBINSON-EARL, JEREMIAH
08:03				MISSED 3PTR by SAMUELS, JERMAINE
08:00				REBOUND (OFF) by BEY, SADDIQ
07:53		15-14	H 1	GOOD! 3PTR by MOORE , JUSTIN
07:53				ASSIST by BEY, SADDIQ
07:51	TIMEOUT 30SEC			
07:51	SUB OUT: BRAUN, CHRISTIAN			
07:51	SUB IN: GARRETT, MARCUS			
07:33	MISSED JUMPER by AZUBUIKE, UDOKA			
07:29				REBOUND (DEF) by BEY, SADDIQ
07:23				TURNOVER (BADPASS) by SAMUELS, JERMAINE
07:23	STEAL by GARRETT, MARCUS			
07:12	MISSED LAYUP by MCCORMACK, DAVID			
07:09				REBOUND (DEF) by MOORE , JUSTIN
06:47				MISSED 3PTR by BEY, SADDIQ
06:43	REBOUND (DEF) by AZUBUIKE, UDOKA			
06:32	GOOD! JUMPER by GARRETT, MARCUS [PNT]	15-16	V 1	
06:07				MISSED 3PTR by BEY, SADDIQ
06:03				REBOUND (OFF) by TEAM
06:03				SUB OUT: MOORE , JUSTIN
06:03				SUB OUT: SAMUELS, JERMAINE
06:03				SUB IN: GILLESPIE, COLLIN
06:03				SUB IN: SWIDER, COLE
06:03	SUB OUT: AGBAJI, OCHAI			
06:03	SUB IN: MOSS, ISIAIAH			
06:03	FOUL (PERSONAL) by AZUBUIKE, UDOKA			

Time	VISITORS: Kansas	Score	Margin	HOME: Villanova
05:47				MISSED 3PTR by GILLESPIE, COLLIN
05:41				REBOUND (OFF) by ROBINSON-EARL, JEREMIAH
05:35				TURNOVER (BADPASS) by GILLESPIE, COLLIN
05:16	MISSED LAYUP by GARRETT, MARCUS			
05:15				REBOUND (DEF) by TEAM
05:14				SUB OUT: SLATER, BRANDON
05:14				SUB IN: MOORE , JUSTIN
05:14	SUB OUT: GARRETT, MARCUS			
05:14	SUB IN: AGBAJI, OCHAI			
05:00				MISSED 3PTR by MOORE , JUSTIN
04:55	REBOUND (DEF) by DOTSON, DEVON			
04:52	MISSED 3PTR by AGBAJI, OCHAI			
04:48	REBOUND (OFF) by AZUBUIKE, UDOKA			
04:36	MISSED JUMPER by MCCORMACK, DAVID			
04:32				REBOUND (DEF) by SWIDER, COLE
04:18				MISSED 3PTR by SWIDER, COLE
04:17	REBOUND (DEF) by TEAM			
04:17				FOUL (PERSONAL) by BEY, SADDIQ
04:17				SUB OUT: BEY, SADDIQ
04:17				SUB IN: SAMUELS, JERMAINE
04:04	TURNOVER (3SEC) by AZUBUIKE, UDOKA			
03:51		18-16	H 2	GOOD! 3PTR by SAMUELS, JERMAINE
03:51				ASSIST by ROBINSON-EARL, JEREMIAH
03:32	GOOD! LAYUP by DOTSON, DEVON	18-18	T	
03:11				MISSED 3PTR by SAMUELS, JERMAINE
03:10	REBOUND (DEF) by AZUBUIKE, UDOKA			
03:01	TURNOVER (BADPASS) by MOSS, ISAIAH			
03:01				STEAL by MOORE , JUSTIN
02:53				SUB OUT: ROBINSON-EARL, JEREMIAH
02:53				SUB IN: SLATER, BRANDON
02:53	SUB OUT: MOSS, ISAIAH			
02:53	SUB IN: ENARUNA, TRISTAN			
02:53				
02:51		21-18	H 3	GOOD! 3PTR by MOORE , JUSTIN
02:51				ASSIST by SLATER, BRANDON
02:23	GOOD! 3PTR by ENARUNA, TRISTAN	21-21	T	
02:23	ASSIST by AZUBUIKE, UDOKA			
01:56		23-21	H 2	GOOD! JUMPER by SWIDER, COLE
01:48	TURNOVER (LOSTBALL) by DOTSON, DEVON			
01:48				STEAL by SLATER, BRANDON
01:38				MISSED 3PTR by MOORE , JUSTIN
01:36	REBOUND (DEF) by TEAM			
01:36				FOUL (PERSONAL) by SWIDER, COLE
01:36				SUB OUT: SAMUELS, JERMAINE
01:36				SUB IN: ROBINSON-EARL, JEREMIAH
01:36	MISSED FT by AZUBUIKE, UDOKA			
01:36				REBOUND (DEF) by ROBINSON-EARL, JEREMIAH
01:10				MISSED 3PTR by SLATER, BRANDON
01:05				REBOUND (OFF) by ROBINSON-EARL, JEREMIAH
01:05				TURNOVER (SHOTCLOCK) by TEAM
01:05				SUB OUT: GILLESPIE, COLLIN
01:05				SUB IN: SAMUELS, JERMAINE
00:50	GOOD! JUMPER by AZUBUIKE, UDOKA [PNT]	23-23	T	
00:50	ASSIST by AGBAJI, OCHAI			
00:47				TIMEOUT 30SEC
00:47				SUB OUT: SLATER, BRANDON
00:47				SUB IN: GILLESPIE, COLLIN
00:36				MISSED JUMPER by GILLESPIE, COLLIN
00:36	BLOCK by AZUBUIKE, UDOKA			
00:31	REBOUND (DEF) by DOTSON, DEVON			
00:30	MISSED JUMPER by DOTSON, DEVON			
00:29				REBOUND (DEF) by TEAM
00:29	FOUL (PERSONAL) by AZUBUIKE, UDOKA			
00:29	SUB OUT: AZUBUIKE, UDOKA			
00:29	SUB IN: MOSS, ISAIAH			
00:02				MISSED LAYUP by MOORE , JUSTIN
00:01	REBOUND (DEF) by MCCORMACK, DAVID			

### Kansas 23, Villanova 23

Points from (This Period)	KAN	VIL
In the Paint	16	6
Off Turns	4	6
2nd Chance	3	5
Fast Break	6	0
Bench	3	8

**Official Box Score**  
**Kansas vs Villanova**  
**Second Half Statistics Only**  
**December 21, 2019 at Wells Fargo Center (sellout) - Philadelphia**



**Kansas 32**

No.	Player	S	Pts	FG	3FG	FT	OR	DR	TR	PF	A	TO	Blk	Stl	Min	+/-
00	GARRETT, MARCUS	G	0	0-0	0-0	0-0	0	0	0	0	0	0	0	0	0	0
01	DOTSON, DEVON	G	10	3-10	1-2	3-5	0	2	2	0	4	2	0	1	20	-1
30	AGBAJI, OCHAI	G	8	4-4	0-0	0-0	0	1	1	2	0	1	0	0	20	-1
33	MCCORMACK, DAVID	F	2	1-3	0-0	0-0	1	2	3	0	1	1	0	1	11	-7
35	AZUBUIKE, UDOKA	C	6	3-4	0-0	0-0	0	4	4	1	1	0	1	0	14	0
02	BRAUN, CHRISTIAN	G	6	3-5	0-2	0-1	0	2	2	1	0	0	1	0	15	5
04	MOSS, ISAAH	G	0	0-2	0-1	0-0	0	0	0	1	0	1	0	0	5	-6
13	ENARUNA, TRISTAN	F	0	0-0	0-0	0-0	2	1	3	1	2	0	1	0	15	5
22	DESOUSA, SILVIO	F	0	0-0	0-0	0-0	0	0	0	0	0	0	0	0	0	0
TEAM							2	2	4	0	0					
<b>TOTALS</b>			<b>32</b>	<b>14-28</b>	<b>1-5</b>	<b>3-6</b>	<b>5</b>	<b>14</b>	<b>19</b>	<b>6</b>	<b>8</b>	<b>5</b>	<b>3</b>	<b>2</b>	<b>100</b>	

*Shooting By Period*

Period	FG	FG%	3FG	3FG%	FT	FT%
2nd Half	14-28	50%	1-5	20%	3-6	50%
Game	24-55	43.6%	3-13	23.1%	4-10	40.0%

*Deadball Rebounds: 1,0*  
*Last FG Half: KAN -*

**Villanova 33**

No.	Player	S	Pts	FG	3FG	FT	OR	DR	TR	PF	A	TO	Blk	Stl	Min	+/-
02	GILLESPIE, COLLIN	G	9	4-8	1-5	0-0	0	2	2	2	2	0	0	1	20	1
10	SWIDER, COLE	F	0	0-0	0-0	0-0	0	0	0	0	0	0	0	0	9	-4
23	SAMUELS, JERMAINE	F	12	5-9	2-5	0-0	2	2	4	2	1	0	0	1	19	5
24	ROBINSON-EARL, JEREMIAH	F	7	2-8	1-5	2-2	0	3	3	0	1	0	0	1	15	-2
41	BEY, SADDIQ	F	5	2-4	1-2	0-0	1	1	2	2	3	1	0	0	18	3
03	SLATER, BRANDON	F	0	0-0	0-0	0-0	1	0	1	1	0	0	0	0	1	1
05	MOORE, JUSTIN	G	0	0-3	0-3	0-0	0	1	1	0	2	2	0	0	17	1
21	COSBY-ROUNDTREE, DHAMIF	F	0	0-0	0-0	0-0	0	0	0	0	0	0	0	0	0	0
TEAM							1	2	3	0	0					
<b>TOTALS</b>			<b>33</b>	<b>13-32</b>	<b>5-20</b>	<b>2-2</b>	<b>5</b>	<b>11</b>	<b>16</b>	<b>7</b>	<b>9</b>	<b>3</b>	<b>0</b>	<b>3</b>	<b>100</b>	

*Shooting By Period*

Period	FG	FG%	3FG	3FG%	FT	FT%
2nd Half	13-32	41%	5-20	25%	2-2	100%
Game	22-63	34.9%	10-41	24.4%	2-2	100.0%

*Deadball Rebounds: 0,0*  
*Last FG Half: VIL -*

Game Notes:

Officials: Mike Stephens, Ray Natili, Brent Hampton  
 Attendance: 20706

Start Time: 12:01 PM ET  
 End Time: 02:07 PM ET  
 Game Duration: 2:05

Score	1st	2nd	TOT
KAN	23	32	55
VIL	23	33	56

Points from (This Period)	KAN	VIL
In the Paint	22	14
Off Turns	2	4
2nd Chance	2	5
Fast Break	2	5
Bench	6	0

**Official Play-By-Play  
Kansas vs Villanova**

**December 21, 2019 at Wells Fargo Center (sellout) - Philadelphia**



**Period 2**

**Starters:**

**Kansas:** 00 GARRETT, MARCUS (G); 1 DOTSON, DEVON (G); 30 AGBAJI, OCHAI (G); 33 MCCORMACK, DAVID (F); 35 AZUBUIKE, UDOKA (C);

**Villanova:** 2 GILLESPIE, COLLIN (G); 10 SWIDER, COLE (F); 23 SAMUELS, JERMAINE (F); 24 ROBINSON-EARL, JEREMIAH (F); 41 BEY, SADDIQ (F);

Time	VISITORS: Kansas	Score	Margin	HOME: Villanova
20:00				SUB OUT: MOORE , JUSTIN
20:00				SUB IN: BEY, SADDIQ
20:00	SUB OUT: ENARUNA, TRISTAN			
20:00	SUB IN: AZUBUIKE, UDOKA			
19:47	TURNOVER (LOSTBALL) by MCCORMACK, DAVID			
19:31				MISSED 3PTR by SAMUELS, JERMAINE
19:26	REBOUND (DEF) by MCCORMACK, DAVID			
19:14	TURNOVER (BADPASS) by DOTSON, DEVON			
19:14				STEAL by ROBINSON-EARL, JEREMIAH
19:03				MISSED 3PTR by ROBINSON-EARL, JEREMIAH
18:59	REBOUND (DEF) by DOTSON, DEVON			
18:52	GOOD! JUMPER by AZUBUIKE, UDOKA [PNT]	23-25	V 2	
18:52	ASSIST by MCCORMACK, DAVID			
18:28				MISSED 3PTR by GILLESPIE, COLLIN
18:25				REBOUND (OFF) by SAMUELS, JERMAINE
18:19		25-25	T	GOOD! JUMPER by SAMUELS, JERMAINE
18:19				ASSIST by BEY, SADDIQ
17:55	GOOD! JUMPER by AZUBUIKE, UDOKA	25-27	V 2	
17:30		27-27	T	GOOD! LAYUP by ROBINSON-EARL, JEREMIAH
17:30				ASSIST by BEY, SADDIQ
17:15	MISSED 3PTR by DOTSON, DEVON			
17:12	REBOUND (OFF) by TEAM			
17:12				SUB OUT: SWIDER, COLE
17:12				SUB IN: MOORE , JUSTIN
17:01	MISSED JUMPER by MOSS, ISAIAH			
16:57				REBOUND (DEF) by MOORE , JUSTIN
16:55		30-27	H 3	GOOD! 3PTR by BEY, SADDIQ [FB]
16:55				ASSIST by MOORE , JUSTIN
16:28				FOUL (PERSONAL) by SAMUELS, JERMAINE
16:28				SUB OUT: GILLESPIE, COLLIN
16:28				SUB IN: SLATER, BRANDON
16:18	MISSED LAYUP by AZUBUIKE, UDOKA			
16:17				REBOUND (DEF) by TEAM
16:17				SUB OUT: SLATER, BRANDON
16:17				SUB IN: GILLESPIE, COLLIN
15:53		33-27	H 6	GOOD! 3PTR by ROBINSON-EARL, JEREMIAH
15:53				ASSIST by MOORE , JUSTIN
15:29	TURNOVER (BADPASS) by MOSS, ISAIAH			
15:29				STEAL by SAMUELS, JERMAINE
15:22				MISSED 3PTR by SAMUELS, JERMAINE
15:17	REBOUND (DEF) by MCCORMACK, DAVID			
15:11	MISSED 3PTR by MOSS, ISAIAH			
15:07	REBOUND (OFF) by MCCORMACK, DAVID			
15:02	MISSED JUMPER by DOTSON, DEVON			
14:56				REBOUND (DEF) by GILLESPIE, COLLIN
14:52	FOUL (PERSONAL) by MOSS, ISAIAH			
14:52				SUB OUT: BEY, SADDIQ
14:52				SUB IN: SWIDER, COLE
14:52	SUB OUT: MOSS, ISAIAH			
14:52	SUB OUT: MCCORMACK, DAVID			
14:52	SUB IN: BRAUN, CHRISTIAN			
14:52	SUB IN: ENARUNA, TRISTAN			
14:52		34-27	H 7	GOOD! FT by ROBINSON-EARL, JEREMIAH
14:52		35-27	H 8	GOOD! FT by ROBINSON-EARL, JEREMIAH
14:29	GOOD! LAYUP by BRAUN, CHRISTIAN [PNT]	35-29	H 6	
14:29	ASSIST by ENARUNA, TRISTAN			
14:11				MISSED 3PTR by ROBINSON-EARL, JEREMIAH
14:07	REBOUND (DEF) by AZUBUIKE, UDOKA			
13:56	GOOD! LAYUP by AGBAJI, OCHAI [PNT]	35-31	H 4	
13:56	ASSIST by AZUBUIKE, UDOKA			
13:32				MISSED 3PTR by GILLESPIE, COLLIN
13:28	REBOUND (DEF) by AZUBUIKE, UDOKA			
13:21	FOUL (OFF) by AGBAJI, OCHAI			
13:21	TURNOVER (OFFENSIVE) by AGBAJI, OCHAI			
13:21				SUB OUT: SWIDER, COLE
13:21				SUB OUT: ROBINSON-EARL, JEREMIAH
13:21				SUB IN: SLATER, BRANDON
13:21				SUB IN: BEY, SADDIQ
13:02		37-31	H 6	GOOD! LAYUP by BEY, SADDIQ



Time	VISITORS: Kansas	Score	Margin	HOME: Villanova
12:51	MISSED 3PTR by BRAUN, CHRISTIAN			
12:46				REBOUND (DEF) by GILLESPIE, COLLIN
12:36				MISSED 3PTR by BEY, SADDIQ
12:32				REBOUND (OFF) by SLATER, BRANDON
12:31	SUB OUT: AZUBUIKE, UDOKA			
12:31	SUB IN: MCCORMACK, DAVID			
12:31				SUB OUT: SLATER, BRANDON
12:31				SUB OUT: SAMUELS, JERMAINE
12:31				SUB IN: SWIDER, COLE
12:31				SUB IN: ROBINSON-EARL, JEREMIAH
12:17				TURNOVER (BADPASS) by MOORE, JUSTIN
12:17	STEAL by MCCORMACK, DAVID			
12:11				FOUL (PERSONAL) by GILLESPIE, COLLIN
12:11	GOOD! FT by DOTSON, DEVON [FB]	37-32	H 5	
12:11	GOOD! FT by DOTSON, DEVON [FB]	37-33	H 4	
11:58				MISSED 3PTR by MOORE, JUSTIN
11:54	REBOUND (DEF) by BRAUN, CHRISTIAN			
11:48	GOOD! DUNK by AGBAJI, OCHAI	37-35	H 2	
11:48	ASSIST by DOTSON, DEVON			
11:25				MISSED JUMPER by ROBINSON-EARL, JEREMIAH
11:24	REBOUND (DEF) by TEAM			
11:24				FOUL (PERSONAL) by BEY, SADDIQ
11:24				
11:24				SUB OUT: SWIDER, COLE
11:24				SUB IN: SAMUELS, JERMAINE
11:07	MISSED LAYUP by DOTSON, DEVON			
11:00	REBOUND (OFF) by ENARUNA, TRISTAN			
10:56	MISSED JUMPER by MCCORMACK, DAVID			
10:52	REBOUND (OFF) by ENARUNA, TRISTAN			
10:45	GOOD! LAYUP by BRAUN, CHRISTIAN [PNT]	37-37	T	
10:45	ASSIST by DOTSON, DEVON			
10:24		39-37	H 2	GOOD! LAYUP by SAMUELS, JERMAINE
10:24				ASSIST by GILLESPIE, COLLIN
10:06	GOOD! LAYUP by DOTSON, DEVON	39-39	T	
09:40		41-39	H 2	GOOD! LAYUP by GILLESPIE, COLLIN
09:26	GOOD! JUMPER by MCCORMACK, DAVID	41-41	T	
09:03		43-41	H 2	GOOD! JUMPER by GILLESPIE, COLLIN
09:03				ASSIST by ROBINSON-EARL, JEREMIAH
08:57				FOUL (PERSONAL) by SAMUELS, JERMAINE
08:57				SUB OUT: ROBINSON-EARL, JEREMIAH
08:57				SUB IN: SWIDER, COLE
08:42	GOOD! 3PTR by DOTSON, DEVON	43-44	V 1	
08:06		46-44	H 2	GOOD! 3PTR by SAMUELS, JERMAINE
08:06				ASSIST by BEY, SADDIQ
07:53	MISSED 3PTR by BRAUN, CHRISTIAN			
07:49				REBOUND (DEF) by BEY, SADDIQ
07:42		48-44	H 4	GOOD! LAYUP by SAMUELS, JERMAINE
07:40	TIMEOUT 30SEC			
07:40				SUB OUT: SWIDER, COLE
07:40				SUB IN: SLATER, BRANDON
07:40	SUB OUT: MCCORMACK, DAVID			
07:40	SUB IN: AZUBUIKE, UDOKA			
07:17				FOUL (PERSONAL) by SLATER, BRANDON
07:17				
07:17	MISSED FT by DOTSON, DEVON			
07:17	REBOUND (OFF) by TEAM			
07:17	GOOD! FT by DOTSON, DEVON	48-45	H 3	
07:17				SUB OUT: SLATER, BRANDON
07:17				SUB IN: SWIDER, COLE
07:13				MISSED 3PTR by GILLESPIE, COLLIN
07:12	REBOUND (DEF) by BRAUN, CHRISTIAN			
06:43	GOOD! DUNK by AZUBUIKE, UDOKA	48-47	H 1	
06:09				MISSED 3PTR by SAMUELS, JERMAINE
06:06	REBOUND (DEF) by AZUBUIKE, UDOKA			
05:54	MISSED JUMPER by DOTSON, DEVON			
05:49				REBOUND (DEF) by SAMUELS, JERMAINE
05:48				TURNOVER (LOSTBALL) by MOORE, JUSTIN
05:48	STEAL by DOTSON, DEVON			
05:48				SUB OUT: SWIDER, COLE
05:48				SUB IN: ROBINSON-EARL, JEREMIAH
05:35	MISSED LAYUP by DOTSON, DEVON			
05:31				REBOUND (DEF) by ROBINSON-EARL, JEREMIAH
05:21				MISSED 3PTR by MOORE, JUSTIN
05:16	REBOUND (DEF) by ENARUNA, TRISTAN			
04:53	GOOD! LAYUP by AGBAJI, OCHAI	48-49	V 1	
04:53	ASSIST by ENARUNA, TRISTAN			
04:26				MISSED 3PTR by ROBINSON-EARL, JEREMIAH
04:21				REBOUND (OFF) by BEY, SADDIQ
04:20				MISSED LAYUP by BEY, SADDIQ
04:17				REBOUND (OFF) by SAMUELS, JERMAINE

Time	VISITORS: Kansas	Score	Margin	HOME: Villanova
04:15		51-49	H 2	GOOD! 3PTR by GILLESPIE, COLLIN
04:15				ASSIST by SAMUELS, JERMAINE
04:00	GOOD! JUMPER by DOTSON, DEVON	51-51	T	
03:38				MISSED 3PTR by GILLESPIE, COLLIN
03:34	REBOUND (DEF) by DOTSON, DEVON			
03:11	MISSED JUMPER by DOTSON, DEVON			
03:08				REBOUND (DEF) by TEAM
03:09	FOUL (PERSONAL) by AZUBUIKE, UDOKA			
03:09				
02:47				MISSED 3PTR by ROBINSON-EARL, JEREMIAH
02:43				REBOUND (OFF) by TEAM
02:37				MISSED LAYUP by ROBINSON-EARL, JEREMIAH
02:37	BLOCK by AZUBUIKE, UDOKA			
02:37	REBOUND (DEF) by TEAM			
02:27	GOOD! LAYUP by AGBAJI, OCHAI	51-53	V 2	
02:27	ASSIST by DOTSON, DEVON			
02:09				MISSED DUNK by SAMUELS, JERMAINE
02:09	BLOCK by BRAUN, CHRISTIAN			
02:04	REBOUND (DEF) by AZUBUIKE, UDOKA			
01:49	GOOD! LAYUP by BRAUN, CHRISTIAN	51-55	V 4	
01:49	ASSIST by DOTSON, DEVON			
01:49				FOUL (PERSONAL) by BEY, SADDIQ
01:49				TIMEOUT 30SEC
01:49				SUB OUT: ROBINSON-EARL, JEREMIAH
01:49				SUB IN: SWIDER, COLE
01:49	MISSED FT by BRAUN, CHRISTIAN			
01:49				REBOUND (DEF) by SAMUELS, JERMAINE
01:32				MISSED 3PTR by MOORE, JUSTIN
01:32	BLOCK by ENARUNA, TRISTAN			
01:27	REBOUND (DEF) by AGBAJI, OCHAI			
01:11	TURNOVER (LOSTBALL) by DOTSON, DEVON			
01:11				STEAL by GILLESPIE, COLLIN
01:07		53-55	V 2	GOOD! LAYUP by GILLESPIE, COLLIN [FB]
01:07				TIMEOUT 30SEC
01:07				SUB OUT: SWIDER, COLE
01:07				SUB IN: ROBINSON-EARL, JEREMIAH
01:07	SUB OUT: AZUBUIKE, UDOKA			
01:07	SUB IN: MCCORMACK, DAVID			
00:41	MISSED JUMPER by MCCORMACK, DAVID			
00:37				REBOUND (DEF) by ROBINSON-EARL, JEREMIAH
00:20		56-55	H 1	GOOD! 3PTR by SAMUELS, JERMAINE
00:20				ASSIST by GILLESPIE, COLLIN
00:17				FOUL (PERSONAL) by GILLESPIE, COLLIN
00:17	SUB OUT: MCCORMACK, DAVID			
00:17	SUB IN: AZUBUIKE, UDOKA			
00:17	MISSED FT by DOTSON, DEVON			
00:17				REBOUND (DEF) by ROBINSON-EARL, JEREMIAH
00:13	FOUL (PERSONAL) by AGBAJI, OCHAI			
00:13	TIMEOUT 30SEC			
00:13				SUB OUT: ROBINSON-EARL, JEREMIAH
00:13				SUB IN: SWIDER, COLE
00:13	SUB OUT: AZUBUIKE, UDOKA			
00:13	SUB IN: MOSS, ISIAH			
00:13				TIMEOUT 30SEC
00:13	FOUL (PERSONAL) by BRAUN, CHRISTIAN			
00:12	FOUL (PERSONAL) by ENARUNA, TRISTAN			
00:11				TURNOVER (BADPASS) by BEY, SADDIQ
00:11	TIMEOUT TEAM			
00:11				SUB OUT: SWIDER, COLE
00:11				SUB IN: ROBINSON-EARL, JEREMIAH
00:04	SUB OUT: ENARUNA, TRISTAN			
00:04	SUB IN: AZUBUIKE, UDOKA			
00:03	MISSED JUMPER by DOTSON, DEVON			
00:00	REBOUND (OFF) by TEAM			

### Kansas 55, Villanova 56

Points from (This Period)	KAN	VIL
In the Paint	22	14
Off Turns	2	4
2nd Chance	2	5
Fast Break	2	5
Bench	6	0

**Official Scoring/Possession Reference Chart**  
**Kansas vs Villanova**  
**Period 1**  
**December 21, 2019 at Wells Fargo Center (sellout) - Philadelphia**



**Period 1**

**Starters:**

**Kansas:** 00 GARRETT, MARCUS (G); 1 DOTSON, DEVON (G); 30 AGBAJI, OCHAI (G); 33 MCCORMACK, DAVID (F); 35 AZUBUIKE, UDOKA (C);

**Villanova:** 2 GILLESPIE, COLLIN (G); 10 SWIDER, COLE (F); 23 SAMUELS, JERMAINE (F); 24 ROBINSON-EARL, JEREMIAH (F); 41 BEY, SADDIQ (F);

Time	VISITORS: Kansas	Score	Margin	HOME: Villanova
19:28		2-0	H 2	GOOD! LAYUP by ROBINSON-EARL, JEREMIAH
18:10	GOOD! LAYUP by MCCORMACK, DAVID	2-2	T	
17:19	GOOD! LAYUP by MCCORMACK, DAVID	2-4	V 2	
14:48		5-4	H 1	GOOD! 3PTR by GILLESPIE, COLLIN
14:29	GOOD! LAYUP by AZUBUIKE, UDOKA [PNT]	5-6	V 1	
14:21	GOOD! FT by DOTSON, DEVON [FB]	5-7	V 2	
13:33	GOOD! LAYUP by AZUBUIKE, UDOKA	5-9	V 4	
13:04	GOOD! LAYUP by DOTSON, DEVON [FB]	5-11	V 6	
11:56		7-11	V 4	GOOD! JUMPER by MOORE, JUSTIN
10:53	GOOD! 3PTR by AGBAJI, OCHAI [FB]	7-14	V 7	
10:27		9-14	V 5	GOOD! DUNK by BEY, SADDIQ
08:32		12-14	V 2	GOOD! 3PTR by SWIDER, COLE
07:53		15-14	H 1	GOOD! 3PTR by MOORE, JUSTIN
06:32	GOOD! JUMPER by GARRETT, MARCUS [PNT]	15-16	V 1	
03:51		18-16	H 2	GOOD! 3PTR by SAMUELS, JERMAINE
03:32	GOOD! LAYUP by DOTSON, DEVON	18-18	T	
02:51		21-18	H 3	GOOD! 3PTR by MOORE, JUSTIN
02:23	GOOD! 3PTR by ENARUNA, TRISTAN	21-21	T	
01:56		23-21	H 2	GOOD! JUMPER by SWIDER, COLE
00:50	GOOD! JUMPER by AZUBUIKE, UDOKA [PNT]	23-23	T	

**Kansas 23, Villanova 23**

**Official Scoring/Possession Reference Chart**  
**Kansas vs Villanova**  
**Period 2**  
**December 21, 2019 at Wells Fargo Center (sellout) - Philadelphia**



**Period 2**

**Starters:**

**Kansas:** 00 GARRETT, MARCUS (G); 1 DOTSON, DEVON (G); 30 AGBAJI, OCHAI (G); 33 MCCORMACK, DAVID (F); 35 AZUBUIKE, UDOKA (C);

**Villanova:** 2 GILLESPIE, COLLIN (G); 10 SWIDER, COLE (F); 23 SAMUELS, JERMAINE (F); 24 ROBINSON-EARL, JEREMIAH (F); 41 BEY, SADDIQ (F);

Time	VISITORS: Kansas	Score	Margin	HOME: Villanova
18:52	GOOD! JUMPER by AZUBUIKE, UDOKA [PNT]	23-25	V 2	
18:19		25-25	T	GOOD! JUMPER by SAMUELS, JERMAINE
17:55	GOOD! JUMPER by AZUBUIKE, UDOKA	25-27	V 2	
17:30		27-27	T	GOOD! LAYUP by ROBINSON-EARL, JEREMIAH
16:55		30-27	H 3	GOOD! 3PTR by BEY, SADDIQ [FB]
15:53		33-27	H 6	GOOD! 3PTR by ROBINSON-EARL, JEREMIAH
14:52		34-27	H 7	GOOD! FT by ROBINSON-EARL, JEREMIAH
14:52		35-27	H 8	GOOD! FT by ROBINSON-EARL, JEREMIAH
14:29	GOOD! LAYUP by BRAUN, CHRISTIAN [PNT]	35-29	H 6	
13:56	GOOD! LAYUP by AGBAJI, OCHAI [PNT]	35-31	H 4	
13:02		37-31	H 6	GOOD! LAYUP by BEY, SADDIQ
12:11	GOOD! FT by DOTSON, DEVON [FB]	37-32	H 5	
12:11	GOOD! FT by DOTSON, DEVON [FB]	37-33	H 4	
11:48	GOOD! DUNK by AGBAJI, OCHAI	37-35	H 2	
10:45	GOOD! LAYUP by BRAUN, CHRISTIAN [PNT]	37-37	T	
10:24		39-37	H 2	GOOD! LAYUP by SAMUELS, JERMAINE
10:06	GOOD! LAYUP by DOTSON, DEVON	39-39	T	
09:40		41-39	H 2	GOOD! LAYUP by GILLESPIE, COLLIN
09:26	GOOD! JUMPER by MCCORMACK, DAVID	41-41	T	
09:03		43-41	H 2	GOOD! JUMPER by GILLESPIE, COLLIN
08:42	GOOD! 3PTR by DOTSON, DEVON	43-44	V 1	
08:06		46-44	H 2	GOOD! 3PTR by SAMUELS, JERMAINE
07:42		48-44	H 4	GOOD! LAYUP by SAMUELS, JERMAINE
07:17	GOOD! FT by DOTSON, DEVON	48-45	H 3	
06:43	GOOD! DUNK by AZUBUIKE, UDOKA	48-47	H 1	
04:53	GOOD! LAYUP by AGBAJI, OCHAI	48-49	V 1	
04:15		51-49	H 2	GOOD! 3PTR by GILLESPIE, COLLIN
04:00	GOOD! JUMPER by DOTSON, DEVON	51-51	T	
02:27	GOOD! LAYUP by AGBAJI, OCHAI	51-53	V 2	
01:49	GOOD! LAYUP by BRAUN, CHRISTIAN	51-55	V 4	
01:07		53-55	V 2	GOOD! LAYUP by GILLESPIE, COLLIN [FB]
00:20		56-55	H 1	GOOD! 3PTR by SAMUELS, JERMAINE

**Kansas 55, Villanova 56**

**Official Substitutions Log**  
**Kansas vs Villanova**  
**Period 1**  
**December 21, 2019 at Wells Fargo Center (sellout) - Philadelphia**



VISITORS: Kansas	Time	Score	HOME: Villanova
00 GARRETT, MARCUS			2 GILLESPIE, COLLIN
1 DOTSON, DEVON			10 SWIDER, COLE
30 AGBAJI, OCHAI			23 SAMUELS, JERMAINE
33 MCCORMACK, DAVID			24 ROBINSON-EARL, JEREMIAH
35 AZUBUIKE, UDOKA			41 BEY, SADDIQ
	16:21	4-2	SUB OUT: SWIDER, COLE
	16:21		SUB IN: MOORE, JUSTIN
	15:03	4-2	SUB OUT: ROBINSON-EARL, JEREMIAH
	15:03		SUB IN: SWIDER, COLE
SUB OUT: 33 MCCORMACK, DAVID	15:03		
SUB IN: 4 MOSS, ISAIAH	15:03		
	14:29	6-5	SUB OUT: SAMUELS, JERMAINE
	14:29		SUB IN: COSBY-ROUNDTREE, DHAMIR
	14:21	7-5	SUB OUT: COSBY-ROUNDTREE, DHAMIR
	14:21		SUB IN: ROBINSON-EARL, JEREMIAH
	12:46	11-5	SUB OUT: BEY, SADDIQ
	12:46		SUB IN: SAMUELS, JERMAINE
SUB OUT: 35 AZUBUIKE, UDOKA	12:46		
SUB IN: 22 DESOUSA, SILVIO	12:46		
SUB OUT: 1 DOTSON, DEVON	12:06	11-5	
SUB IN: 13 ENARUNA, TRISTAN	12:06		
	11:35	11-7	SUB OUT: GILLESPIE, COLLIN
	11:35		SUB IN: BEY, SADDIQ
	09:27	14-9	SUB OUT: SWIDER, COLE
	09:27		SUB OUT: ROBINSON-EARL, JEREMIAH
	09:27		SUB IN: GILLESPIE, COLLIN
	09:27		SUB IN: SLATER, BRANDON
SUB OUT: 00 GARRETT, MARCUS	09:27		
SUB OUT: 13 ENARUNA, TRISTAN	09:27		
SUB OUT: 22 DESOUSA, SILVIO	09:27		
SUB IN: 1 DOTSON, DEVON	09:27		
SUB IN: 33 MCCORMACK, DAVID	09:27		
SUB IN: 35 AZUBUIKE, UDOKA	09:27		
	08:49	14-9	SUB OUT: SAMUELS, JERMAINE
	08:49		SUB IN: SWIDER, COLE
SUB OUT: 4 MOSS, ISAIAH	08:49		
SUB IN: 2 BRAUN, CHRISTIAN	08:49		
	08:07	14-12	SUB OUT: GILLESPIE, COLLIN
	08:07		SUB OUT: SWIDER, COLE
	08:07		SUB IN: SAMUELS, JERMAINE
	08:07		SUB IN: ROBINSON-EARL, JEREMIAH
SUB OUT: 2 BRAUN, CHRISTIAN	07:51	14-15	
SUB IN: 00 GARRETT, MARCUS	07:51		
	06:03	16-15	SUB OUT: MOORE, JUSTIN
	06:03		SUB OUT: SAMUELS, JERMAINE
	06:03		SUB IN: GILLESPIE, COLLIN
	06:03		SUB IN: SWIDER, COLE
SUB OUT: 30 AGBAJI, OCHAI	06:03		
SUB IN: 4 MOSS, ISAIAH	06:03		
	05:14	16-15	SUB OUT: SLATER, BRANDON
	05:14		SUB IN: MOORE, JUSTIN
SUB OUT: 00 GARRETT, MARCUS	05:14		
SUB IN: 30 AGBAJI, OCHAI	05:14		
	04:17	16-15	SUB OUT: BEY, SADDIQ
	04:17		SUB IN: SAMUELS, JERMAINE
	02:53	18-18	SUB OUT: ROBINSON-EARL, JEREMIAH
	02:53		SUB IN: SLATER, BRANDON
SUB OUT: 4 MOSS, ISAIAH	02:53		
SUB IN: 13 ENARUNA, TRISTAN	02:53		
	01:36	21-23	SUB OUT: SAMUELS, JERMAINE
	01:36		SUB IN: ROBINSON-EARL, JEREMIAH
	01:05	21-23	SUB OUT: GILLESPIE, COLLIN
	01:05		SUB IN: SAMUELS, JERMAINE
	00:47	23-23	SUB OUT: SLATER, BRANDON
	00:47		SUB IN: GILLESPIE, COLLIN
SUB OUT: 35 AZUBUIKE, UDOKA	00:29	23-23	
SUB IN: 4 MOSS, ISAIAH	00:29		

**Kansas 23, Villanova 23**

**Official Substitutions Log**  
**Kansas vs Villanova**  
**Period 2**  
**December 21, 2019 at Wells Fargo Center (sellout) - Philadelphia**



VISITORS: Kansas	Time	Score	HOME: Villanova
00 GARRETT, MARCUS			2 GILLESPIE, COLLIN
1 DOTSON, DEVON			10 SWIDER, COLE
30 AGBAJI, OCHAI			23 SAMUELS, JERMAINE
33 MCCORMACK, DAVID			24 ROBINSON-EARL, JEREMIAH
35 AZUBUIKE, UDOKA			41 BEY, SADDIQ
	20:00	-	SUB OUT: MOORE, JUSTIN
	20:00		SUB IN: BEY, SADDIQ
SUB OUT: 13 ENARUNA, TRISTAN	20:00		
SUB IN: 35 AZUBUIKE, UDOKA	20:00		
	17:12	27-27	SUB OUT: SWIDER, COLE
	17:12		SUB IN: MOORE, JUSTIN
	16:28	27-30	SUB OUT: GILLESPIE, COLLIN
	16:28		SUB IN: SLATER, BRANDON
	16:17	27-30	SUB OUT: SLATER, BRANDON
	16:17		SUB IN: GILLESPIE, COLLIN
	14:52	27-33	SUB OUT: BEY, SADDIQ
	14:52		SUB IN: SWIDER, COLE
SUB OUT: 4 MOSS, ISAIAH	14:52		
SUB OUT: 33 MCCORMACK, DAVID	14:52		
SUB IN: 2 BRAUN, CHRISTIAN	14:52		
SUB IN: 13 ENARUNA, TRISTAN	14:52		
	13:21	31-35	SUB OUT: SWIDER, COLE
	13:21		SUB OUT: ROBINSON-EARL, JEREMIAH
	13:21		SUB IN: SLATER, BRANDON
	13:21		SUB IN: BEY, SADDIQ
SUB OUT: 35 AZUBUIKE, UDOKA	12:31	31-37	
SUB IN: 33 MCCORMACK, DAVID	12:31		
	12:31		SUB OUT: SLATER, BRANDON
	12:31		SUB OUT: SAMUELS, JERMAINE
	12:31		SUB IN: SWIDER, COLE
	12:31		SUB IN: ROBINSON-EARL, JEREMIAH
	11:24	35-37	SUB OUT: SWIDER, COLE
	11:24		SUB IN: SAMUELS, JERMAINE
	08:57	41-43	SUB OUT: ROBINSON-EARL, JEREMIAH
	08:57		SUB IN: SWIDER, COLE
	07:40	44-48	SUB OUT: SWIDER, COLE
	07:40		SUB IN: SLATER, BRANDON
SUB OUT: 33 MCCORMACK, DAVID	07:40		
SUB IN: 35 AZUBUIKE, UDOKA	07:40		
	07:17	45-48	SUB OUT: SLATER, BRANDON
	07:17		SUB IN: SWIDER, COLE
	05:48	47-48	SUB OUT: SWIDER, COLE
	05:48		SUB IN: ROBINSON-EARL, JEREMIAH
	01:49	55-51	SUB OUT: ROBINSON-EARL, JEREMIAH
	01:49		SUB IN: SWIDER, COLE
	01:07	55-53	SUB OUT: SWIDER, COLE
	01:07		SUB IN: ROBINSON-EARL, JEREMIAH
SUB OUT: 35 AZUBUIKE, UDOKA	01:07		
SUB IN: 33 MCCORMACK, DAVID	01:07		
SUB OUT: 33 MCCORMACK, DAVID	00:17	55-56	
SUB IN: 35 AZUBUIKE, UDOKA	00:17		
	00:13	55-56	SUB OUT: ROBINSON-EARL, JEREMIAH
	00:13		SUB IN: SWIDER, COLE
SUB OUT: 35 AZUBUIKE, UDOKA	00:13		
SUB IN: 4 MOSS, ISAIAH	00:13		
	00:11	55-56	SUB OUT: SWIDER, COLE
	00:11		SUB IN: ROBINSON-EARL, JEREMIAH
SUB OUT: 13 ENARUNA, TRISTAN	00:04	55-56	
SUB IN: 35 AZUBUIKE, UDOKA	00:04		

**Kansas 55, Villanova 56**

**Official Shot Chart**  
**Kansas vs Villanova**  
**PERIOD 1 Shots**  
**December 21, 2019 at Wells Fargo Center (sellout) - Philadelphia**



**Villanova**

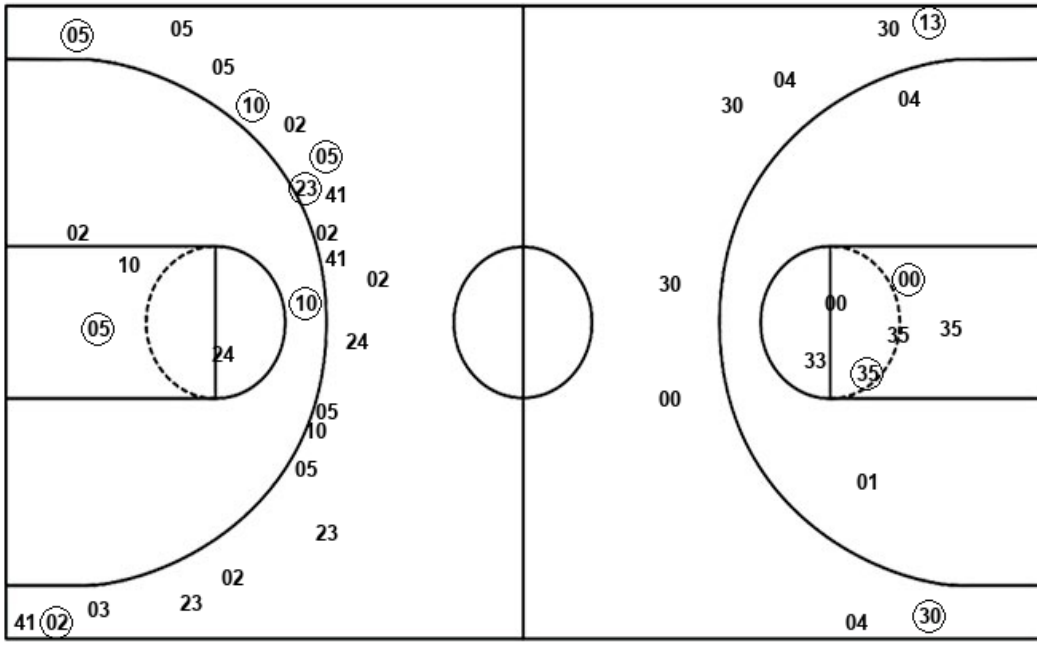
**Kansas**

Layups  
 02 (24) 05 05

Layups  
 (33) (33) 01 (35) 01  
 (35) (01) 33 00 (01)

Dunks  
 (41)

Dunks  
 35



VIL : Period 1	Made	Att	Pct
Layups	1	4	25.0
Dunks	1	1	100.0
2PT Field Goals	4	10	40.0
3PT Field Goals	5	21	23.8
<b>Total Field Goals</b>	<b>9</b>	<b>31</b>	<b>29.0</b>

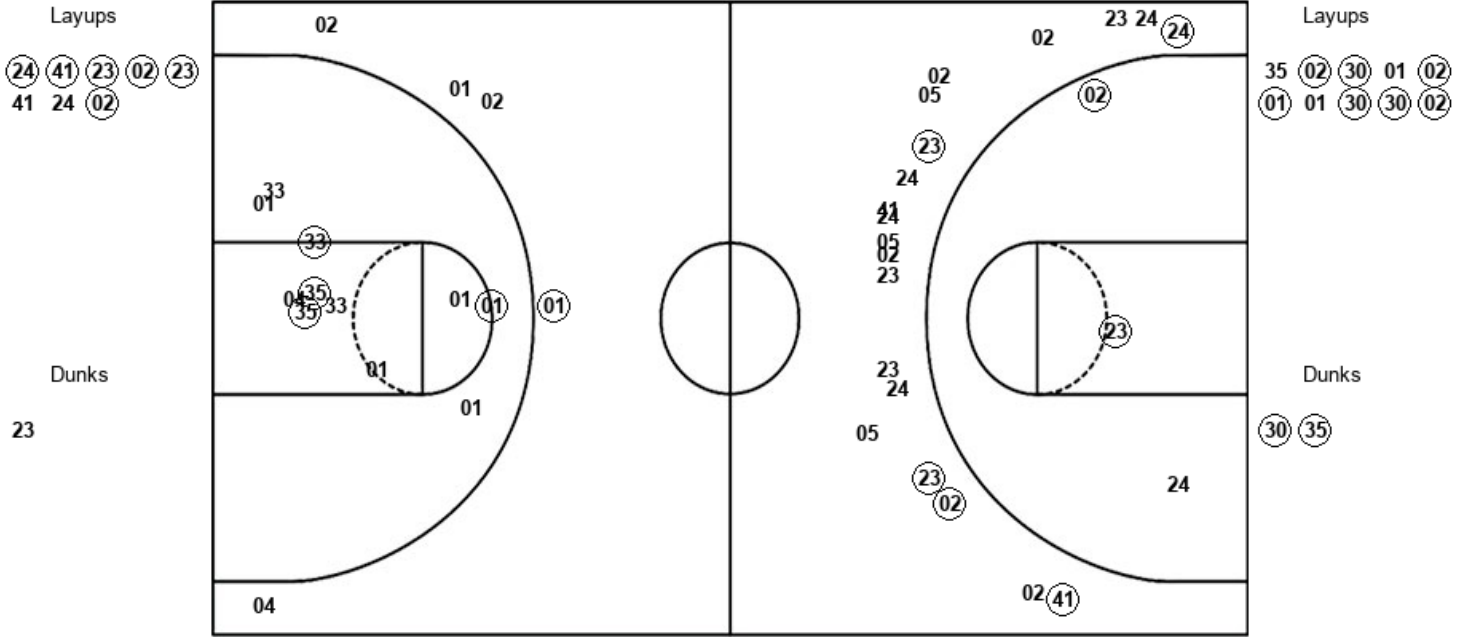
KAN : Period 1	Made	Att	Pct
Layups	6	10	60.0
Dunks	0	1	00.0
2PT Field Goals	8	19	42.1
3PT Field Goals	2	8	25.0
<b>Total Field Goals</b>	<b>10</b>	<b>27</b>	<b>37.0</b>

Official Shot Chart  
**Kansas vs Villanova**  
 PERIOD 2 Shots  
 December 21, 2019 at Wells Fargo Center (sellout) - Philadelphia



**Villanova**

**Kansas**



VIL : Period 2	Made	Att	Pct
Layups	6	8	75.0
Dunks	0	1	00.0
2PT Field Goals	8	12	66.7
3PT Field Goals	5	20	25.0
<b>Total Field Goals</b>	<b>13</b>	<b>32</b>	<b>40.6</b>

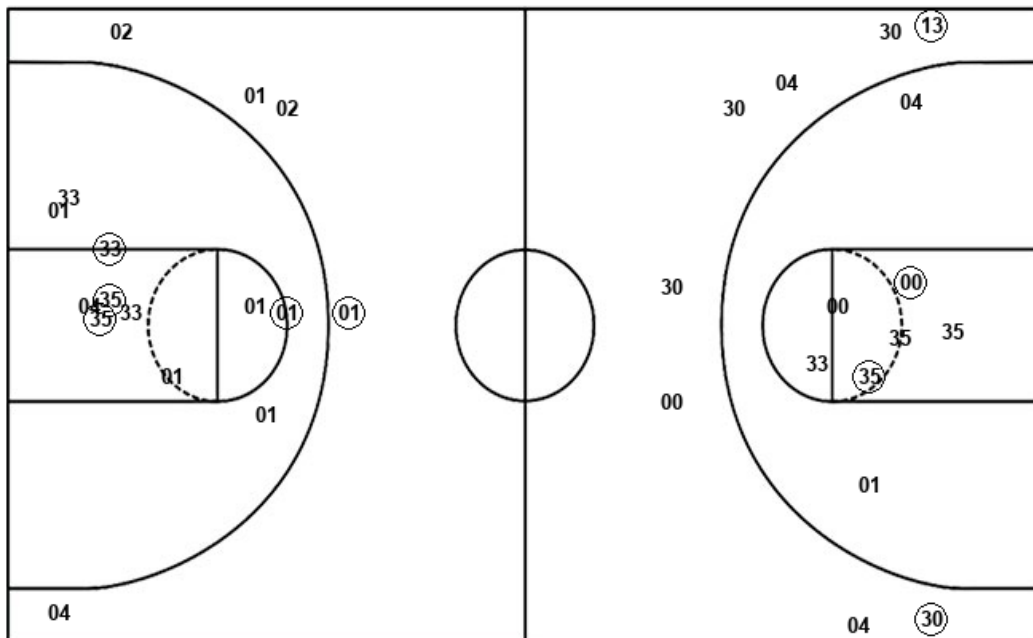
KAN : Period 2	Made	Att	Pct
Layups	7	10	70.0
Dunks	2	2	100.0
2PT Field Goals	13	23	56.5
3PT Field Goals	1	5	20.0
<b>Total Field Goals</b>	<b>14</b>	<b>28</b>	<b>50.0</b>



**Official Shot Chart**  
**Kansas vs Villanova**  
**Kansas Team Shots**  
**December 21, 2019 at Wells Fargo Center (sellout) - Philadelphia**



Layups



Layups

(33) (33) 01 (35) 01  
 (35) (01) 33 00 (01)  
 35 (02) (30) 01 (02)  
 (01) 01 (30) (30) (02)

Dunks

Dunks

35 (30) (35)

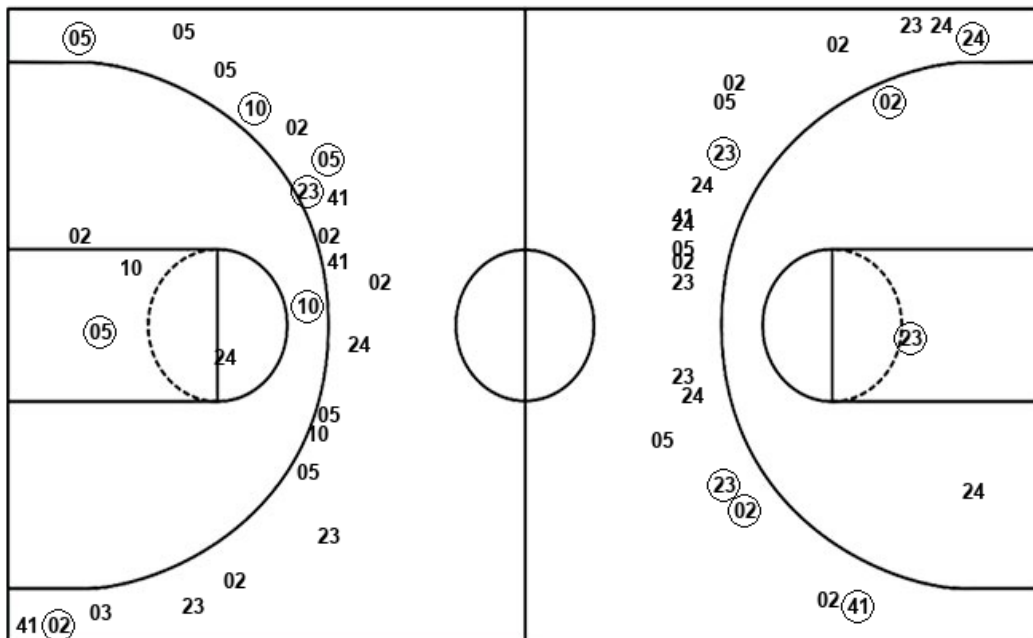
KAN : Period 1	Made	Att	Pct
Layups	6	10	60.0
Dunks	0	1	00.0
2PT Field Goals	8	19	42.1
3PT Field Goals	2	8	25.0
<b>Total Field Goals</b>	<b>10</b>	<b>27</b>	<b>37.0</b>

KAN : Period 2	Made	Att	Pct
Layups	7	10	70.0
Dunks	2	2	100.0
2PT Field Goals	13	23	56.5
3PT Field Goals	1	5	20.0
<b>Total Field Goals</b>	<b>14</b>	<b>28</b>	<b>50.0</b>

**Official Shot Chart**  
**Kansas vs Villanova**  
**Villanova Team Shots**  
 December 21, 2019 at Wells Fargo Center (sellout) - Philadelphia



Layups



Layups

Dunks

Dunks

VIL : Period 1	Made	Att	Pct
Layups	1	4	25.0
Dunks	1	1	100.0
2PT Field Goals	4	10	40.0
3PT Field Goals	5	21	23.8
<b>Total Field Goals</b>	<b>9</b>	<b>31</b>	<b>29.0</b>

VIL : Period 2	Made	Att	Pct
Layups	6	8	75.0
Dunks	0	1	00.0
2PT Field Goals	8	12	66.7
3PT Field Goals	5	20	25.0
<b>Total Field Goals</b>	<b>13</b>	<b>32</b>	<b>40.6</b>