

FINAL SCORE



Duke

64



Kansas

69

November 15, 2022 • Gainbridge Fieldhouse - Indianapolis, IN

FINAL STATISTICS

Official Box Score
Duke vs Kansas
Game Totals -- Final Statistics
November 15, 2022 at Gainbridge Fieldhouse - Indianapolis, IN

Duke 64

No.	Player	S	Pts	FG	3FG	FT	OR	DR	TR	PF	A	TO	Blk	Stl	Min	+/-
03	ROACH, JEREMY	G	16	6-17	1-5	3-4	1	3	4	2	1	3	0	1	40	-6
05	PROCTOR, TYRESE	G	9	3-9	1-5	2-2	1	2	3	2	3	3	0	0	28	-2
15	YOUNG, RYAN	C	6	3-4	0-0	0-0	2	1	3	2	0	4	0	1	20	-2
25	MITCHELL, MARK	F	7	3-7	0-0	1-2	2	3	5	3	0	3	0	0	30	-6
30	FILIPOWSKI, KYLE	C	17	6-18	1-6	4-4	6	8	14	3	1	3	1	1	33	-3
01	LIVELY II, DERECK	C	4	2-3	0-0	0-0	4	1	5	1	1	0	1	0	20	0
02	BLAKES, JAYLEN	G	5	1-5	0-2	3-4	0	3	3	2	2	1	0	0	18	-5
13	GRANDISON, JACOB	F	0	0-4	0-3	0-0	0	1	1	1	0	1	0	0	10	-1
TEAM							5	3	8	0		0				
TOTALS			64	24-67	3-21	13-16	21	25	46	16	8	18	2	3	200	

Shooting By Period

Period	FG	FG%	3FG	3FG%	FT	FT%
1st Half	10-32	31%	1-11	09%	8-9	89%
2nd Half	14-35	40%	2-10	20%	5-7	71%
Game	24-67	35.8%	3-21	14.3%	13-16	81.3%

Deadball Rebounds: 1,0

Last FG: 2nd-00:15

Biggest Run: 6-0

Largest lead: By 6 at 2nd-12:00

*Technical Fouls: #05 PROCTOR, T (Admin Technical)
@ 1st - 11:40;*

Kansas 69

No.	Player	S	Pts	FG	3FG	FT	OR	DR	TR	PF	A	TO	Blk	Stl	Min	+/-
03	HARRIS, DAJUAN	G	6	3-7	0-2	0-0	2	2	4	4	10	1	1	0	35	4
04	DICK, GRADEY	G	14	6-11	1-4	1-1	0	1	1	3	0	0	0	1	32	6
10	WILSON, JALEN	F	25	11-26	0-7	3-4	5	6	11	1	5	3	1	1	38	7
15	MCCULLAR, KEVIN	G	12	5-10	2-4	0-1	2	4	6	3	2	4	2	1	29	8
24	ADAMS, JR., KJ	F	8	4-4	0-0	0-1	0	2	2	4	2	3	2	1	20	5
00	PETTIFORD, BOBBY	G	2	1-2	0-0	0-0	0	3	3	0	2	2	1	0	17	3
01	YESUFU, JOSEPH	G	0	0-4	0-2	0-0	1	0	1	0	0	0	0	1	5	-1
23	UDEH JR., ERNEST	C	0	0-1	0-0	0-0	0	1	1	1	0	0	4	0	13	-13
35	EJIOFOR, ZUBY	F	2	1-2	0-0	0-0	2	3	5	2	0	2	2	0	10	6
TEAM							0	1	1	0		0				
TOTALS			69	31-67	3-19	4-7	12	23	35	18	21	15	13	5	200	

Shooting By Period

Period	FG	FG%	3FG	3FG%	FT	FT%
1st Half	15-33	45%	2-13	15%	1-3	33%
2nd Half	16-34	47%	1-6	17%	3-4	75%
Game	31-67	46.3%	3-19	15.8%	4-7	57.1%

Deadball Rebounds: 2,1

Last FG: 2nd-00:22

Biggest Run: 12-0

Largest lead: By 11 at 1st-11:03

Technical Fouls: None.

Game Notes:

Officials: **Doug Simons, Roger Ayers, Jeffrey Anderson**
Attendance: **15828**

Start Time: **10:24 PM ET**
End Time: **12:21 AM ET**
Game Duration: **1:57**
Neutral Court;

Score	1st	2nd	TOT
DUK	29	35	64
KU	33	36	69

DUK led for 15:47. KU led for 23:06.
Game was tied for 1:07.
Times tied: **3** Lead Changes: **11**

Points	DUK	KU
In the Paint	42	48
Off Turns	12	19
2nd Chance	19	12
Fast Break	6	12
Bench	9	4
Per Poss	0.877 30/73	0.986 33/70

Official Box Score
Duke vs Kansas
First Half Statistics Only
November 15, 2022 at Gainbridge Fieldhouse - Indianapolis, IN

Duke 29

No.	Player	S	Pts	FG	3FG	FT	OR	DR	TR	PF	A	TO	Blk	Stl	Min	+/-
03	ROACH, JEREMY	G	11	4-9	0-2	3-3	0	1	1	0	0	2	0	1	20	-4
05	PROCTOR, TYRESE	G	0	0-2	0-2	0-0	0	1	1	2	0	3	0	0	9	-5
15	YOUNG, RYAN	C	4	2-2	0-0	0-0	1	1	2	1	0	1	0	1	11	-1
25	MITCHELL, MARK	F	0	0-1	0-0	0-0	0	2	2	2	0	2	0	0	10	-5
30	FILIPOWSKI, KYLE	C	7	2-8	1-3	2-2	2	3	5	2	1	1	0	1	14	-4
01	LIVELY II, DERECK	C	2	1-2	0-0	0-0	3	0	3	0	0	0	0	0	10	-2
02	BLAKES, JAYLEN	G	5	1-4	0-1	3-4	0	2	2	1	1	1	0	0	15	2
13	GRANDISON, JACOB	F	0	0-4	0-3	0-0	0	1	1	1	0	1	0	0	10	-1
TEAM							3	2	5	0		0				
TOTALS			29	10-32	1-11	8-9	9	13	22	9	2	11	0	3	100	

Shooting By Period

Period	FG	FG%	3FG	3FG%	FT	FT%
1st Half	10-32	31%	1-11	09%	8-9	89%
Game	24-67	35.8%	3-21	14.3%	13-16	81.3%

Deadball Rebounds: 1,0
Last FG Half: DUK 2nd-00:15

Kansas 33

No.	Player	S	Pts	FG	3FG	FT	OR	DR	TR	PF	A	TO	Blk	Stl	Min	+/-
03	HARRIS, DAJUAN	G	2	1-2	0-1	0-0	0	0	0	1	6	1	1	0	16	5
04	DICK, GRADEY	G	7	3-8	0-3	1-1	0	0	0	1	0	0	0	1	18	8
10	WILSON, JALEN	F	10	5-10	0-4	0-1	2	4	6	1	3	1	0	0	18	6
15	MCCULLAR, KEVIN	G	8	3-5	2-3	0-1	1	3	4	1	1	4	2	1	16	0
24	ADAMS, JR.,KJ	F	4	2-2	0-0	0-0	0	1	1	2	0	1	2	0	9	9
00	PETTIFORD, BOBBY	G	0	0-1	0-0	0-0	0	1	1	0	1	2	0	0	8	0
01	YESUFU, JOSEPH	G	0	0-2	0-2	0-0	1	0	1	0	0	0	0	0	4	-3
23	UDEH JR., ERNEST	C	0	0-1	0-0	0-0	0	1	1	1	0	0	2	0	7	-6
35	EJIOFOR, ZUBY	F	2	1-2	0-0	0-0	1	2	3	2	0	1	0	0	4	1
TEAM							0	1	1	0		0				
TOTALS			33	15-33	2-13	1-3	5	13	18	9	11	10	7	2	100	

Shooting By Period

Period	FG	FG%	3FG	3FG%	FT	FT%
1st Half	15-33	45%	2-13	15%	1-3	33%
Game	31-67	46.3%	3-19	15.8%	4-7	57.1%

Deadball Rebounds: 2,1
Last FG Half: KU 2nd-00:22

Game Notes:

Officials: **Doug Sirmons, Roger Ayers, Jeffrey Anderson**
Attendance: **15828**

Start Time: **10:24 PM ET**
End Time: **12:21 AM ET**
Game Duration: **1:57**
Neutral Court;

Score	1st	2nd	TOT
DUK	29	35	64
KU	33	36	69

Points (This Period)	DUK	KU
In the Paint	18	18
Off Turns	8	8
2nd Chance	9	4
Fast Break	2	5
Bench	7	2
Per Poss	0.763 14/38	0.846 16/39

Official Play-By-Play
Duke vs Kansas
First Half
November 15, 2022 at Gainbridge Fieldhouse - Indianapolis, IN

Period 1

Starters:

Duke: 3 ROACH, JEREMY (G); 5 PROCTOR, TYRESE (G); 15 YOUNG, RYAN (C); 25 MITCHELL, MARK (F); 30 FILIPOWSKI, KYLE (C);
Kansas: 3 HARRIS, DAJUAN (G); 4 DICK, GRADEY (G); 10 WILSON, JALEN (F); 15 MCCULLAR, KEVIN (G); 24 ADAMS, JR., KJ (F);

Time	VISITORS: Duke	Score	Margin	HOME: Kansas
19:35	MISSED 3PTR by FILIPOWSKI, KYLE			
19:32				REBOUND (DEF) by ADAMS, JR.,KJ
19:19				MISSED JUMPER by MCCULLAR, KEVIN
19:18	REBOUND (DEF) by YOUNG, RYAN			
19:09	GOOD! LAYUP by ROACH, JEREMY	0-2	V 2	
18:48				MISSED 3PTR by WILSON, JALEN
18:45	REBOUND (DEF) by FILIPOWSKI, KYLE			
18:40	GOOD! LAYUP by FILIPOWSKI, KYLE [FB]	0-4	V 4	
18:20		3-4	V 1	GOOD! 3PTR by MCCULLAR, KEVIN
18:20				ASSIST by HARRIS, DAJUAN
18:01				FOUL (PERSONAL) by HARRIS, DAJUAN
17:47	TURNOVER (OUTOFBOUNDS) by MITCHELL, MARK			
17:27	FOUL (PERSONAL) by YOUNG, RYAN			
17:17		5-4	H 1	GOOD! LAYUP by ADAMS, JR.,KJ
17:17				ASSIST by MCCULLAR, KEVIN
17:00	MISSED LAYUP by ROACH, JEREMY			
17:00				BLOCK by ADAMS, JR.,KJ
16:56	REBOUND (OFF) by YOUNG, RYAN			
16:56	GOOD! LAYUP by YOUNG, RYAN	5-6	V 1	
16:47				MISSED 3PTR by DICK, GRADEY
16:43				REBOUND (OFF) by WILSON, JALEN
16:43		7-6	H 1	GOOD! LAYUP by WILSON, JALEN
16:30	MISSED JUMPER by ROACH, JEREMY			
16:30				BLOCK by MCCULLAR, KEVIN
16:30	REBOUND (OFF) by TEAM			
16:25	MISSED 3PTR by PROCTOR, TYRESE			
16:21	REBOUND (OFF) by TEAM			
16:16	FOUL (OFF) by PROCTOR, TYRESE			
16:16	TURNOVER (OFFENSIVE) by PROCTOR, TYRESE			
16:05		9-6	H 3	GOOD! JUMPER by WILSON, JALEN
15:46	MISSED JUMPER by FILIPOWSKI, KYLE			
15:43				REBOUND (DEF) by WILSON, JALEN
15:35		12-6	H 6	GOOD! 3PTR by MCCULLAR, KEVIN
15:35				ASSIST by WILSON, JALEN
15:17				
15:17	SUB OUT: PROCTOR, TYRESE			
15:17	SUB OUT: YOUNG, RYAN			
15:17	SUB OUT: FILIPOWSKI, KYLE			
15:17	SUB IN: LIVELY II, DERECK			
15:17	SUB IN: BLAKES, JAYLEN			
15:17	SUB IN: GRANDISON, JACOB			
15:13	MISSED JUMPER by MITCHELL, MARK			
15:09				REBOUND (DEF) by WILSON, JALEN
14:48				MISSED 3PTR by WILSON, JALEN
14:46	REBOUND (DEF) by TEAM			
14:27	MISSED LAYUP by BLAKES, JAYLEN			
14:25				REBOUND (DEF) by WILSON, JALEN
14:23		14-6	H 8	GOOD! LAYUP by DICK, GRADEY [FB]
14:23				ASSIST by WILSON, JALEN
14:23	FOUL (PERSONAL) by MITCHELL, MARK			
14:23		15-6	H 9	GOOD! FT by DICK, GRADEY [FB]
14:05	MISSED 3PTR by GRANDISON, JACOB			
14:03				REBOUND (DEF) by TEAM
14:03				SUB OUT: HARRIS, DAJUAN
14:03				SUB IN: PETTIFORD, BOBBY
13:49				TURNOVER (BADPASS) by WILSON, JALEN
13:49	STEAL by ROACH, JEREMY			
13:44	TURNOVER (LOSTBALL) by ROACH, JEREMY			
13:44	SUB OUT: MITCHELL, MARK			
13:44	SUB IN: FILIPOWSKI, KYLE			
13:44				SUB OUT: ADAMS, JR.,KJ
13:44				SUB IN: UDEH JR., ERNEST
13:23				MISSED JUMPER by DICK, GRADEY
13:20				REBOUND (OFF) by WILSON, JALEN
13:20		17-6	H 11	GOOD! LAYUP by WILSON, JALEN

Time	VISITORS: Duke	Score	Margin	HOME: Kansas
13:18				FOUL (PERSONAL) by DICK, GRADEY
13:06	MISSED 3PTR by GRANDISON, JACOB			
13:04				REBOUND (DEF) by WILSON, JALEN
12:52				TURNOVER (LOSTBALL) by MCCULLAR, KEVIN
12:52				SUB OUT: DICK, GRADEY
12:52				SUB IN: YESUFU, JOSEPH
12:41	GOOD! LAYUP by ROACH, JEREMY	17-8	H 9	
12:15				MISSED 3PTR by MCCULLAR, KEVIN
12:11				REBOUND (OFF) by YESUFU, JOSEPH
12:10				MISSED 3PTR by WILSON, JALEN
12:08	REBOUND (DEF) by TEAM			
12:08	SUB OUT: FILIPOWSKI, KYLE			
12:08	SUB IN: PROCTOR, TYRESE			
11:41	MISSED 3PTR by PROCTOR, TYRESE			
11:41				BLOCK by UDEH JR., ERNEST
11:40	REBOUND (OFF) by TEAM			
11:40	FOUL (TECH) by PROCTOR, TYRESE			
11:40	TURNOVER (OFFENSIVE) by PROCTOR, TYRESE			
11:40				
11:40				SUB OUT: MCCULLAR, KEVIN
11:40				SUB IN: DICK, GRADEY
11:40				MISSED FT by WILSON, JALEN
11:40				REBOUND (OFF) by TEAM
11:29				TURNOVER (BADPASS) by PETTIFORD, BOBBY
11:17	MISSED 3PTR by GRANDISON, JACOB			
11:13				REBOUND (DEF) by UDEH JR., ERNEST
11:03		19-8	H 11	GOOD! LAYUP by DICK, GRADEY
11:03				ASSIST by WILSON, JALEN
10:38				FOUL (PERSONAL) by WILSON, JALEN
10:38	GOOD! FT by BLAKES, JAYLEN	19-9	H 10	
10:38	SUB OUT: LIVELY II, DERECK			
10:38	SUB OUT: GRANDISON, JACOB			
10:38	SUB IN: YOUNG, RYAN			
10:38	SUB IN: MITCHELL, MARK			
10:38				SUB OUT: WILSON, JALEN
10:38				SUB IN: MCCULLAR, KEVIN
10:38	GOOD! FT by BLAKES, JAYLEN	19-10	H 9	
10:29				MISSED 3PTR by YESUFU, JOSEPH
10:25				REBOUND (OFF) by MCCULLAR, KEVIN
10:23				MISSED 3PTR by YESUFU, JOSEPH
10:20	REBOUND (DEF) by MITCHELL, MARK			
10:12				FOUL (PERSONAL) by MCCULLAR, KEVIN
10:12	GOOD! FT by BLAKES, JAYLEN	19-11	H 8	
10:12				SUB OUT: PETTIFORD, BOBBY
10:12				SUB IN: HARRIS, DAJUAN
10:11	MISSED FT by BLAKES, JAYLEN			
10:10				REBOUND (DEF) by MCCULLAR, KEVIN
09:43				TURNOVER (BADPASS) by MCCULLAR, KEVIN
09:43	STEAL by YOUNG, RYAN			
09:38	FOUL (OFF) by BLAKES, JAYLEN			
09:38	TURNOVER (OFFENSIVE) by BLAKES, JAYLEN			
09:38				SUB OUT: UDEH JR., ERNEST
09:38				SUB IN: ADAMS, JR.,KJ
09:08				MISSED 3PTR by DICK, GRADEY
09:05	REBOUND (DEF) by PROCTOR, TYRESE			
09:04	FOUL (OFF) by MITCHELL, MARK			
09:04	TURNOVER (OFFENSIVE) by MITCHELL, MARK			
09:04	SUB OUT: MITCHELL, MARK			
09:04	SUB IN: FILIPOWSKI, KYLE			
09:04				SUB OUT: YESUFU, JOSEPH
09:04				SUB IN: WILSON, JALEN
08:54				TURNOVER (BADPASS) by ADAMS, JR.,KJ
08:40	GOOD! LAYUP by YOUNG, RYAN	19-13	H 6	
08:22		21-13	H 8	GOOD! LAYUP by ADAMS, JR.,KJ
08:22				ASSIST by HARRIS, DAJUAN
08:14	GOOD! JUMPER by ROACH, JEREMY [PNT]	21-15	H 6	
07:53		23-15	H 8	GOOD! JUMPER by MCCULLAR, KEVIN
07:53				ASSIST by HARRIS, DAJUAN
07:53	FOUL (PERSONAL) by FILIPOWSKI, KYLE			
07:53				
07:53				MISSED FT by MCCULLAR, KEVIN
07:51	REBOUND (DEF) by BLAKES, JAYLEN			
07:32	FOUL (OFF) by PROCTOR, TYRESE			
07:32	TURNOVER (OFFENSIVE) by PROCTOR, TYRESE			
07:32	SUB OUT: PROCTOR, TYRESE			
07:32	SUB IN: MITCHELL, MARK			

Time	VISITORS: Duke	Score	Margin	HOME: Kansas
07:16				MISSED LAYUP by WILSON, JALEN
07:13	REBOUND (DEF) by MITCHELL, MARK			
07:10	MISSED 3PTR by ROACH, JEREMY			
07:07	REBOUND (OFF) by FILIPOWSKI, KYLE			
07:06	MISSED JUMPER by FILIPOWSKI, KYLE			
07:06				BLOCK by ADAMS, JR.,KJ
07:05	REBOUND (OFF) by FILIPOWSKI, KYLE			
07:05				FOUL (PERSONAL) by ADAMS, JR.,KJ
07:05	GOOD! FT by FILIPOWSKI, KYLE	23-16	H 7	
07:05	GOOD! FT by FILIPOWSKI, KYLE	23-17	H 6	
06:48				MISSED 3PTR by HARRIS, DAJUAN
06:44	REBOUND (DEF) by FILIPOWSKI, KYLE			
06:40	MISSED LAYUP by FILIPOWSKI, KYLE			
06:40				BLOCK by MCCULLAR, KEVIN
06:35				REBOUND (DEF) by MCCULLAR, KEVIN
06:34		25-17	H 8	GOOD! LAYUP by WILSON, JALEN [FB]
06:34				ASSIST by HARRIS, DAJUAN
06:26				FOUL (PERSONAL) by ADAMS, JR.,KJ
06:26				SUB OUT: ADAMS, JR.,KJ
06:26				SUB IN: UDEH JR., ERNEST
06:17	GOOD! 3PTR by FILIPOWSKI, KYLE	25-20	H 5	
06:17	ASSIST by BLAKES, JAYLEN			
06:04		27-20	H 7	GOOD! JUMPER by DICK, GRADEY
06:04				ASSIST by HARRIS, DAJUAN
05:39	TURNOVER (BADPASS) by YOUNG, RYAN			
05:39				STEAL by DICK, GRADEY
05:32				TURNOVER (TRAVEL) by MCCULLAR, KEVIN
05:32	SUB OUT: YOUNG, RYAN			
05:32	SUB OUT: MITCHELL, MARK			
05:32	SUB IN: LIVELY II, DERECK			
05:32	SUB IN: GRANDISON, JACOB			
05:20	FOUL (OFF) by GRANDISON, JACOB			
05:20	TURNOVER (OFFENSIVE) by GRANDISON, JACOB			
05:03				MISSED LAYUP by UDEH JR., ERNEST
05:00	REBOUND (DEF) by GRANDISON, JACOB			
04:57	MISSED LAYUP by BLAKES, JAYLEN			
04:57				BLOCK by HARRIS, DAJUAN
04:54	REBOUND (OFF) by LIVELY II, DERECK			
04:53	MISSED DUNK by LIVELY II, DERECK			
04:53				BLOCK by UDEH JR., ERNEST
04:51				REBOUND (DEF) by MCCULLAR, KEVIN
04:45				TURNOVER (BADPASS) by HARRIS, DAJUAN
04:35	TURNOVER (BADPASS) by ROACH, JEREMY			
04:35				STEAL by MCCULLAR, KEVIN
04:29				TURNOVER (BADPASS) by MCCULLAR, KEVIN
04:14	MISSED LAYUP by FILIPOWSKI, KYLE			
04:11	REBOUND (OFF) by LIVELY II, DERECK			
04:11	GOOD! DUNK by LIVELY II, DERECK	27-22	H 5	
03:56				MISSED JUMPER by DICK, GRADEY
03:53	REBOUND (DEF) by FILIPOWSKI, KYLE			
03:47	MISSED LAYUP by ROACH, JEREMY			
03:44	REBOUND (OFF) by LIVELY II, DERECK			
03:39	GOOD! LAYUP by ROACH, JEREMY	27-24	H 3	
03:39				FOUL (PERSONAL) by UDEH JR., ERNEST
03:39				
03:39				SUB OUT: MCCULLAR, KEVIN
03:39				SUB OUT: UDEH JR., ERNEST
03:39				SUB IN: PETTIFORD, BOBBY
03:39				SUB IN: EJIOFOR, ZUBY
03:39	GOOD! FT by ROACH, JEREMY	27-25	H 2	
03:22				FOUL (OFF) by EJIOFOR, ZUBY
03:22				TURNOVER (OFFENSIVE) by EJIOFOR, ZUBY
03:04	MISSED 3PTR by FILIPOWSKI, KYLE			
03:00				REBOUND (DEF) by EJIOFOR, ZUBY
02:50		29-25	H 4	GOOD! LAYUP by HARRIS, DAJUAN
02:39	FOUL (OFF) by FILIPOWSKI, KYLE			
02:39	TURNOVER (OFFENSIVE) by FILIPOWSKI, KYLE			
02:31		31-25	H 6	GOOD! JUMPER by WILSON, JALEN
02:31				ASSIST by PETTIFORD, BOBBY
02:12	MISSED 3PTR by BLAKES, JAYLEN			
02:09				REBOUND (DEF) by PETTIFORD, BOBBY
02:09				TURNOVER (LOSTBALL) by PETTIFORD, BOBBY
02:09	STEAL by FILIPOWSKI, KYLE			
02:06	GOOD! LAYUP by BLAKES, JAYLEN	31-27	H 4	
02:06	ASSIST by FILIPOWSKI, KYLE			
01:48		33-27	H 6	GOOD! DUNK by EJIOFOR, ZUBY

Time	VISITORS: Duke	Score	Margin	HOME: Kansas
01:48				ASSIST by HARRIS, DAJUAN
01:34	MISSED JUMPER by GRANDISON, JACOB			
01:31				REBOUND (DEF) by EJIOFOR, ZUBY
01:06				MISSED 3PTR by WILSON, JALEN
01:03	REBOUND (DEF) by BLAKES, JAYLEN			
00:59	MISSED 3PTR by ROACH, JEREMY			
00:58				REBOUND (DEF) by TEAM
00:58				TIMEOUT 30SEC
00:58	SUB OUT: LIVELY II, DERECK			
00:58	SUB OUT: FILIPOWSKI, KYLE			
00:58	SUB IN: YOUNG, RYAN			
00:58	SUB IN: MITCHELL, MARK			
00:41				MISSED 3PTR by DICK, GRADEY
00:41	REBOUND (DEF) by ROACH, JEREMY			
00:23	TIMEOUT 30SEC			
00:23				SUB OUT: DICK, GRADEY
00:23				SUB IN: MCCULLAR, KEVIN
00:18				FOUL (PERSONAL) by EJIOFOR, ZUBY
00:18	GOOD! FT by ROACH, JEREMY	33-28	H 5	
00:18	SUB OUT: MITCHELL, MARK			
00:18	SUB IN: LIVELY II, DERECK			
00:18	GOOD! FT by ROACH, JEREMY	33-29	H 4	
00:00				MISSED JUMPER by PETTIFORD, BOBBY
00:00				REBOUND (OFF) by EJIOFOR, ZUBY
00:00				MISSED LAYUP by EJIOFOR, ZUBY

Duke 29, Kansas 33

Points (This Period)	DUK	KU
In the Paint	18	18
Off Turns	8	8
2nd Chance	9	4
Fast Break	2	5
Bench	7	2
Per Poss	0.763 14/38	0.846 16/39

Official Box Score
Duke vs Kansas
Second Half Statistics Only
November 15, 2022 at Gainbridge Fieldhouse - Indianapolis, IN

Duke 35

No.	Player	S	Pts	FG	3FG	FT	OR	DR	TR	PF	A	TO	Blk	Stl	Min	+/-
03	ROACH, JEREMY	G	5	2-8	1-3	0-1	1	2	3	2	1	1	0	0	20	-2
05	PROCTOR, TYRESE	G	9	3-7	1-3	2-2	1	1	2	0	3	0	0	0	19	3
15	YOUNG, RYAN	C	2	1-2	0-0	0-0	1	0	1	1	0	3	0	0	9	-1
25	MITCHELL, MARK	F	7	3-6	0-0	1-2	2	1	3	1	0	1	0	0	20	-1
30	FILIPOWSKI, KYLE	C	10	4-10	0-3	2-2	4	5	9	1	0	2	1	0	19	1
01	LIVELY II, DERECK	C	2	1-1	0-0	0-0	1	1	2	1	1	0	1	0	11	2
02	BLAKES, JAYLEN	G	0	0-1	0-1	0-0	0	1	1	1	1	0	0	0	3	-7
13	GRANDISON, JACOB	F	0	0-0	0-0	0-0	0	0	0	0	0	0	0	0	0	0
TEAM							2	1	3	0		0				
TOTALS			35	14-35	2-10	5-7	12	12	24	7	6	7	2	0	100	

Shooting By Period

Period	FG	FG%	3FG	3FG%	FT	FT%
2nd Half	14-35	40%	2-10	20%	5-7	71%
Game	24-67	35.8%	3-21	14.3%	13-16	81.3%

Deadball Rebounds: 1,0
Last FG Half: DUK -

Kansas 36

No.	Player	S	Pts	FG	3FG	FT	OR	DR	TR	PF	A	TO	Blk	Stl	Min	+/-
03	HARRIS, DAJUAN	G	4	2-5	0-1	0-0	2	2	4	3	4	0	0	0	19	-1
04	DICK, GRADEY	G	7	3-3	1-1	0-0	0	1	1	2	0	0	0	0	14	-2
10	WILSON, JALEN	F	15	6-16	0-3	3-3	3	2	5	0	2	2	1	1	20	1
15	MCCULLAR, KEVIN	G	4	2-5	0-1	0-0	1	1	2	2	1	0	0	0	14	8
24	ADAMS, JR.,KJ	F	4	2-2	0-0	0-1	0	1	1	2	2	2	0	1	10	-4
00	PETTIFORD, BOBBY	G	2	1-1	0-0	0-0	0	2	2	0	1	0	1	0	10	3
01	YESUFU, JOSEPH	G	0	0-2	0-0	0-0	0	0	0	0	0	0	0	1	1	2
23	UDEH JR., ERNEST	C	0	0-0	0-0	0-0	0	0	0	0	0	0	2	0	6	-7
35	EJIOFOR, ZUBY	F	0	0-0	0-0	0-0	1	1	2	0	0	1	2	0	6	5
TEAM							0	0	0	0		0				
TOTALS			36	16-34	1-6	3-4	7	10	17	9	10	5	6	3	100	

Shooting By Period

Period	FG	FG%	3FG	3FG%	FT	FT%
2nd Half	16-34	47%	1-6	17%	3-4	75%
Game	31-67	46.3%	3-19	15.8%	4-7	57.1%

Deadball Rebounds: 2,1
Last FG Half: KU -

Game Notes:
Officials: **Doug Sirmons, Roger Ayers, Jeffrey Anderson**
Attendance: **15828**

Start Time: **10:24 PM ET**
End Time: **12:21 AM ET**
Game Duration: **1:57**
Neutral Court;

Score	1st	2nd	TOT
DUK	29	35	64
KU	33	36	69

Points (This Period)	DUK	KU
In the Paint	24	30
Off Turns	4	11
2nd Chance	10	8
Fast Break	4	7
Bench	2	2
Per Poss	1.061 17/33	1.059 18/34

Official Play-By-Play
Duke vs Kansas
Second Half
November 15, 2022 at Gainbridge Fieldhouse - Indianapolis, IN

Period 2

Starters:

Duke: 3 ROACH, JEREMY (G); 5 PROCTOR, TYRESE (G); 15 YOUNG, RYAN (C); 25 MITCHELL, MARK (F); 30 FILIPOWSKI, KYLE (C);

Kansas: 3 HARRIS, DAJUAN (G); 4 DICK, GRADEY (G); 10 WILSON, JALEN (F); 15 MCCULLAR, KEVIN (G); 24 ADAMS, JR., KJ (F);

Time	VISITORS: Duke	Score	Margin	HOME: Kansas
00:00				REBOUND (OFF) by TEAM
20:00	SUB OUT: LIVELY II, DERECK			
20:00	SUB OUT: BLAKES, JAYLEN			
20:00	SUB OUT: GRANDISON, JACOB			
20:00	SUB IN: PROCTOR, TYRESE			
20:00	SUB IN: MITCHELL, MARK			
20:00	SUB IN: FILIPOWSKI, KYLE			
20:00				SUB OUT: PETTIFORD, BOBBY
20:00				SUB OUT: EJIOFOR, ZUBY
20:00				SUB IN: DICK, GRADEY
20:00				SUB IN: ADAMS, JR., KJ
19:35	GOOD! JUMPER by PROCTOR, TYRESE [PNT]	33-31	H 2	
19:16				MISSED JUMPER by WILSON, JALEN
19:13	REBOUND (DEF) by FILIPOWSKI, KYLE			
19:09				FOUL (PERSONAL) by MCCULLAR, KEVIN
19:06				FOUL (PERSONAL) by HARRIS, DAJUAN
18:53				FOUL (PERSONAL) by MCCULLAR, KEVIN
18:53	GOOD! FT by MITCHELL, MARK	33-32	H 1	
18:53	MISSED FT by MITCHELL, MARK			
18:51				REBOUND (DEF) by ADAMS, JR., KJ
18:33		35-32	H 3	GOOD! LAYUP by WILSON, JALEN
18:18	TURNOVER (LOSTBALL) by YOUNG, RYAN			
18:18				STEAL by ADAMS, JR., KJ
18:15		37-32	H 5	GOOD! LAYUP by HARRIS, DAJUAN [FB]
18:15				ASSIST by ADAMS, JR., KJ
17:59	GOOD! JUMPER by PROCTOR, TYRESE [PNT]	37-34	H 3	
17:36				MISSED JUMPER by MCCULLAR, KEVIN
17:32				REBOUND (OFF) by HARRIS, DAJUAN
17:26				MISSED 3PTR by HARRIS, DAJUAN
17:24	REBOUND (DEF) by TEAM			
17:24				SUB OUT: MCCULLAR, KEVIN
17:24				SUB IN: UDEH JR., ERNEST
17:06				FOUL (PERSONAL) by DICK, GRADEY
17:06	GOOD! FT by FILIPOWSKI, KYLE	37-35	H 2	
17:06	SUB OUT: YOUNG, RYAN			
17:06	SUB IN: LIVELY II, DERECK			
17:06	GOOD! FT by FILIPOWSKI, KYLE	37-36	H 1	
16:55				MISSED 3PTR by WILSON, JALEN
16:52	REBOUND (DEF) by FILIPOWSKI, KYLE			
16:32	MISSED LAYUP by ROACH, JEREMY			
16:29	REBOUND (OFF) by LIVELY II, DERECK			
16:29	GOOD! DUNK by LIVELY II, DERECK	37-38	V 1	
16:20		39-38	H 1	GOOD! JUMPER by ADAMS, JR., KJ [PNT]
16:20				ASSIST by HARRIS, DAJUAN
15:58	GOOD! 3PTR by PROCTOR, TYRESE	39-41	V 2	
15:58	ASSIST by LIVELY II, DERECK			
15:41		41-41	T	GOOD! LAYUP by WILSON, JALEN
15:25	GOOD! JUMPER by MITCHELL, MARK [PNT]	41-43	V 2	
15:25	ASSIST by PROCTOR, TYRESE			
15:10				MISSED JUMPER by WILSON, JALEN
15:07	REBOUND (DEF) by FILIPOWSKI, KYLE			
14:58	TIMEOUT 30SEC			
14:58				
14:54	GOOD! DUNK by FILIPOWSKI, KYLE [PNT]	41-45	V 4	
14:54	ASSIST by ROACH, JEREMY			
14:44				FOUL (OFF) by ADAMS, JR., KJ
14:44				TURNOVER (OFFENSIVE) by ADAMS, JR., KJ
14:44				
14:44				SUB OUT: ADAMS, JR., KJ
14:44				SUB IN: PETTIFORD, BOBBY
14:28	MISSED LAYUP by FILIPOWSKI, KYLE			
14:26	REBOUND (OFF) by MITCHELL, MARK			
14:26	MISSED LAYUP by MITCHELL, MARK			
14:26				BLOCK by UDEH JR., ERNEST
14:26	REBOUND (OFF) by TEAM			

Time	VISITORS: Duke	Score	Margin	HOME: Kansas
14:24	GOOD! JUMPER by FILIPOWSKI, KYLE [PNT]	41-47	V 6	
14:24	ASSIST by PROCTOR, TYRESE			
13:51				MISSED LAYUP by HARRIS, DAJUAN
13:48	REBOUND (DEF) by ROACH, JEREMY			
13:28	MISSED JUMPER by ROACH, JEREMY			
13:28				BLOCK by UDEH JR., ERNEST
13:24				REBOUND (DEF) by PETTIFORD, BOBBY
13:20		43-47	V 4	GOOD! LAYUP by WILSON, JALEN [FB]
13:20				ASSIST by PETTIFORD, BOBBY
13:01	MISSED 3PTR by ROACH, JEREMY			
12:54	REBOUND (OFF) by MITCHELL, MARK			
12:54	GOOD! DUNK by MITCHELL, MARK	43-49	V 6	
12:37				MISSED JUMPER by WILSON, JALEN
12:33				REBOUND (OFF) by HARRIS, DAJUAN
12:21		45-49	V 4	GOOD! JUMPER by PETTIFORD, BOBBY [PNT]
12:21				ASSIST by WILSON, JALEN
12:00	GOOD! DUNK by MITCHELL, MARK	45-51	V 6	
11:47		47-51	V 4	GOOD! LAYUP by HARRIS, DAJUAN
11:34	MISSED 3PTR by PROCTOR, TYRESE			
11:30				REBOUND (DEF) by WILSON, JALEN
11:18				MISSED LAYUP by WILSON, JALEN
11:18	BLOCK by FILIPOWSKI, KYLE			
11:14				REBOUND (OFF) by WILSON, JALEN
11:13				MISSED LAYUP by WILSON, JALEN
11:13	BLOCK by LIVELY II, DERECK			
11:10	REBOUND (DEF) by FILIPOWSKI, KYLE			
11:09				FOUL (PERSONAL) by DICK, GRADEY
11:09				
11:09	SUB OUT: LIVELY II, DERECK			
11:09	SUB OUT: FILIPOWSKI, KYLE			
11:09	SUB IN: BLAKES, JAYLEN			
11:09	SUB IN: YOUNG, RYAN			
11:09				SUB OUT: HARRIS, DAJUAN
11:09				SUB OUT: DICK, GRADEY
11:09				SUB OUT: UDEH JR., ERNEST
11:09				SUB IN: YESUFU, JOSEPH
11:09				SUB IN: MCCULLAR, KEVIN
11:09				SUB IN: EJIOFOR, ZUBY
10:49	MISSED JUMPER by PROCTOR, TYRESE			
10:45				REBOUND (DEF) by EJIOFOR, ZUBY
10:41				MISSED 3PTR by MCCULLAR, KEVIN
10:37				REBOUND (OFF) by WILSON, JALEN
10:35		49-51	V 2	GOOD! LAYUP by MCCULLAR, KEVIN
10:35				ASSIST by WILSON, JALEN
10:29	GOOD! LAYUP by YOUNG, RYAN [FB]	49-53	V 4	
10:29	ASSIST by BLAKES, JAYLEN			
10:09				MISSED JUMPER by YESUFU, JOSEPH
10:06	REBOUND (DEF) by BLAKES, JAYLEN			
09:56	TURNOVER (LOSTBALL) by YOUNG, RYAN			
09:56				STEAL by YESUFU, JOSEPH
09:52				MISSED LAYUP by YESUFU, JOSEPH
09:48				REBOUND (OFF) by WILSON, JALEN
09:48		51-53	V 2	GOOD! LAYUP by WILSON, JALEN
09:47	SUB OUT: PROCTOR, TYRESE			
09:47	SUB IN: FILIPOWSKI, KYLE			
09:47				SUB OUT: YESUFU, JOSEPH
09:47				SUB IN: HARRIS, DAJUAN
09:23	MISSED 3PTR by BLAKES, JAYLEN			
09:20				REBOUND (DEF) by HARRIS, DAJUAN
09:12		53-53	T	GOOD! LAYUP by WILSON, JALEN
09:12				ASSIST by HARRIS, DAJUAN
09:12	FOUL (PERSONAL) by YOUNG, RYAN			
09:12	SUB OUT: ROACH, JEREMY			
09:12	SUB IN: PROCTOR, TYRESE			
09:12		54-53	H 1	GOOD! FT by WILSON, JALEN
09:02				FOUL (PERSONAL) by HARRIS, DAJUAN
09:02	SUB OUT: YOUNG, RYAN			
09:02	SUB IN: LIVELY II, DERECK			
09:02	GOOD! FT by PROCTOR, TYRESE	54-54	T	
09:02	GOOD! FT by PROCTOR, TYRESE	54-55	V 1	
08:49				TURNOVER (BADPASS) by WILSON, JALEN
08:49	SUB OUT: BLAKES, JAYLEN			
08:49	SUB IN: ROACH, JEREMY			
08:38	MISSED JUMPER by PROCTOR, TYRESE			
08:38				BLOCK by PETTIFORD, BOBBY
08:34	REBOUND (OFF) by PROCTOR, TYRESE			

Time	VISITORS: Duke	Score	Margin	HOME: Kansas
08:27	MISSED LAYUP by FILIPOWSKI, KYLE			
08:25	REBOUND (OFF) by FILIPOWSKI, KYLE			
08:25	FOUL (OFF) by FILIPOWSKI, KYLE			
08:25	TURNOVER (OFFENSIVE) by FILIPOWSKI, KYLE			
08:05				TURNOVER (TRAVEL) by EJIOFOR, ZUBY
07:52	MISSED LAYUP by ROACH, JEREMY			
07:52				BLOCK by EJIOFOR, ZUBY
07:51	REBOUND (OFF) by TEAM			
07:51				
07:51				SUB OUT: EJIOFOR, ZUBY
07:51				SUB IN: ADAMS, JR.,KJ
07:42	MISSED 3PTR by FILIPOWSKI, KYLE			
07:38				REBOUND (DEF) by WILSON, JALEN
07:16				MISSED JUMPER by MCCULLAR, KEVIN
07:13	REBOUND (DEF) by PROCTOR, TYRESE			
06:47	MISSED JUMPER by MITCHELL, MARK			
06:47				BLOCK by WILSON, JALEN
06:43				REBOUND (DEF) by PETTIFORD, BOBBY
06:43				FOUL (OFF) by ADAMS, JR.,KJ
06:43				TURNOVER (OFFENSIVE) by ADAMS, JR.,KJ
06:43	SUB OUT: LIVELY II, DERECK			
06:43	SUB IN: YOUNG, RYAN			
06:32	MISSED JUMPER by MITCHELL, MARK			
06:29				REBOUND (DEF) by HARRIS, DAJUAN
06:12				MISSED JUMPER by HARRIS, DAJUAN
06:09	REBOUND (DEF) by FILIPOWSKI, KYLE			
05:59	MISSED JUMPER by FILIPOWSKI, KYLE			
05:55	REBOUND (OFF) by FILIPOWSKI, KYLE			
05:55	GOOD! LAYUP by FILIPOWSKI, KYLE	54-57	V 3	
05:41				MISSED 3PTR by WILSON, JALEN
05:37	REBOUND (DEF) by ROACH, JEREMY			
05:19	TURNOVER (TRAVEL) by YOUNG, RYAN			
05:19				SUB OUT: PETTIFORD, BOBBY
05:19				SUB OUT: ADAMS, JR.,KJ
05:19				SUB IN: DICK, GRADEY
05:19				SUB IN: EJIOFOR, ZUBY
05:07				TURNOVER (TRAVEL) by WILSON, JALEN
04:53	MISSED LAYUP by ROACH, JEREMY			
04:53				BLOCK by EJIOFOR, ZUBY
04:49	REBOUND (OFF) by ROACH, JEREMY			
04:41	MISSED LAYUP by YOUNG, RYAN			
04:37	REBOUND (OFF) by FILIPOWSKI, KYLE			
04:37	GOOD! LAYUP by FILIPOWSKI, KYLE	54-59	V 5	
04:27				TIMEOUT 30SEC
04:27				
04:08		56-59	V 3	GOOD! JUMPER by WILSON, JALEN [PNT]
03:44	MISSED 3PTR by FILIPOWSKI, KYLE			
03:40				REBOUND (DEF) by MCCULLAR, KEVIN
03:34				MISSED LAYUP by WILSON, JALEN
03:32				REBOUND (OFF) by EJIOFOR, ZUBY
03:27				MISSED 3PTR by WILSON, JALEN
03:23	REBOUND (DEF) by MITCHELL, MARK			
03:02	MISSED 3PTR by ROACH, JEREMY			
02:59	REBOUND (OFF) by YOUNG, RYAN			
02:54	TURNOVER (BADPASS) by FILIPOWSKI, KYLE			
02:54	SUB OUT: YOUNG, RYAN			
02:54	SUB IN: LIVELY II, DERECK			
02:45				MISSED JUMPER by WILSON, JALEN
02:41				REBOUND (OFF) by MCCULLAR, KEVIN
02:41		58-59	V 1	GOOD! LAYUP by MCCULLAR, KEVIN
02:37	TIMEOUT 30SEC			
02:37				SUB OUT: EJIOFOR, ZUBY
02:37				SUB IN: ADAMS, JR.,KJ
02:28	TURNOVER (LOSTBALL) by MITCHELL, MARK			
02:28				STEAL by WILSON, JALEN
02:22		61-59	H 2	GOOD! 3PTR by DICK, GRADEY [FB]
02:22				ASSIST by MCCULLAR, KEVIN
02:02	GOOD! 3PTR by ROACH, JEREMY	61-62	V 1	
02:02	ASSIST by PROCTOR, TYRESE			
01:39		63-62	H 1	GOOD! DUNK by DICK, GRADEY
01:39				ASSIST by HARRIS, DAJUAN
01:23	FOUL (OFF) by ROACH, JEREMY			
01:23	TURNOVER (OFFENSIVE) by ROACH, JEREMY			
01:23	SUB OUT: PROCTOR, TYRESE			
01:23	SUB IN: BLAKES, JAYLEN			
01:04		65-62	H 3	GOOD! LAYUP by DICK, GRADEY

Time	VISITORS: Duke	Score	Margin	HOME: Kansas
01:04				ASSIST by ADAMS, JR.,KJ
00:48				FOUL (PERSONAL) by HARRIS, DAJUAN
00:48	SUB OUT: BLAKES, JAYLEN			
00:48	SUB IN: PROCTOR, TYRESE			
00:48	MISSED FT by ROACH, JEREMY			
00:46				REBOUND (DEF) by DICK, GRADEY
00:22		67-62	H 5	GOOD! LAYUP by ADAMS, JR.,KJ
00:22				ASSIST by HARRIS, DAJUAN
00:22	FOUL (PERSONAL) by LIVELY II, DERECK			
00:21				MISSED FT by ADAMS, JR.,KJ
00:20	REBOUND (DEF) by LIVELY II, DERECK			
00:15	GOOD! LAYUP by ROACH, JEREMY [FB/PNT]	67-64	H 3	
00:11	FOUL (PERSONAL) by ROACH, JEREMY			
00:11	SUB OUT: LIVELY II, DERECK			
00:11	SUB IN: BLAKES, JAYLEN			
00:11				SUB OUT: ADAMS, JR.,KJ
00:11				SUB IN: PETTIFORD, BOBBY
00:10	FOUL (PERSONAL) by BLAKES, JAYLEN			
00:09	FOUL (PERSONAL) by MITCHELL, MARK			
00:09				SUB OUT: DICK, GRADEY
00:09				SUB IN: ADAMS, JR.,KJ
00:09		68-64	H 4	GOOD! FT by WILSON, JALEN
00:09		69-64	H 5	GOOD! FT by WILSON, JALEN
00:09				TIMEOUT 30SEC
00:05	MISSED 3PTR by PROCTOR, TYRESE			
00:01	REBOUND (OFF) by FILIPOWSKI, KYLE			
00:00	MISSED 3PTR by FILIPOWSKI, KYLE			
00:00	REBOUND (OFF) by TEAM			

Duke 64, Kansas 69

Points (This Period)	DUK	KU
In the Paint	24	30
Off Turns	4	11
2nd Chance	10	8
Fast Break	4	7
Bench	2	2
Per Poss	1.061 17/33	1.059 18/34

Official Scoring/Possession Reference Chart
Duke vs Kansas
Period 1
November 15, 2022 at Gainbridge Fieldhouse - Indianapolis, IN

Period 1

Starters:

Duke: 3 ROACH, JEREMY (G); 5 PROCTOR, TYRESE (G); 15 YOUNG, RYAN (C); 25 MITCHELL, MARK (F); 30 FILIPOWSKI, KYLE (C);
Kansas: 3 HARRIS, DAJUAN (G); 4 DICK, GRADEY (G); 10 WILSON, JALEN (F); 15 MCCULLAR, KEVIN (G); 24 ADAMS, JR., KJ (F);

Time	VISITORS: Duke	Score	Margin	HOME: Kansas
19:09	GOOD! LAYUP by ROACH, JEREMY	0-2	V 2	
18:40	GOOD! LAYUP by FILIPOWSKI, KYLE [FB]	0-4	V 4	
18:20		3-4	V 1	GOOD! 3PTR by MCCULLAR, KEVIN
17:17		5-4	H 1	GOOD! LAYUP by ADAMS, JR., KJ
16:56	GOOD! LAYUP by YOUNG, RYAN	5-6	V 1	
16:43		7-6	H 1	GOOD! LAYUP by WILSON, JALEN
16:05		9-6	H 3	GOOD! JUMPER by WILSON, JALEN
15:35		12-6	H 6	GOOD! 3PTR by MCCULLAR, KEVIN
14:23		14-6	H 8	GOOD! LAYUP by DICK, GRADEY [FB]
14:23		15-6	H 9	GOOD! FT by DICK, GRADEY [FB]
13:20		17-6	H 11	GOOD! LAYUP by WILSON, JALEN
12:41	GOOD! LAYUP by ROACH, JEREMY	17-8	H 9	
11:03		19-8	H 11	GOOD! LAYUP by DICK, GRADEY
10:38	GOOD! FT by BLAKES, JAYLEN	19-9	H 10	
10:38	GOOD! FT by BLAKES, JAYLEN	19-10	H 9	
10:12	GOOD! FT by BLAKES, JAYLEN	19-11	H 8	
08:40	GOOD! LAYUP by YOUNG, RYAN	19-13	H 6	
08:22		21-13	H 8	GOOD! LAYUP by ADAMS, JR., KJ
08:14	GOOD! JUMPER by ROACH, JEREMY [PNT]	21-15	H 6	
07:53		23-15	H 8	GOOD! JUMPER by MCCULLAR, KEVIN
07:05	GOOD! FT by FILIPOWSKI, KYLE	23-16	H 7	
07:05	GOOD! FT by FILIPOWSKI, KYLE	23-17	H 6	
06:34		25-17	H 8	GOOD! LAYUP by WILSON, JALEN [FB]
06:17	GOOD! 3PTR by FILIPOWSKI, KYLE	25-20	H 5	
06:04		27-20	H 7	GOOD! JUMPER by DICK, GRADEY
04:11	GOOD! DUNK by LIVELY II, DERECK	27-22	H 5	
03:39	GOOD! LAYUP by ROACH, JEREMY	27-24	H 3	
03:39	GOOD! FT by ROACH, JEREMY	27-25	H 2	
02:50		29-25	H 4	GOOD! LAYUP by HARRIS, DAJUAN
02:31		31-25	H 6	GOOD! JUMPER by WILSON, JALEN
02:06	GOOD! LAYUP by BLAKES, JAYLEN	31-27	H 4	
01:48		33-27	H 6	GOOD! DUNK by EJIOFOR, ZUBY
00:18	GOOD! FT by ROACH, JEREMY	33-28	H 5	
00:18	GOOD! FT by ROACH, JEREMY	33-29	H 4	

Duke 29, Kansas 33

Official Scoring/Possession Reference Chart
Duke vs Kansas
Period 2
November 15, 2022 at Gainbridge Fieldhouse - Indianapolis, IN

Period 2

Starters:

Duke: 3 ROACH, JEREMY (G); 5 PROCTOR, TYRESE (G); 15 YOUNG, RYAN (C); 25 MITCHELL, MARK (F); 30 FILIPOWSKI, KYLE (C);

Kansas: 3 HARRIS, DAJUAN (G); 4 DICK, GRADEY (G); 10 WILSON, JALEN (F); 15 MCCULLAR, KEVIN (G); 24 ADAMS, JR., KJ (F);

Time	VISITORS: Duke	Score	Margin	HOME: Kansas
19:35	GOOD! JUMPER by PROCTOR, TYRESE [PNT]	33-31	H 2	
18:53	GOOD! FT by MITCHELL, MARK	33-32	H 1	
18:33		35-32	H 3	GOOD! LAYUP by WILSON, JALEN
18:15		37-32	H 5	GOOD! LAYUP by HARRIS, DAJUAN [FB]
17:59	GOOD! JUMPER by PROCTOR, TYRESE [PNT]	37-34	H 3	
17:06	GOOD! FT by FILIPOWSKI, KYLE	37-35	H 2	
17:06	GOOD! FT by FILIPOWSKI, KYLE	37-36	H 1	
16:29	GOOD! DUNK by LIVELY II, DERECK	37-38	V 1	
16:20		39-38	H 1	GOOD! JUMPER by ADAMS, JR., KJ [PNT]
15:58	GOOD! 3PTR by PROCTOR, TYRESE	39-41	V 2	
15:41		41-41	T	GOOD! LAYUP by WILSON, JALEN
15:25	GOOD! JUMPER by MITCHELL, MARK [PNT]	41-43	V 2	
14:54	GOOD! DUNK by FILIPOWSKI, KYLE [PNT]	41-45	V 4	
14:24	GOOD! JUMPER by FILIPOWSKI, KYLE [PNT]	41-47	V 6	
13:20		43-47	V 4	GOOD! LAYUP by WILSON, JALEN [FB]
12:54	GOOD! DUNK by MITCHELL, MARK	43-49	V 6	
12:21		45-49	V 4	GOOD! JUMPER by PETTIFORD, BOBBY [PNT]
12:00	GOOD! DUNK by MITCHELL, MARK	45-51	V 6	
11:47		47-51	V 4	GOOD! LAYUP by HARRIS, DAJUAN
10:35		49-51	V 2	GOOD! LAYUP by MCCULLAR, KEVIN
10:29	GOOD! LAYUP by YOUNG, RYAN [FB]	49-53	V 4	
09:48		51-53	V 2	GOOD! LAYUP by WILSON, JALEN
09:12		53-53	T	GOOD! LAYUP by WILSON, JALEN
09:12		54-53	H 1	GOOD! FT by WILSON, JALEN
09:02	GOOD! FT by PROCTOR, TYRESE	54-54	T	
09:02	GOOD! FT by PROCTOR, TYRESE	54-55	V 1	
05:55	GOOD! LAYUP by FILIPOWSKI, KYLE	54-57	V 3	
04:37	GOOD! LAYUP by FILIPOWSKI, KYLE	54-59	V 5	
04:08		56-59	V 3	GOOD! JUMPER by WILSON, JALEN [PNT]
02:41		58-59	V 1	GOOD! LAYUP by MCCULLAR, KEVIN
02:22		61-59	H 2	GOOD! 3PTR by DICK, GRADEY [FB]
02:02	GOOD! 3PTR by ROACH, JEREMY	61-62	V 1	
01:39		63-62	H 1	GOOD! DUNK by DICK, GRADEY
01:04		65-62	H 3	GOOD! LAYUP by DICK, GRADEY
00:22		67-62	H 5	GOOD! LAYUP by ADAMS, JR., KJ
00:15	GOOD! LAYUP by ROACH, JEREMY [FB/PNT]	67-64	H 3	
00:09		68-64	H 4	GOOD! FT by WILSON, JALEN
00:09		69-64	H 5	GOOD! FT by WILSON, JALEN

Duke 64, Kansas 69

Official Substitutions Log
Duke vs Kansas
Period 1
November 15, 2022 at Gainbridge Fieldhouse - Indianapolis, IN

VISITORS: Duke	Time	Score	HOME: Kansas
3 ROACH,JEREMY			3 HARRIS,DAJUAN
5 PROCTOR,TYRESE			4 DICK,GRADEY
15 YOUNG,RYAN			10 WILSON,JALEN
25 MITCHELL,MARK			15 MCCULLAR,KEVIN
30 FILIPOWSKI,KYLE			24 ADAMS, JR.,KJ
SUB OUT: 5 PROCTOR,TYRESE	15:17	6-12	
SUB OUT: 15 YOUNG,RYAN	15:17		
SUB OUT: 30 FILIPOWSKI,KYLE	15:17		
SUB IN: 1 LIVELY II,DERECK	15:17		
SUB IN: 2 BLAKES,JAYLEN	15:17		
SUB IN: 13 GRANDISON,JACOB	15:17		
	14:03	6-15	SUB OUT: HARRIS,DAJUAN
	14:03		SUB IN: PETTIFORD,BOBBY
SUB OUT: 25 MITCHELL,MARK	13:44	6-15	
SUB IN: 30 FILIPOWSKI,KYLE	13:44		
	13:44		SUB OUT: ADAMS, JR.,KJ
	13:44		SUB IN: UDEH JR.,ERNEST
	12:52	6-17	SUB OUT: DICK,GRADEY
	12:52		SUB IN: YESUFU,JOSEPH
SUB OUT: 30 FILIPOWSKI,KYLE	12:08	8-17	
SUB IN: 5 PROCTOR,TYRESE	12:08		
	11:40	8-17	SUB OUT: MCCULLAR,KEVIN
	11:40		SUB IN: DICK,GRADEY
SUB OUT: 1 LIVELY II,DERECK	10:38	9-19	
SUB OUT: 13 GRANDISON,JACOB	10:38		
SUB IN: 15 YOUNG,RYAN	10:38		
SUB IN: 25 MITCHELL,MARK	10:38		
	10:38		SUB OUT: WILSON,JALEN
	10:38		SUB IN: MCCULLAR,KEVIN
	10:12	11-19	SUB OUT: PETTIFORD,BOBBY
	10:12		SUB IN: HARRIS,DAJUAN
	09:38	11-19	SUB OUT: UDEH JR.,ERNEST
	09:38		SUB IN: ADAMS, JR.,KJ
SUB OUT: 25 MITCHELL,MARK	09:04	11-19	
SUB IN: 30 FILIPOWSKI,KYLE	09:04		
	09:04		SUB OUT: YESUFU,JOSEPH
	09:04		SUB IN: WILSON,JALEN
SUB OUT: 5 PROCTOR,TYRESE	07:32	15-23	
SUB IN: 25 MITCHELL,MARK	07:32		
	06:26	17-25	SUB OUT: ADAMS, JR.,KJ
	06:26		SUB IN: UDEH JR.,ERNEST
SUB OUT: 15 YOUNG,RYAN	05:32	20-27	
SUB OUT: 25 MITCHELL,MARK	05:32		
SUB IN: 1 LIVELY II,DERECK	05:32		
SUB IN: 13 GRANDISON,JACOB	05:32		
	03:39	24-27	SUB OUT: MCCULLAR,KEVIN
	03:39		SUB OUT: UDEH JR.,ERNEST
	03:39		SUB IN: PETTIFORD,BOBBY
	03:39		SUB IN: EJIOFOR,ZUBY
SUB OUT: 1 LIVELY II,DERECK	00:58	27-33	
SUB OUT: 30 FILIPOWSKI,KYLE	00:58		
SUB IN: 15 YOUNG,RYAN	00:58		
SUB IN: 25 MITCHELL,MARK	00:58		
	00:23	27-33	SUB OUT: DICK,GRADEY
	00:23		SUB IN: MCCULLAR,KEVIN
SUB OUT: 25 MITCHELL,MARK	00:18	28-33	
SUB IN: 1 LIVELY II,DERECK	00:18		

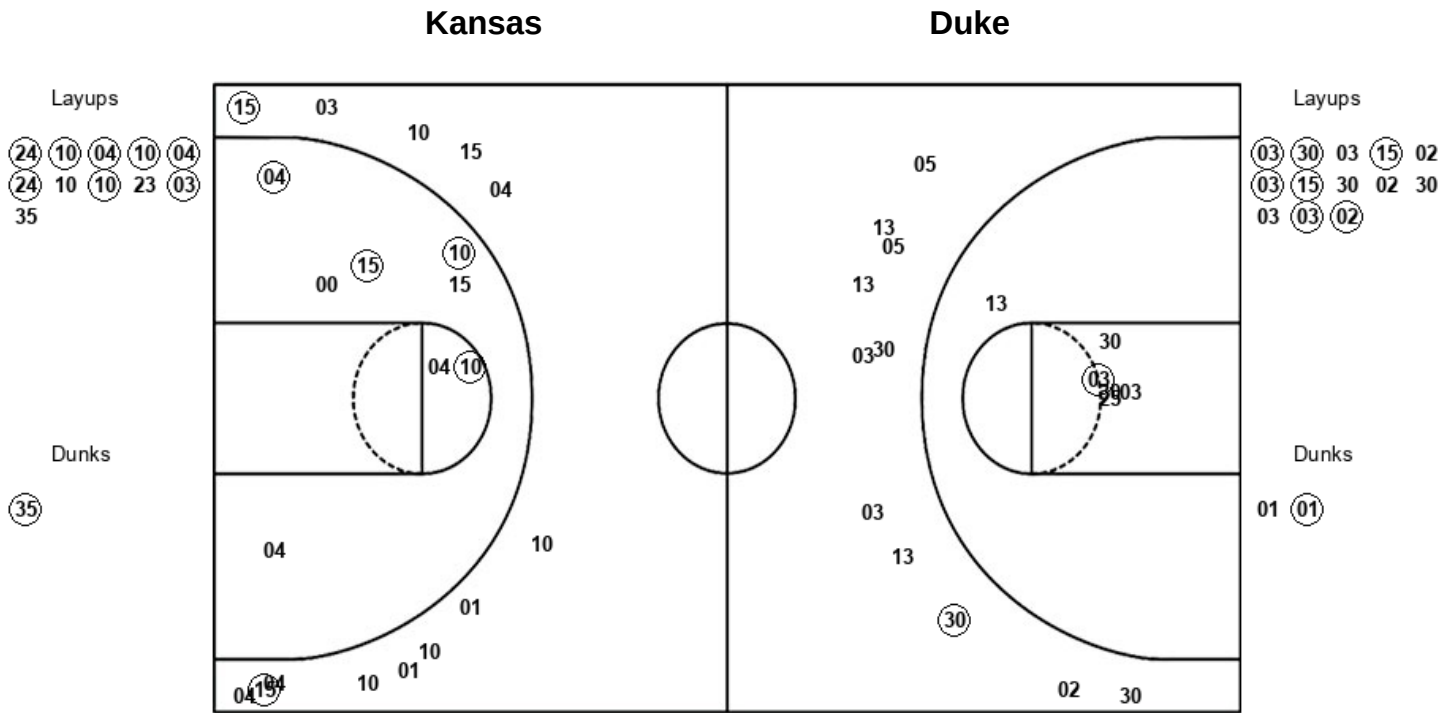
Duke 29, Kansas 33

Official Substitutions Log
Duke vs Kansas
Period 2
November 15, 2022 at Gainbridge Fieldhouse - Indianapolis, IN

VISITORS: Duke	Time	Score	HOME: Kansas
3 ROACH,JEREMY			3 HARRIS,DAJUAN
5 PROCTOR,TYRESE			4 DICK,GRADEY
15 YOUNG,RYAN			10 WILSON,JALEN
25 MITCHELL,MARK			15 MCCULLAR,KEVIN
30 FILIPOWSKI,KYLE			24 ADAMS, JR.,KJ
SUB OUT: 1 LIVELY II,DERECK	20:00	-	
SUB OUT: 2 BLAKES,JAYLEN	20:00		
SUB OUT: 13 GRANDISON,JACOB	20:00		
SUB IN: 5 PROCTOR,TYRESE	20:00		
SUB IN: 25 MITCHELL,MARK	20:00		
SUB IN: 30 FILIPOWSKI,KYLE	20:00		
	20:00		SUB OUT: PETTIFORD,BOBBY
	20:00		SUB OUT: EJIOFOR,ZUBY
	20:00		SUB IN: DICK,GRADEY
	20:00		SUB IN: ADAMS, JR.,KJ
	17:24	34-37	SUB OUT: MCCULLAR,KEVIN
	17:24		SUB IN: UDEH JR.,ERNEST
SUB OUT: 15 YOUNG,RYAN	17:06	35-37	
SUB IN: 1 LIVELY II,DERECK	17:06		
	14:44	45-41	SUB OUT: ADAMS, JR.,KJ
	14:44		SUB IN: PETTIFORD,BOBBY
SUB OUT: 1 LIVELY II,DERECK	11:09	51-47	
SUB OUT: 30 FILIPOWSKI,KYLE	11:09		
SUB IN: 2 BLAKES,JAYLEN	11:09		
SUB IN: 15 YOUNG,RYAN	11:09		
	11:09		SUB OUT: HARRIS,DAJUAN
	11:09		SUB OUT: DICK,GRADEY
	11:09		SUB OUT: UDEH JR.,ERNEST
	11:09		SUB IN: YESUFU,JOSEPH
	11:09		SUB IN: MCCULLAR,KEVIN
	11:09		SUB IN: EJIOFOR,ZUBY
SUB OUT: 5 PROCTOR,TYRESE	09:47	53-51	
SUB IN: 30 FILIPOWSKI,KYLE	09:47		
	09:47		SUB OUT: YESUFU,JOSEPH
	09:47		SUB IN: HARRIS,DAJUAN
SUB OUT: 3 ROACH,JEREMY	09:12	53-53	
SUB IN: 5 PROCTOR,TYRESE	09:12		
SUB OUT: 15 YOUNG,RYAN	09:02	53-54	
SUB IN: 1 LIVELY II,DERECK	09:02		
SUB OUT: 2 BLAKES,JAYLEN	08:49	55-54	
SUB IN: 3 ROACH,JEREMY	08:49		
	07:51	55-54	SUB OUT: EJIOFOR,ZUBY
	07:51		SUB IN: ADAMS, JR.,KJ
SUB OUT: 1 LIVELY II,DERECK	06:43	55-54	
SUB IN: 15 YOUNG,RYAN	06:43		
	05:19	57-54	SUB OUT: PETTIFORD,BOBBY
	05:19		SUB OUT: ADAMS, JR.,KJ
	05:19		SUB IN: DICK,GRADEY
	05:19		SUB IN: EJIOFOR,ZUBY
SUB OUT: 15 YOUNG,RYAN	02:54	59-56	
SUB IN: 1 LIVELY II,DERECK	02:54		
	02:37	59-58	SUB OUT: EJIOFOR,ZUBY
	02:37		SUB IN: ADAMS, JR.,KJ
SUB OUT: 5 PROCTOR,TYRESE	01:23	62-63	
SUB IN: 2 BLAKES,JAYLEN	01:23		
SUB OUT: 2 BLAKES,JAYLEN	00:48	62-65	
SUB IN: 5 PROCTOR,TYRESE	00:48		
SUB OUT: 1 LIVELY II,DERECK	00:11	64-67	
SUB IN: 2 BLAKES,JAYLEN	00:11		
	00:11		SUB OUT: ADAMS, JR.,KJ
	00:11		SUB IN: PETTIFORD,BOBBY
	00:09	64-67	SUB OUT: DICK,GRADEY
	00:09		SUB IN: ADAMS, JR.,KJ

Duke 64, Kansas 69

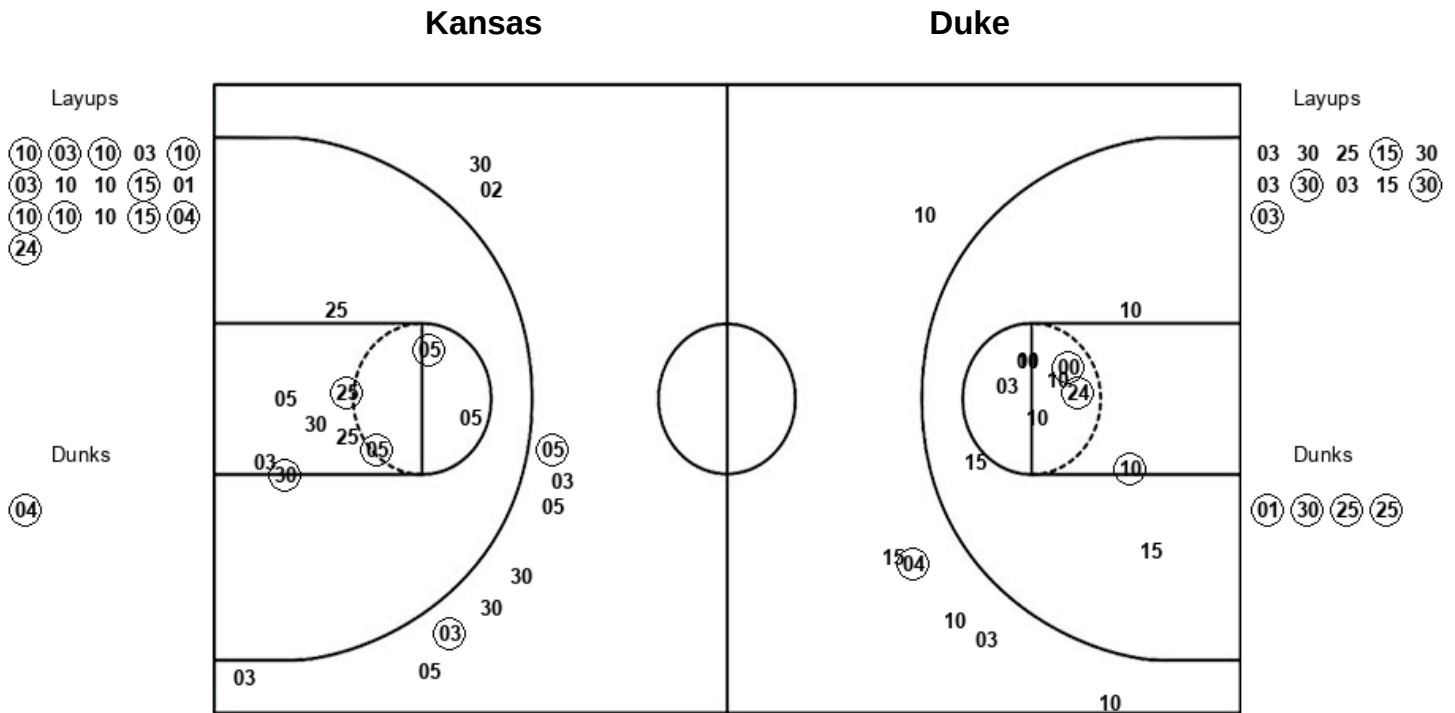
Official Shot Chart
Duke vs Kansas
PERIOD 1 Shots
November 15, 2022 at Gainbridge Fieldhouse - Indianapolis, IN



KU : Period 1	Made	Att	Pct
Layups	8	11	72.7
Dunks	1	1	100.0
2PT Field Goals	13	20	65.0
3PT Field Goals	2	13	15.4
Total Field Goals	15	33	45.5

DUK : Period 1	Made	Att	Pct
Layups	7	13	53.8
Dunks	1	2	50.0
2PT Field Goals	9	21	42.9
3PT Field Goals	1	11	09.1
Total Field Goals	10	32	31.3

Official Shot Chart
Duke vs Kansas
PERIOD 2 Shots
 November 15, 2022 at Gainbridge Fieldhouse - Indianapolis, IN



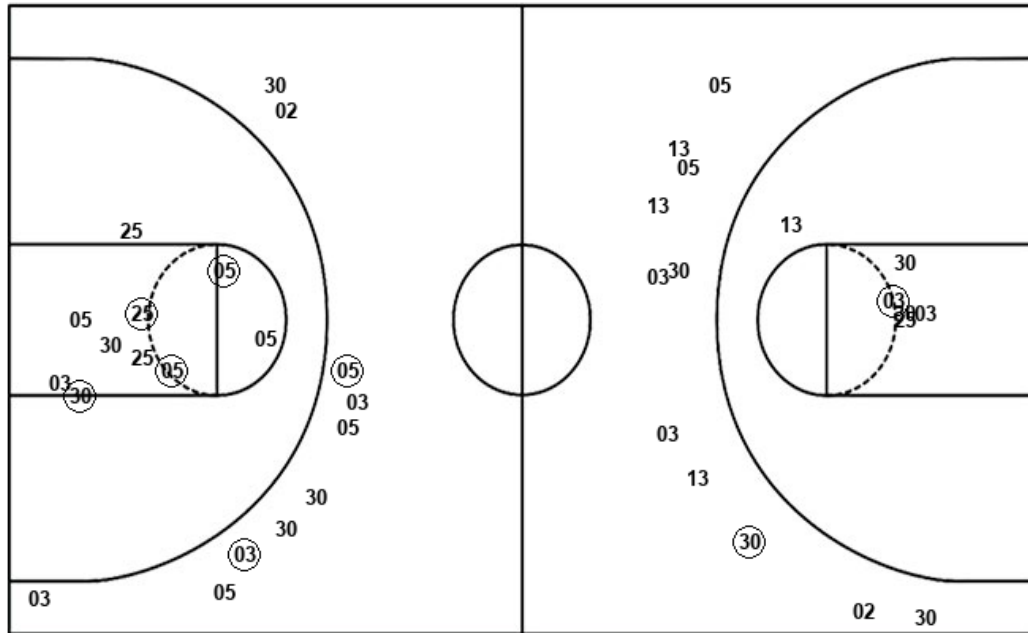
KU : Period 2	Made	Att	Pct
Layups	11	16	68.8
Dunks	1	1	100.0
2PT Field Goals	15	28	53.6
3PT Field Goals	1	6	16.7
Total Field Goals	16	34	47.1

DUK : Period 2	Made	Att	Pct
Layups	4	11	36.4
Dunks	4	4	100.0
2PT Field Goals	12	25	48.0
3PT Field Goals	2	10	20.0
Total Field Goals	14	35	40.0

Official Shot Chart
Duke vs Kansas
Duke Team Shots
November 15, 2022 at Gainbridge Fieldhouse - Indianapolis, IN

Layups

Dunks



Layups

Dunks

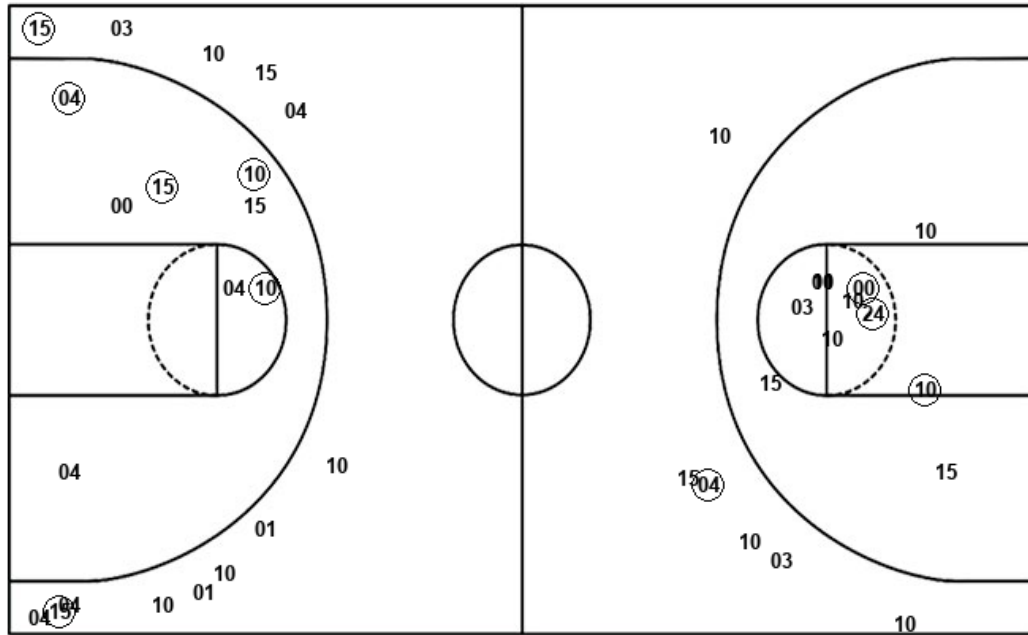
DUK : Period 1	Made	Att	Pct
Layups	7	13	53.8
Dunks	1	2	50.0
2PT Field Goals	9	21	42.9
3PT Field Goals	1	11	09.1
Total Field Goals	10	32	31.3

DUK : Period 2	Made	Att	Pct
Layups	4	11	36.4
Dunks	4	4	100.0
2PT Field Goals	12	25	48.0
3PT Field Goals	2	10	20.0
Total Field Goals	14	35	40.0

Official Shot Chart
Duke vs Kansas
Kansas Team Shots
November 15, 2022 at Gainbridge Fieldhouse - Indianapolis, IN

Layups

Dunks



Layups

Dunks

KU : Period 1	Made	Att	Pct
Layups	8	11	72.7
Dunks	1	1	100.0
2PT Field Goals	13	20	65.0
3PT Field Goals	2	13	15.4
Total Field Goals	15	33	45.5

KU : Period 2	Made	Att	Pct
Layups	11	16	68.8
Dunks	1	1	100.0
2PT Field Goals	15	28	53.6
3PT Field Goals	1	6	16.7
Total Field Goals	16	34	47.1